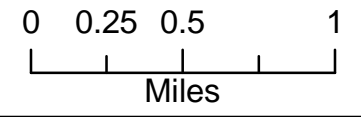


107°8'0"W 107°7'0"W 107°6'0"W 107°5'0"W 107°4'0"W 107°3'0"W 107°2'0"W 107°1'0"W 107°0'0"W 106°59'0"W 106°58'0"W

Air Ops
Lake Christine
 CO-EAX-000215
 07/05/2018 1600


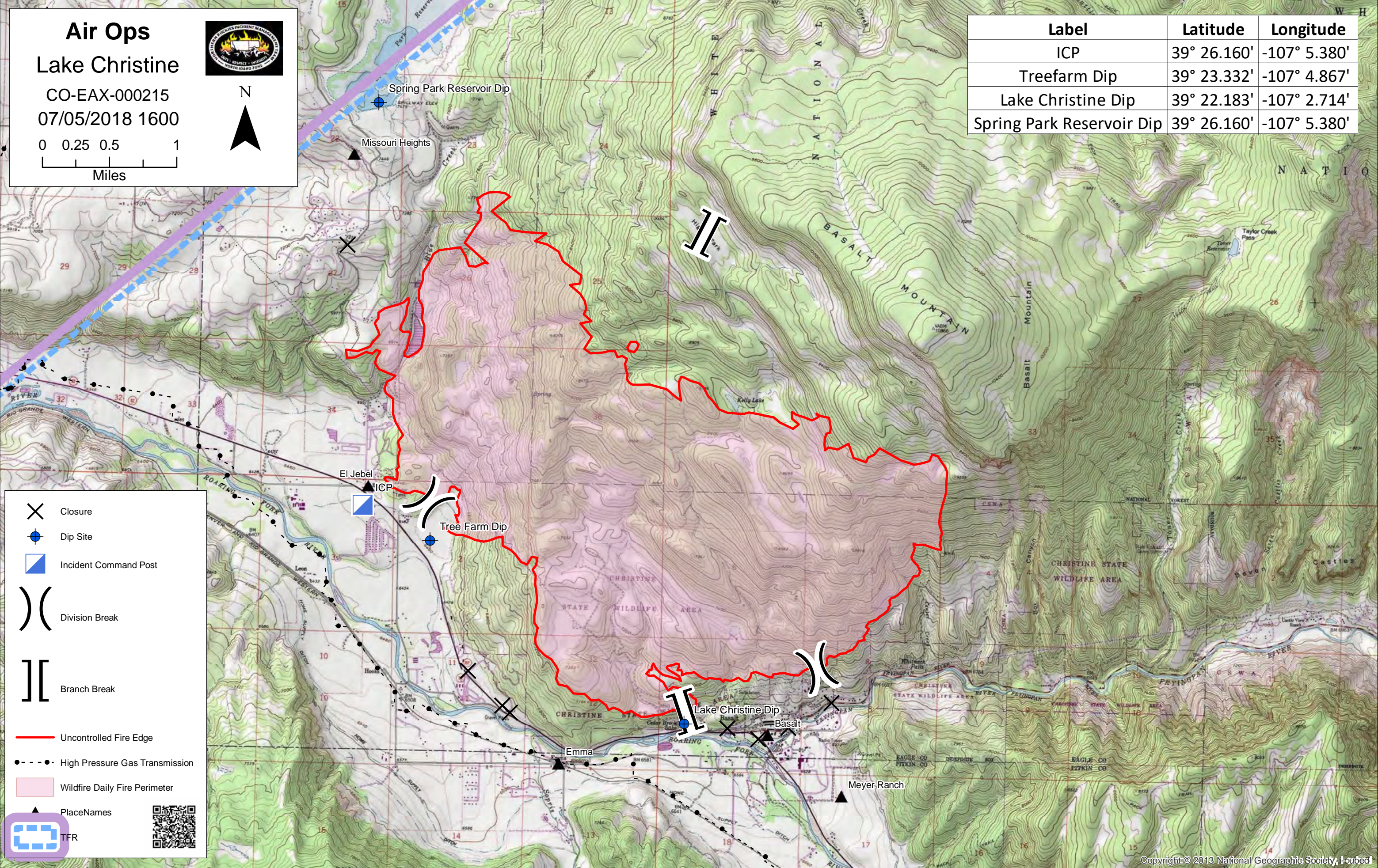


Label	Latitude	Longitude
ICP	39° 26.160'	-107° 5.380'
Treefarm Dip	39° 23.332'	-107° 4.867'
Lake Christine Dip	39° 22.183'	-107° 2.714'
Spring Park Reservoir Dip	39° 26.160'	-107° 5.380'

39°26'0"N
39°25'0"N
39°24'0"N
39°23'0"N
39°22'0"N

39°26'0"N
39°25'0"N
39°24'0"N
39°23'0"N
39°22'0"N

- Closure
- Dip Site
- Incident Command Post
- Division Break
- Branch Break
- Uncontrolled Fire Edge
- High Pressure Gas Transmission
- Wildfire Daily Fire Perimeter
- PlaceNames
- TFR

107°8'0"W 107°7'0"W 107°6'0"W 107°5'0"W 107°4'0"W 107°3'0"W 107°2'0"W 107°1'0"W 107°0'0"W 106°59'0"W 106°58'0"W 106°57'0"W