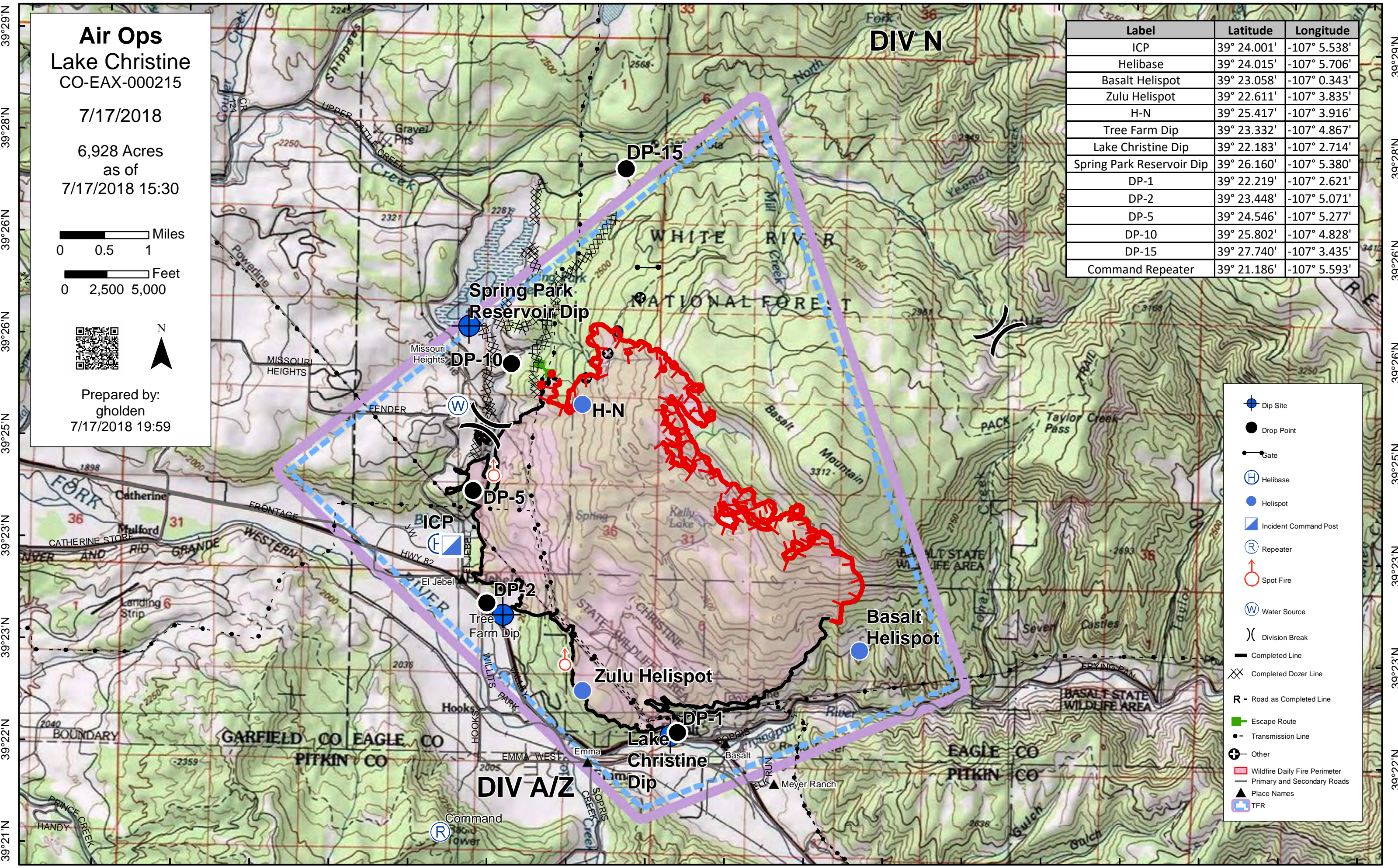


107°11'W 107°10'W 107°8'W 107°8'W 107°7'W 107°6'W 107°5'W 107°4'W 107°3'W 107°2'W 107°1'W 107°0'W 106°59'W 106°58'W 106°56'W 106°56'W 106°55'W 106°53'W



Air Ops
Lake Christine
CO-EAX-000215

7/17/2018

6,928 Acres
 as of
 7/17/2018 15:30

0 0.5 1 Miles
 0 2,500 5,000 Feet

Prepared by:
 gholden
 7/17/2018 19:59

Label	Latitude	Longitude
ICP	39° 24.001'	-107° 5.538'
Helibase	39° 24.015'	-107° 5.706'
Basalt Helispot	39° 23.058'	-107° 0.343'
Zulu Helispot	39° 22.611'	-107° 3.835'
H-N	39° 25.417'	-107° 3.916'
Tree Farm Dip	39° 23.332'	-107° 4.867'
Lake Christine Dip	39° 22.183'	-107° 2.714'
Spring Park Reservoir Dip	39° 26.160'	-107° 5.380'
DP-1	39° 22.219'	-107° 2.621'
DP-2	39° 23.448'	-107° 5.071'
DP-5	39° 24.546'	-107° 5.277'
DP-10	39° 25.802'	-107° 4.828'
DP-15	39° 27.740'	-107° 3.435'
Command Repeater	39° 21.186'	-107° 5.593'

- Dip Site
- Drop Point
- Gate
- Helibase
- Helispot
- Incident Command Post
- Repeater
- Spot Fire
- Water Source
- Division Break
- Completed Line
- Completed Dozer Line
- R - Road as Completed Line
- Escape Route
- Transmission Line
- Other
- Wildfire Daily Fire Perimeter
- Primary and Secondary Roads
- Place Names
- TFR

107°10'W 107°8'W 107°8'W 107°7'W 107°6'W 107°5'W 107°4'W 107°3'W 107°2'W 107°1'W 107°0'W 106°59'W 106°58'W 106°56'W 106°56'W 106°55'W 106°53'W