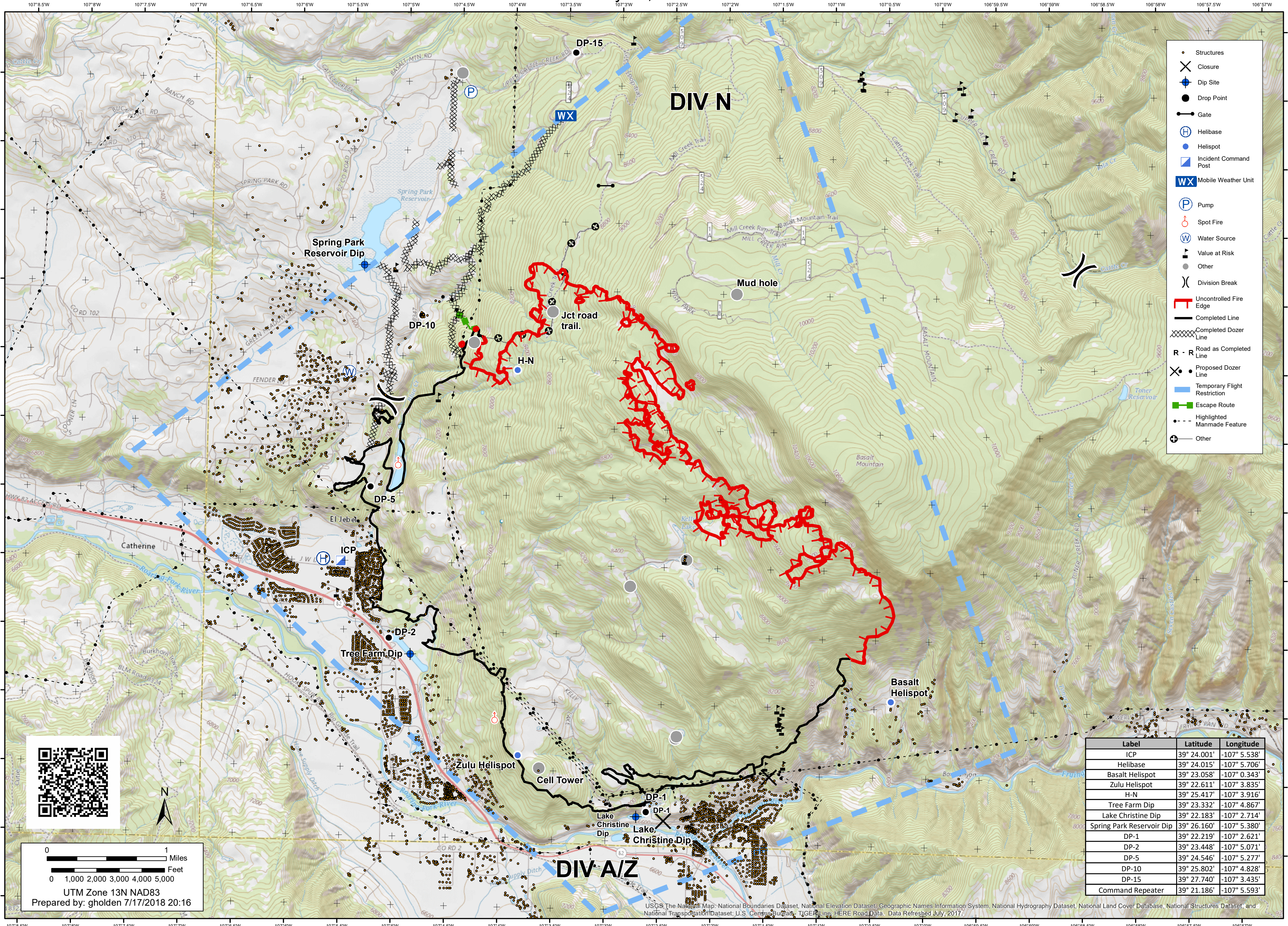


6,928 acres
as of 7/17/2018 15:30

OPS
July 17, 2018

Lake Christine Fire
CO-EAX-00215



- Structures
- ✕ Closure
- ⊕ Dip Site
- Drop Point
- Gate
- ⊕ Helibase
- ⊕ Helispot
- ⊕ Incident Command Post
- WX Mobile Weather Unit
- ⊕ Pump
- ⊕ Spot Fire
- ⊕ Water Source
- ⊕ Value at Risk
- Other
-) Division Break
- Uncontrolled Fire Edge
- Completed Line
- Completed Dozer Line
- R - R Road as Completed Line
- ⊕ Proposed Dozer Line
- Temporary Flight Restriction
- Escape Route
- Highlighted Manmade Feature
- ⊕ Other

DIV N

DIV A/Z

Label	Latitude	Longitude
ICP	39° 24.001'	-107° 5.538'
Helibase	39° 24.015'	-107° 5.706'
Basalt Helispot	39° 23.058'	-107° 0.343'
Zulu Helispot	39° 22.611'	-107° 3.835'
H-N	39° 25.417'	-107° 3.916'
Tree Farm Dip	39° 23.332'	-107° 4.867'
Lake Christine Dip	39° 22.183'	-107° 2.714'
Spring Park Reservoir Dip	39° 26.160'	-107° 5.380'
DP-1	39° 22.219'	-107° 2.621'
DP-2	39° 23.448'	-107° 5.071'
DP-5	39° 24.546'	-107° 5.277'
DP-10	39° 25.802'	-107° 4.828'
DP-15	39° 27.740'	-107° 3.435'
Command Repeater	39° 21.186'	-107° 5.593'



0 1 Miles
0 1,000 2,000 3,000 4,000 5,000 Feet
UTM Zone 13N NAD83
Prepared by: gholden 7/17/2018 20:16

USGS The National Map: National Boundaries Dataset, National Elevation Dataset, Geographic Names Information System, National Hydrography Dataset, National Land Cover Database, National Structures Dataset, and National Transportation Dataset; U.S. Census Bureau, TIGER/Line, HERE Road Data. Data Refreshed July, 2017.