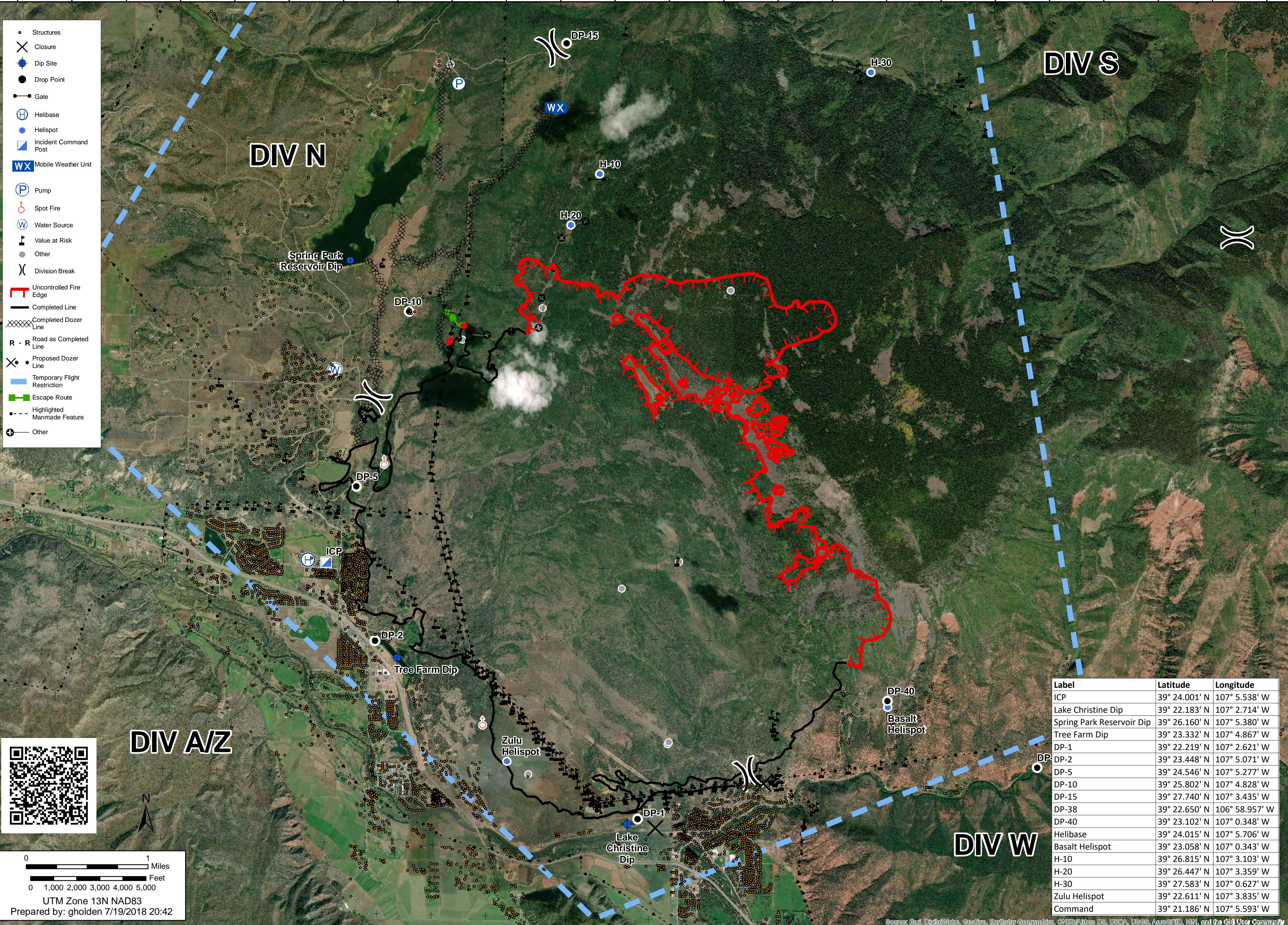


7977 acres
as of 7/19/2018 13:45

OPS
July 20, 2018

Lake Christine Fire
CO-EAX-000215

107°8.5'W 107°8'W 107°7.5'W 107°7'W 107°6.5'W 107°6'W 107°5.5'W 107°5'W 107°4.5'W 107°4'W 107°3.5'W 107°3'W 107°2.5'W 107°2'W 107°1.5'W 107°1'W 107°0.5'W 107°0'W 106°59.5'W 106°59'W 106°58.5'W 106°58'W 106°57.5'W 106°57'W



- Structures
- ✕ Closure
- ⊕ Dip Site
- Drop Point
- Gate
- ⊕ Helibase
- ⊕ Helispot
- ⊕ Incident Command Post
- WX Mobile Weather Unit
- ⊕ Pump
- ⊕ Spot Fire
- ⊕ Water Source
- ⊕ Value at Risk
- Other
- ⊕ Division Break
- Uncontrolled Fire Edge
- Completed Line
- ⊕ Completed Dozer Line
- R - R Road as Completed Line
- ⊕ Proposed Dozer Line
- Temporary Flight Restriction
- Escape Route
- ⊕ Highlighted Manmade Feature
- ⊕ Other

Label	Latitude	Longitude
ICP	39° 24.001' N	107° 5.538' W
Lake Christine Dip	39° 22.183' N	107° 2.714' W
Spring Park Reservoir Dip	39° 26.160' N	107° 5.380' W
Tree Farm Dip	39° 23.332' N	107° 4.867' W
DP-1	39° 22.219' N	107° 2.621' W
DP-2	39° 23.448' N	107° 5.071' W
DP-5	39° 24.546' N	107° 5.277' W
DP-10	39° 25.802' N	107° 4.828' W
DP-15	39° 27.740' N	107° 3.435' W
DP-38	39° 22.650' N	106° 58.957' W
DP-40	39° 23.102' N	107° 0.348' W
Helibase	39° 24.015' N	107° 5.706' W
Basalt Helispot	39° 23.058' N	107° 0.343' W
H-10	39° 26.815' N	107° 3.103' W
H-20	39° 26.447' N	107° 3.359' W
H-30	39° 27.583' N	107° 0.627' W
Zulu Helispot	39° 22.611' N	107° 3.835' W
Command	39° 21.186' N	107° 5.593' W



0 1 Miles
0 1,000 2,000 3,000 4,000 5,000 Feet
UTM Zone 13N NAD83
Prepared by: gholden 7/19/2018 20:42

Source: Esri, DigitalGlobe, GeoEye, Earthstar Geographics, CNES/Airbus DS, USDA, USGS, AeroGRID, IGN, and the GIS User Community