

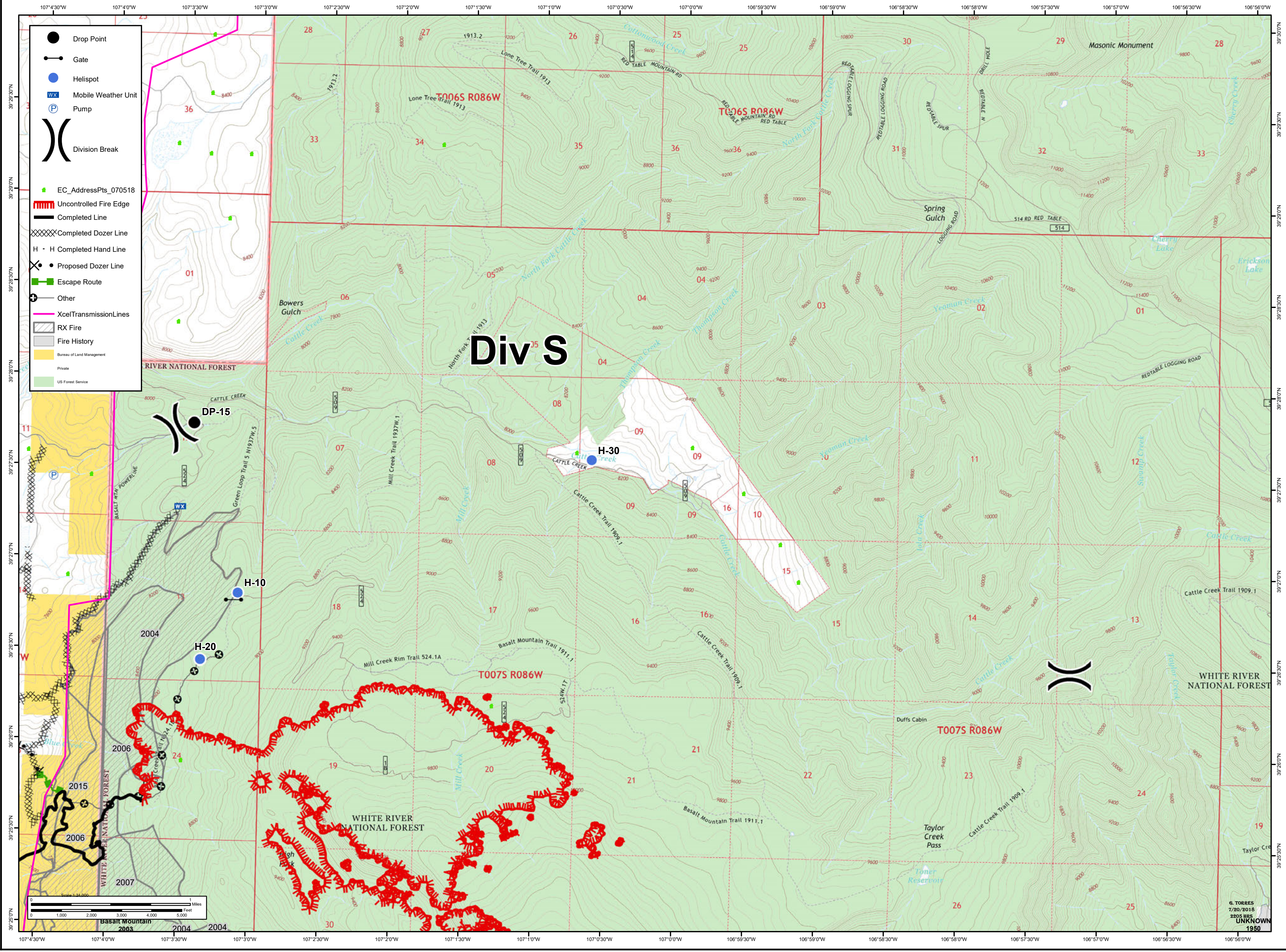


8,315 acres as of
7/19/2018 2315 hrs

Lake Christine Div S



July 21, 2018



- Drop Point
- Gate
- Helispot
- Mobile Weather Unit
- Pump
- Division Break
- EC_AddressPts_070518
- Uncontrolled Fire Edge
- Completed Line
- Completed Dozer Line
- Completed Hand Line
- Proposed Dozer Line
- Escape Route
- Other
- XcelTransmissionLines
- RX Fire
- Fire History
- Bureau of Land Management
- Private
- US Forest Service

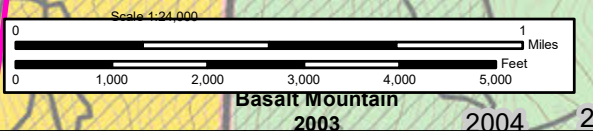
Div S

DP-15

H-10

H-20

H-30



G. TORRES
7/20/2018
2305 HRS
UNKNOWN
1950