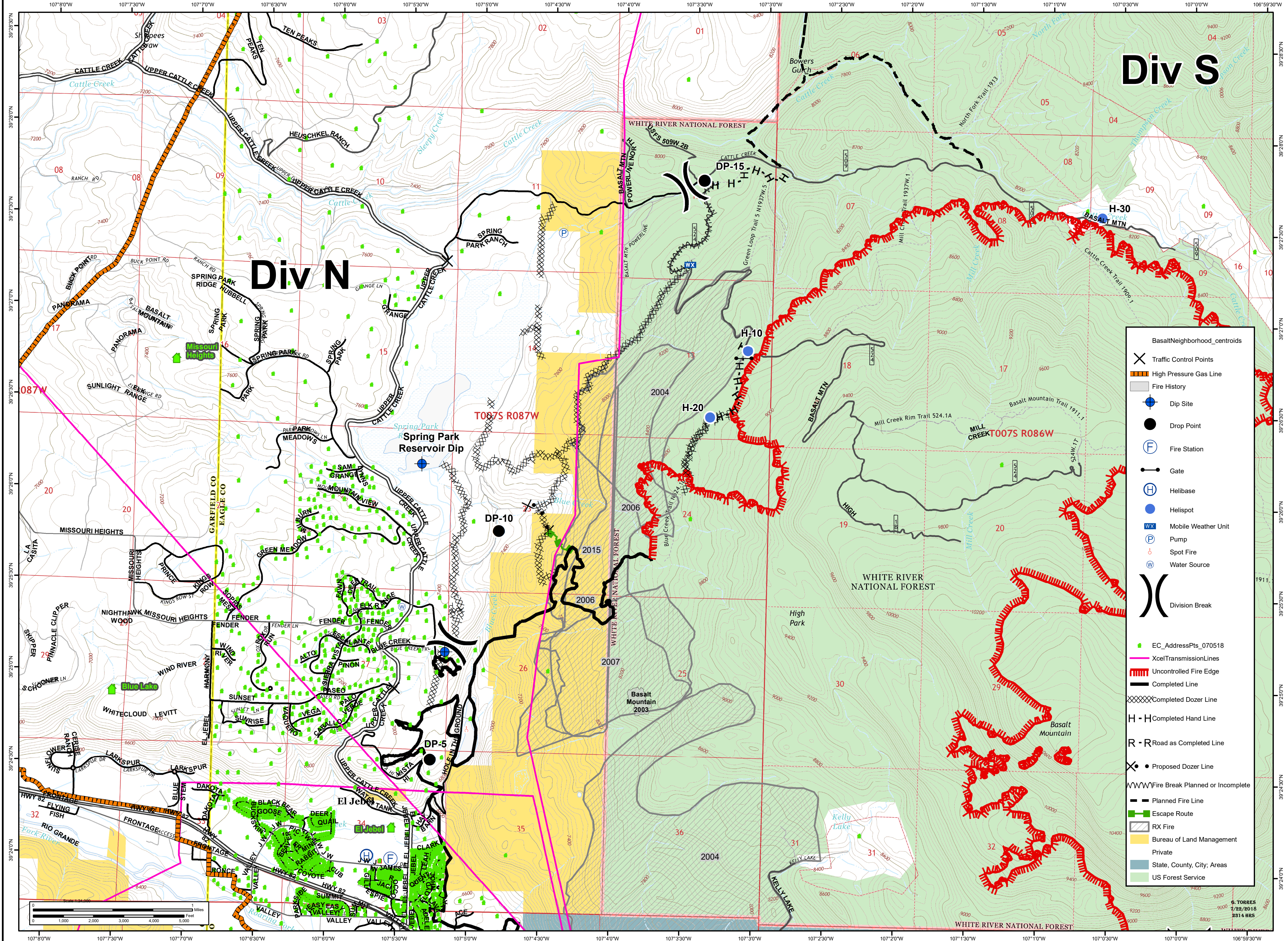




11,459 acres as of
7/22/2018 1015hrs

Lake Christine Div W

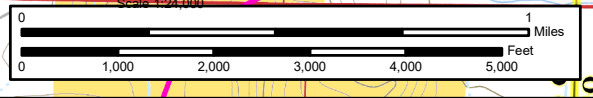
July 23, 2018
CO-EAX-000215



Div S

Div N

- BasaltNeighborhood_centroids
- X Traffic Control Points
 - High Pressure Gas Line
 - Fire History
 - Dip Site
 - Drop Point
 - Fire Station
 - Gate
 - Helibase
 - Helispot
 - Mobile Weather Unit
 - Pump
 - Spot Fire
 - Water Source
 - Division Break
 - EC_AddressPts_070518
 - XcelTransmissionLines
 - Uncontrolled Fire Edge
 - Completed Line
 - Completed Dozer Line
 - H - H Completed Hand Line
 - R - R Road as Completed Line
 - Proposed Dozer Line
 - Fire Break Planned or Incomplete
 - Planned Fire Line
 - Escape Route
 - RX Fire
 - Bureau of Land Management
 - Private
 - State, County, City, Areas
 - US Forest Service



G. TORRES
7/23/2018
2314 HRS