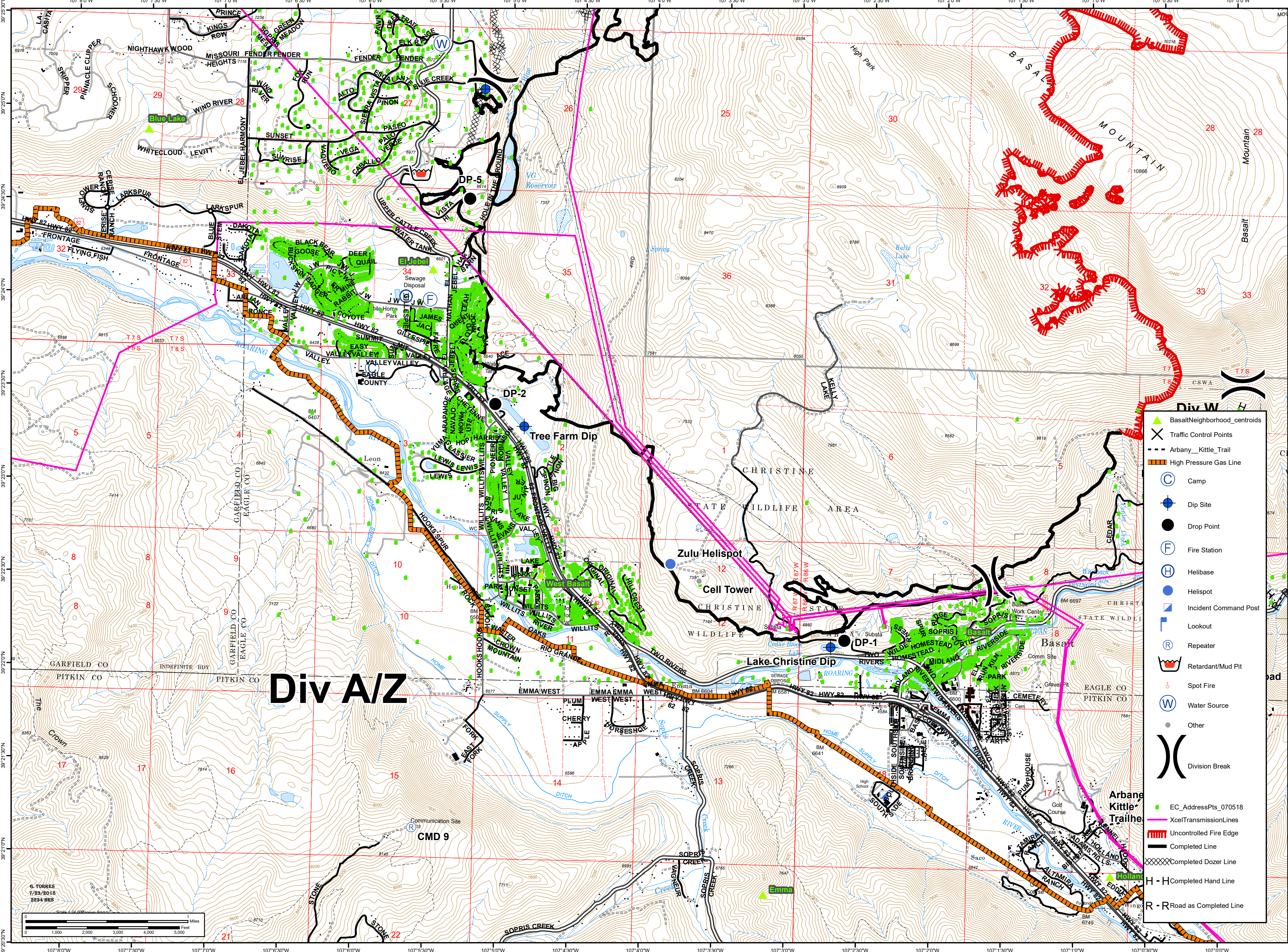




11,796 acres as of
7/23/2018 0130hrs

Lake Christine Div A/Z

July 24, 2018
CO-EAX-000215



- Div W**
- BasaltNeighborhood_centroids
 - Traffic Control Points
 - Arbyne_Kittle_Trail
 - High Pressure Gas Line
 - Camp
 - Dip Site
 - Drop Point
 - Fire Station
 - Helibase
 - Helispot
 - Incident Command Post
 - Lookout
 - Repeater
 - Retardant/Mud Pit
 - Spot Fire
 - Water Source
 - Other
 - Division Break
 - EC_AddressPts_070518
 - XcelTransmissionLines
 - Uncontrolled Fire Edge
 - Completed Line
 - Completed Dozer Line
 - H - H Completed Hand Line
 - R - R Road as Completed Line

