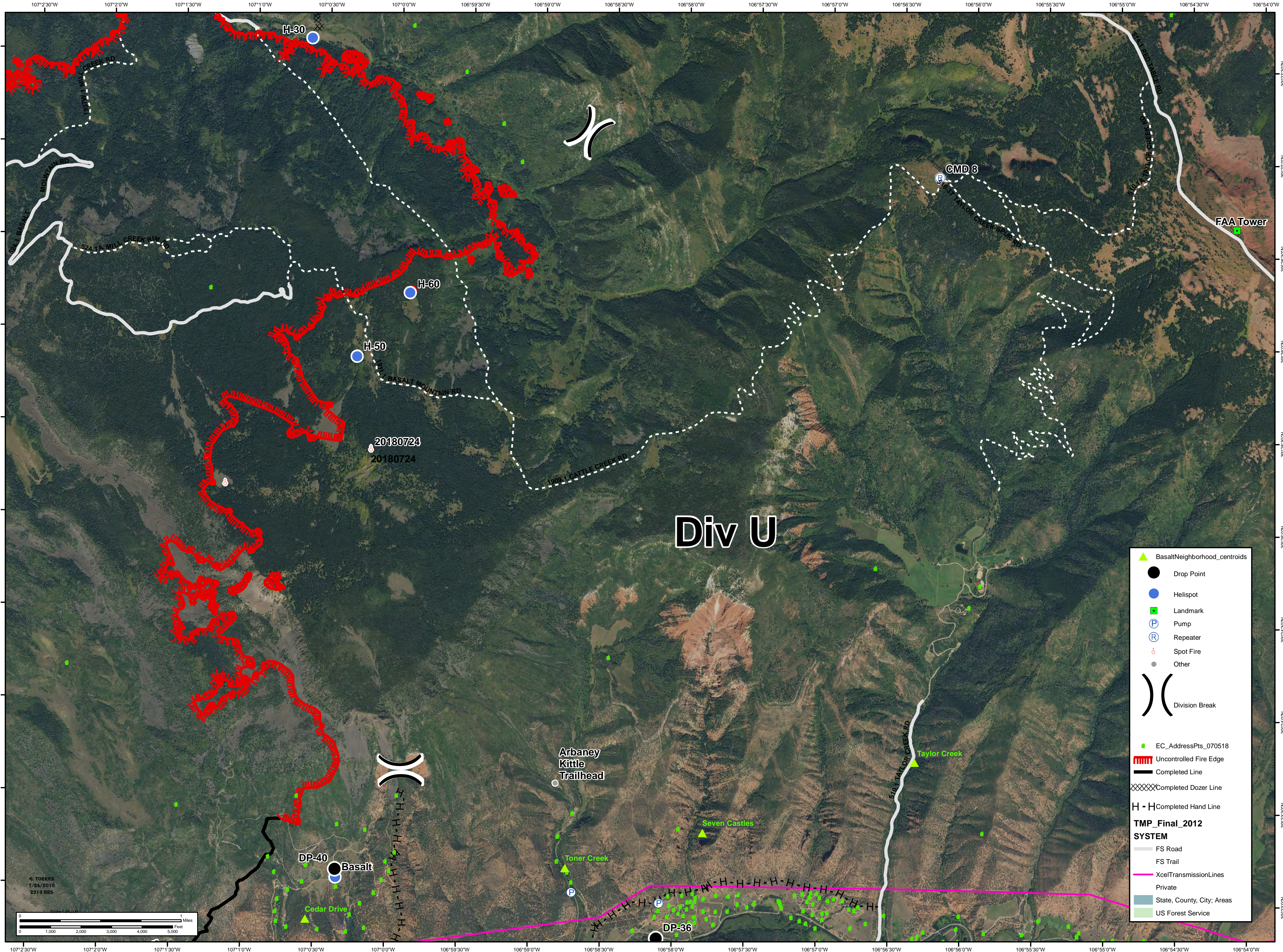




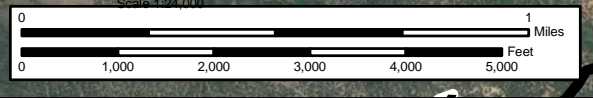
11,878 acres as of
7/23/2018 2300hrs

Lake Christine Div U

July 25, 2018
CO-EAX-000215



G. TORRES
7/24/2018
2313 HRS



- BasaltNeighborhood_centroids
- Drop Point
- Helispot
- Landmark
- Pump
- Repeater
- Spot Fire
- Other
- Division Break
- EC_AddressPts_070518
- Uncontrolled Fire Edge
- Completed Line
- Completed Dozer Line
- Completed Hand Line
- TMP_Final_2012 SYSTEM**
- FS Road
- FS Trail
- XcelTransmissionLines
- Private
- State, County, City, Areas
- US Forest Service