

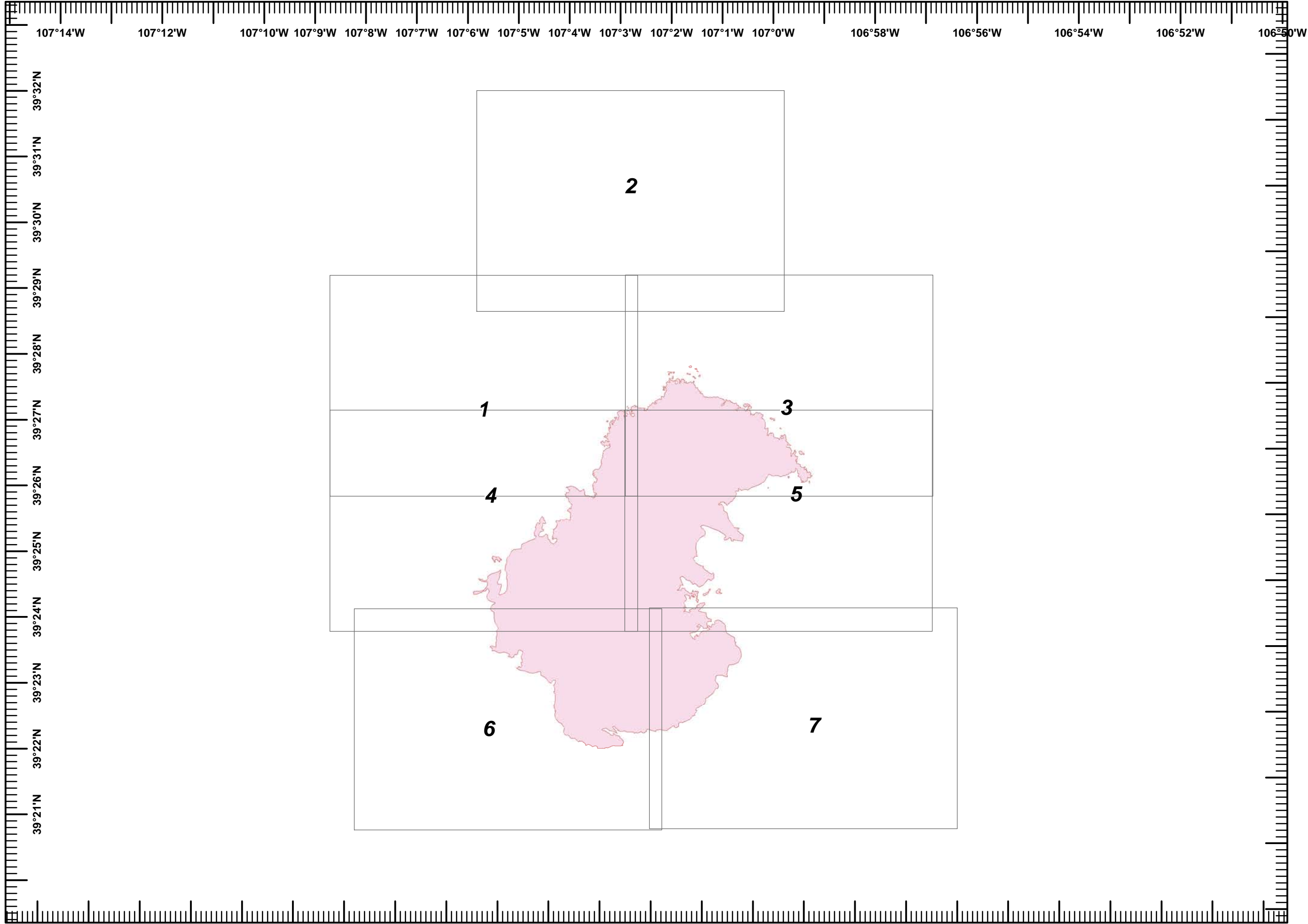
Lake Christine Fire
CO-EAX-000215
July 25, 2018
Day
UTM 13 NAD83
IAP INDEX

11,878 acres @ 2300
20180723

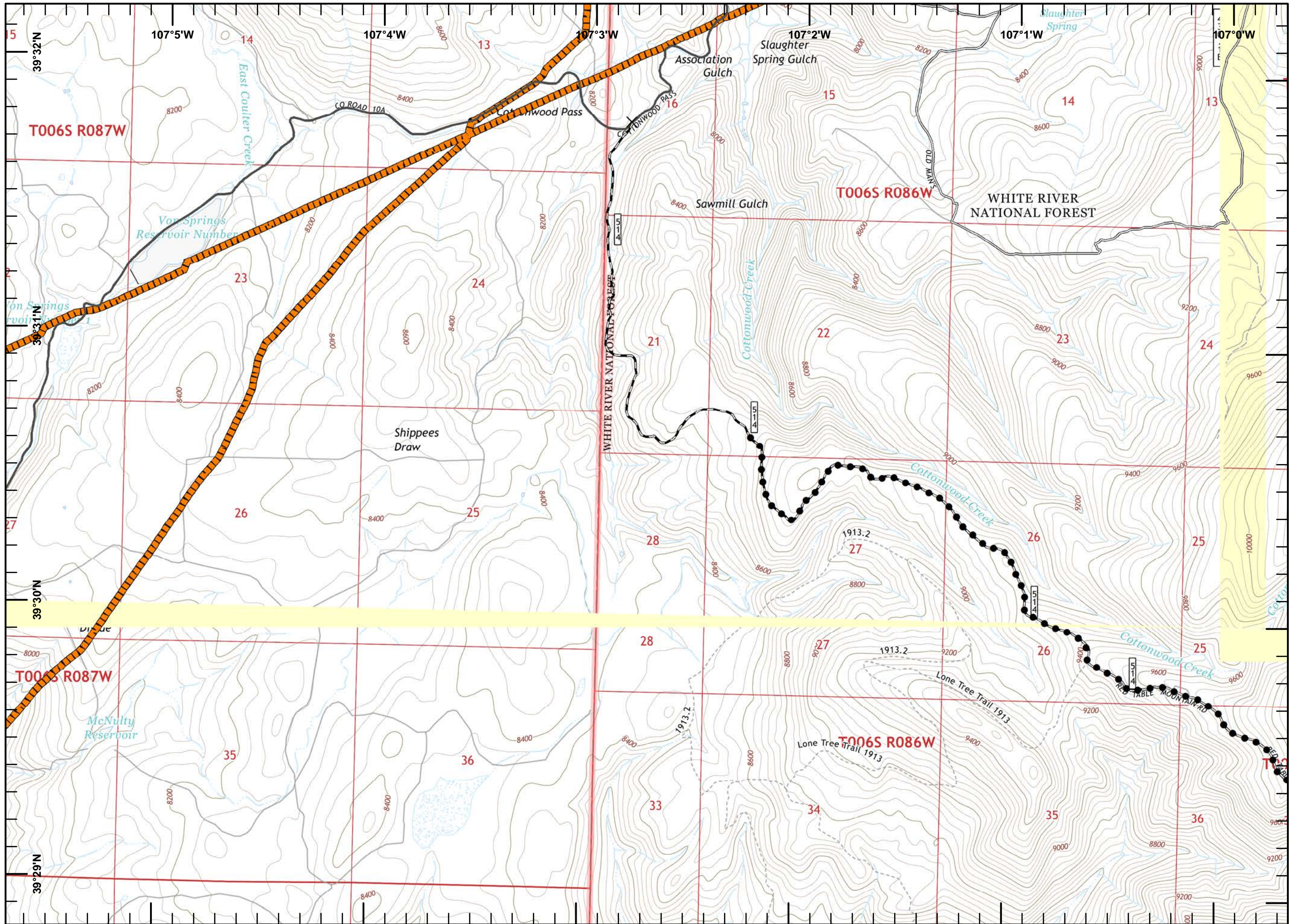
index
Wildfire Daily Fire Perimeter



JOlson
July 24, 2018
2256

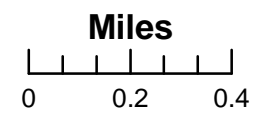


**Lake Christine Fire
CO-EAX-000215
July 25, 2018
Day
UTM 13 NAD83**



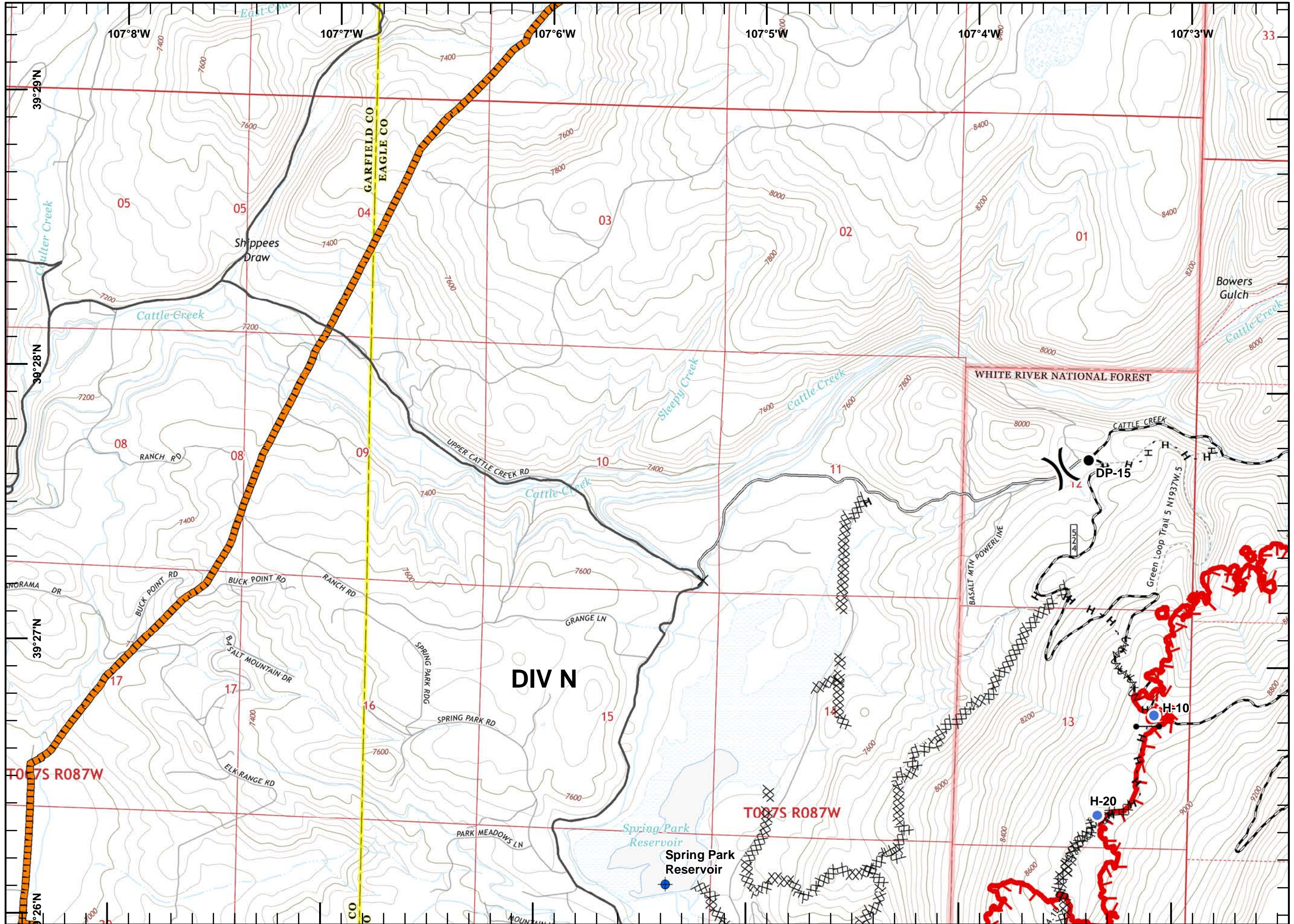
Legend

- ✕ Road Closures
- Planned Secondary Line
- ▨ High Pressure Gas Line



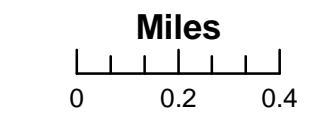
JOlson
July 24, 2018
2259

Lake Christine Fire
CO-EAX-000215
July 25, 2018
Day
UTM 13 NAD83



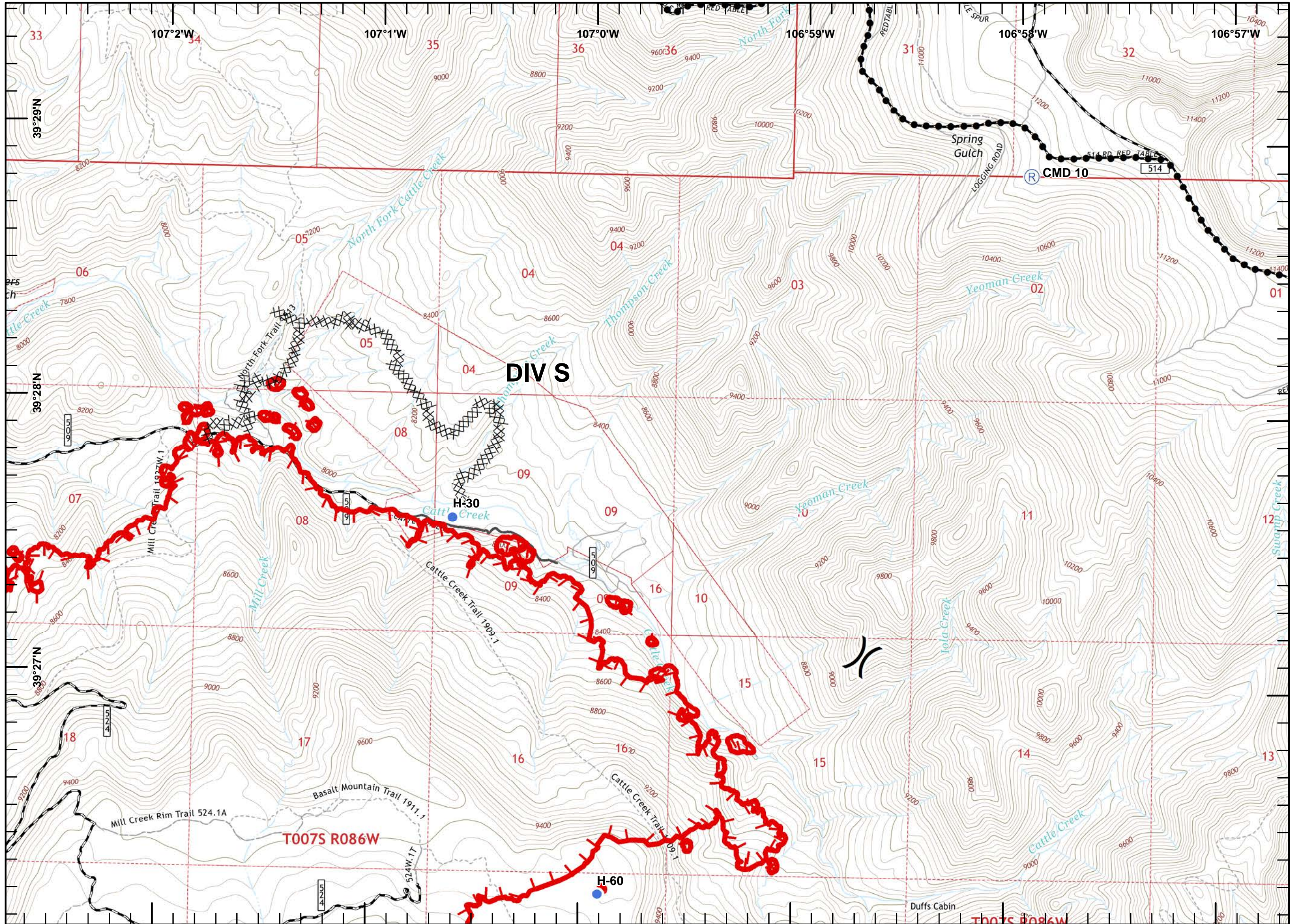
Legend

- Dip Site
- Drop Point
- Gate
- Helispot
- Division Break
- Road Closures
- Uncontrolled Fire Edge
- Completed Dozer Line
- Completed Hand Line
- Fire Break Planned or Incomplete
- High Pressure Gas Line



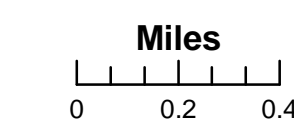
JOlson
 July 24, 2018
 2259

Lake Christine Fire
 CO-EAX-000215
 July 25, 2018
 Day
 UTM 13 NAD83



Legend

- Helispot
- R Repeater
-) (Division Break
- Uncontrolled Fire Edge
- Completed Dozer Line
- Planned Secondary Line

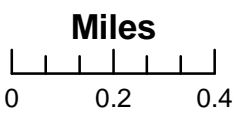


JOlson
 July 24, 2018
 2300

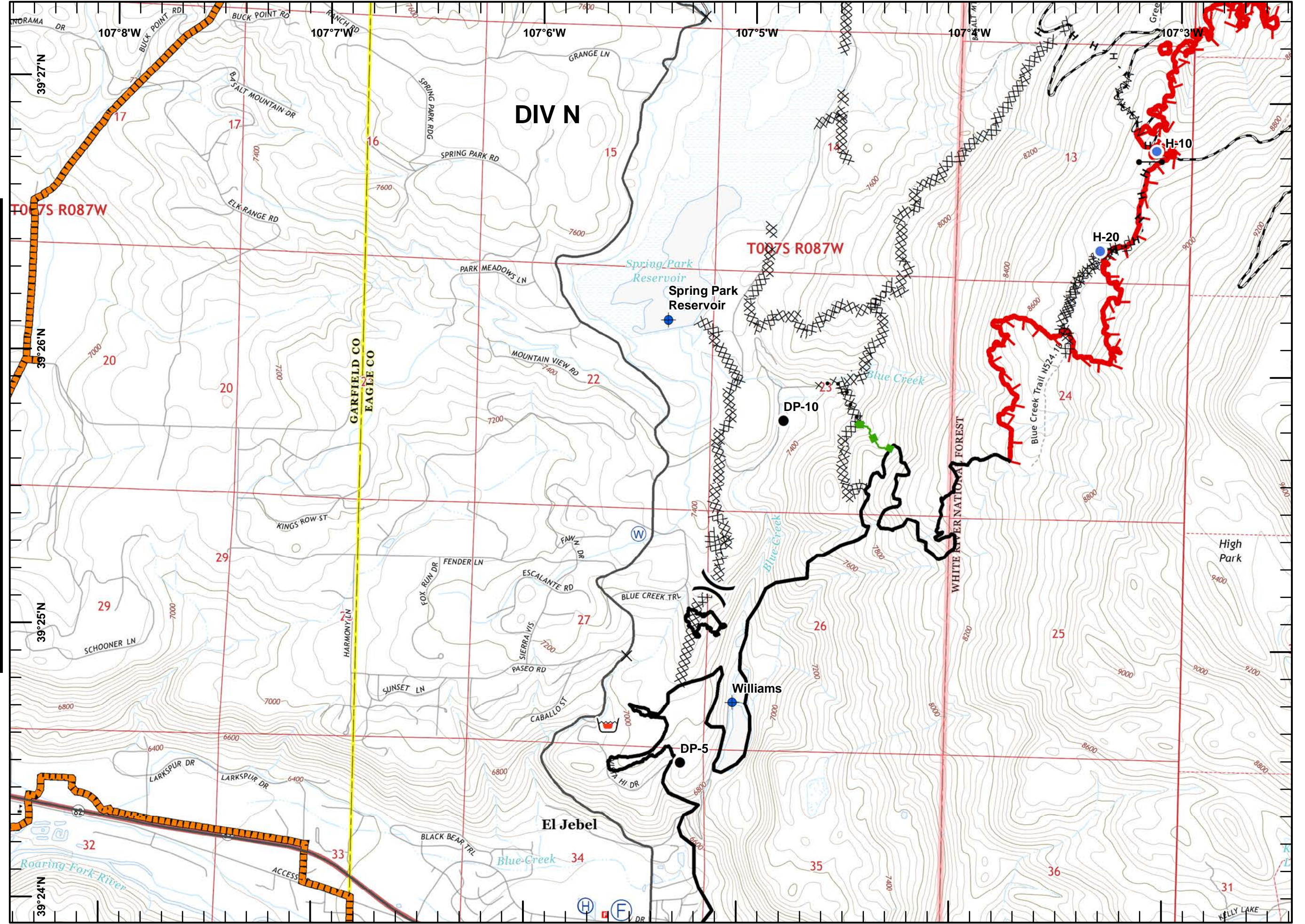
Lake Christine Fire
CO-EAX-000215
July 25, 2018
Day
UTM 13 NAD83

Legend

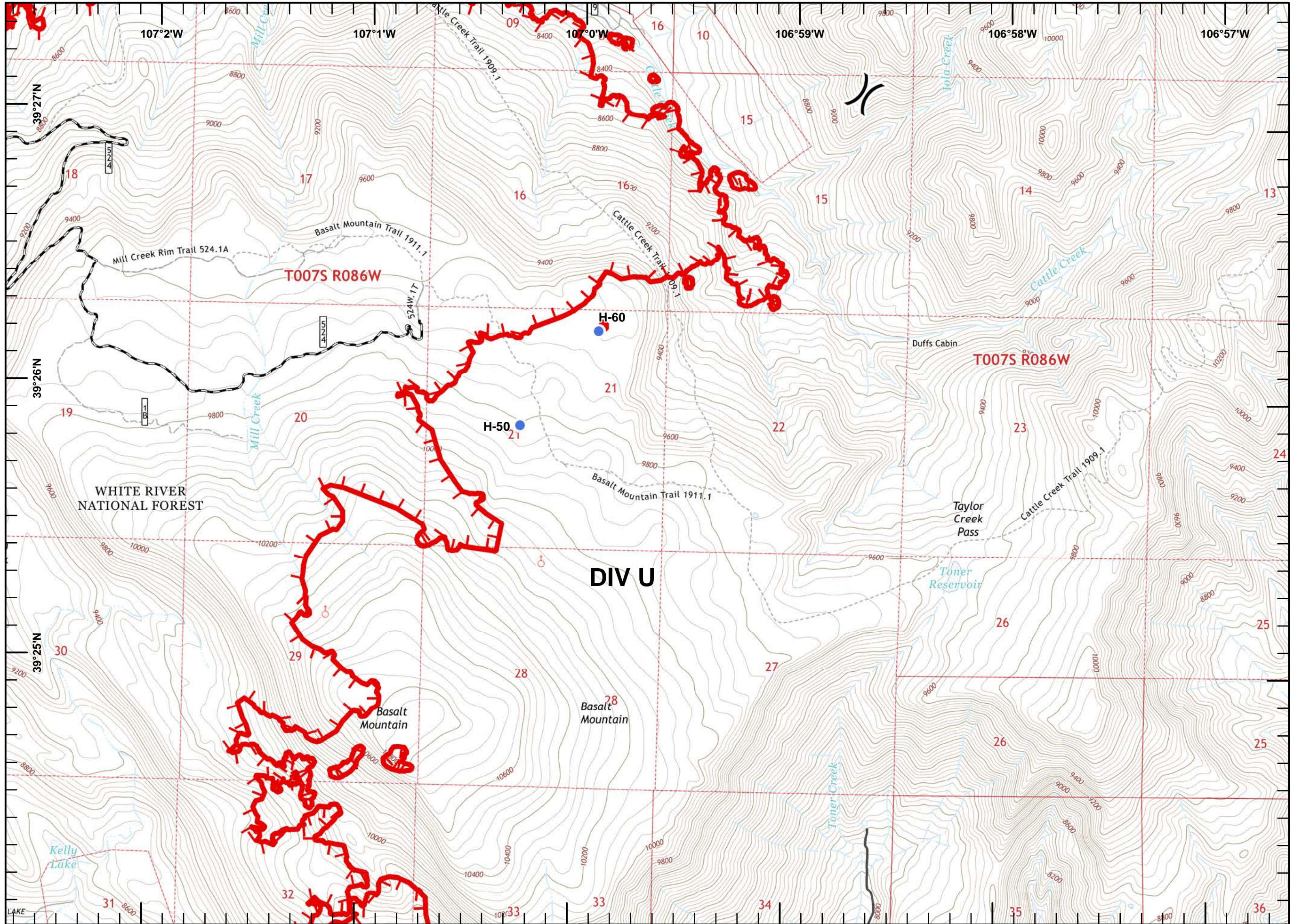
- Dip Site
- Drop Point
- Fire Station
- Gate
- Helibase
- Helispot
- Retardant/Mud Pit
- Water Source
- Division Break
- Road Closures
- Uncontrolled Fire Edge
- Completed Line
- Completed Dozer Line
- Completed Hand Line
- Proposed Dozer Line
- Fire Break Planned or Incomplete
- Escape Route
- High Pressure Gas Line



JOlson
 July 24, 2018
 2302

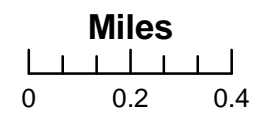


Lake Christine Fire
CO-EAX-000215
July 25, 2018
Day
UTM 13 NAD83



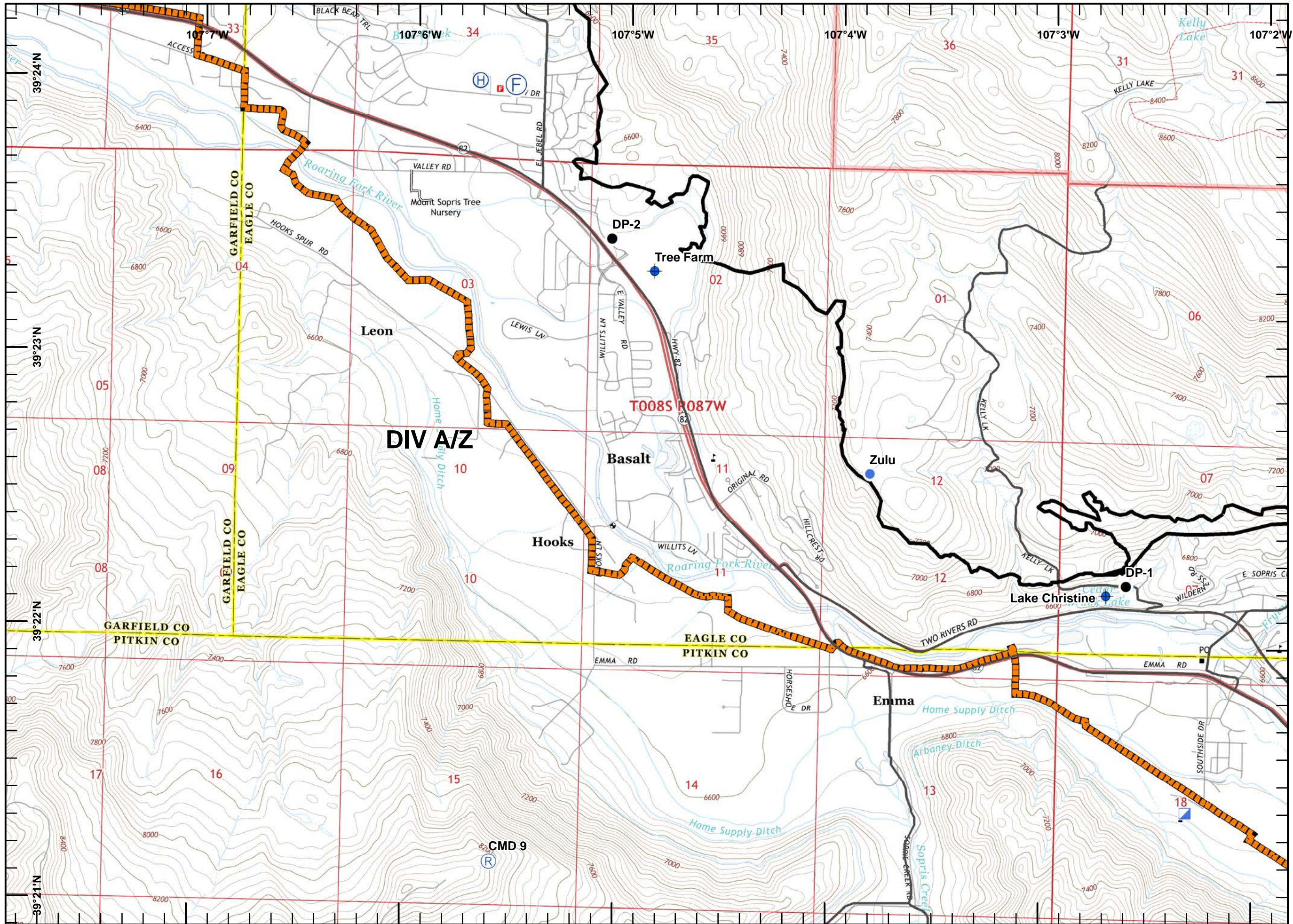
Legend

- Helispot
- ♂ Spot Fire
-) (Division Break
- Uncontrolled Fire Edge



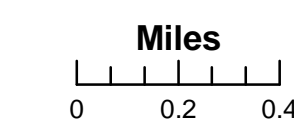
JOlson
 July 24, 2018
 2303

Lake Christine Fire
 CO-EAX-000215
 July 25, 2018
 Day
 UTM 13 NAD83



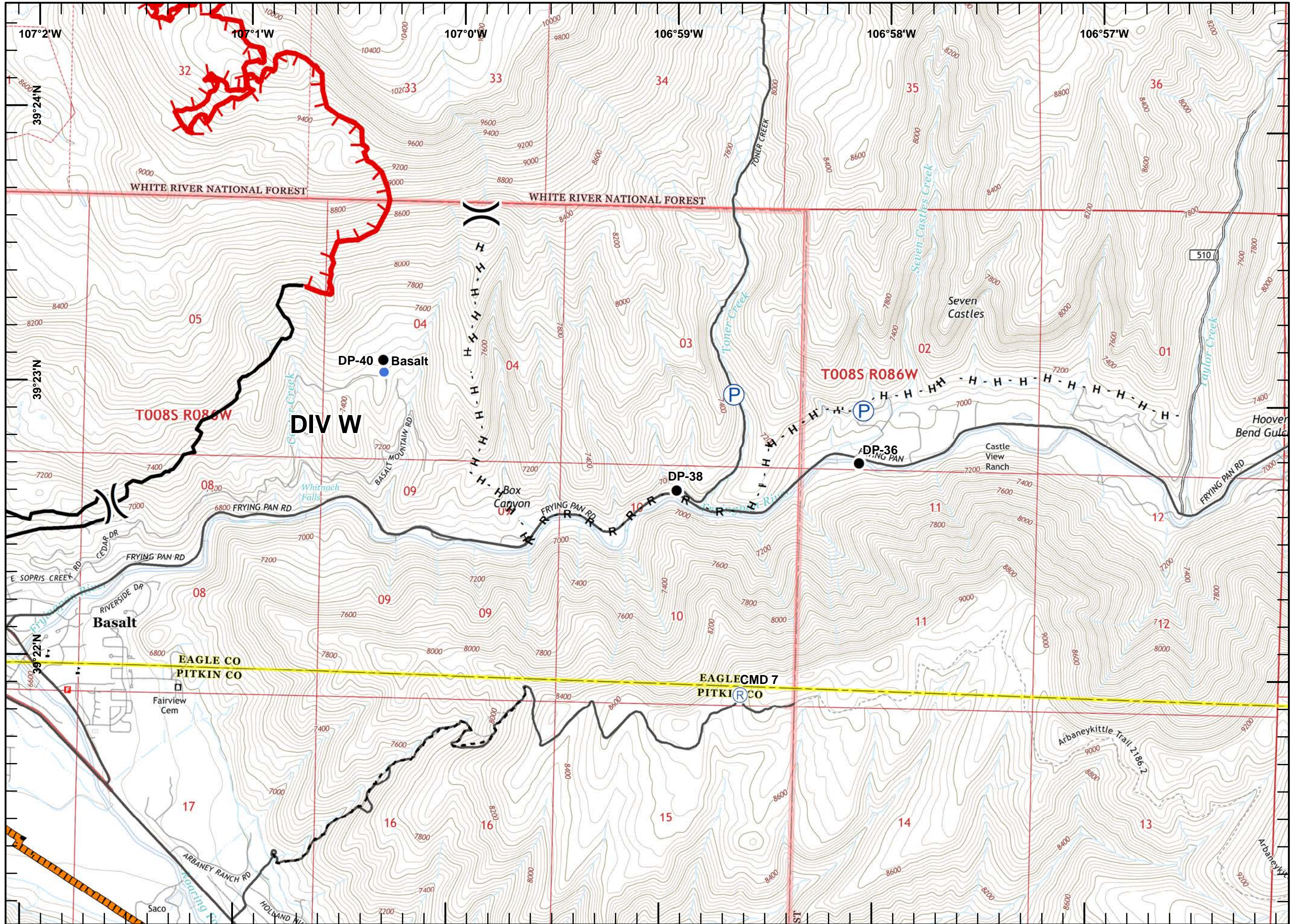
Legend

- Dip Site
- Drop Point
- Fire Station
- Helibase
- Helispot
- Incident Command Post
- Repeater
- Completed Line
- High Pressure Gas Line



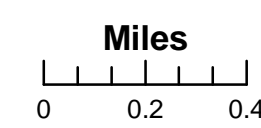
JOlson
 July 24, 2018
 2304

Lake Christine Fire
CO-EAX-000215
July 25, 2018
Day
UTM 13 NAD83



Legend

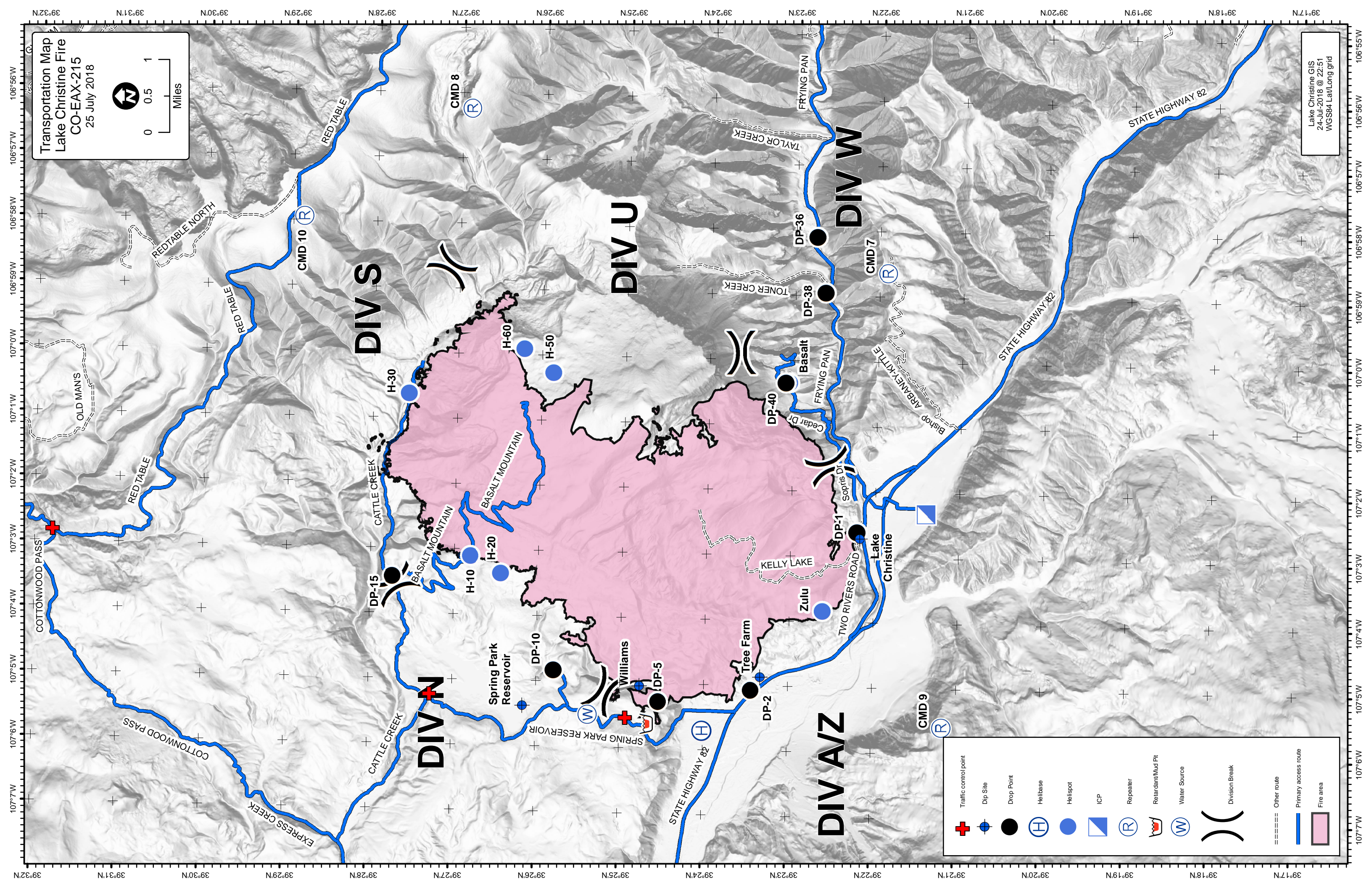
- Drop Point
- Helispot
- (P) Pump
- (R) Repeater
-) (Division Break
- ▬ Uncontrolled Fire Edge
- ▬ Completed Line
- H - Completed Hand Line
- R - Road as Completed Line
- ▨ High Pressure Gas Line
- - - Arbany Kittle Trail



JOlson
 July 24, 2018
 2305

Transportation Map
 Lake Christine Fire
 CO-EAX-215
 25 July 2018

Lake Christine GIS
 24-Jul-2018 @ 22:51
 WGS84 Lat/Long grid



	Traffic control point
	Dip Site
	Drop Point
	Helibase
	Helispot
	ICP
	Repeater
	Retardant/Mud Pit
	Water Source
	Division Break
	Other route
	Primary access route
	Fire area

DIV S

DIV U

DIV W

DIV N

DIV A/Z

CMD 10 (R)

CMD 8 (R)

CMD 7 (R)

CMD 9 (R)

Spring Park Reservoir

Lake Christine

STATE HIGHWAY 82

STATE HIGHWAY 82

COTTONWOOD PASS

COTTONWOOD PASS

RED TABLE

RED TABLE NORTH

RED TABLE

CATTLE CREEK

CATTLE CREEK

CATTLE CREEK

BASALT MOUNTAIN

BASALT MOUNTAIN

BASALT MOUNTAIN

BASALT MOUNTAIN

BASALT MOUNTAIN

Tree Farm

Zulu

KELLY LAKE

Basalt

FRYING PAN

TONER CREEK

TAYLOR CREEK

FRYING PAN

Sopris Dr

Cedar Dr

FRYING PAN

ARBANEX-KITTE

Bishop

TWO RIVERS ROAD

STATE HIGHWAY 82

DP-15

H-10

H-20

H-60

H-50

H-30

H-60

H-50

H-30

DP-5

DP-10

DP-2

DP-40

DP-38

DP-36

DP-1

DP-2

DP-5

DP-10

DP-2

DP-40

DP-38

DP-36

DP-1

DP-2

DP-5

DP-10

DP-2

DP-40

DP-38

DP-36

DP-1

DP-2

DP-5

DP-10

DP-2

DP-40

DP-38

DP-36

DP-1

DP-2

DP-5

DP-10

DP-2

DP-40

DP-38

DP-36

DP-1

DP-2

DP-5

DP-10

DP-2

DP-40

DP-38

DP-36

DP-1

DP-2

DP-5

DP-10

DP-2

DP-40

DP-38

DP-36

DP-1

DP-2

DP-5

DP-10

DP-2

DP-40

DP-38

DP-36

DP-1

DP-2

DP-5

DP-10

DP-2

DP-40

DP-38

DP-36

DP-1

DP-2

DP-5

DP-10

DP-2

DP-40

DP-38

DP-36

DP-1

DP-2

DP-5

DP-10

DP-2

DP-40

DP-38

DP-36

DP-1

DP-2

DP-5

DP-10

DP-2

DP-40

DP-38

DP-36

DP-1

DP-2

DP-5

DP-10

DP-2

DP-40

DP-38

DP-36

DP-1

DP-2

DP-5

DP-10

DP-2

DP-40

DP-38

DP-36

DP-1

DP-2

DP-5

DP-10

DP-2

DP-40

DP-38

DP-36

DP-1

DP-2

DP-5

DP-10

DP-2

DP-40

DP-38

DP-36

DP-1

DP-2

DP-5

DP-10

DP-2

DP-40

DP-38

DP-36

DP-1

DP-2

DP-5

DP-10

DP-2

DP-40

DP-38

DP-36

DP-1

DP-2

DP-5

DP-10

DP-2

DP-40

DP-38

DP-36

DP-1

DP-2

DP-5

DP-10

DP-2

DP-40

DP-38

DP-36

DP-1

DP-2

DP-5

DP-10

DP-2

DP-40

DP-38

DP-36

DP-1

DP-2

DP-5

DP-10

DP-2

DP-40

DP-38

DP-36

DP-1

DP-2

DP-5

DP-10

DP-2

DP-40

DP-38

DP-36

DP-1

DP-2

DP-5

DP-10

DP-2

DP-40

DP-38

DP-36

DP-1

DP-2

DP-5

DP-10

DP-2

DP-40

DP-38

DP-36

DP-1

DP-2

DP-5

DP-10

DP-2

DP-40

DP-38

DP-36

DP-1

DP-2

DP-5

DP-10

DP-2

DP-40

DP-38

DP-36

DP-1

DP-2

DP-5

DP-10

DP-2

DP-40

DP-38

DP-36

DP-1

DP-2

DP-5

DP-10

DP-2

DP-40

DP-38

DP-36

DP-1

DP-2

DP-5

DP-10

DP-2

DP-40

DP-38

DP-36