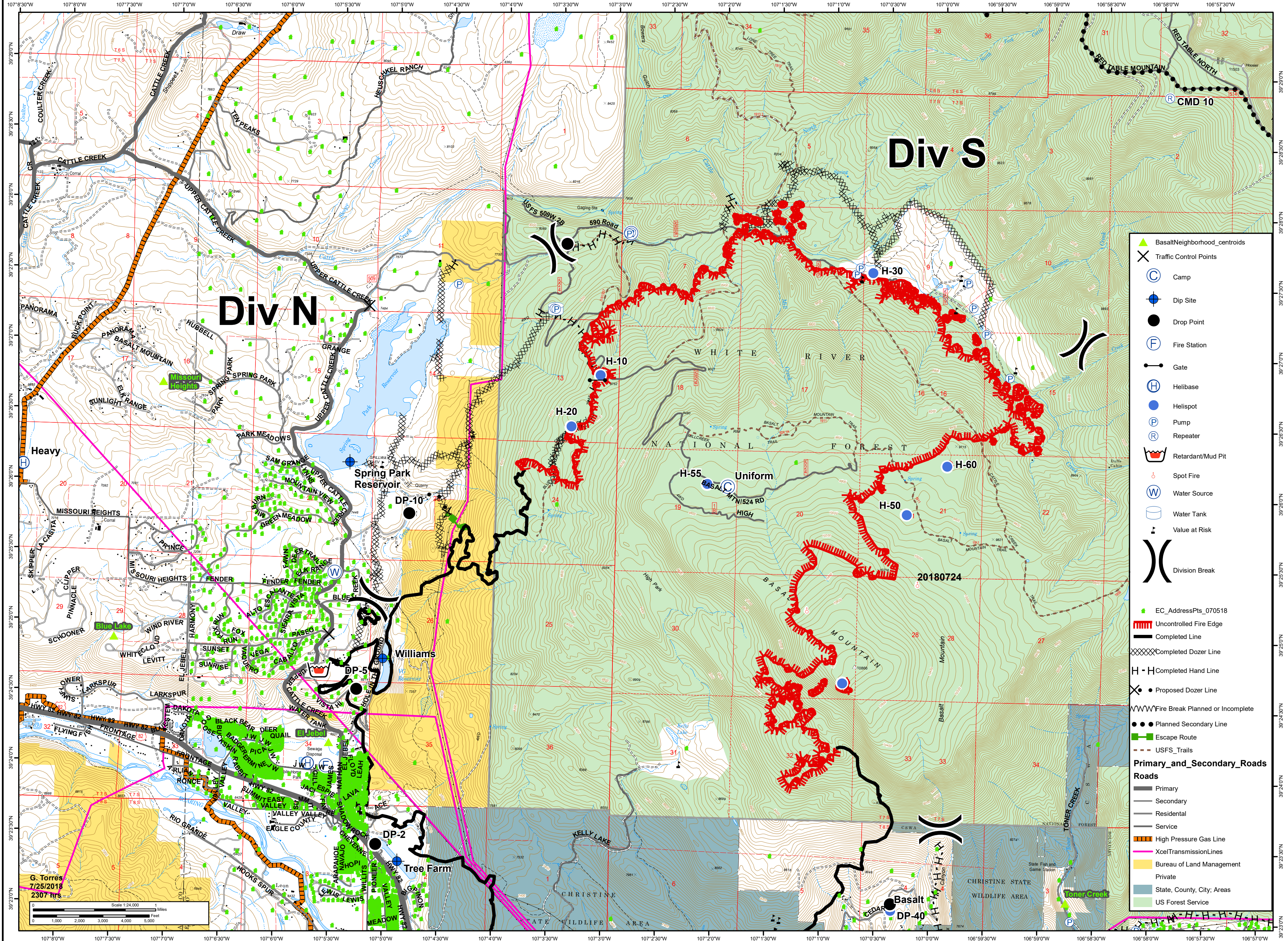




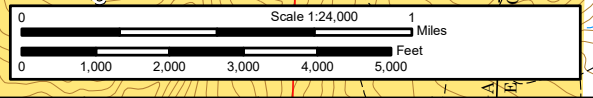
11,990 acres as of
7/24/2018 2215 hrs

Lake Christine Div N

July 26, 2018
CO-EAX-000215



- BasaltNeighborhood_centroids
- Traffic Control Points
- Camp
- Dip Site
- Drop Point
- Fire Station
- Gate
- Helibase
- Helispot
- Pump
- Repeater
- Retardant/Mud Pit
- Spot Fire
- Water Source
- Water Tank
- Value at Risk
- Division Break
- EC_AddressPts_070518
- Uncontrolled Fire Edge
- Completed Line
- Completed Dozer Line
- Completed Hand Line
- Proposed Dozer Line
- Fire Break Planned or Incomplete
- Planned Secondary Line
- Escape Route
- USFS_Trails
- Primary_and_Secondary_Roads**
- Roads**
- Primary
- Secondary
- Residential
- Service
- High Pressure Gas Line
- XcelTransmissionLines
- Bureau of Land Management
- Private
- State, County, City, Areas
- US Forest Service



G. Torres
7/25/2018
2307 hrs