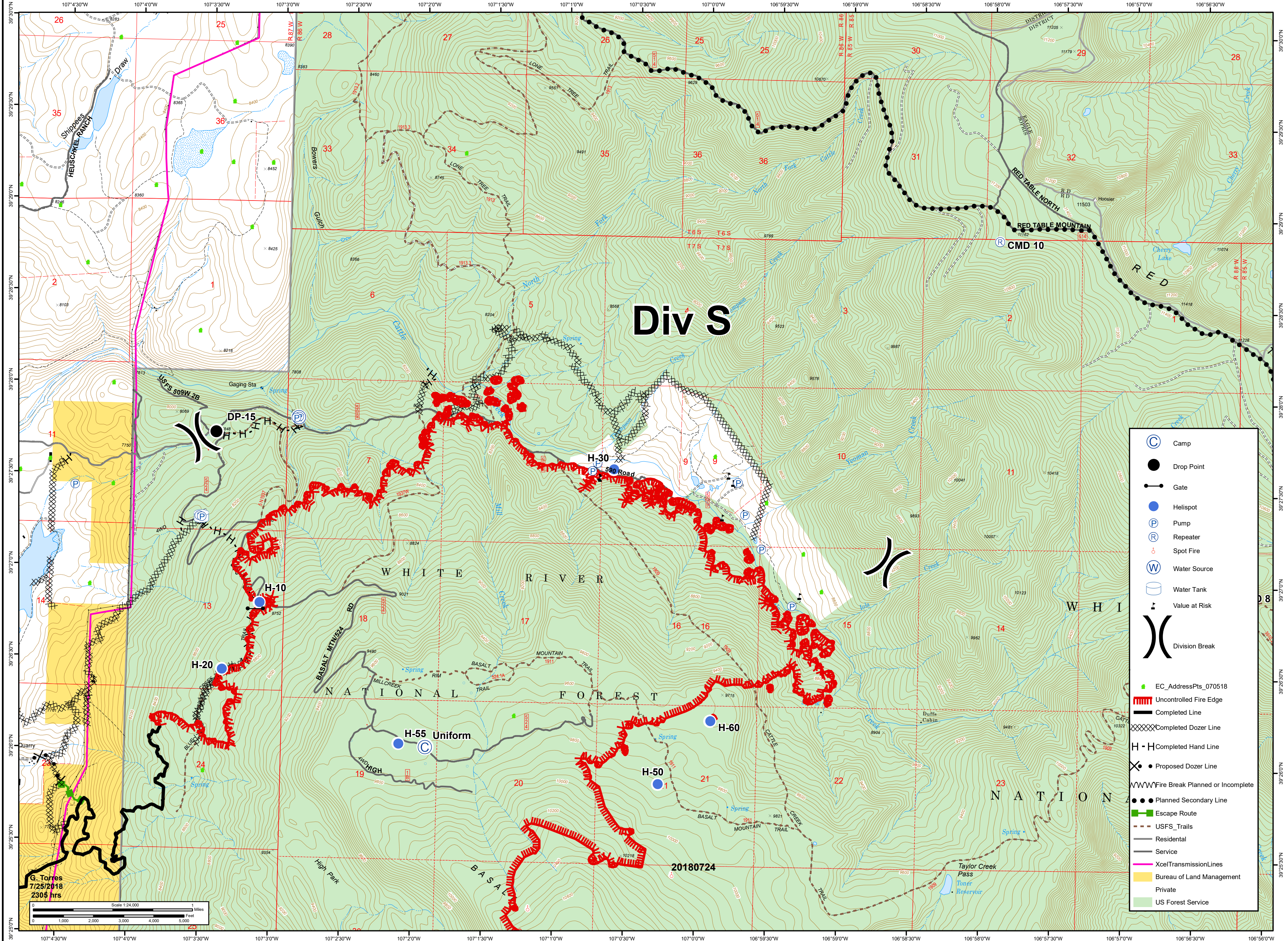




11,990 acres as of  
7/24/2018 2215 hrs

# Lake Christine Div S

July 26, 2018  
CO-EAX-000215



Div S

- Camp
- Drop Point
- Gate
- Helispot
- Pump
- Repeater
- Spot Fire
- Water Source
- Water Tank
- Value at Risk
- Division Break
- EC\_AddressPts\_070518
- Uncontrolled Fire Edge
- Completed Line
- Completed Dozer Line
- Completed Hand Line
- Proposed Dozer Line
- Fire Break Planned or Incomplete
- Planned Secondary Line
- Escape Route
- USFS\_Trails
- Residential
- Service
- XcelTransmissionLines
- Bureau of Land Management
- Private
- US Forest Service

G. Torres  
7/25/2018  
2305 hrs

Scale 1:24,000

0 1 2 3 4 5 Miles

0 1000 2000 3000 4000 5000 Feet

20180724