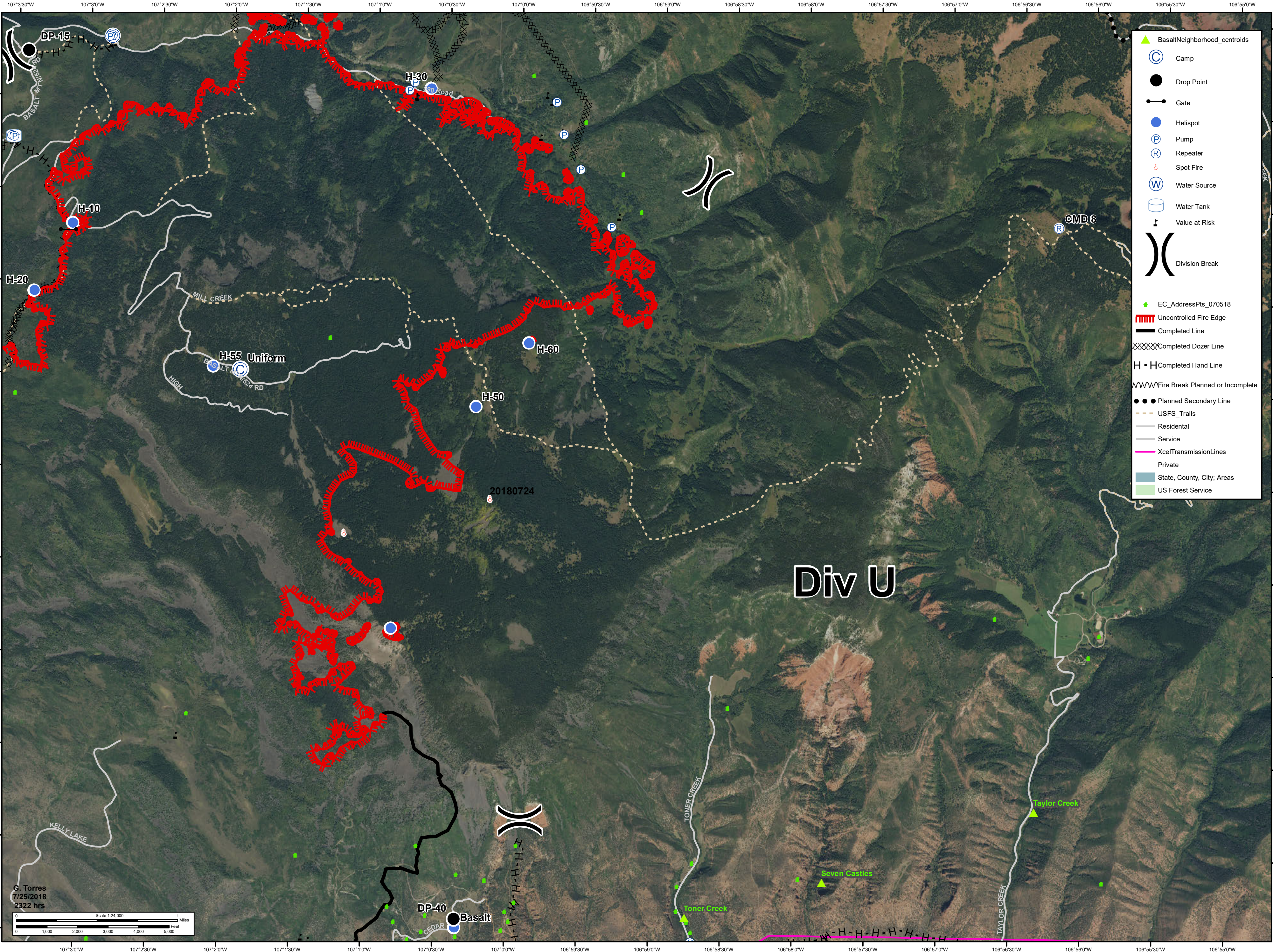




11,990 acres as of
7/24/2018 2215 hrs

Lake Christine Div U

July 26, 2018
CO-EAX-000215



- BasaltNeighborhood_centroids
- Camp
- Drop Point
- Gate
- Helispot
- Pump
- Repeater
- Spot Fire
- Water Source
- Water Tank
- Value at Risk
- Division Break
- EC_AddressPts_070518
- Uncontrolled Fire Edge
- Completed Line
- Completed Dozer Line
- Completed Hand Line
- Fire Break Planned or Incomplete
- Planned Secondary Line
- USFS_Trails
- Residential
- Service
- XcelTransmissionLines
- Private
- State, County, City; Areas
- US Forest Service

G. Torres
7/25/2018
2322 hrs

Scale 1:24,000

0 1,000 2,000 3,000 4,000 5,000 Feet

0 1 2 Miles