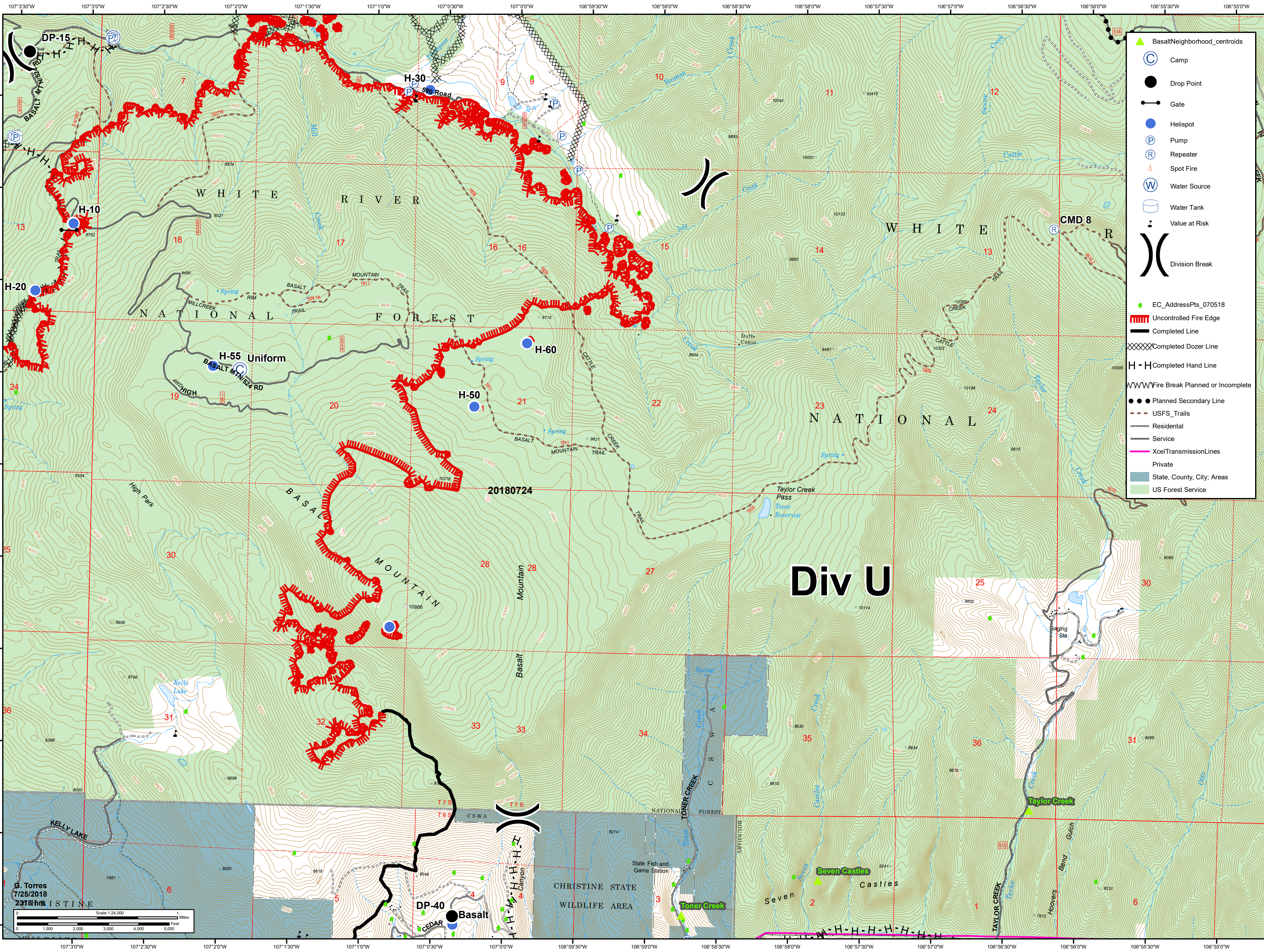




11,990 acres as of  
7/24/2018 2215 hrs

# Lake Christine Div U

July 26, 2018  
CO-EAX-000215



- BasaltNeighborhood\_centroids
- Camp
- Drop Point
- Gate
- Helispot
- Pump
- Repeater
- Spot Fire
- Water Source
- Water Tank
- Value at Risk
- Division Break
- EC\_AddressPts\_070518
- Uncontrolled Fire Edge
- Completed Line
- Completed Dozer Line
- Completed Hand Line
- Fire Break Planned or Incomplete
- Planned Secondary Line
- USFS\_Trails
- Residential
- Service
- XcelTransmissionLines
- Private
- State, County, City; Areas
- US Forest Service

G. Torres  
7/25/2018  
2318 hrs

Scale 1:24,000

0 1,000 2,000 3,000 4,000 5,000 Feet