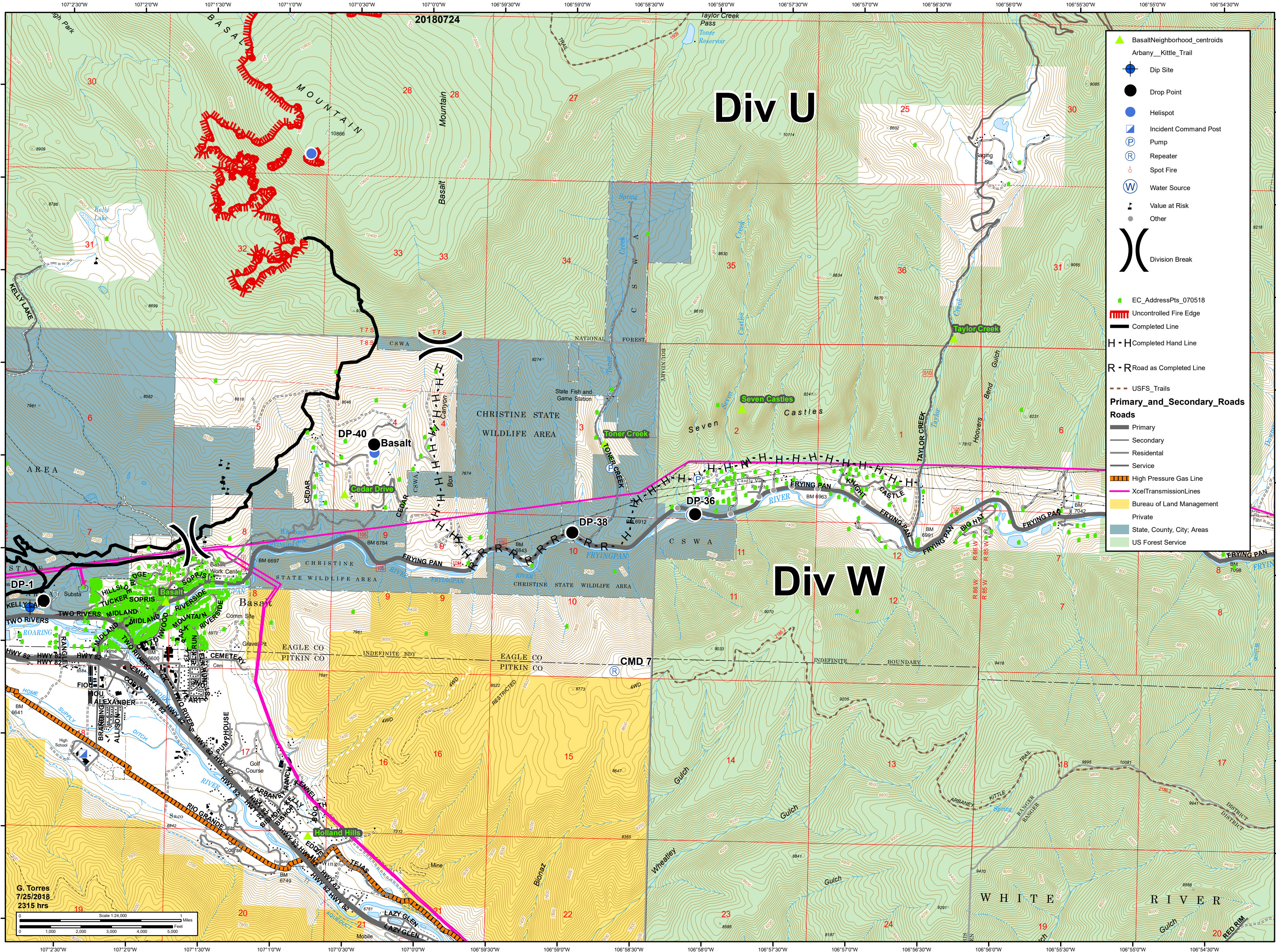




11,990 acres as of
7/24/2018 2215 hrs

Lake Christine Div W

July 26, 2018
CO-EAX-000215



- ▲ BasaltNeighborhood_centroids
- Arbany_Kittle_Trail
- ⊕ Dip Site
- Drop Point
- Helispot
- ⊠ Incident Command Post
- P Pump
- R Repeater
- ⊙ Spot Fire
- W Water Source
- ▲ Value at Risk
- Other
-) Division Break
- EC_AddressPts_070518
- ▬▬▬ Uncontrolled Fire Edge
- ▬▬▬ Completed Line
- H-H Completed Hand Line
- R-R Road as Completed Line
- - - USFS_Trails
- Primary_and_Secondary_Roads**
- Roads**
- ▬ Primary
- ▬ Secondary
- ▬ Residential
- ▬ Service
- ▬▬▬ High Pressure Gas Line
- ▬▬▬ XcelTransmissionLines
- ▬▬▬ Bureau of Land Management
- ▬▬▬ Private
- ▬▬▬ State, County, City; Areas
- ▬▬▬ US Forest Service

G. Torres
7/25/2018
2315 hrs

Scale 1:24,000

0 1 2 3 4 5 Miles

0 1000 2000 3000 4000 5000 Feet