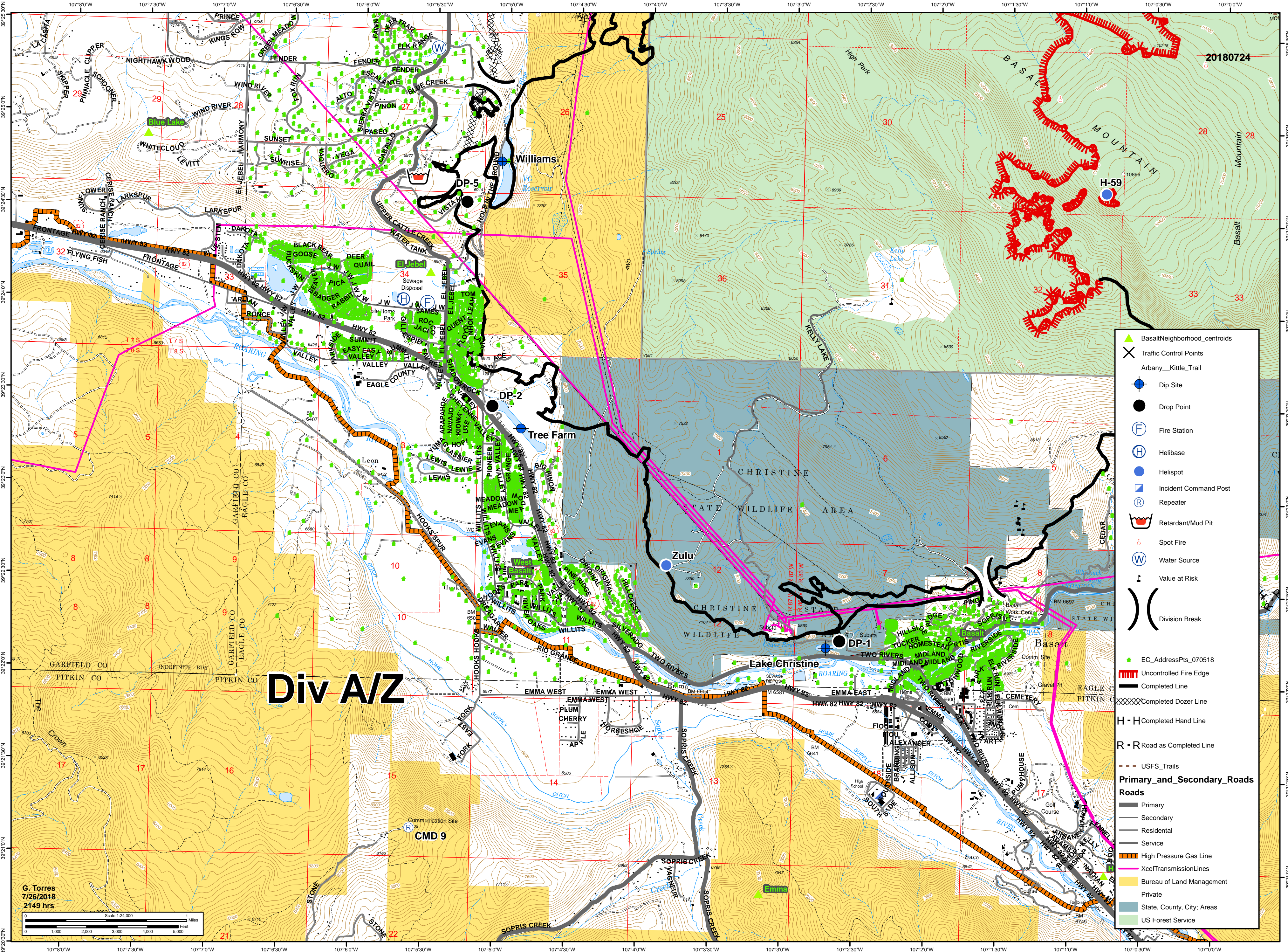




12,186 acres as of  
7/26/2018 1430 hrs

# Lake Christine Div AZ

July 27, 2018  
CO-EAX-000215



## Div A/Z

- BasaltNeighborhood\_centroids
- Traffic Control Points
- Arbanby\_Kittle\_Trail
- Dip Site
- Drop Point
- Fire Station
- Helibase
- Helispot
- Incident Command Post
- Repeater
- Retardant/Mud Pit
- Spot Fire
- Water Source
- Value at Risk
- Division Break
- EC\_AddressPts\_070518
- Uncontrolled Fire Edge
- Completed Line
- Completed Dozer Line
- H-H Completed Hand Line
- R-R Road as Completed Line
- USFS\_Trails
- Primary and Secondary Roads**
- Primary
- Secondary
- Residential
- Service
- High Pressure Gas Line
- XcelTransmissionLines
- Bureau of Land Management
- Private
- State, County, City; Areas
- US Forest Service

G. Torres  
7/26/2018  
2149 hrs

Scale 1:24,000

0 1 2 3 4 5 Miles

0 1000 2000 3000 4000 5000 Feet