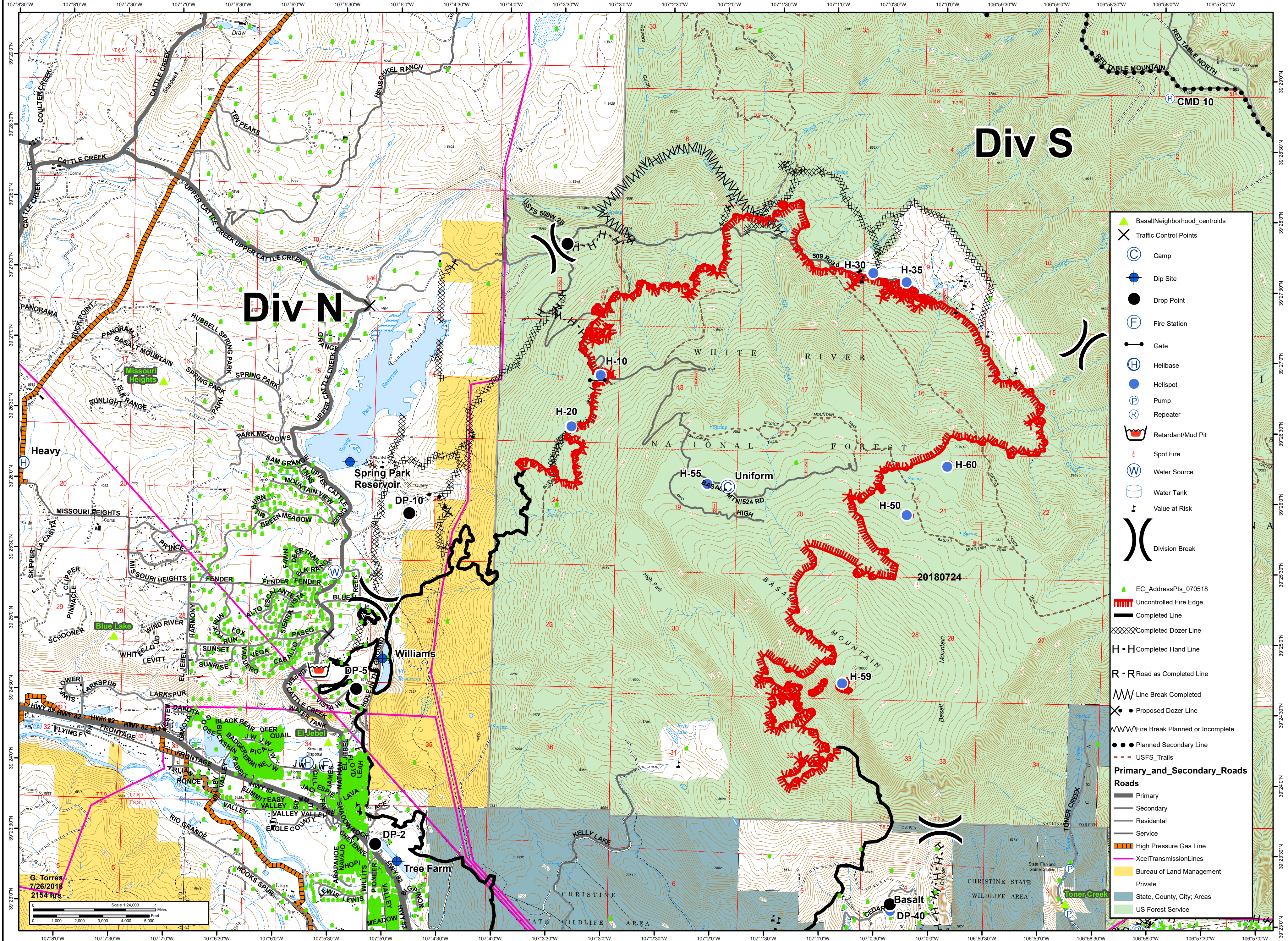




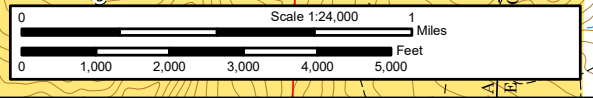
12,186 acres as of  
7/26/2018 1430 hrs

# Lake Christine Div N

July 27, 2018  
CO-EAX-000215



- ▲ BasaltNeighborhood\_centroids
- X Traffic Control Points
- C Camp
- D Dip Site
- Drop Point
- F Fire Station
- Gate
- H Helibase
- Helispot
- P Pump
- R Repeater
- Retardant/Mud Pit
- Spot Fire
- W Water Source
- Water Tank
- Value at Risk
- ) Division Break
- EC\_AddressPts\_070518
- Uncontrolled Fire Edge
- Completed Line
- X Completed Dozer Line
- H-H Completed Hand Line
- R-R Road as Completed Line
- Line Break Completed
- X Proposed Dozer Line
- Fire Break Planned or Incomplete
- Planned Secondary Line
- USFS\_Trails
- Primary\_and\_Secondary\_Roads**
- Primary
- Secondary
- Residential
- Service
- High Pressure Gas Line
- XcelTransmissionLines
- Bureau of Land Management
- Private
- State, County, City; Areas
- US Forest Service



G. Torres  
7/26/2018  
2154 hrs