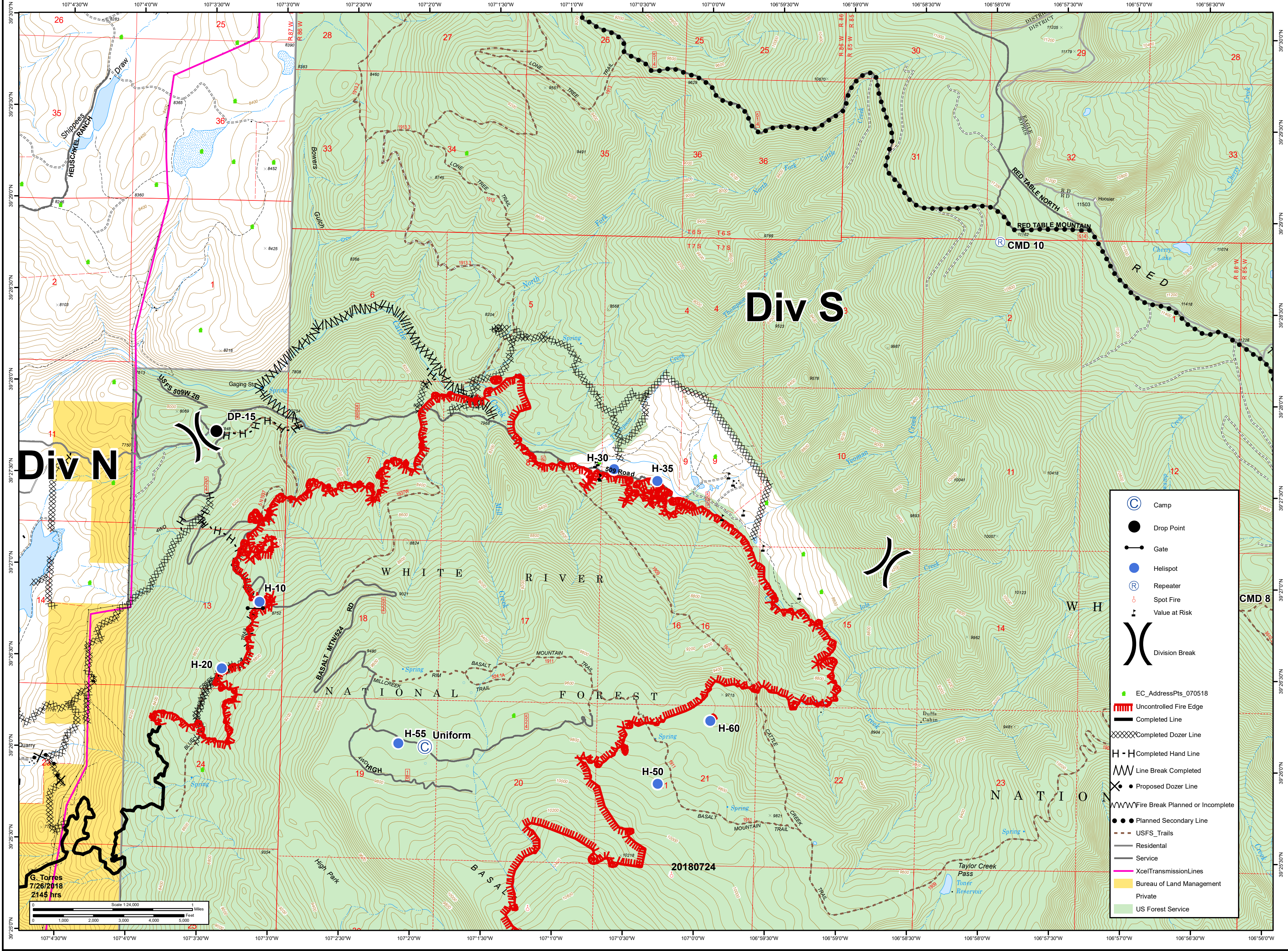




12,186 acres as of
7/26/2018 1430 hrs

Lake Christine Div S

July 27, 2018
CO-EAX-000215



Div N

Div S

G. Torres
7/26/2018
2145 hrs

Scale 1:24,000

0 1 2 3 4 5 Miles

0 1000 2000 3000 4000 5000 Feet

- Camp
- Drop Point
- Gate
- Helispot
- Repeater
- Spot Fire
- Value at Risk
- Division Break
- EC_AddressPts_070518
- Uncontrolled Fire Edge
- Completed Line
- Completed Dozer Line
- Completed Hand Line
- Line Break Completed
- Proposed Dozer Line
- Fire Break Planned or Incomplete
- Planned Secondary Line
- USFS_Trails
- Residential
- Service
- XcelTransmissionLines
- Bureau of Land Management
- Private
- US Forest Service