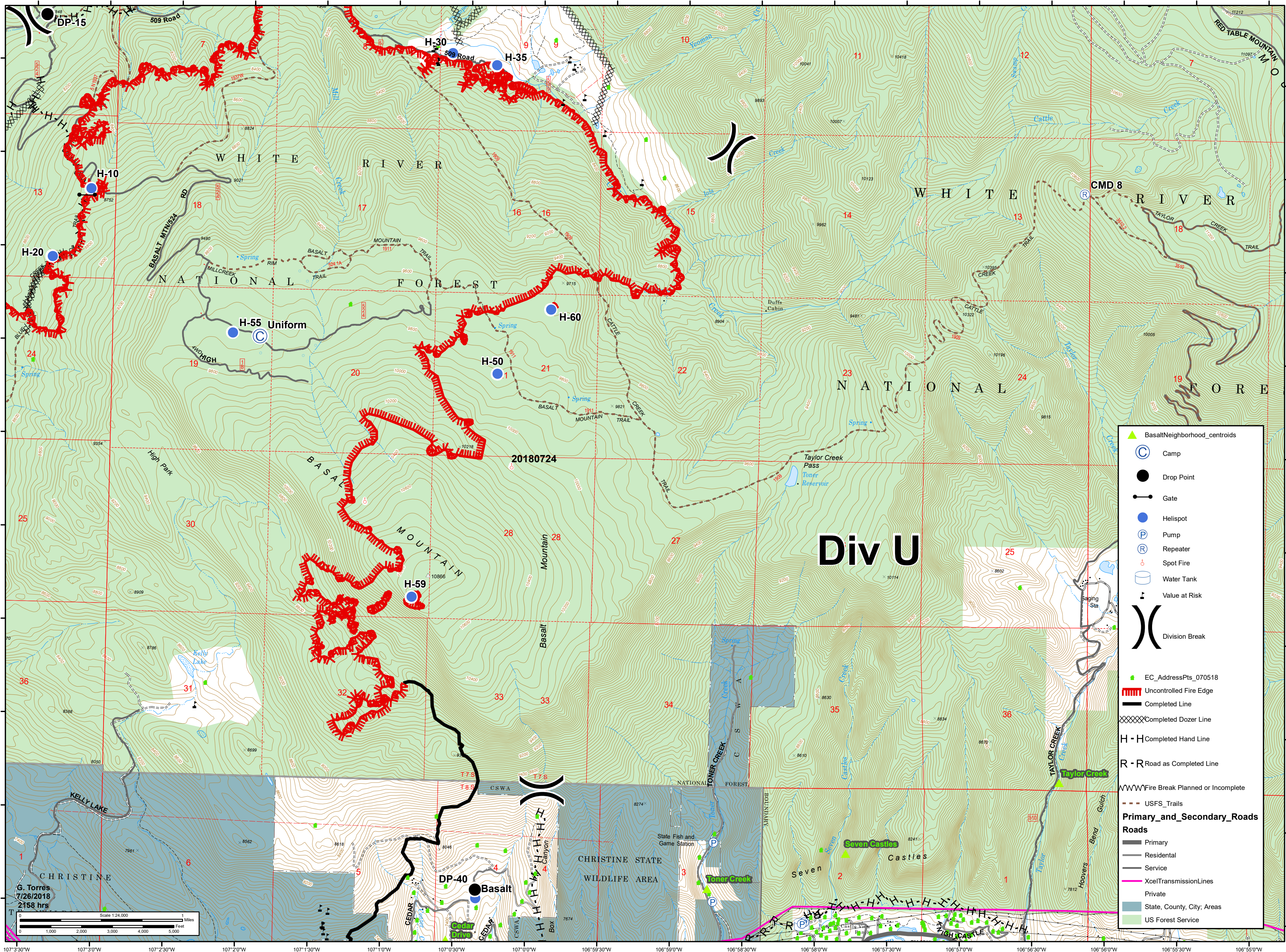




12,186 acres as of
7/26/2018 1430 hrs

Lake Christine Div U

July 27, 2018
CO-EAX-000215



BasaltNeighborhood_centroids

- Camp
- Drop Point
- Gate
- Helispot
- Pump
- Repeater
- Spot Fire
- Water Tank
- Value at Risk
- Division Break
- EC_AddressPts_070518
- Uncontrolled Fire Edge
- Completed Line
- Completed Dozer Line
- Completed Hand Line
- Road as Completed Line
- Fire Break Planned or Incomplete
- USFS_Trails

Primary_and_Secondary_Roads

- Primary
- Residential
- Service
- XcelTransmissionLines
- Private
- State, County, City; Areas
- US Forest Service

G. Torres
7/26/2018
2158 hrs

Scale 1:24,000