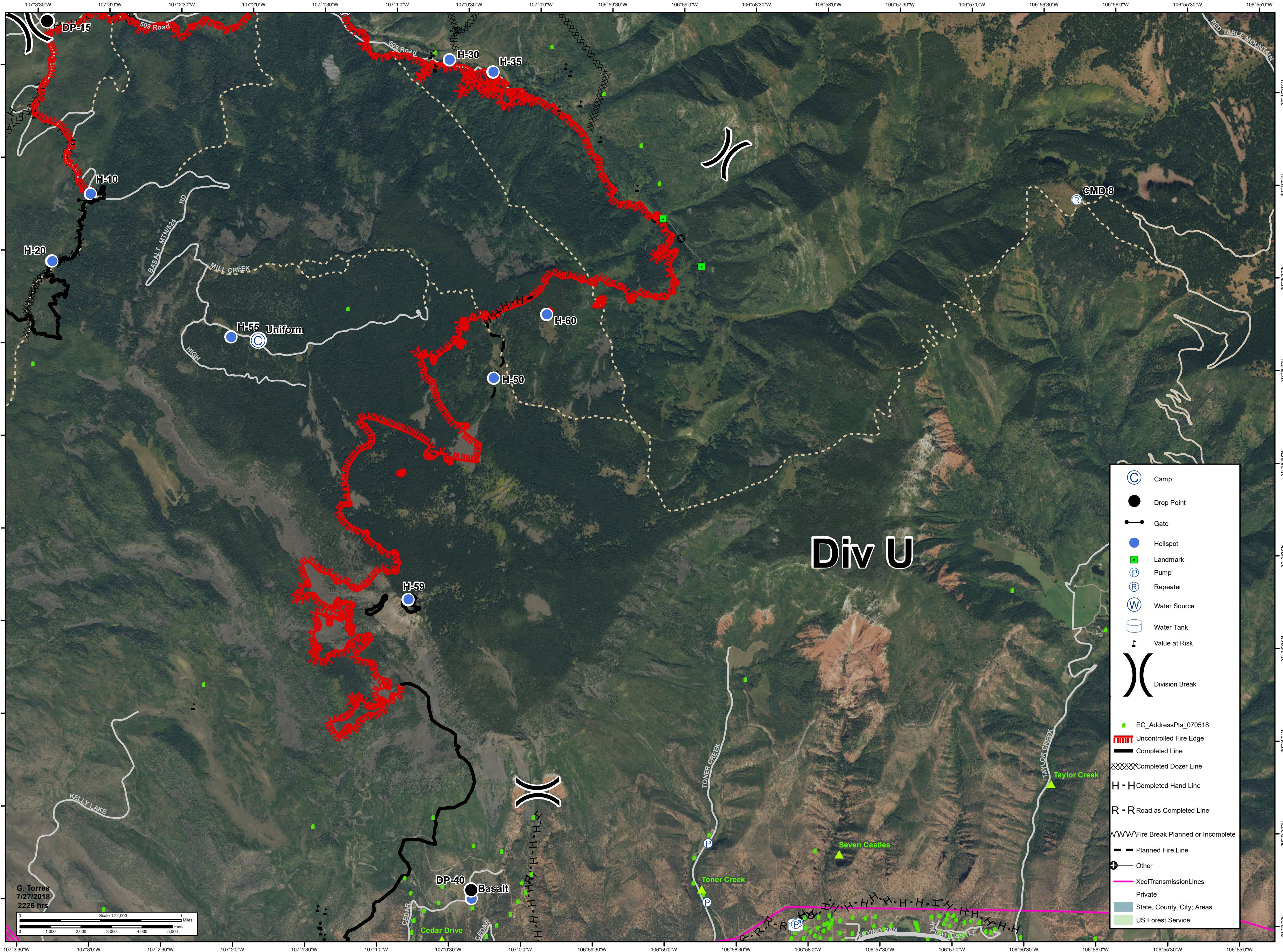




12,186 acres as of  
7/26/2018 1430 hrs

# Lake Christine Div U

July 27, 2018  
CO-EAX-000215



- Camp
- Drop Point
- Gate
- Helispot
- Landmark
- Pump
- Repeater
- Water Source
- Water Tank
- Value at Risk
- Division Break
- EC\_AddressPts\_070518
- Uncontrolled Fire Edge
- Completed Line
- Completed Dozer Line
- Completed Hand Line
- Road as Completed Line
- Fire Break Planned or Incomplete
- Planned Fire Line
- Other
- Xcel Transmission Lines
- Private
- State, County, City; Areas
- US Forest Service

G. Torres  
7/27/2018  
2226 hrs

Scale 1:24,000

0 1,000 2,000 3,000 4,000 5,000 Feet