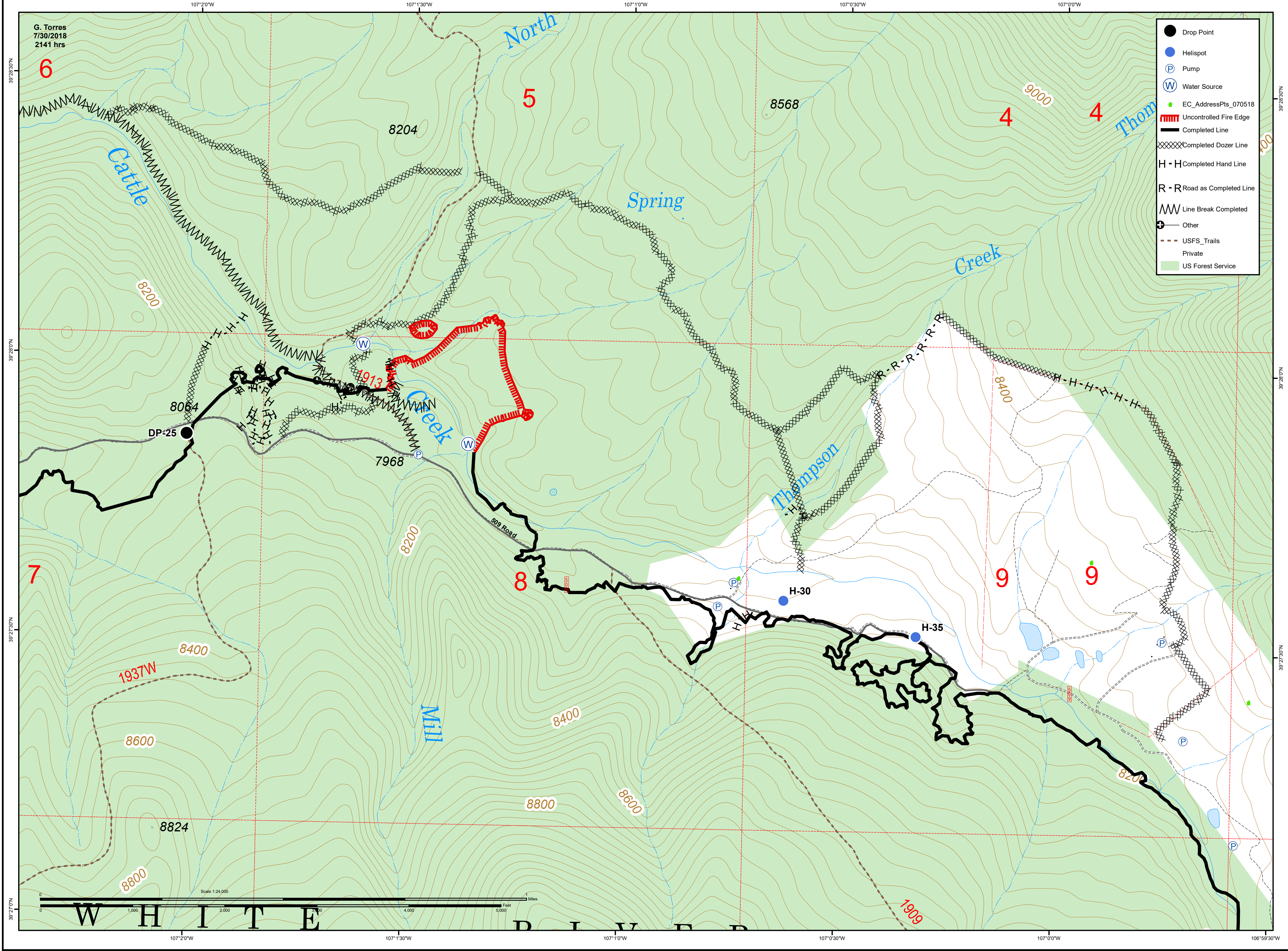




12,588 acres as of  
7/27/2018 2145 hrs

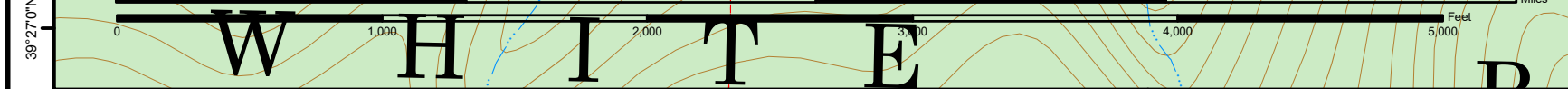
# Lake Christine Div S Operational Map

July 31, 2018  
CO-EAX-000215



G. Torres  
7/30/2018  
2141 hrs

- Drop Point
- Helispot
- Ⓟ Pump
- Ⓜ Water Source
- EC\_AddressPts\_070518
- Uncontrolled Fire Edge
- Completed Line
- Completed Dozer Line
- H-H Completed Hand Line
- R-R Road as Completed Line
- Line Break Completed
- Other
- USFS\_Trails
- Private
- US Forest Service



W H I T E R I V E R