





Lake Christine
CO-EAX-000215
IR Imagery Flown:
July 12, 2018
@ 2358 MDT
Calculated Acres: 6,668

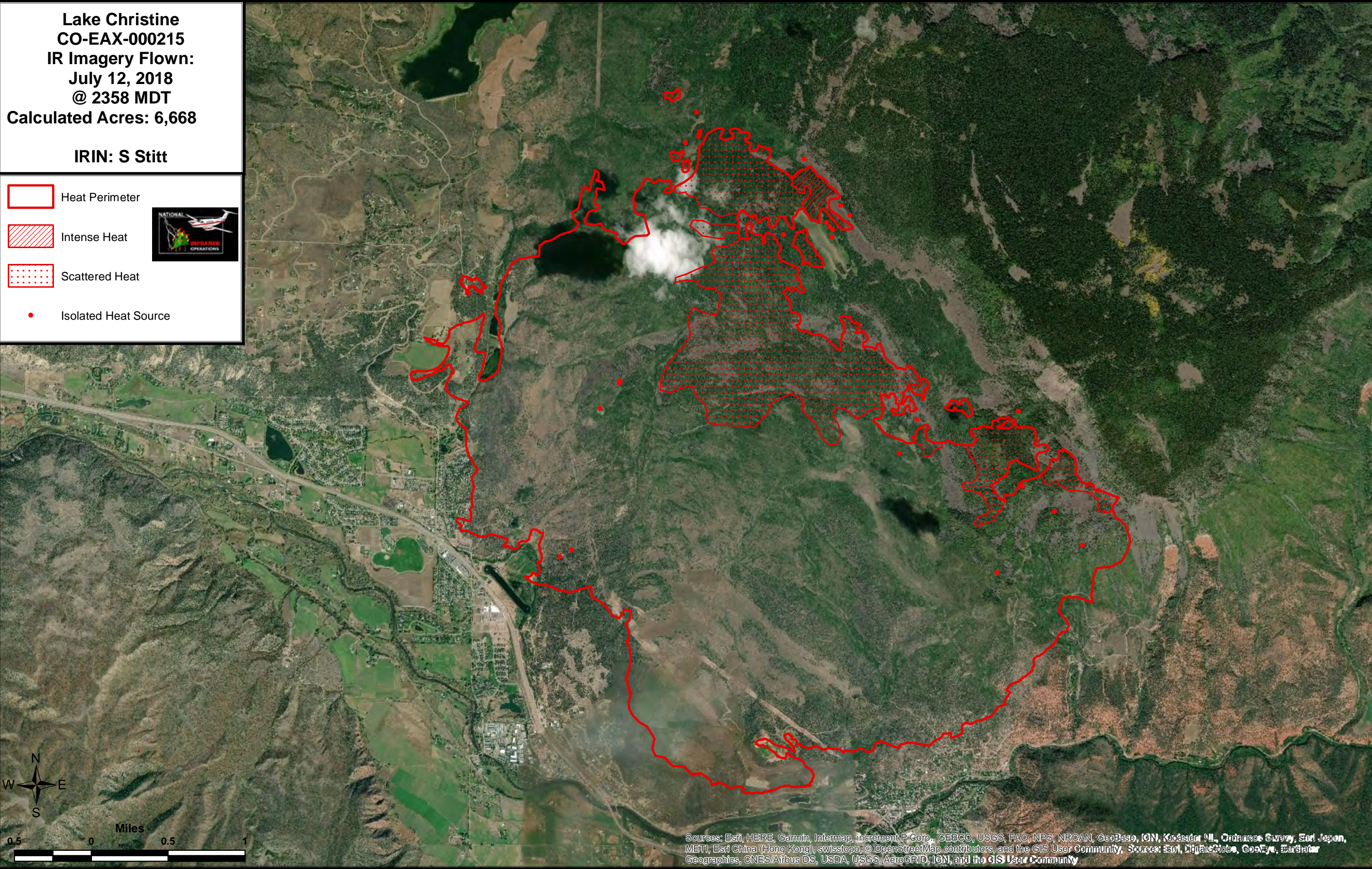

IRIN: S Stitt

 Heat Perimeter

 Intense Heat

 Scattered Heat

 Isolated Heat Source



Sources: Esri, HERE, Garmin, Intermap, increment P Corp., GEBCO, USGS, FAO, NPS, NRCAN, GeoBase, IGN, Kadaster NL, Ordnance Survey, Esri Japan, METI, Esri China (Hong Kong), swisstopo, © OpenStreetMap contributors, and the GIS User Community, Sources: Esri, DigitalGlobe, GeoEye, Earthstar Geographics, CNES/Airbus DS, USDA, USGS, AeroGRID, IGN, and the GIS User Community