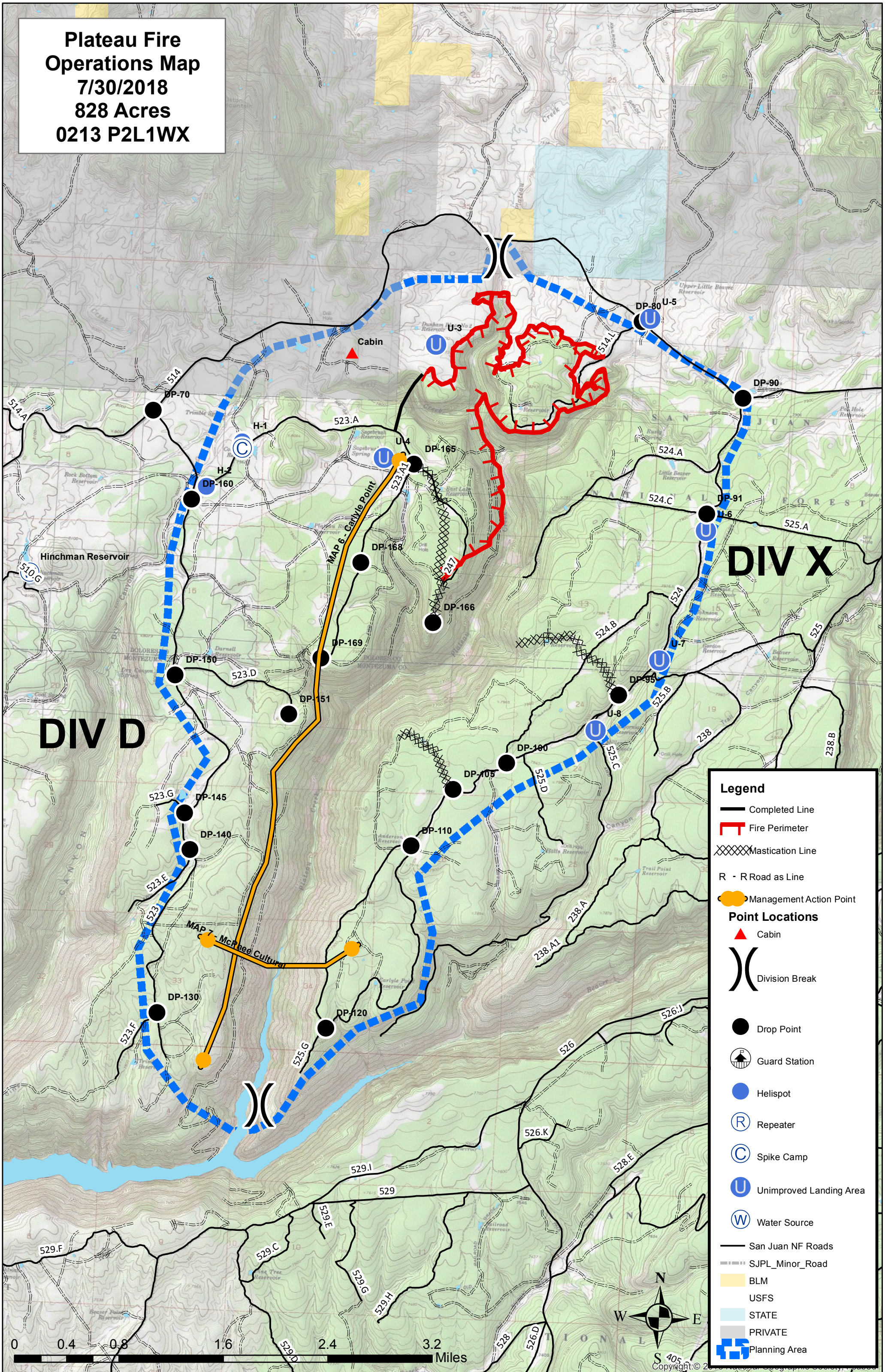


**Plateau Fire
Operations Map
7/30/2018
828 Acres
0213 P2L1WX**



Legend

- Completed Line
- Fire Perimeter
- Mastication Line
- R - R Road as Line
- Management Action Point
- Point Locations**
- Cabin
- Division Break
- Drop Point
- Guard Station
- Helispot
- Repeater
- Spike Camp
- Unimproved Landing Area
- Water Source
- San Juan NF Roads
- SJPL_Minor_Road
- BLM
- USFS
- STATE
- PRIVATE
- Planning Area

