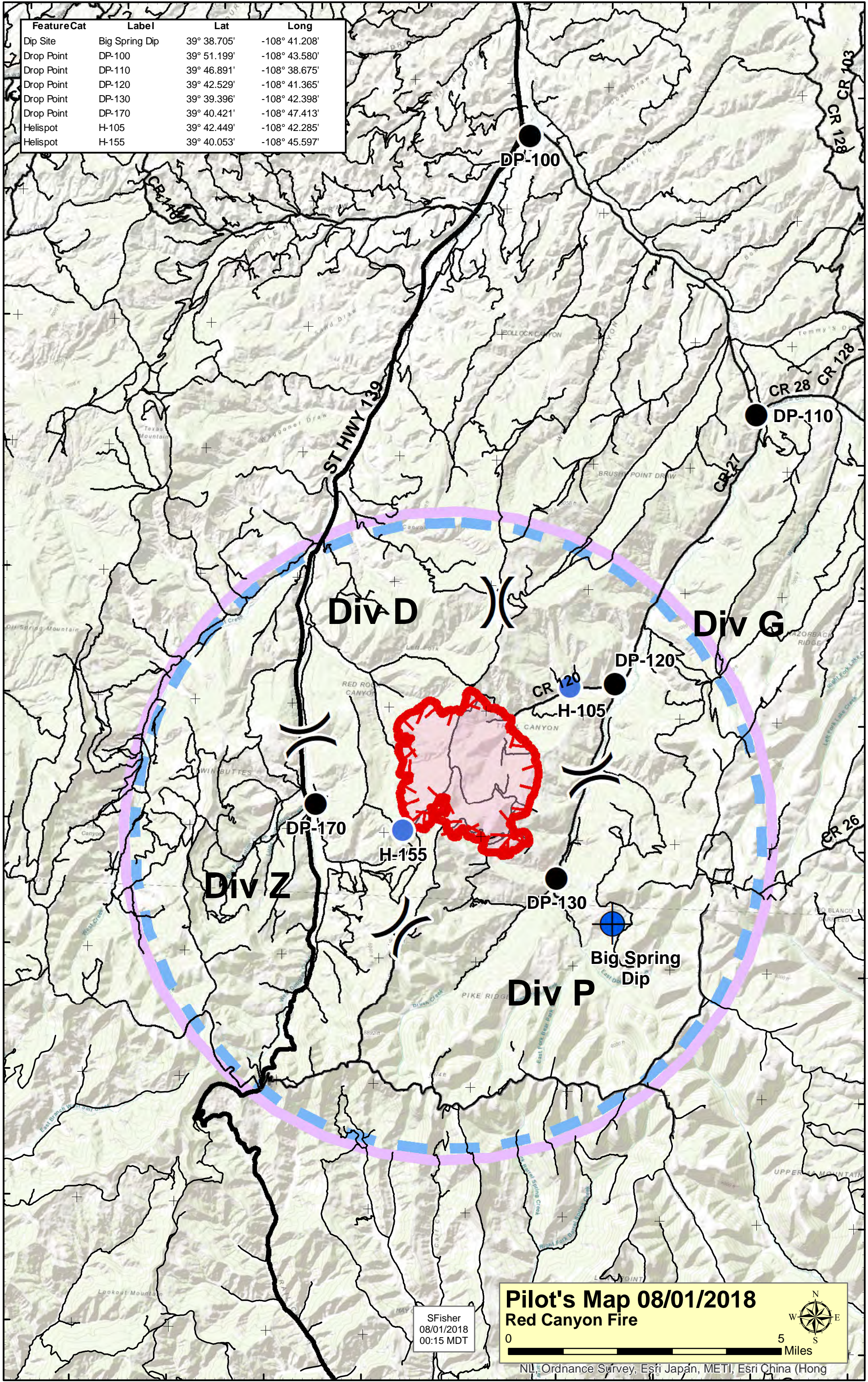


108°54'0"W 108°52'0"W 108°50'0"W 108°48'0"W 108°46'0"W 108°44'0"W 108°42'0"W 108°40'0"W 108°38'0"W

FeatureCat	Label	Lat	Long
Dip Site	Big Spring Dip	39° 38.705'	-108° 41.208'
Drop Point	DP-100	39° 51.199'	-108° 43.580'
Drop Point	DP-110	39° 46.891'	-108° 38.675'
Drop Point	DP-120	39° 42.529'	-108° 41.365'
Drop Point	DP-130	39° 39.396'	-108° 42.398'
Drop Point	DP-170	39° 40.421'	-108° 47.413'
Helispot	H-105	39° 42.449'	-108° 42.285'
Helispot	H-155	39° 40.053'	-108° 45.597'

39°52'0"N  
39°50'0"N  
39°48'0"N  
39°46'0"N  
39°44'0"N  
39°42'0"N  
39°40'0"N  
39°38'0"N  
39°36'0"N  
39°34'0"N  
39°32'0"N

39°52'0"N  
39°50'0"N  
39°48'0"N  
39°46'0"N  
39°44'0"N  
39°42'0"N  
39°40'0"N  
39°38'0"N  
39°36'0"N  
39°34'0"N  
39°32'0"N



**Pilot's Map 08/01/2018**  
**Red Canyon Fire**

0 5 Miles

SFisher  
08/01/2018  
00:15 MDT

NL, Ordnance Survey, Esri Japan, METI, Esri China (Hong

108°52'0"W 108°50'0"W 108°48'0"W 108°46'0"W 108°44'0"W 108°42'0"W 108°40'0"W 108°38'0"W 108°36'0"W