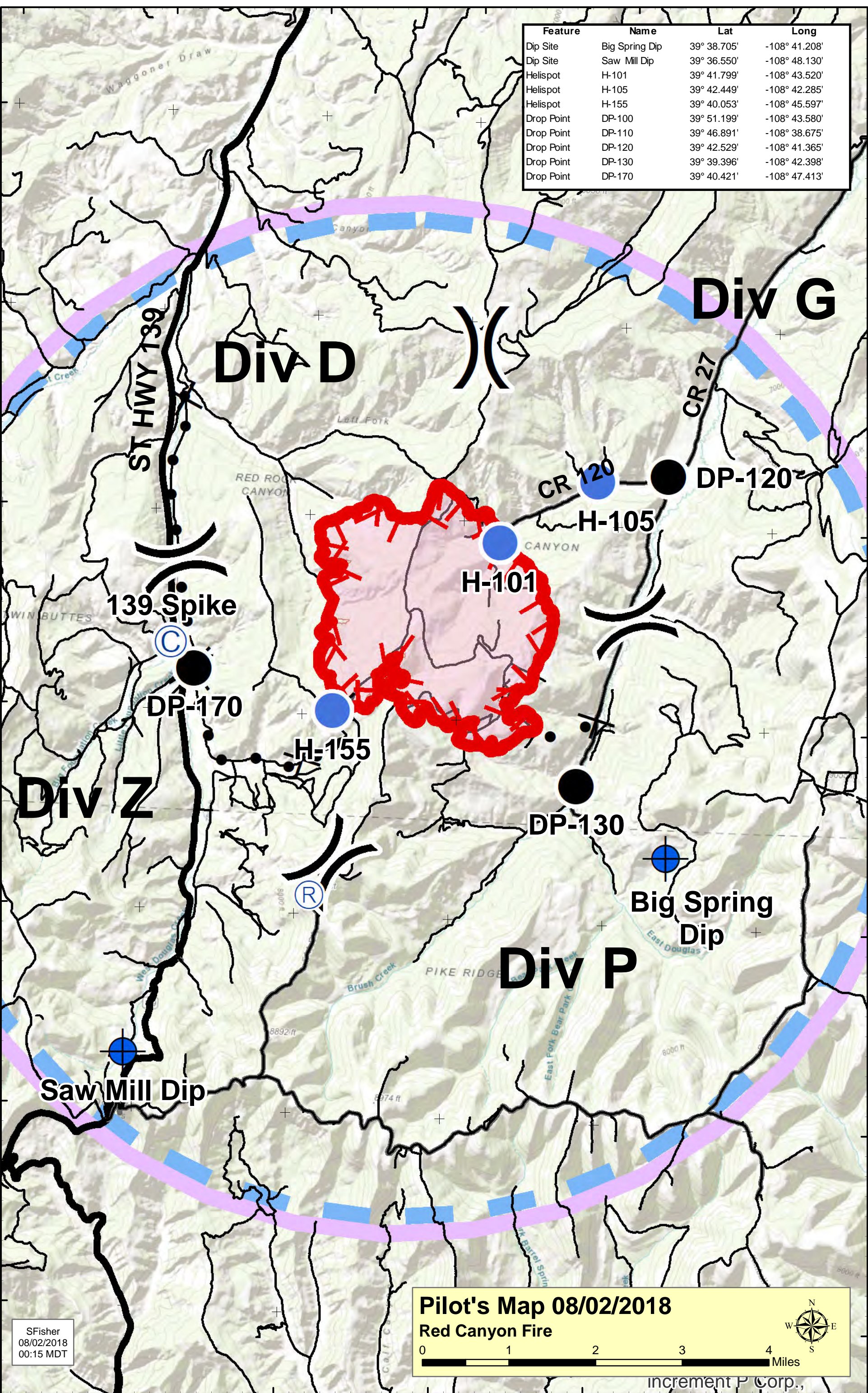


108°50'0"W 108°48'0"W 108°46'0"W 108°44'0"W 108°42'0"W 108°40'0"W

Feature	Name	Lat	Long
Dip Site	Big Spring Dip	39° 38.705'	-108° 41.208'
Dip Site	Saw Mill Dip	39° 36.550'	-108° 48.130'
Helispot	H-101	39° 41.799'	-108° 43.520'
Helispot	H-105	39° 42.449'	-108° 42.285'
Helispot	H-155	39° 40.053'	-108° 45.597'
Drop Point	DP-100	39° 51.199'	-108° 43.580'
Drop Point	DP-110	39° 46.891'	-108° 38.675'
Drop Point	DP-120	39° 42.529'	-108° 41.365'
Drop Point	DP-130	39° 39.396'	-108° 42.398'
Drop Point	DP-170	39° 40.421'	-108° 47.413'



SFisher  
08/02/2018  
00:15 MDT

**Pilot's Map 08/02/2018**  
**Red Canyon Fire**

0 1 2 3 4 Miles

increment P Corp.,