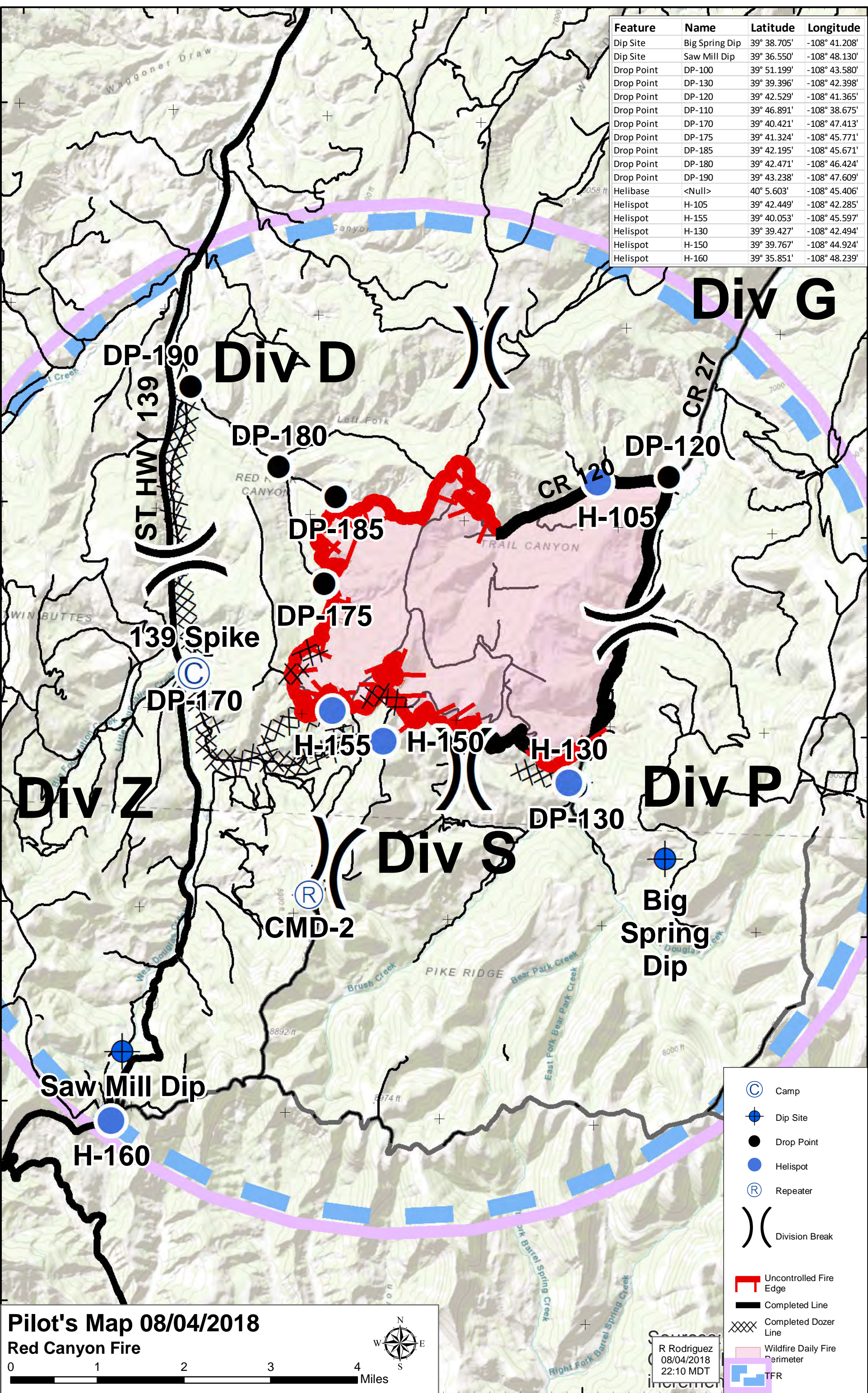
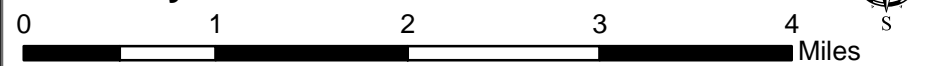


Feature	Name	Latitude	Longitude
Dip Site	Big Spring Dip	39° 38.705'	-108° 41.208'
Dip Site	Saw Mill Dip	39° 36.550'	-108° 48.130'
Drop Point	DP-100	39° 51.199'	-108° 43.580'
Drop Point	DP-130	39° 39.396'	-108° 42.398'
Drop Point	DP-120	39° 42.529'	-108° 41.365'
Drop Point	DP-110	39° 46.891'	-108° 38.675'
Drop Point	DP-170	39° 40.421'	-108° 47.413'
Drop Point	DP-175	39° 41.324'	-108° 45.771'
Drop Point	DP-185	39° 42.195'	-108° 45.671'
Drop Point	DP-180	39° 42.471'	-108° 46.424'
Drop Point	DP-190	39° 43.238'	-108° 47.609'
Helibase	<Null>	40° 5.603'	-108° 45.406'
Helispot	H-105	39° 42.449'	-108° 42.285'
Helispot	H-155	39° 40.053'	-108° 45.597'
Helispot	H-130	39° 39.427'	-108° 42.494'
Helispot	H-150	39° 39.767'	-108° 44.924'
Helispot	H-160	39° 35.851'	-108° 48.239'



Pilot's Map 08/04/2018
Red Canyon Fire



R Rodriguez
 08/04/2018
 22:10 MDT