

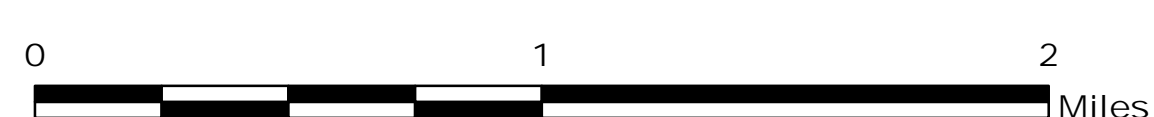
# RYAN FIRE Situation Map

WY-MRF-000598

Sept. 18, 2018

Day Shift

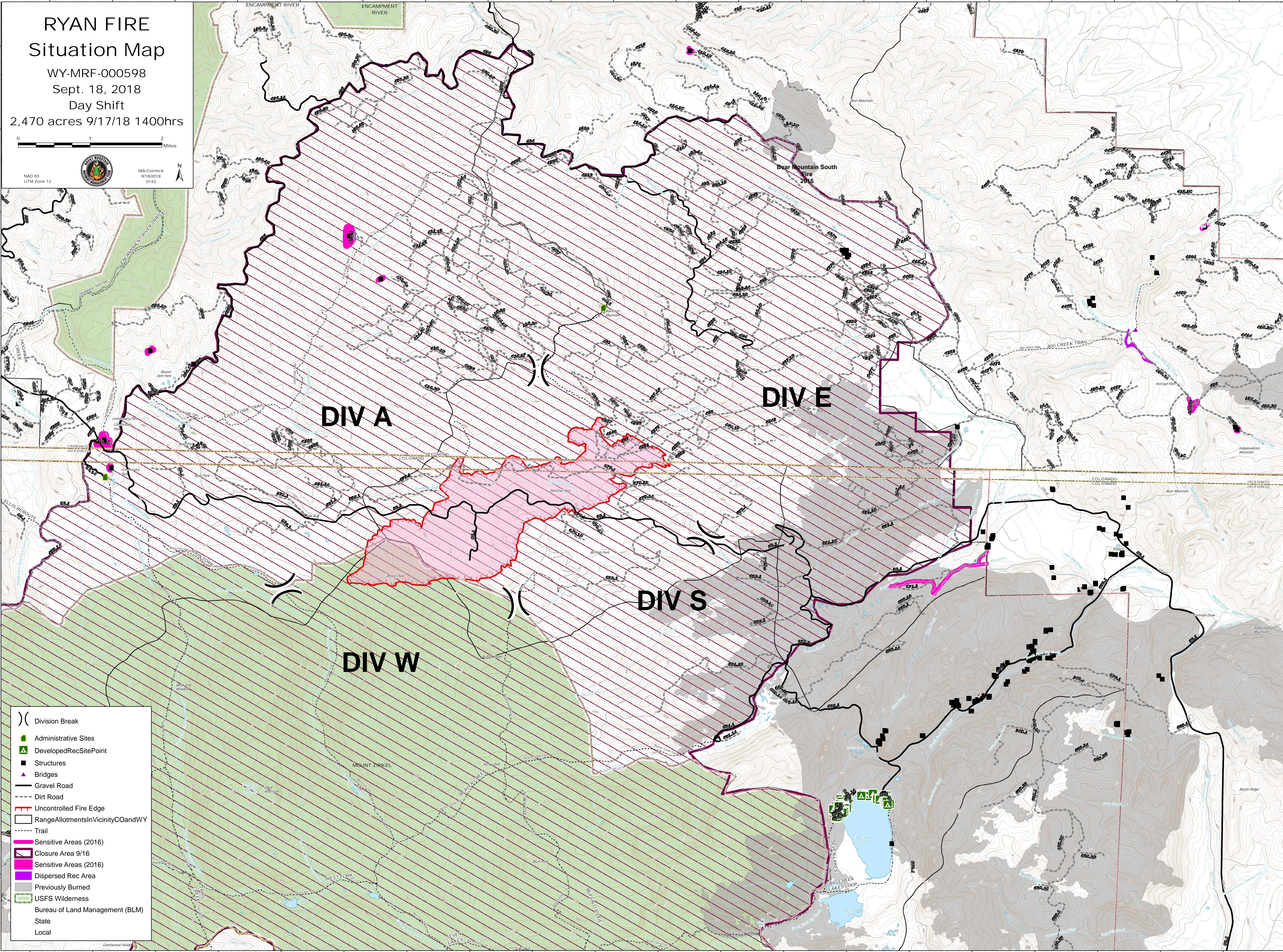
2,470 acres 9/17/18 1400hrs



SMcCormick  
9/18/2018  
0143



NAD 83  
UTM Zone 12



**DIV A**

**DIV E**

**DIV S**

**DIV W**

- )) Division Break
- Administrative Sites
- Developed Rec Site Point
- Structures
- Bridges
- Gravel Road
- Dirt Road
- Uncontrolled Fire Edge
- Range Allotments in Vicinity CO and WY
- Trail
- Sensitive Areas (2016)
- Closure Area 9/16
- Sensitive Areas (2016)
- Dispersed Rec Area
- Previously Burned
- USFS Wilderness
- Bureau of Land Management (BLM)
- State
- Local