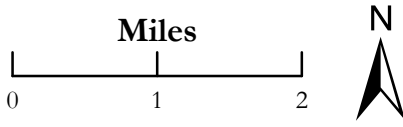


RYAN FIRE Pilot Map

WY-MRF-000598
 Sept. 19, 2018
 Day Shift
 2,512 acres 9/18/18 1400hrs

Legend

-  Aerial Hazard
-  Aerial Hazard
-  Uncontrolled Fire Edge
-  Drop Point
-  Division Break
-  TFR 9/17
-  Wilderness
- Road Type**
-  Gravel Road, Suitable for Passenger Car
-  Gravel Road, Moderate Comfort Level
-  Highway

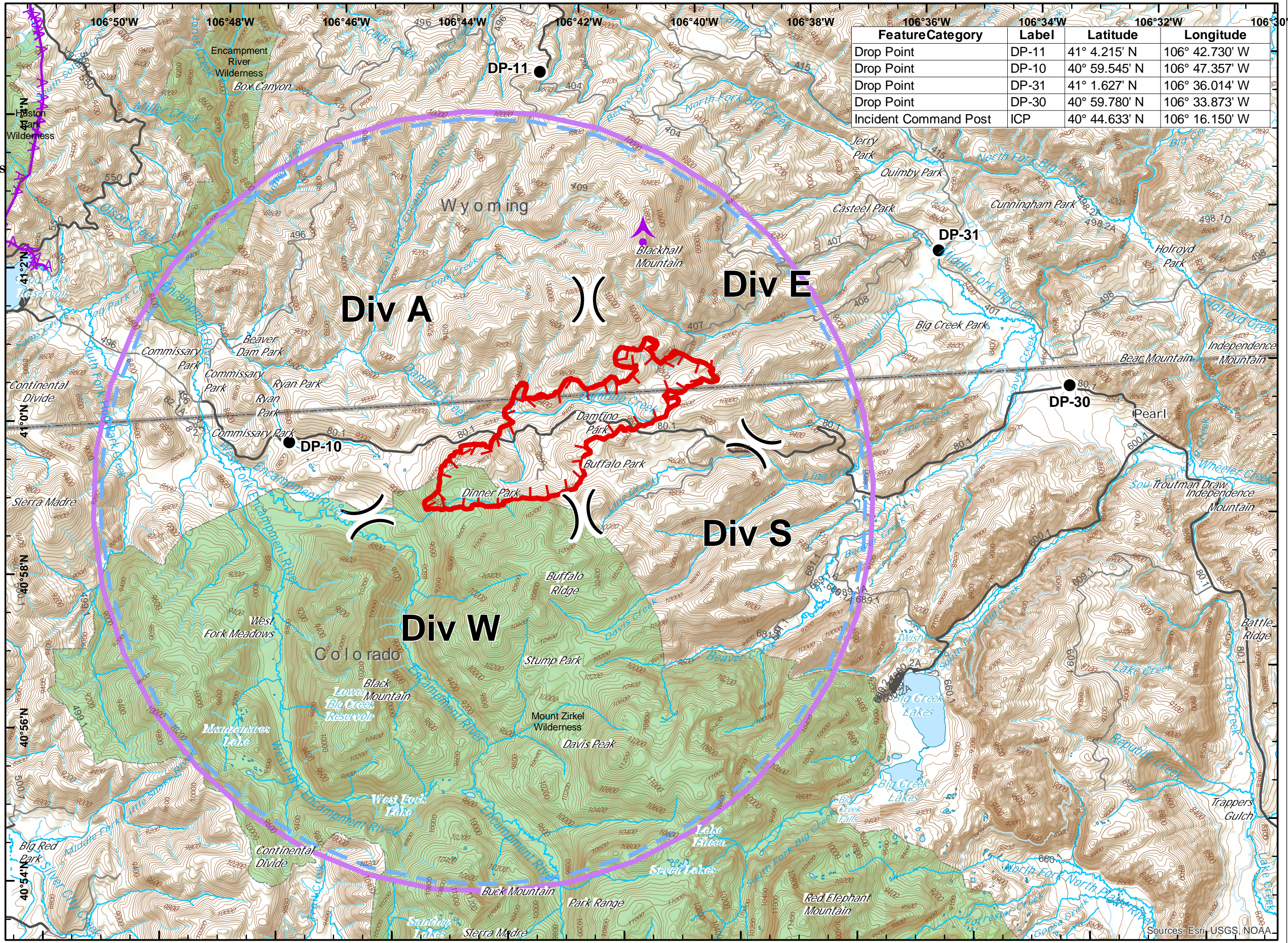


NAD 83
 UTM Zone 12



SMcCormick
 9/18/2018
 2218

Feature Category	Label	Latitude	Longitude
Drop Point	DP-11	41° 4.215' N	106° 42.730' W
Drop Point	DP-10	40° 59.545' N	106° 47.357' W
Drop Point	DP-31	41° 1.627' N	106° 36.014' W
Drop Point	DP-30	40° 59.780' N	106° 33.873' W
Incident Command Post	ICP	40° 44.633' N	106° 16.150' W



Sources: Esri, USGS, NOAA