

# RYAN FIRE Air Operations Map

WY-MRF-000598  
Sept. 23, 2018  
Day Shift  
8,685 acres 9/22/18 1930hrs

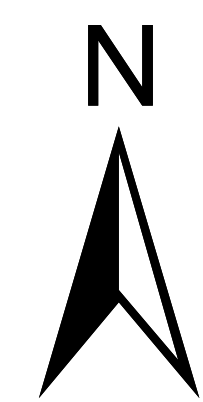
## Legend

- Aerial Hazard Point
- Aerial Hazard Line
- Dip Site
- Drop Point
- Gate
- Helibase
- Helispot
- Incident Command Post
- Repeater
- Water Source
- Division Break
- Uncontrolled Fire Edge
- TFR 8/6367 9-20-18
- Wildfire Perimeter
- Wilderness

## Roads

- High Clearance Route Identified For Use
- Gravel Road, Suitable for Passenger Car
- Gravel Road, Moderate Comfort Level
- Highway

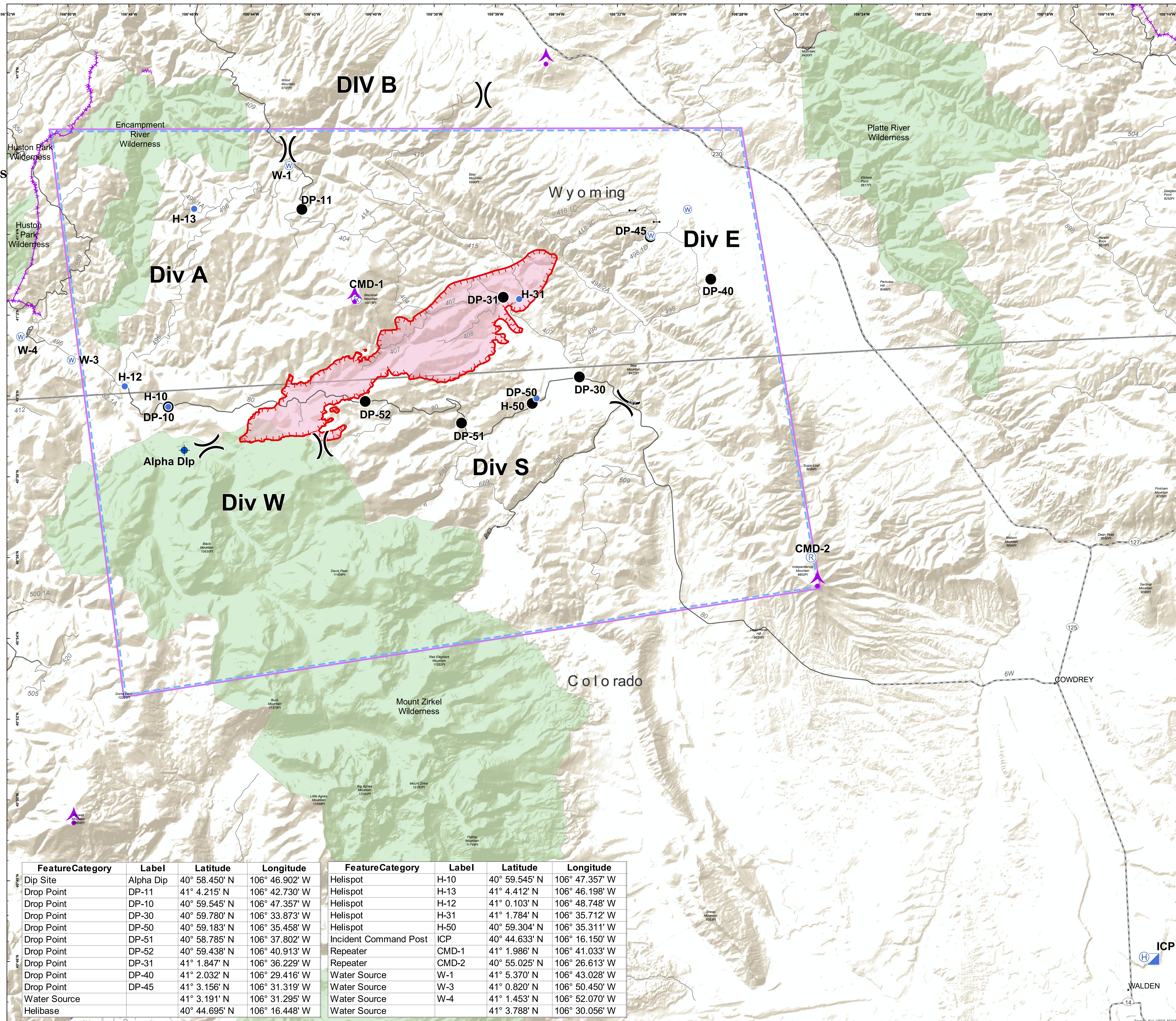
Miles  
0 1 2



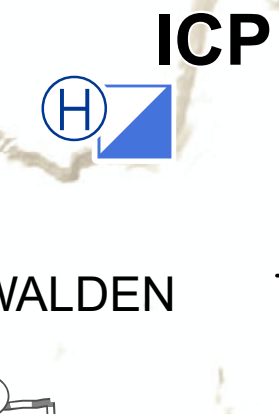
NAD 83  
UTM Zone 12



SMcCormick  
9/22/2018  
2325



FeatureCategory	Label	Latitude	Longitude	FeatureCategory	Label	Latitude	Longitude
Dip Site	Alpha Dip	40° 58.450' N	106° 46.902' W	Helispot	H-10	40° 59.545' N	106° 47.357' W
Drop Point	DP-11	41° 4.215' N	106° 42.730' W	Helispot	H-13	41° 4.412' N	106° 46.198' W
Drop Point	DP-10	40° 59.545' N	106° 47.357' W	Helispot	H-12	41° 0.103' N	106° 48.748' W
Drop Point	DP-30	40° 59.780' N	106° 33.873' W	Helispot	H-31	41° 1.784' N	106° 35.712' W
Drop Point	DP-50	40° 59.183' N	106° 35.458' W	Helispot	H-50	40° 59.304' N	106° 35.311' W
Drop Point	DP-51	40° 58.785' N	106° 37.802' W	Incident Command Post	ICP	40° 44.633' N	106° 16.150' W
Drop Point	DP-52	40° 59.438' N	106° 40.913' W	Repeater	CMD-1	41° 1.986' N	106° 41.033' W
Drop Point	DP-31	41° 1.847' N	106° 36.229' W	Repeater	CMD-2	40° 55.025' N	106° 26.613' W
Drop Point	DP-40	41° 2.032' N	106° 29.416' W	Water Source	W-1	41° 5.370' N	106° 43.028' W
Drop Point	DP-45	41° 3.156' N	106° 31.319' W	Water Source	W-3	41° 0.820' N	106° 50.450' W
Water Source		41° 3.191' N	106° 31.295' W	Water Source	W-4	41° 1.453' N	106° 52.070' W
Helibase		40° 44.695' N	106° 16.448' W	Water Source		41° 3.788' N	106° 30.056' W



WALDEN