

# RYAN FIRE Air Operations Map

WY-MRF-000598

Sept. 24, 2018

Day Shift

19,328 acres 9/23/18 1930hrs

## Legend

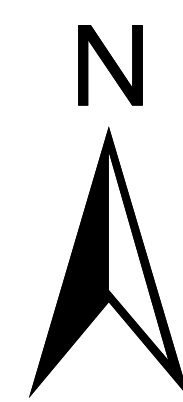
- Aerial Hazard Point
- Aerial Hazard Line
- Dip Site
- Drop Point
- Gate
- Helibase
- Helispot
- Incident Command Post
- Repeater
- Spot Fire
- Water Source
- Division Break
- Uncontrolled Fire Edge
- TFR 8/7064 9-23-18
- Wildfire Perimeter
- Wilderness

## Roads

- High Clearance Route Identified For Use
- Gravel Road, Suitable for Passenger Car
- Gravel Road, Moderate Comfort Level
- Highway

Miles

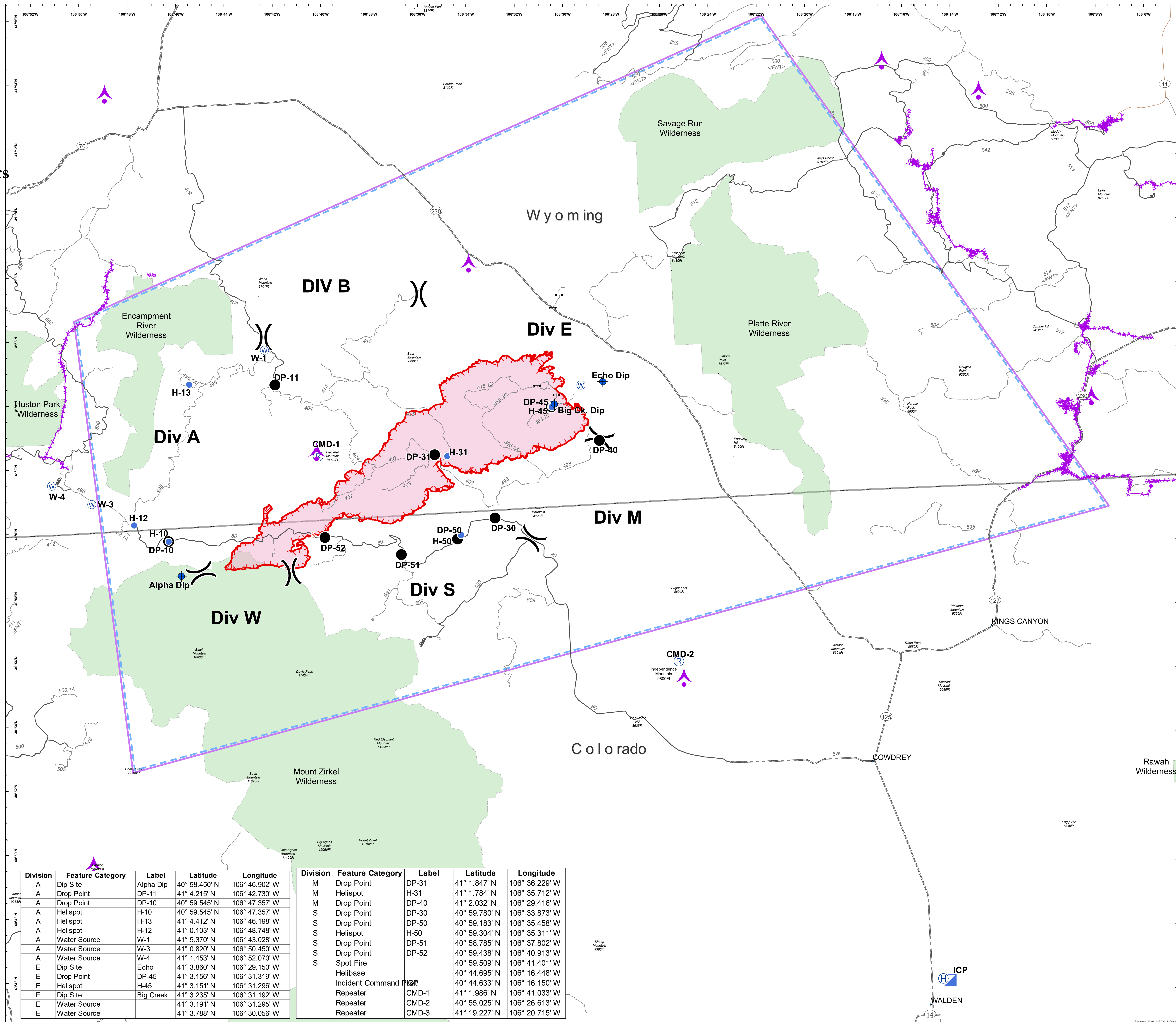
0 1 2



NAD 83  
UTM Zone 12



SMcCormick  
9/23/2018  
2259



Division	Feature Category	Label	Latitude	Longitude	Division	Feature Category	Label	Latitude	Longitude
A	Dip Site	Alpha Dip	40° 58.450' N	106° 46.902' W	M	Drop Point	DP-31	41° 1.847' N	106° 36.229' W
A	Drop Point	DP-11	41° 4.215' N	106° 42.730' W	M	Helispot	H-31	41° 1.784' N	106° 35.712' W
A	Drop Point	DP-10	40° 59.545' N	106° 47.357' W	M	Drop Point	DP-40	41° 2.032' N	106° 29.416' W
A	Helispot	H-10	40° 59.545' N	106° 47.357' W	S	Drop Point	DP-30	40° 59.780' N	106° 33.873' W
A	Helispot	H-13	41° 4.412' N	106° 46.198' W	S	Drop Point	DP-50	40° 59.183' N	106° 35.458' W
A	Helispot	H-12	41° 0.103' N	106° 48.748' W	S	Helispot	H-50	40° 59.304' N	106° 35.311' W
A	Water Source	W-1	41° 5.370' N	106° 43.028' W	S	Drop Point	DP-51	40° 58.785' N	106° 37.802' W
A	Water Source	W-3	41° 0.820' N	106° 50.450' W	S	Drop Point	DP-52	40° 59.438' N	106° 40.913' W
A	Water Source	W-4	41° 1.453' N	106° 52.070' W	S	Spot Fire		40° 59.509' N	106° 41.401' W
E	Dip Site	Echo	41° 3.860' N	106° 29.150' W		Helibase		40° 44.695' N	106° 16.448' W
E	Drop Point	DP-45	41° 3.156' N	106° 31.319' W		Incident Command Post	ICP	40° 44.633' N	106° 16.150' W
E	Helispot	H-45	41° 3.151' N	106° 31.296' W		Repeater	CMD-1	41° 1.986' N	106° 41.033' W
E	Dip Site	Big Creek	41° 3.235' N	106° 31.192' W		Repeater	CMD-2	40° 55.025' N	106° 26.613' W
E	Water Source		41° 3.191' N	106° 31.295' W		Repeater	CMD-3	41° 19.227' N	106° 20.715' W
E	Water Source		41° 3.788' N	106° 30.056' W					

Source: Esri, USGS, NOAA