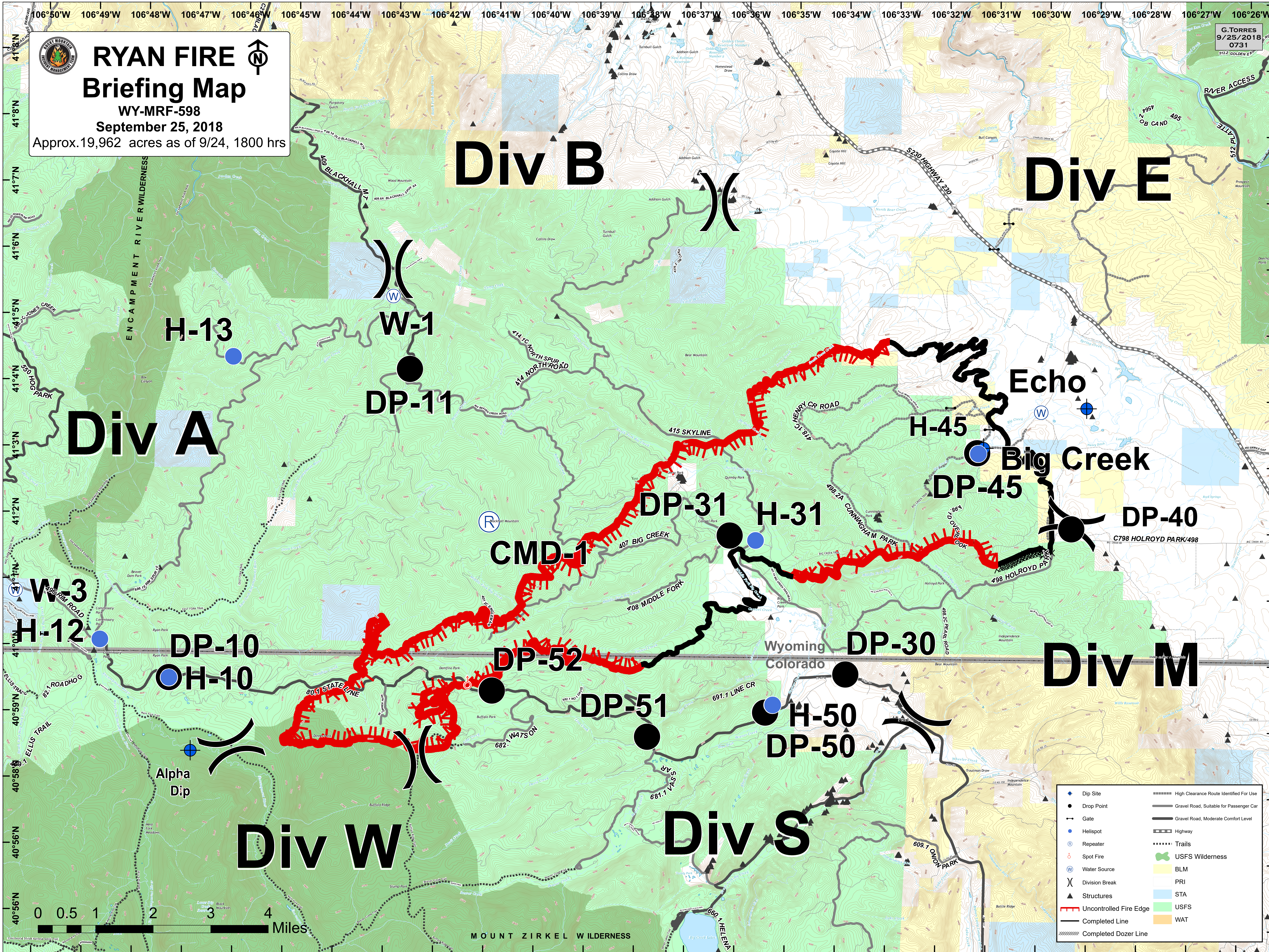


**RYAN FIRE**  
**Briefing Map**  
 WY-MRF-598  
 September 25, 2018  
 Approx. 19,962 acres as of 9/24, 1800 hrs

G. TORRES  
 9/25/2018  
 0731



	Dip Site		High Clearance Route Identified For Use
	Drop Point		Gravel Road, Suitable for Passenger Car
	Gate		Gravel Road, Moderate Comfort Level
	Helispot		Highway
	Repeater		Trails
	Spot Fire		USFS Wilderness
	Water Source		BLM
	Division Break		PRI
	Structures		STA
	Uncontrolled Fire Edge		USFS
	Completed Line		WAT
	Completed Dozer Line		

MOUNT ZIRKEL WILDERNESS