

RYAN FIRE Pilot Map

WY-MRF-000598
Sept. 26, 2018
Day Shift

21,032 acres
as of 9/25/18 1800hrs

Legend

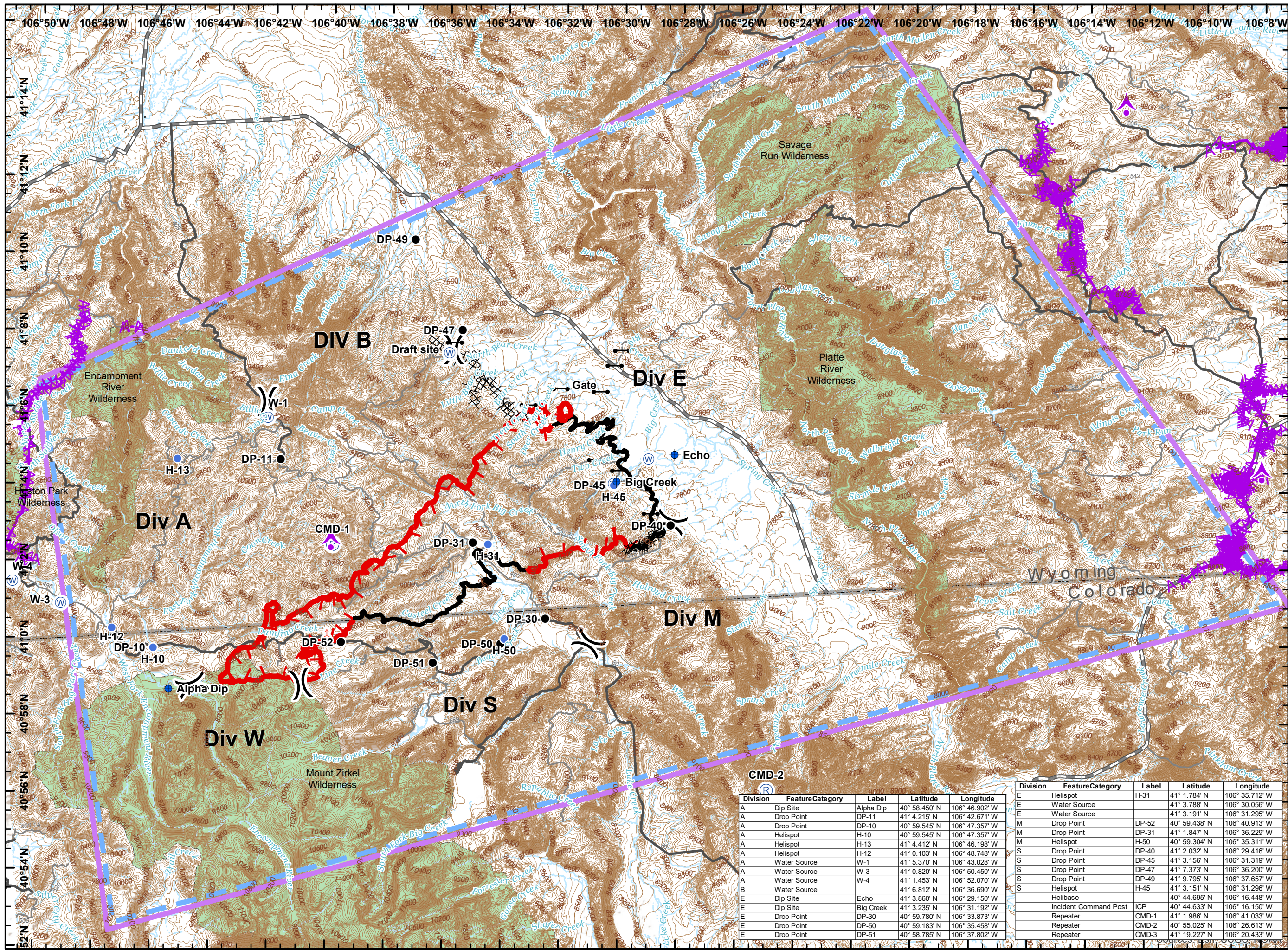
- Aerial Hazard
 - Aerial Hazard
 - Uncontrolled Fire Edge
 - Completed Line
 - Completed Dozer Line
 - Other
 - Dip Site
 - Drop Point
 - Gate
 - Helispot
 - Repeater
 - Spot Fire
 - Water Source
 - Division Break
 - TFR 8/7064 9-23-18
 - Wilderness
- ### Roads
- High Clearance Route Identified For Use
 - Gravel Road, Suitable for Passenger Car
 - Gravel Road, Moderate Comfort Level
 - Highway

Miles
0 1 2

NAD 83
UTM Zone 12



SMcCormick
9/25/2018
2310



Division	FeatureCategory	Label	Latitude	Longitude
A	Dip Site	Alpha Dip	40° 58.450' N	106° 46.902' W
E	Water Source	H-31	41° 3.788' N	106° 30.056' W
A	Drop Point	DP-11	41° 4.215' N	106° 42.671' W
A	Drop Point	DP-10	40° 59.545' N	106° 47.357' W
A	Helispot	H-10	40° 59.545' N	106° 47.357' W
A	Helispot	H-13	41° 4.412' N	106° 46.198' W
A	Helispot	H-12	41° 0.103' N	106° 48.748' W
A	Water Source	W-1	41° 5.370' N	106° 43.028' W
A	Water Source	W-3	41° 0.820' N	106° 50.450' W
A	Water Source	W-4	41° 1.453' N	106° 52.070' W
B	Water Source	Echo	41° 6.812' N	106° 36.690' W
E	Dip Site	Echo	41° 3.860' N	106° 29.150' W
E	Dip Site	Big Creek	41° 3.235' N	106° 31.192' W
E	Drop Point	DP-30	40° 59.780' N	106° 33.873' W
E	Drop Point	DP-50	40° 59.183' N	106° 35.458' W
E	Drop Point	DP-51	40° 58.785' N	106° 37.802' W

Division	FeatureCategory	Label	Latitude	Longitude
E	Helibase	H-31	41° 1.784' N	106° 35.712' W
E	Water Source	H-31	41° 3.788' N	106° 30.056' W
E	Water Source	H-31	41° 3.191' N	106° 31.295' W
M	Drop Point	DP-52	40° 59.438' N	106° 40.913' W
M	Drop Point	DP-31	41° 1.847' N	106° 36.229' W
M	Helispot	H-50	40° 59.304' N	106° 35.311' W
S	Drop Point	DP-40	41° 2.032' N	106° 29.416' W
S	Drop Point	DP-45	41° 3.156' N	106° 31.319' W
S	Drop Point	DP-47	41° 7.373' N	106° 36.200' W
S	Drop Point	DP-49	41° 9.795' N	106° 37.657' W
S	Helispot	H-45	41° 3.151' N	106° 31.296' W
	Helibase	H-45	40° 44.695' N	106° 16.448' W
	Incident Command Post	ICP	40° 44.633' N	106° 16.150' W
	Repeater	CMD-1	41° 1.986' N	106° 41.033' W
	Repeater	CMD-2	40° 55.025' N	106° 26.613' W
	Repeater	CMD-3	41° 19.227' N	106° 20.433' W