

# RYAN FIRE

## Pilot Map

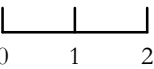
WY-MRF-000598  
Sept. 27, 2018  
Day Shift

21,085 acres  
as of 9/26/18 1630hrs

### Legend

- Aerial Hazard
- Aerial Hazard
- Uncontrolled Fire Edge
- Completed Line
- Completed Dozer Line
- Other
- Airstrip or Airport
- Dip Site
- Drop Point
- Fire Origin
- Gate
- Helispot
- Repeater
- Spot Fire
- Water Source
- Division Break
- TFR 8/7064 9-23-18
- Wilderness
- Roads**
- High Clearance Route Identified For Use
- Gravel Road, Suitable for Passenger Car
- Gravel Road, Moderate Comfort Level
- Highway

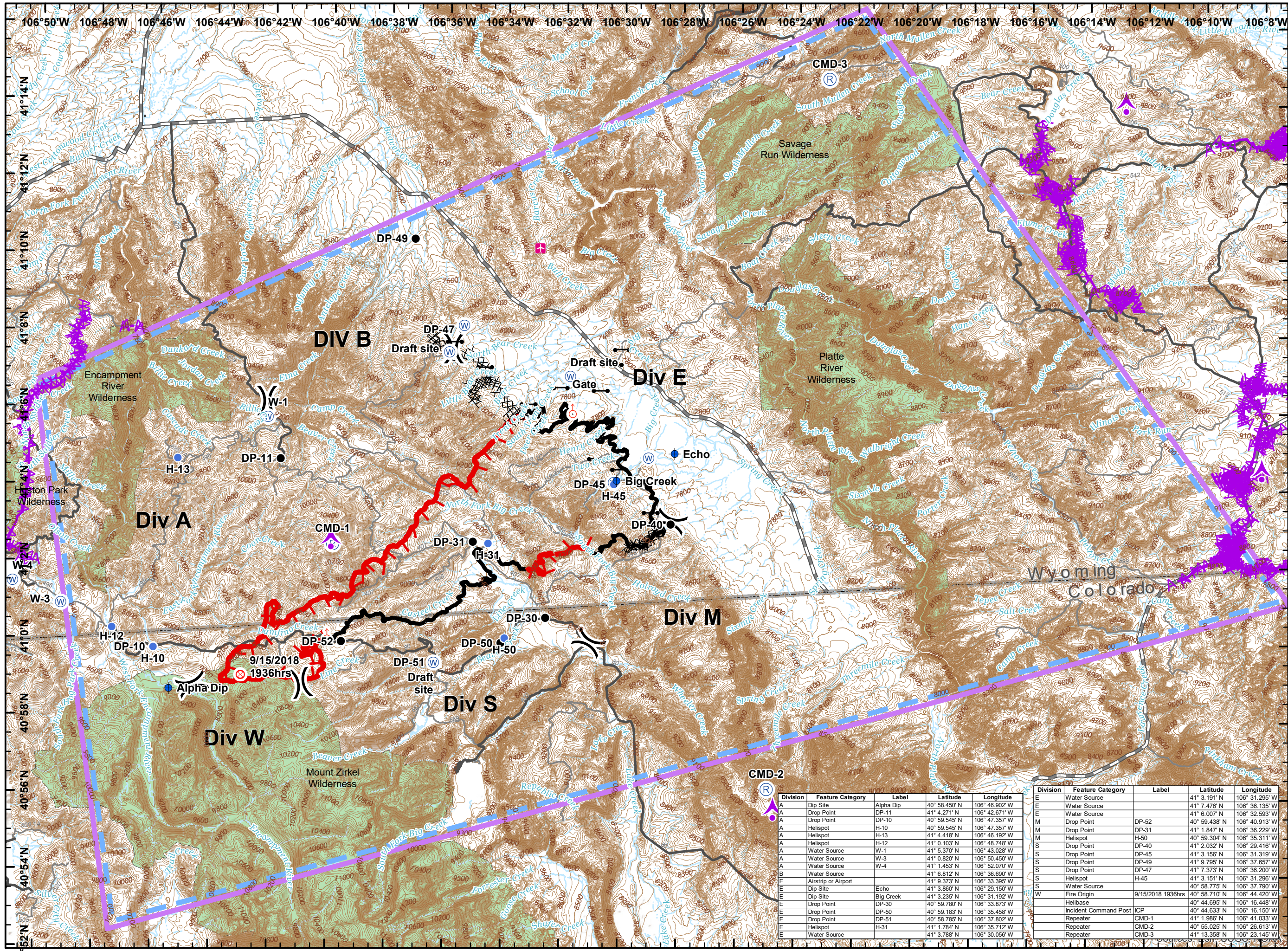
Miles



NAD 83  
UTM Zone 12



SMcCormick  
9/26/2018  
2310



Division	Feature Category	Label	Latitude	Longitude
A	Dip Site	Alpha Dip	40° 58.450' N	106° 46.902' W
A	Drop Point	DP-11	41° 4.271' N	106° 42.671' W
A	Drop Point	DP-10	40° 59.545' N	106° 47.357' W
A	Helispot	H-10	40° 59.545' N	106° 47.357' W
A	Helispot	H-13	41° 4.418' N	106° 46.192' W
A	Helispot	H-12	41° 0.103' N	106° 48.748' W
A	Water Source	W-1	41° 5.370' N	106° 43.028' W
A	Water Source	W-3	41° 0.820' N	106° 50.450' W
A	Water Source	W-4	41° 1.453' N	106° 52.070' W
B	Water Source		41° 6.812' N	106° 36.690' W
E	Airstrip or Airport		41° 9.373' N	106° 33.395' W
E	Dip Site	Echo	41° 3.860' N	106° 29.192' W
E	Drop Point	DP-30	40° 59.280' N	106° 31.150' W
E	Drop Point	DP-50	40° 59.183' N	106° 35.458' W
E	Drop Point	DP-51	40° 58.785' N	106° 37.802' W
E	Helispot	H-31	41° 1.784' N	106° 35.712' W
E	Water Source		41° 3.788' N	106° 30.056' W
E	Water Source		41° 3.191' N	106° 31.295' W
E	Water Source		41° 7.476' N	106° 36.135' W
E	Water Source		41° 6.007' N	106° 32.593' W
M	Drop Point	DP-52	40° 59.438' N	106° 40.913' W
M	Drop Point	DP-31	41° 1.847' N	106° 36.229' W
M	Helispot	H-50	40° 59.304' N	106° 35.311' W
S	Drop Point	DP-40	41° 2.032' N	106° 29.416' W
S	Drop Point	DP-45	41° 3.156' N	106° 31.319' W
S	Drop Point	DP-49	41° 9.795' N	106° 37.657' W
S	Drop Point	DP-47	41° 7.373' N	106° 36.200' W
S	Helispot	H-45	41° 3.151' N	106° 31.296' W
S	Water Source		40° 58.775' N	106° 37.790' W
W	Fire Origin	9/15/2018 1936hrs	40° 58.710' N	106° 44.420' W
W	Helibase		40° 44.695' N	106° 16.448' W
W	Incident Command Post	ICP	40° 44.633' N	106° 16.150' W
W	Repeater	CMD-1	41° 1.986' N	106° 41.033' W
W	Repeater	CMD-2	40° 55.025' N	106° 26.613' W
W	Repeater	CMD-3	41° 13.358' N	106° 23.145' W

Division	Feature Category	Label	Latitude	Longitude
E	Water Source		41° 3.191' N	106° 31.295' W
E	Water Source		41° 7.476' N	106° 36.135' W
E	Water Source		41° 6.007' N	106° 32.593' W
M	Drop Point	DP-52	40° 59.438' N	106° 40.913' W
M	Drop Point	DP-31	41° 1.847' N	106° 36.229' W
M	Helispot	H-50	40° 59.304' N	106° 35.311' W
S	Drop Point	DP-40	41° 2.032' N	106° 29.416' W
S	Drop Point	DP-45	41° 3.156' N	106° 31.319' W
S	Drop Point	DP-49	41° 9.795' N	106° 37.657' W
S	Drop Point	DP-47	41° 7.373' N	106° 36.200' W
S	Helispot	H-45	41° 3.151' N	106° 31.296' W
S	Water Source		40° 58.775' N	106° 37.790' W
W	Fire Origin	9/15/2018 1936hrs	40° 58.710' N	106° 44.420' W
W	Helibase		40° 44.695' N	106° 16.448' W
W	Incident Command Post	ICP	40° 44.633' N	106° 16.150' W
W	Repeater	CMD-1	41° 1.986' N	106° 41.033' W
W	Repeater	CMD-2	40° 55.025' N	106° 26.613' W
W	Repeater	CMD-3	41° 13.358' N	106° 23.145' W