

# RYAN FIRE Air Operations Map

WY-MRF-000598

Sept. 28, 2018

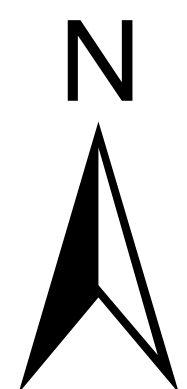
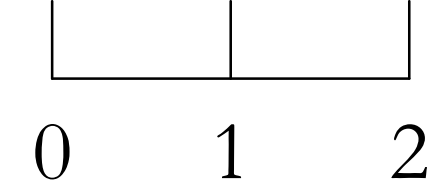
Day Shift

21,631 acres 9/27/18 1800hrs

- Aerial Hazard Point
- Aerial Hazard Line
- Airstrip or Airport
- Dip Site
- Drop Point
- Fire Origin
- Gate
- Helibase
- Helispot
- Incident Command Post
- Repeater
- Spot Fire
- Water Source
- Division Break
- Uncontrolled Fire Edge
- Completed Line
- Completed Dozer Line
- Proposed Dozer Line
- Aerial Retardant Drop
- Other
- TFR 8/7064 9-23-18
- Wildfire Perimeter
- Wildfire Final Fire Perimeter
- Wilderness

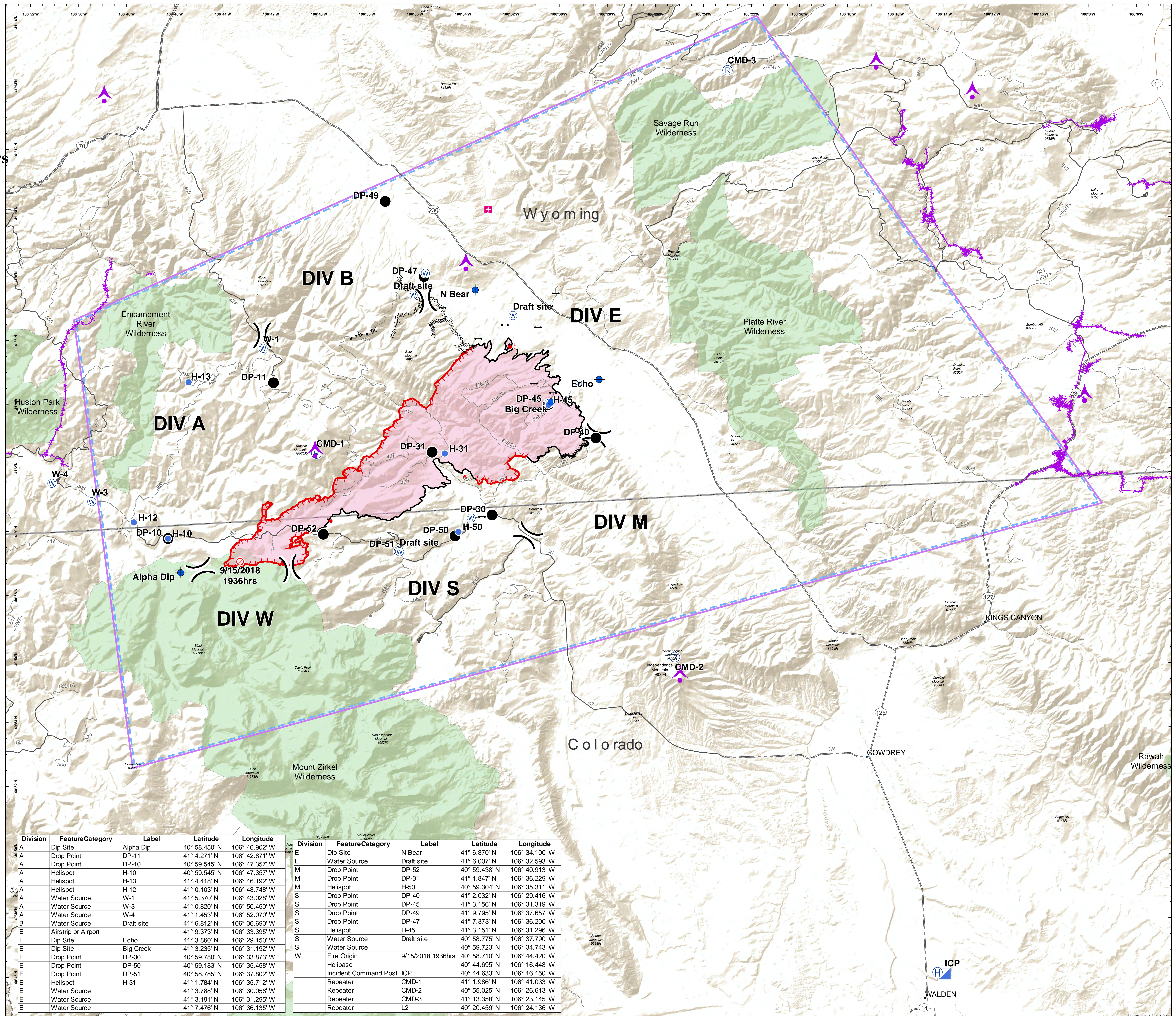
- ### Roads
- High Clearance Route Identified For Use
  - Gravel Road, Suitable for Passenger Car
  - Gravel Road, Moderate Comfort Level
  - Highway

Miles



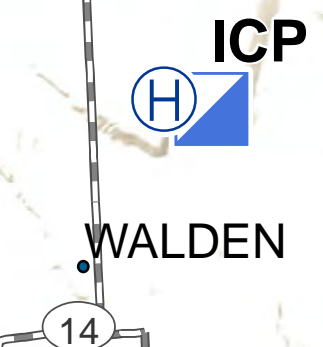
NAD 83  
UTM Zone 12

SMcCormick  
9/27/2018  
2229



| Division | FeatureCategory     | Label      | Latitude      | Longitude      |
|----------|---------------------|------------|---------------|----------------|
| A        | Dip Site            | Alpha Dip  | 40° 58.450' N | 106° 46.902' W |
| A        | Drop Point          | DP-11      | 41° 4.271' N  | 106° 42.671' W |
| A        | Drop Point          | DP-10      | 40° 59.545' N | 106° 47.357' W |
| A        | Helispot            | H-10       | 40° 59.545' N | 106° 47.357' W |
| A        | Helispot            | H-13       | 41° 4.418' N  | 106° 46.192' W |
| A        | Helispot            | H-12       | 41° 0.103' N  | 106° 48.748' W |
| A        | Water Source        | W-1        | 41° 5.370' N  | 106° 43.028' W |
| A        | Water Source        | W-3        | 41° 0.820' N  | 106° 50.450' W |
| A        | Water Source        | W-4        | 41° 1.453' N  | 106° 52.070' W |
| B        | Water Source        | Draft site | 41° 6.812' N  | 106° 36.690' W |
| E        | Airstrip or Airport |            | 41° 9.373' N  | 106° 33.395' W |
| E        | Dip Site            | Echo       | 41° 3.860' N  | 106° 29.150' W |
| E        | Dip Site            | Big Creek  | 41° 3.235' N  | 106° 31.192' W |
| E        | Drop Point          | DP-30      | 40° 59.780' N | 106° 33.873' W |
| E        | Drop Point          | DP-50      | 40° 59.183' N | 106° 35.458' W |
| E        | Drop Point          | DP-51      | 40° 58.785' N | 106° 37.802' W |
| E        | Helispot            | H-31       | 41° 1.784' N  | 106° 35.712' W |
| E        | Water Source        |            | 41° 3.788' N  | 106° 30.056' W |
| E        | Water Source        |            | 41° 3.191' N  | 106° 31.295' W |
| E        | Water Source        |            | 41° 7.476' N  | 106° 36.135' W |

| Division | FeatureCategory       | Label             | Latitude      | Longitude      |
|----------|-----------------------|-------------------|---------------|----------------|
| E        | Dip Site              | N Bear            | 41° 6.870' N  | 106° 34.100' W |
| E        | Water Source          | Draft site        | 41° 6.007' N  | 106° 32.593' W |
| M        | Drop Point            | DP-52             | 40° 59.438' N | 106° 40.913' W |
| M        | Drop Point            | DP-31             | 41° 1.847' N  | 106° 36.229' W |
| M        | Helispot              | H-50              | 40° 59.304' N | 106° 35.311' W |
| S        | Drop Point            | DP-40             | 41° 2.032' N  | 106° 29.416' W |
| S        | Drop Point            | DP-45             | 41° 3.156' N  | 106° 31.319' W |
| S        | Drop Point            | DP-49             | 41° 9.795' N  | 106° 37.657' W |
| S        | Drop Point            | DP-47             | 41° 7.373' N  | 106° 36.200' W |
| S        | Helispot              | H-45              | 41° 3.151' N  | 106° 31.296' W |
| S        | Water Source          | Draft site        | 40° 58.775' N | 106° 37.790' W |
| S        | Water Source          |                   | 40° 59.723' N | 106° 34.743' W |
| W        | Fire Origin           | 9/15/2018 1936hrs | 40° 58.710' N | 106° 44.420' W |
|          | Helibase              |                   | 40° 44.695' N | 106° 16.448' W |
|          | Incident Command Post | ICP               | 40° 44.633' N | 106° 16.150' W |
|          | Repeater              | CMD-1             | 41° 1.986' N  | 106° 41.033' W |
|          | Repeater              | CMD-2             | 40° 55.025' N | 106° 26.613' W |
|          | Repeater              | CMD-3             | 41° 13.358' N | 106° 23.145' W |
|          | Repeater              | L2                | 40° 20.459' N | 106° 24.136' W |



WALDEN