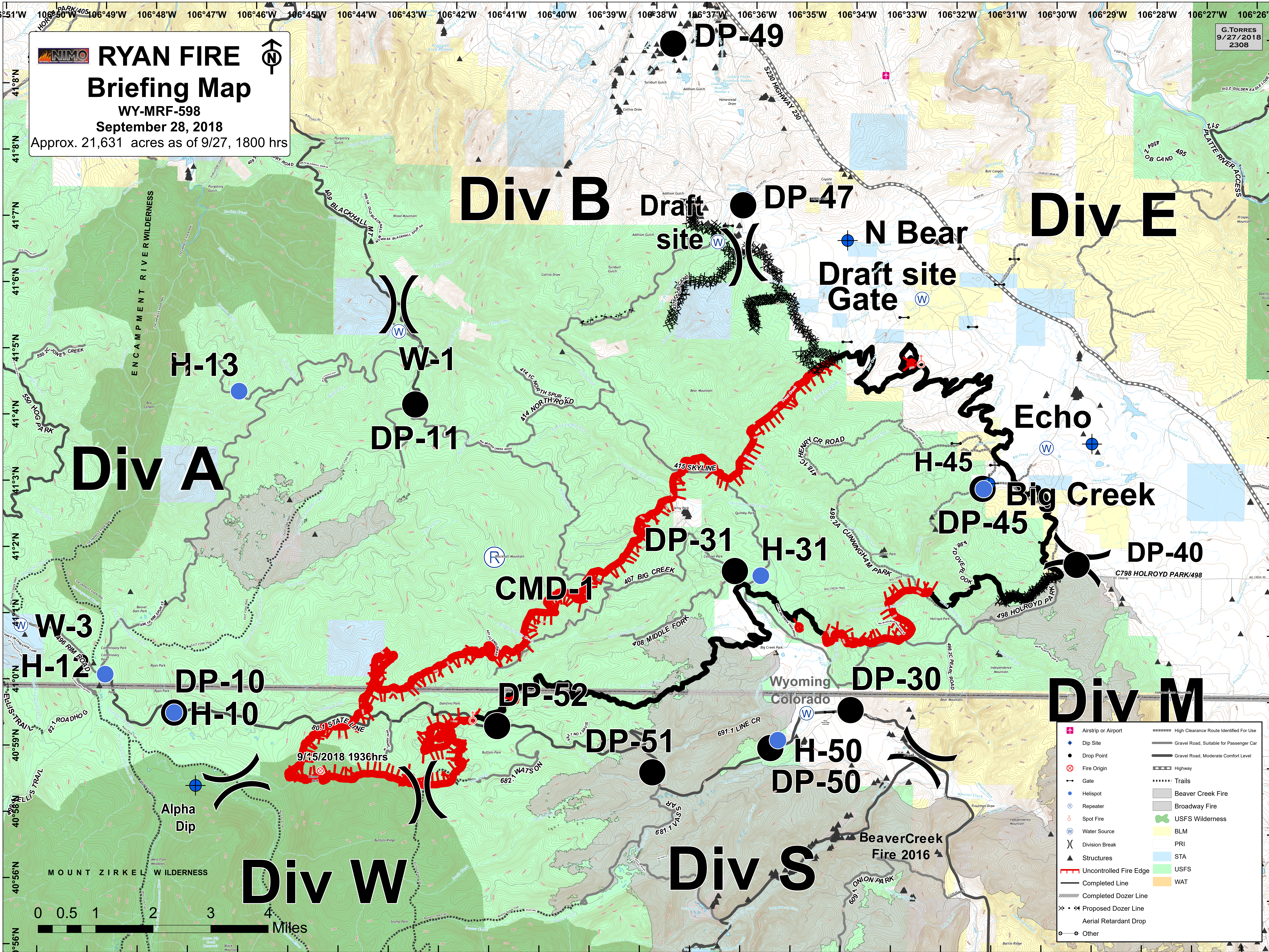


NIMO RYAN FIRE
Briefing Map
 WY-MRF-598
 September 28, 2018
 Approx. 21,631 acres as of 9/27, 1800 hrs

G.TORRES
 9/27/2018
 2308



	Airstrip or Airport		High Clearance Route Identified For Use
	Dip Site		Gravel Road, Suitable for Passenger Car
	Drop Point		Gravel Road, Moderate Comfort Level
	Fire Origin		Highway
	Gate		Trails
	Helisite		Beaver Creek Fire
	Repeater		Spot Fire
	Water Source		USFS Wilderness
	Division Break		BLM
	Uncontrolled Fire Edge		PRI
	Completed Line		STA
	Completed Dozer Line		USFS
	Proposed Dozer Line		WAT
	Aerial Retardant Drop		
	Other		

0 0.5 1 2 3 4 Miles