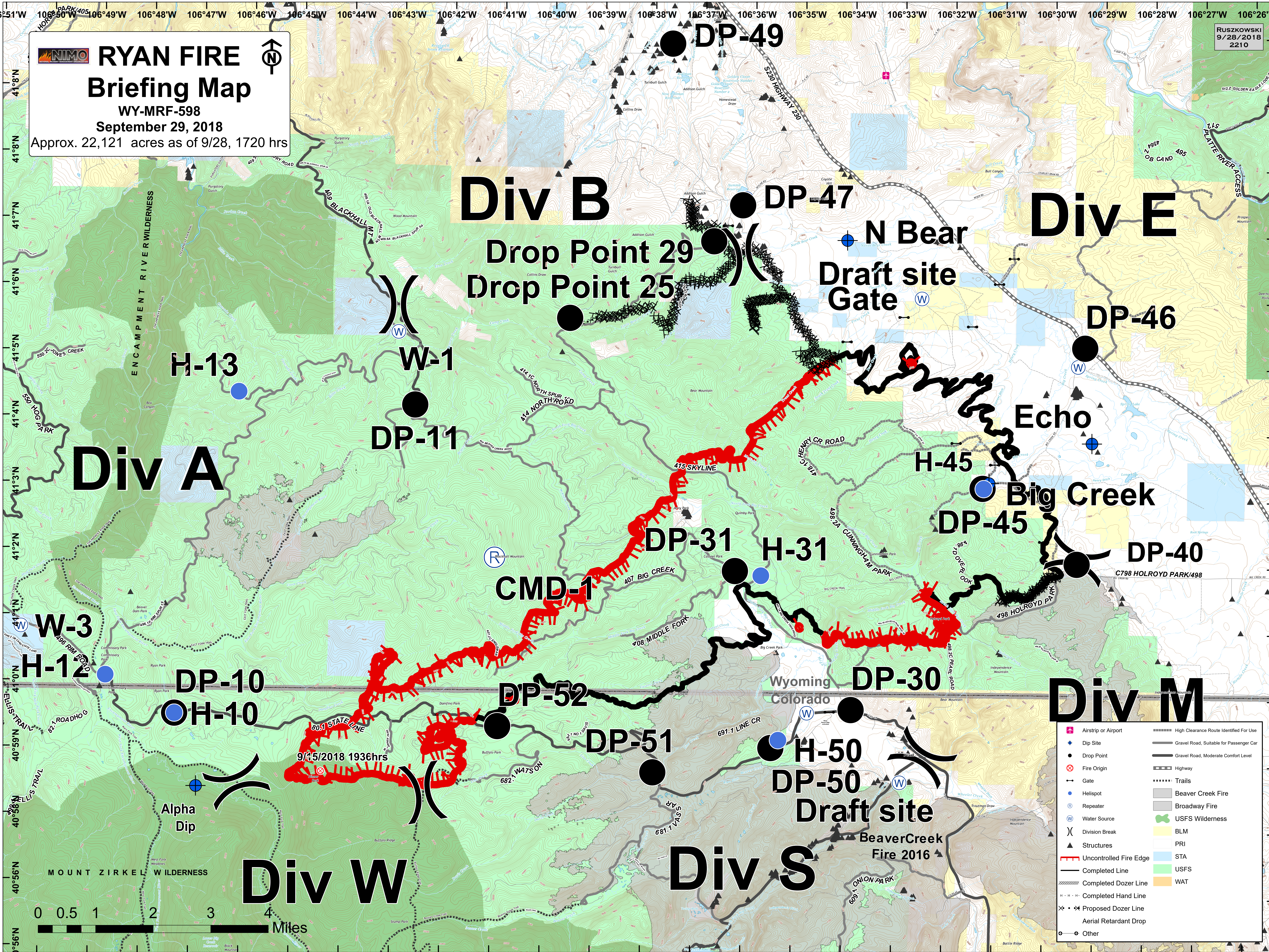


NIMO RYAN FIRE
Briefing Map
 WY-MRF-598
 September 29, 2018
 Approx. 22,121 acres as of 9/28, 1720 hrs

RUSZKOWSKI
 9/28/2018
 2210



	Airstrip or Airport		High Clearance Route Identified For Use
	Dip Site		Gravel Road, Suitable for Passenger Car
	Drop Point		Gravel Road, Moderate Comfort Level
	Fire Origin		Highway
	Gate		Trails
	Helisite		Beaver Creek Fire
	Repeater		Brushway Fire
	Water Source		USFS Wilderness
	Division Break		BLM
	Structures		PRI
	Uncontrolled Fire Edge		STA
	Completed Line		USFS
	Completed Dozer Line		WAT
	Completed Hand Line		
	Proposed Dozer Line		
	Aerial Retardant Drop		
	Other		