

# RYAN FIRE

## Air Operations Map

WY-MRF-000598

Sept. 30, 2018

Day Shift

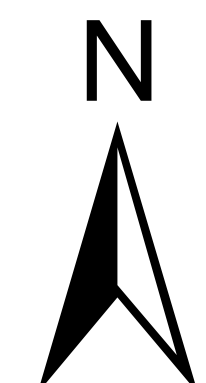
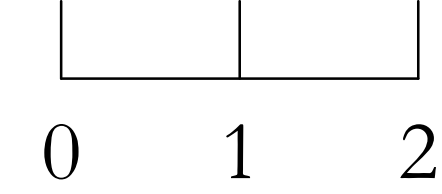
23,612 acres 9/29/18 1700hrs

- Aerial Hazard Point
- Aerial Hazard Line
- Airstrip or Airport
- Dip Site
- Drop Point
- Fire Origin
- Gate
- Helibase
- Helispot
- Incident Command Post
- Repeater
- Water Source
- Division Break
- Uncontrolled Fire Edge
- Completed Line
- Completed Dozer Line
- Completed Hand Line
- Proposed Dozer Line
- Aerial Retardant Drop
- Other
- TFR 8/7064 9-23-18
- Wildfire Perimeter
- Wilderness

### Roads

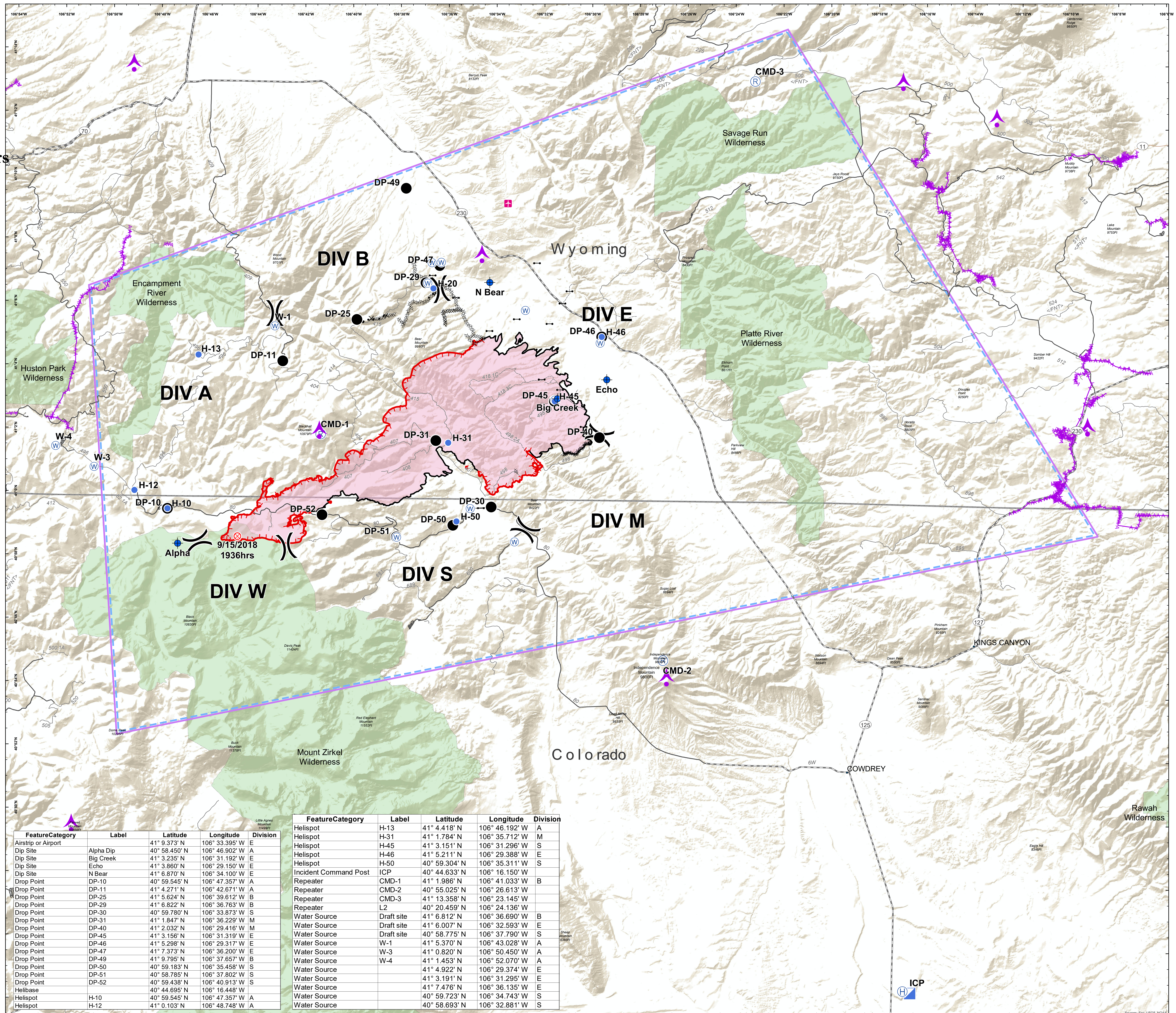
- High Clearance Route Identified For Use
- Gravel Road, Suitable for Passenger Car
- Gravel Road, Moderate Comfort Level
- Highway

Miles



NAD 83  
UTM Zone 13

SMcCormick  
9/29/2018  
2227



FeatureCategory	Label	Latitude	Longitude	Division
Helispot	H-13	41° 4.418' N	106° 46.192' W	A
Helispot	H-31	41° 1.784' N	106° 35.712' W	M
Helispot	H-45	41° 3.151' N	106° 31.296' W	S
Helispot	H-46	41° 5.211' N	106° 29.388' W	S
Helispot	H-50	40° 59.304' N	106° 35.311' W	E
Incident Command Post	ICP	40° 44.633' N	106° 16.150' W	
Repeater	CMD-1	41° 1.986' N	106° 41.033' W	B
Repeater	CMD-2	40° 55.025' N	106° 26.613' W	
Repeater	CMD-3	41° 13.358' N	106° 23.145' W	
Repeater	L2	40° 20.459' N	106° 24.136' W	
Water Source	Draft site	41° 6.812' N	106° 36.690' W	B
Water Source	Draft site	41° 6.007' N	106° 32.593' W	E
Water Source	Draft site	40° 58.775' N	106° 37.790' W	S
Water Source	W-1	41° 5.370' N	106° 43.028' W	A
Water Source	W-3	41° 0.820' N	106° 50.450' W	A
Water Source	W-4	41° 1.453' N	106° 52.070' W	A
Water Source	W-4	41° 4.922' N	106° 29.374' W	E
Water Source	W-4	41° 3.191' N	106° 31.295' W	E
Water Source	W-4	41° 7.476' N	106° 36.135' W	E
Water Source	W-4	40° 59.723' N	106° 34.743' W	S
Water Source	W-4	40° 58.693' N	106° 32.881' W	S