

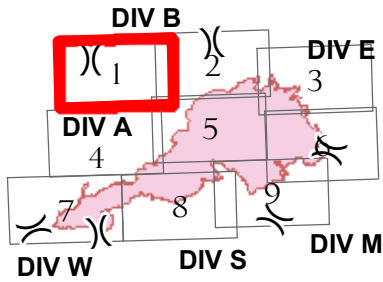
RYAN FIRE IAP Map

WY-MRF-598

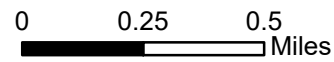
Sept. 30, 2018 - Day

23,612 acres as of 9/29, 1700 hrs

Page 1 of 9



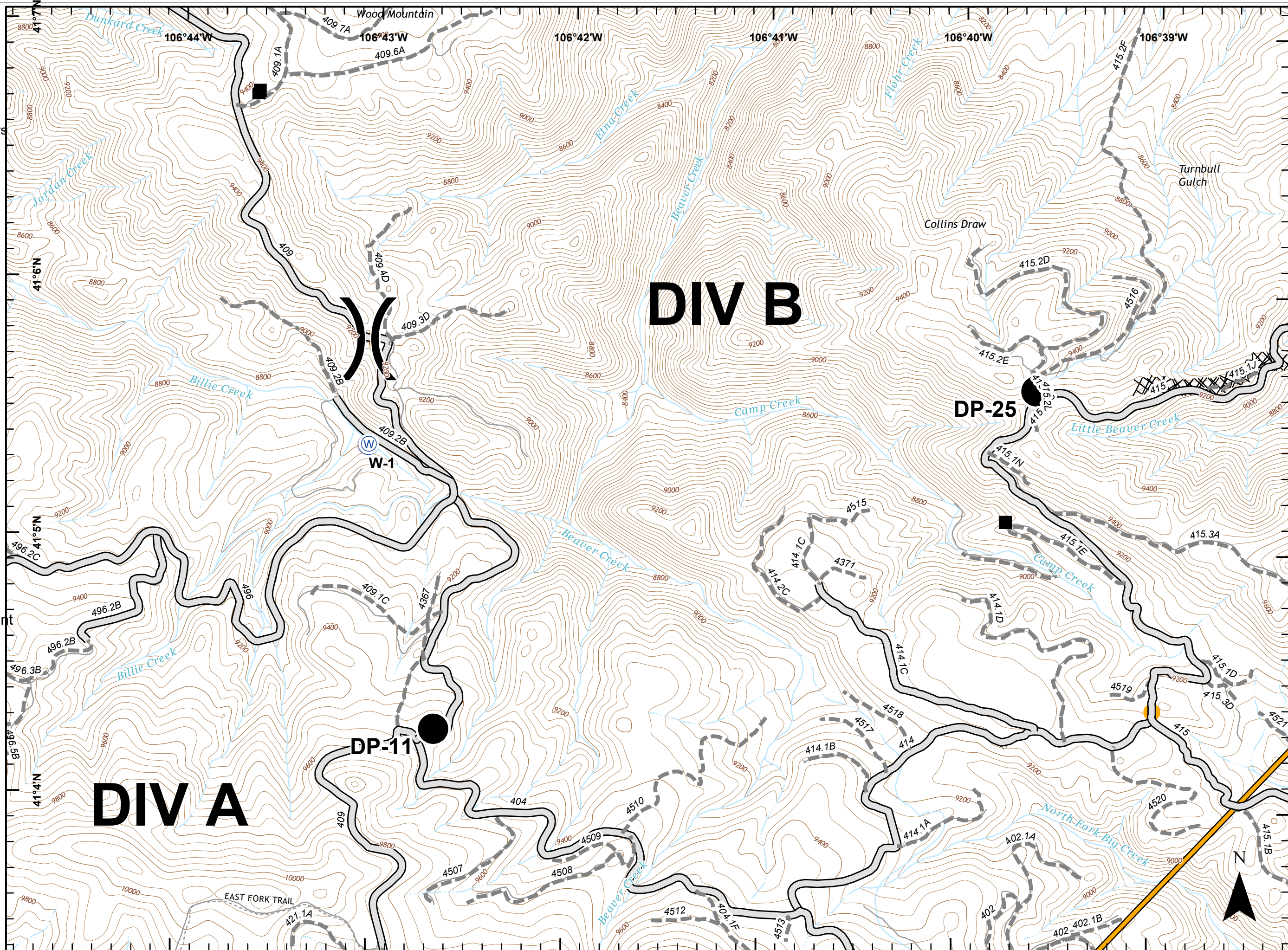
- Structure
- Completed Dozer Line
- Management Action Point
- Road
- Road - High Clearance
- Drop Point
- W Water Source
-) Division Break



NAD 83
UTM Zone 13



Ruszkowski
9/29/2018
2229



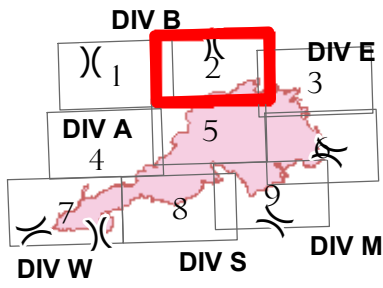
RYAN FIRE IAP Map

WY-MRF-598

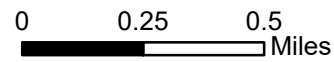
Sept. 30, 2018 - Day

23,612 acres as of 9/29, 1700 hrs

Page 2 of 9



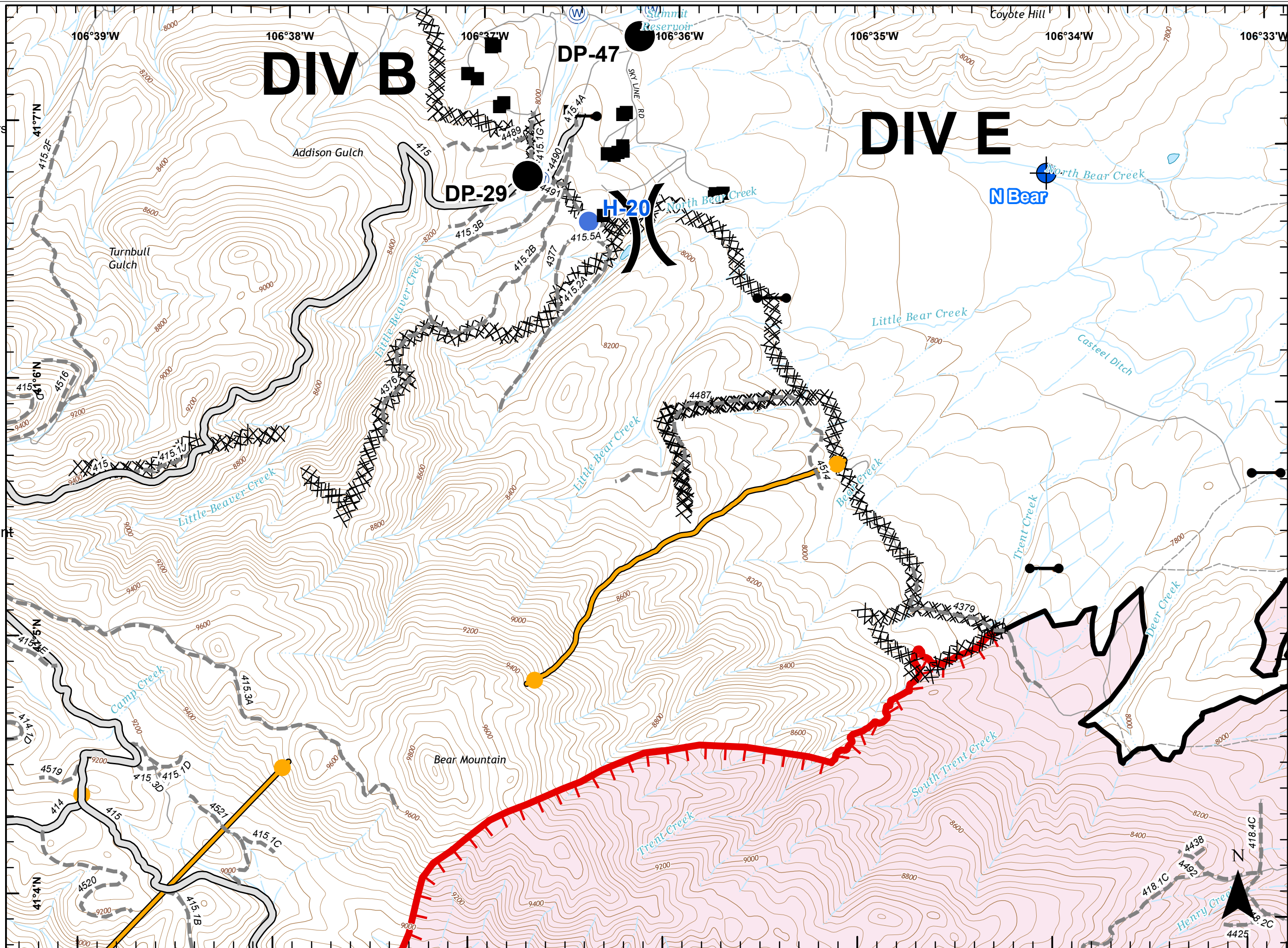
- Structure
- ▬ Uncontrolled Fire Edge
- ▬ Completed Line
- XXXX Completed Dozer Line
- Management Action Point
- ▬ Road
- ▬ Road - High Clearance
- ⊕ Dip Site
- Drop Point
- Gate
- Helispot
- Ⓜ Water Source
-) Division Break



NAD 83
UTM Zone 13



Ruszkowski
9/29/2018
2230



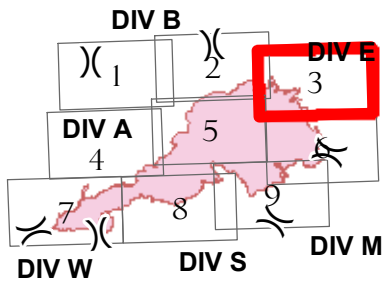
RYAN FIRE IAP Map

WY-MRF-598

Sept. 30, 2018 - Day

23,612 acres as of 9/29, 1700 hrs

Page 3 of 9



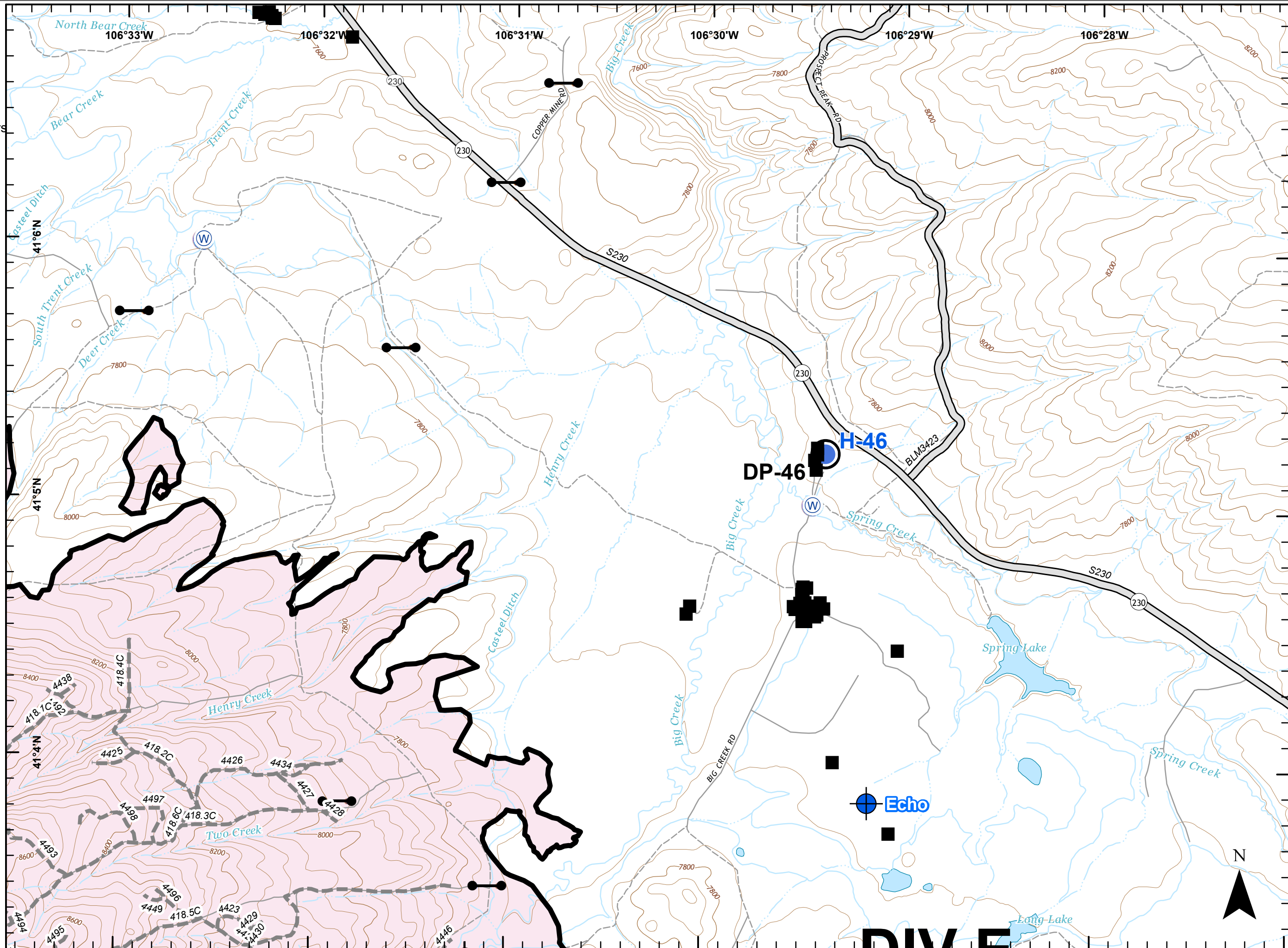
- Structure
- Completed Line
- Road
- - - Road - High Clearance
- ⊕ Dip Site
- Drop Point
- Gate
- Helispot
- ⊕ Water Source

0 0.25 0.5 Miles

NAD 83
UTM Zone 13



Ruszkowski
9/29/2018
2230



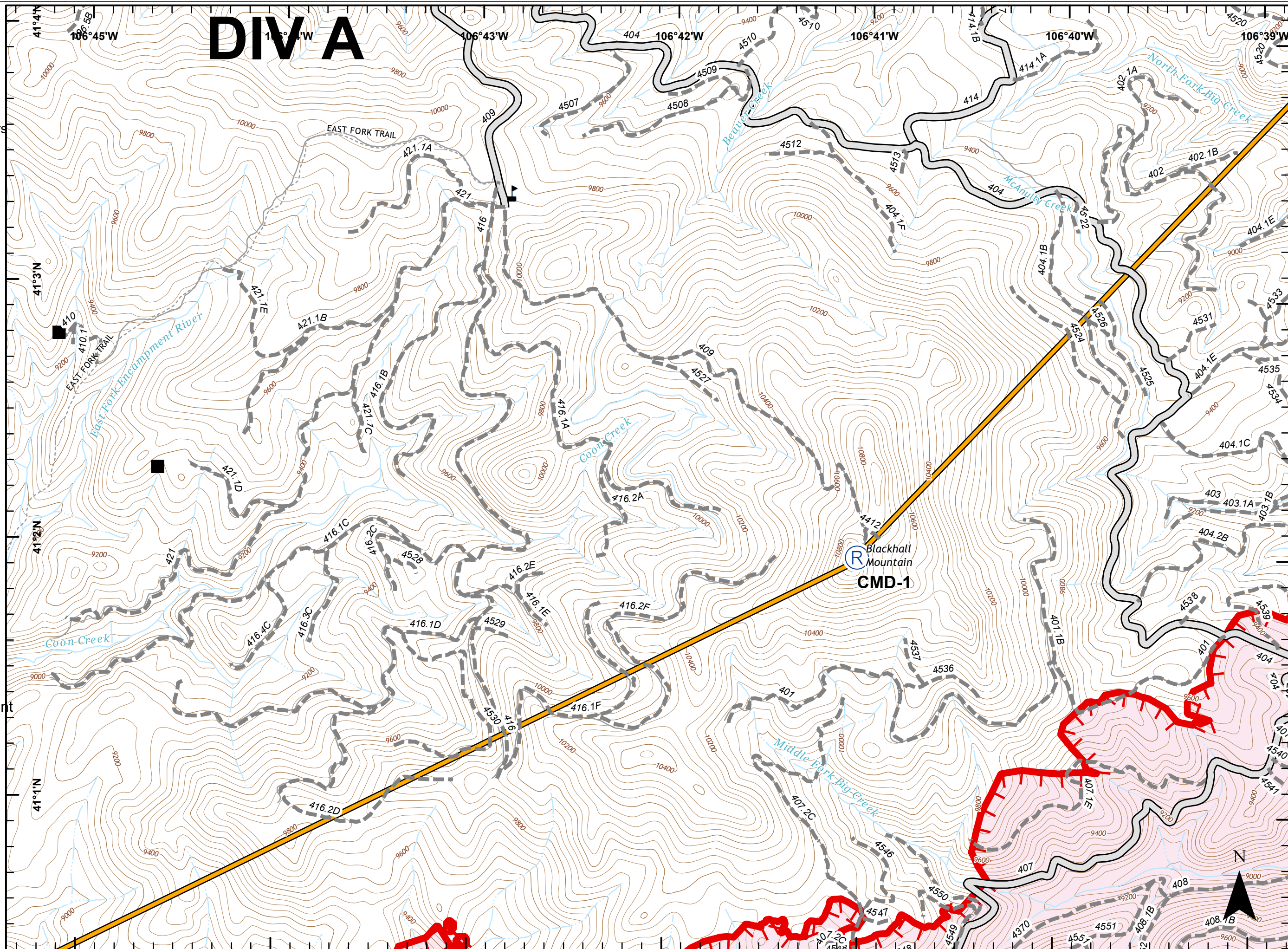
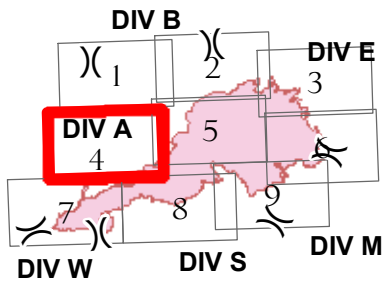
DIV E

RYAN FIRE IAP Map

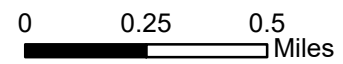
WY-MRF-598
Sept. 30, 2018 - Day

23,612 acres as of 9/29, 1700 hrs

Page 4 of 9



- Structure
- ▬ Uncontrolled Fire Edge
- ▬ Management Action Point
- ▬ Road
- ▬ Road - High Clearance
- Ⓡ Repeater
- ▲ Value at Risk



NAD 83
UTM Zone 13



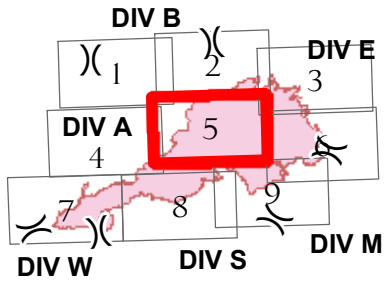
Ruszkowski
9/29/2018
2230

RYAN FIRE IAP Map

WY-MRF-598
Sept. 30, 2018 - Day

23,612 acres as of 9/29, 1700 hrs

Page 5 of 9



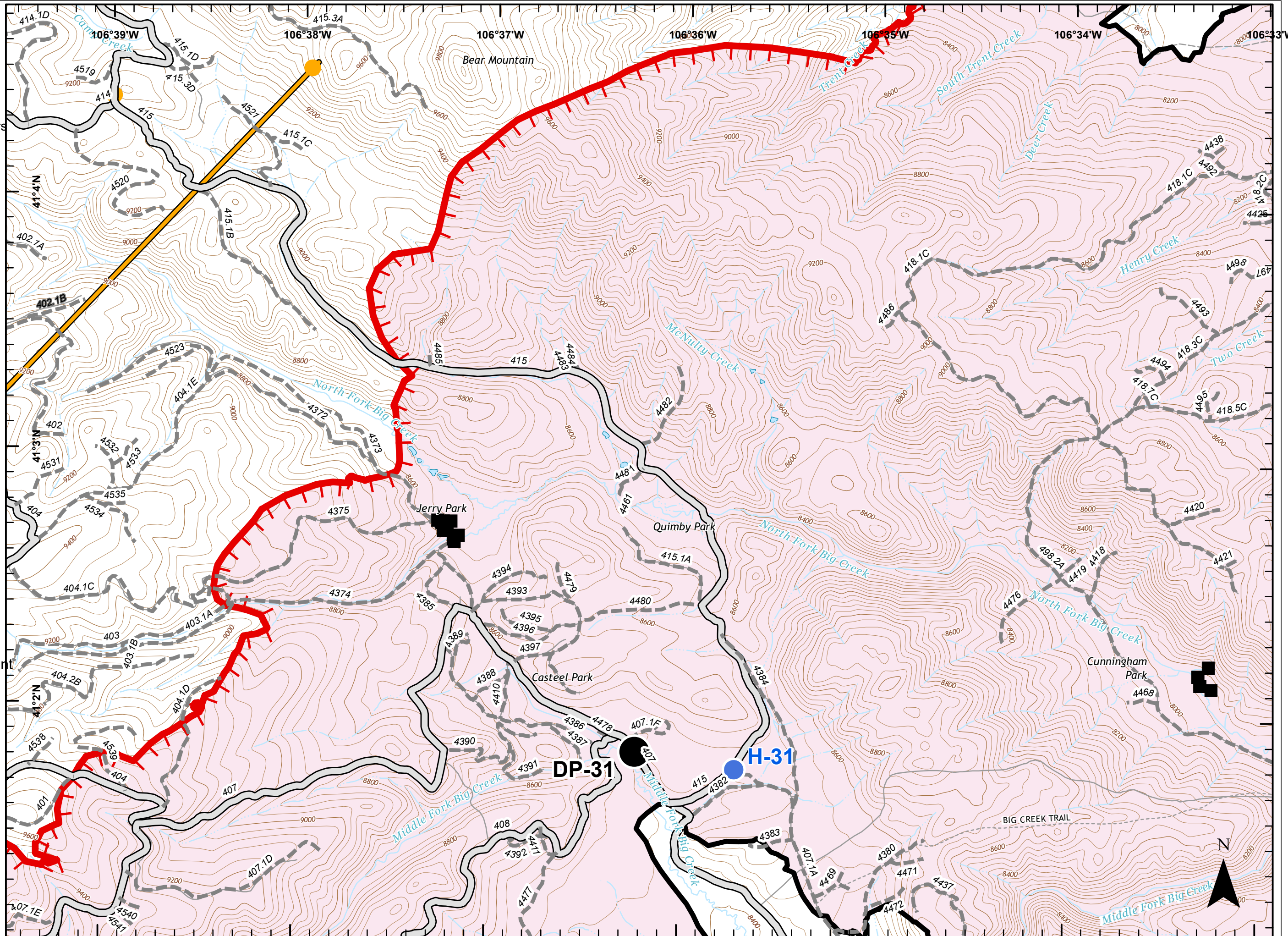
- Structure
- ┌─┴─┐ Uncontrolled Fire Edge
- Completed Line
- Management Action Point
- Road
- - - Road - High Clearance
- Drop Point
- Helispot
- ♫ Value at Risk

0 0.25 0.5 Miles

NAD 83
UTM Zone 13



Ruszkowski
9/29/2018
2230



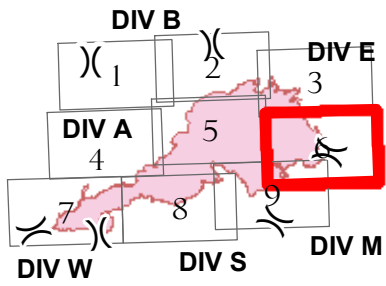
RYAN FIRE IAP Map

WY-MRF-598

Sept. 30, 2018 - Day

23,612 acres as of 9/29, 1700 hrs

Page 6 of 9



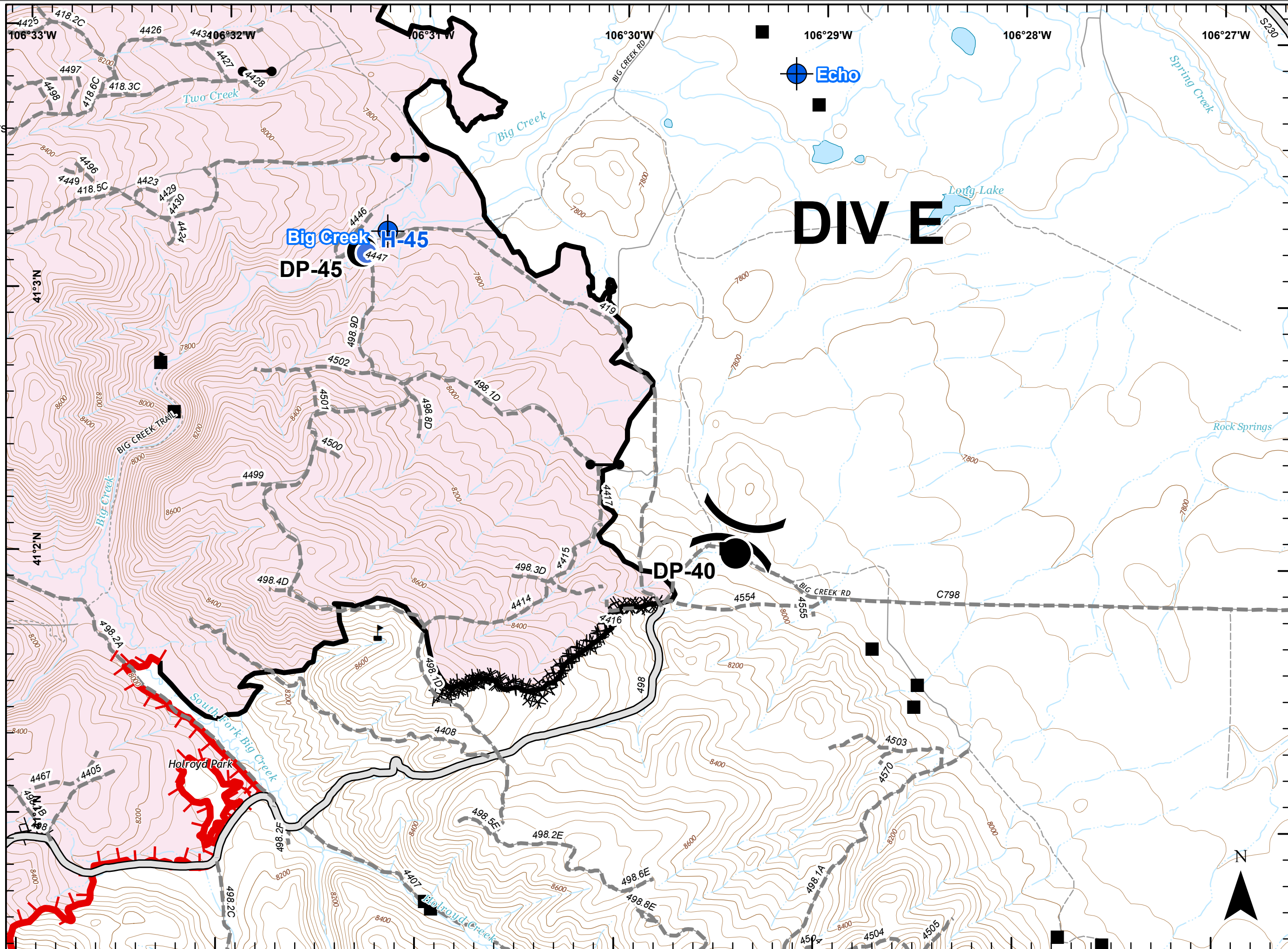
- Structure
- ▬ Uncontrolled Fire Edge
- ▬ Completed Line
- ▬ Completed Dozer Line
- ▬ Road
- ▬ Road - High Clearance
- ⊕ Dip Site
- Drop Point
- ⊙ Gate
- Helispot
- ⊕ Water Source
- ⚠ Value at Risk
- ⌋ Division Break

0 0.25 0.5 Miles

NAD 83
UTM Zone 13



Ruszkowski
9/29/2018
2230



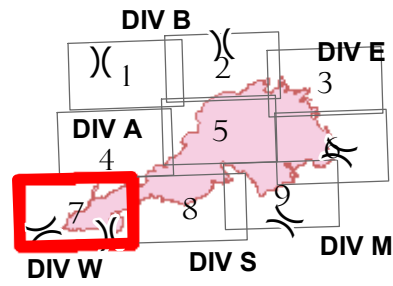
RYAN FIRE IAP Map

WY-MRF-598

Sept. 30, 2018 - Day

23,612 acres as of 9/29, 1700 hrs

Page 7 of 9



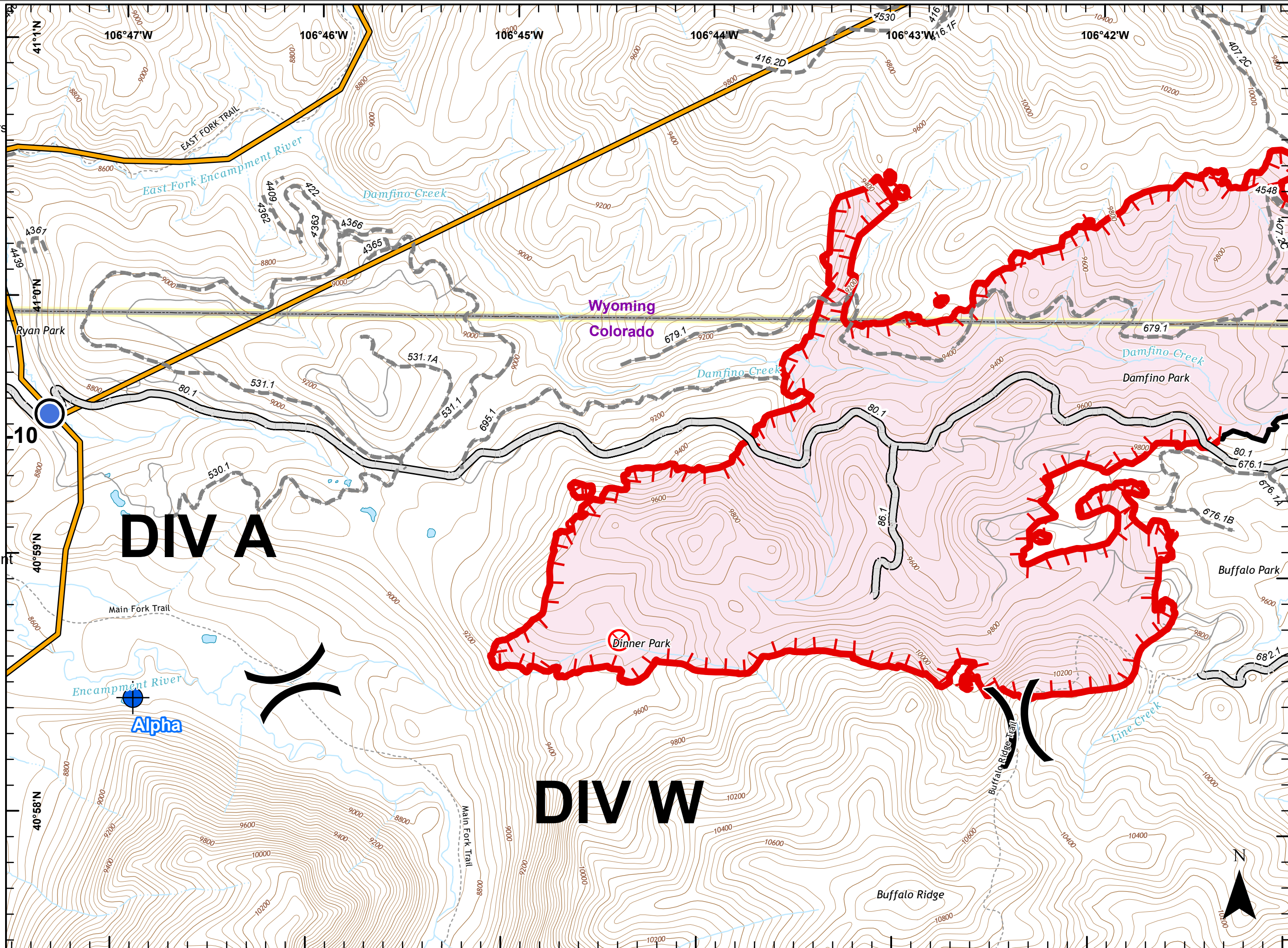
- Uncontrolled Fire Edge
- Completed Line
- Management Action Point
- Road
- Road - High Clearance
- Dip Site
- Drop Point
- Fire Origin
- Helispot
- Division Break

0 0.25 0.5 Miles

NAD 83
UTM Zone 13



Ruszkowski
9/29/2018
2230



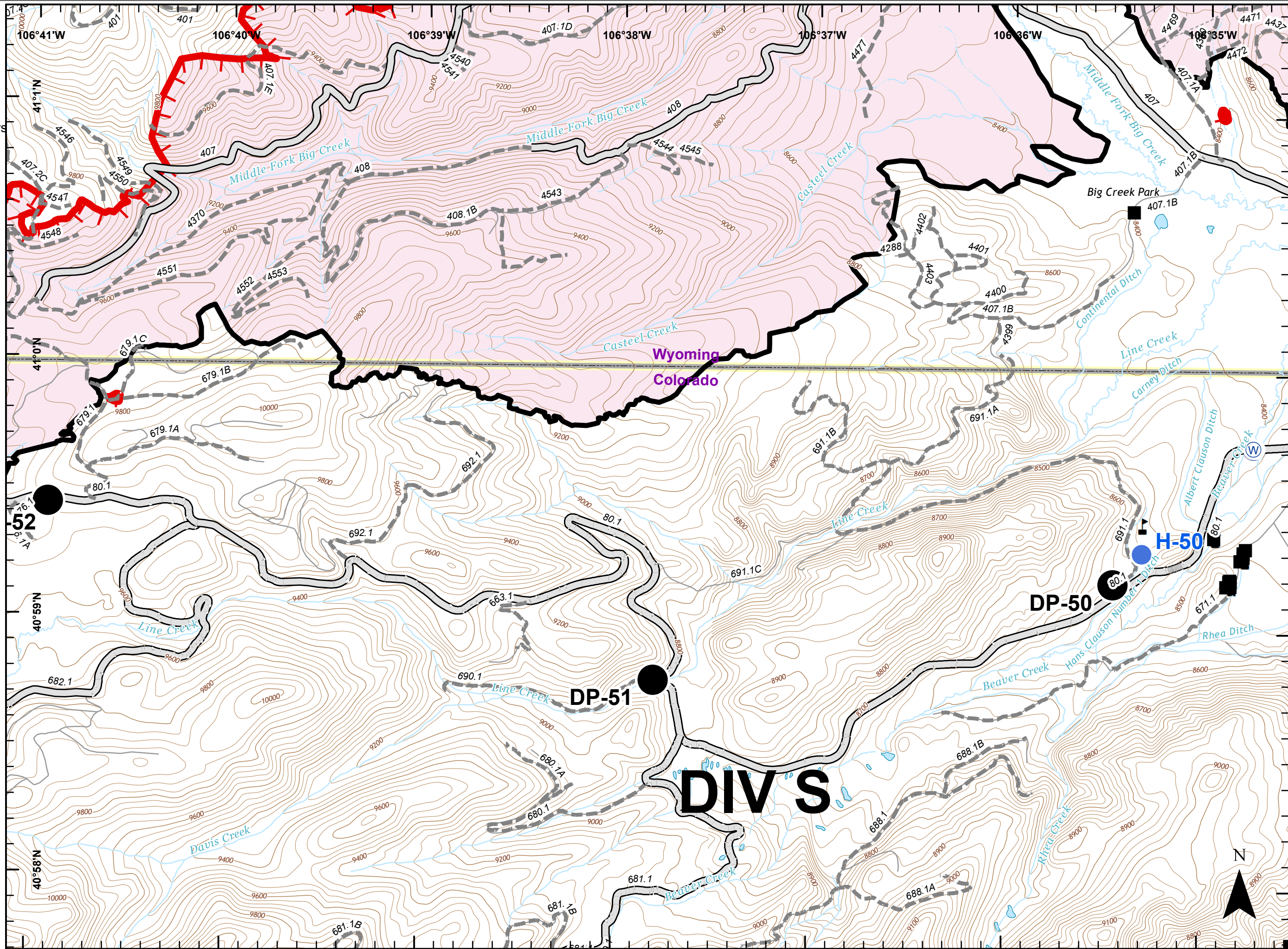
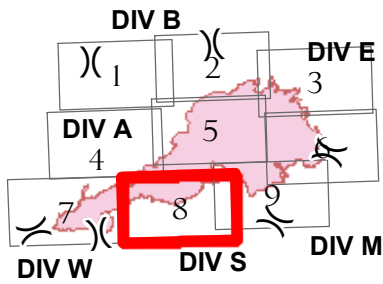
RYAN FIRE IAP Map

WY-MRF-598

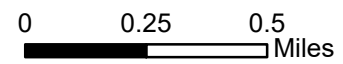
Sept. 30, 2018 - Day

23,612 acres as of 9/29, 1700 hrs

Page 8 of 9



- Structure
- ▬ Uncontrolled Fire Edge
- ▬ Completed Line
- ▬ Road
- ▬ Road - High Clearance
- Drop Point
- Helispot
- Ⓜ Water Source
- ⚠ Value at Risk



NAD 83
UTM Zone 13

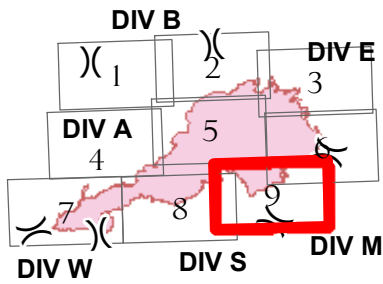
RYAN FIRE IAP Map

WY-MRF-598

Sept. 30, 2018 - Day

23,612 acres as of 9/29, 1700 hrs

Page 9 of 9



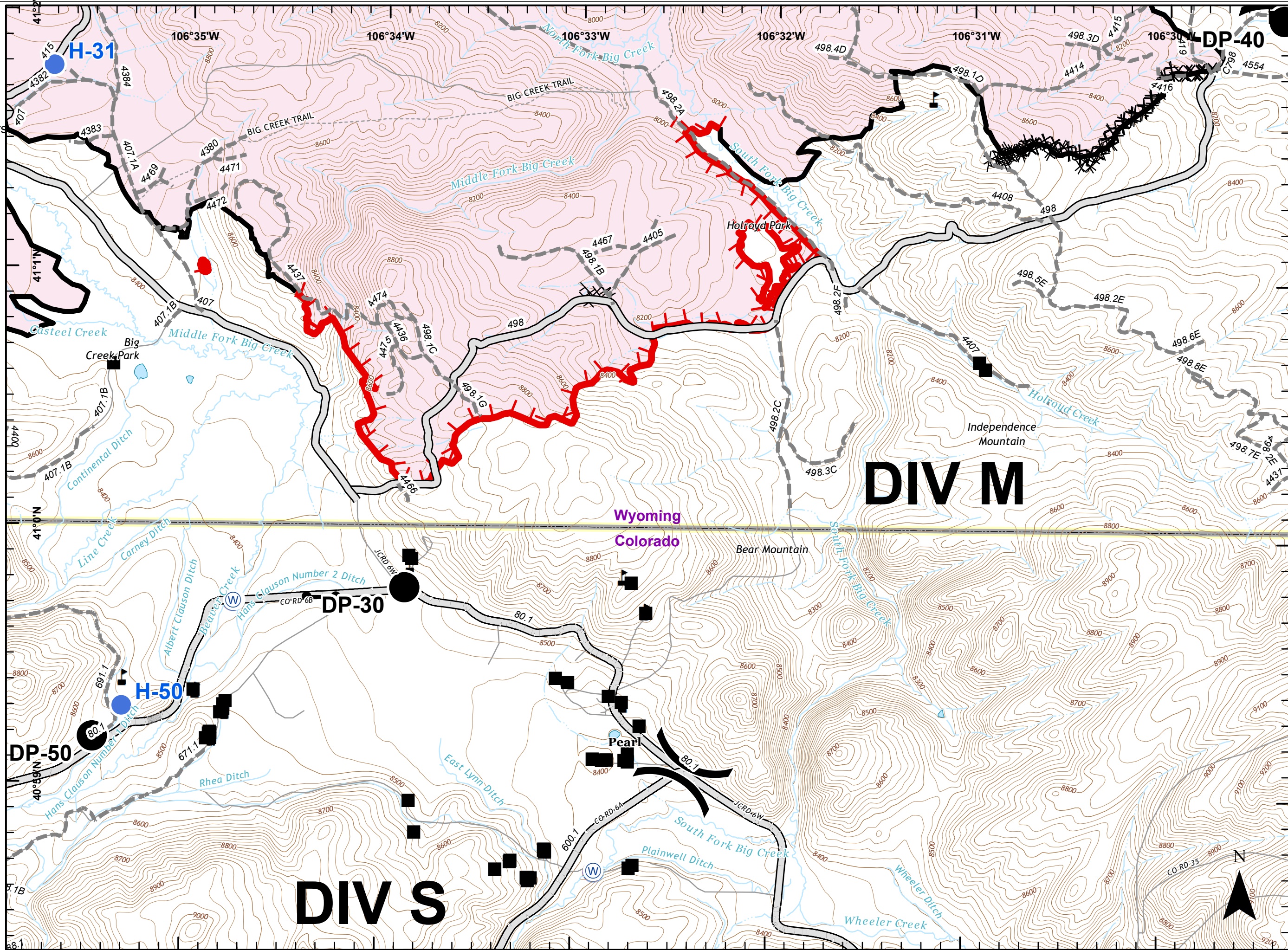
- Structure
- Uncontrolled Fire Edge
- Completed Line
- Completed Dozer Line
- Road
- Road - High Clearance
- Drop Point
- Gate
- Helispot
- Water Source
- Value at Risk
- Division Break

0 0.25 0.5 Miles

NAD 83
UTM Zone 13



Ruszkowski
9/29/2018
2231





RYAN FIRE Transportation

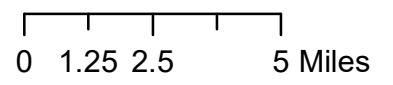
WY-MRF-598
Sept. 30, 2018
Day

23,612 acres
as of 9/29 1700 hrs

Legend

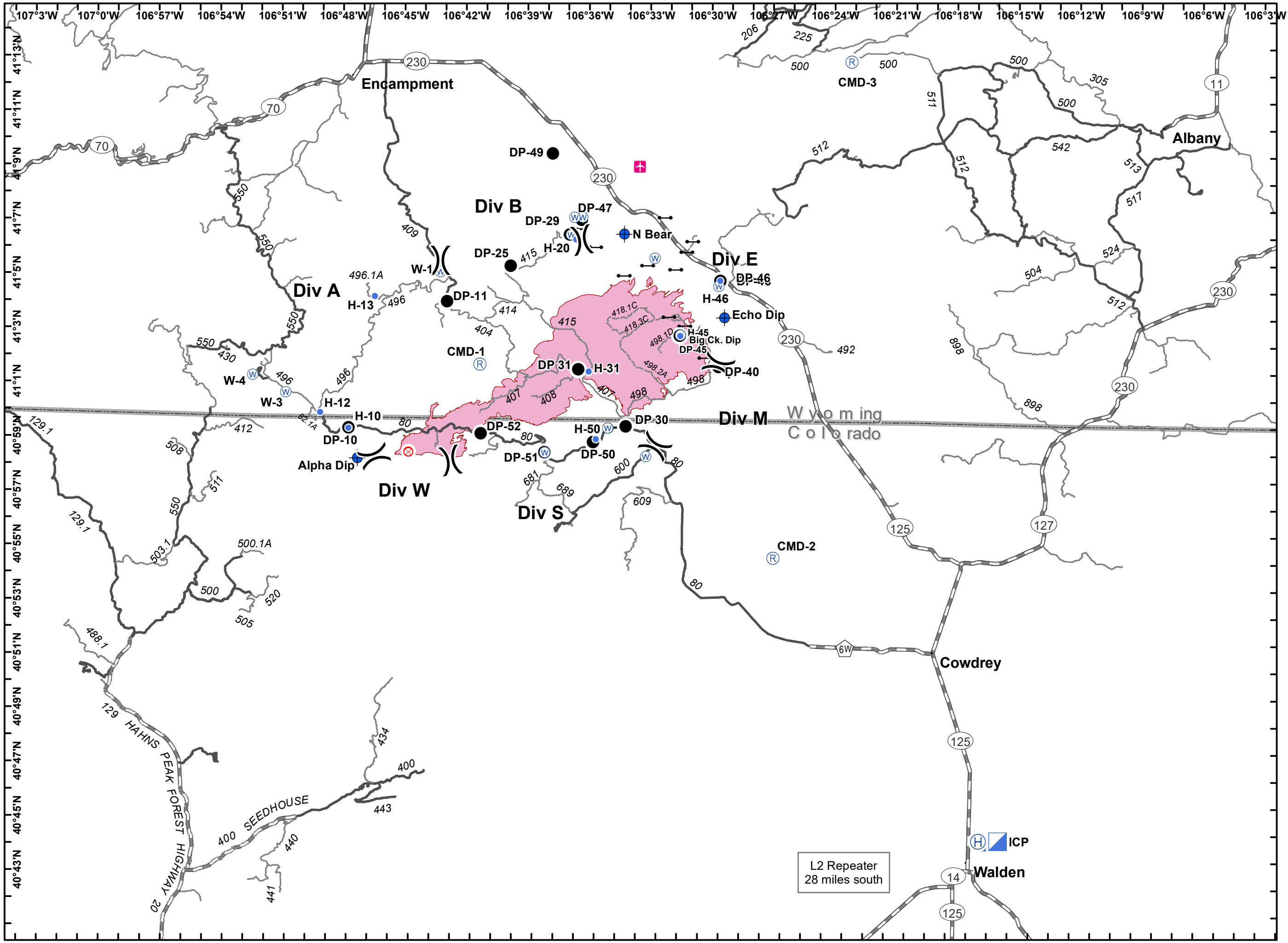
- Airstrip or Airport
- Dip Site
- Drop Point
- Fire Origin
- Gate
- Helibase
- Helispot
- Incident Command Post
- Repeater
- Water Source
- Division Break
- Wildfire Perimeter

- ### Roads
- High Clearance Route Identified For Use
 - Gravel Road, Suitable for Passenger Car
 - Gravel Road, Moderate Comfort Level
 - Highway



EVakili
9/29/18
2214

NAD 83
UTM Zone 13



L2 Repeater
28 miles south