



RYAN FIRE Transportation

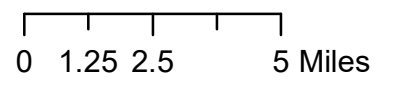
WY-MRF-598
Oct. 1, 2018
Day

26,850 acres
as of 9/30 1649 hrs

Legend

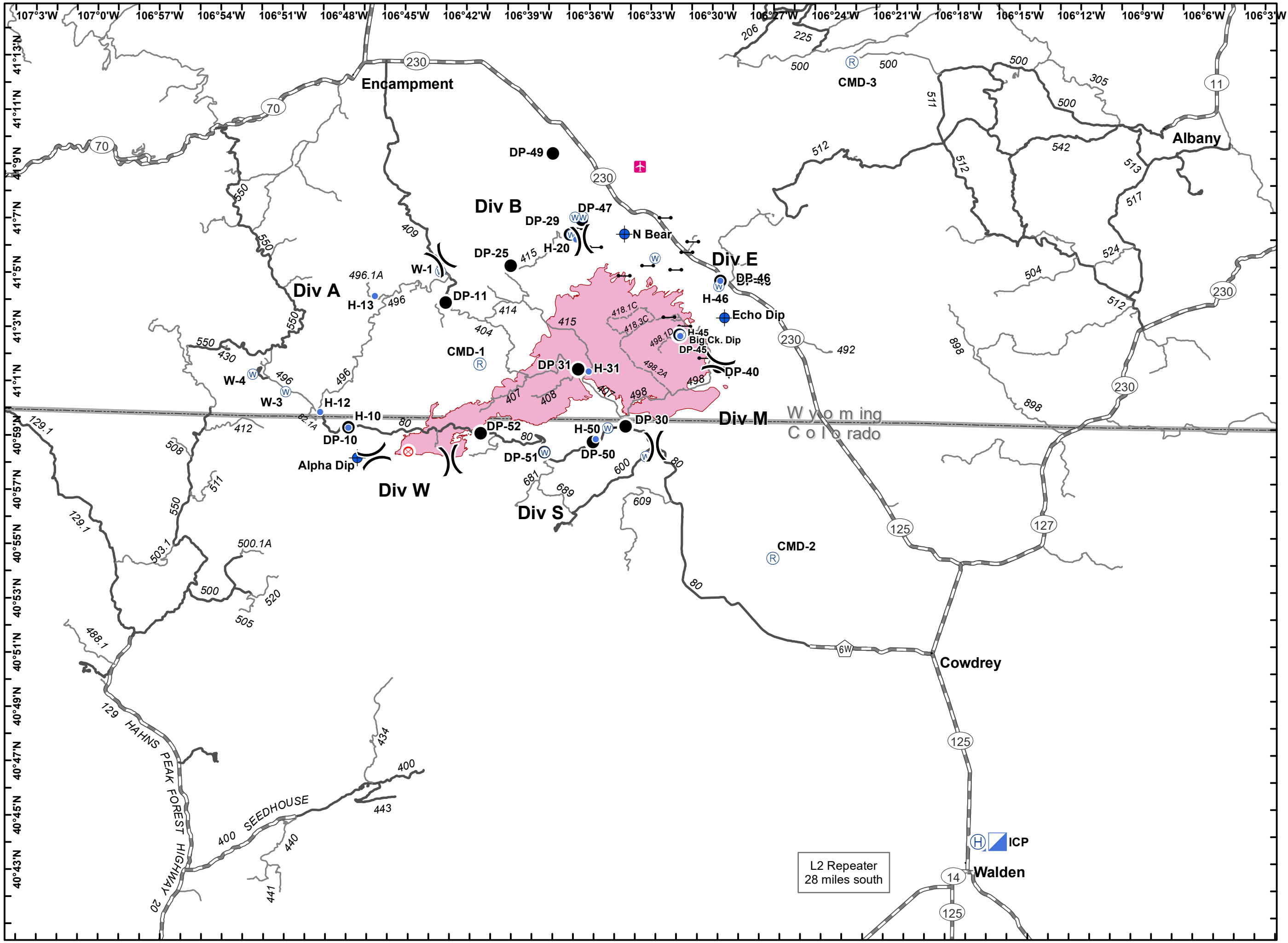
- Airstrip or Airport
- Dip Site
- Drop Point
- Fire Origin
- Gate
- Helibase
- Helispot
- Incident Command Post
- Repeater
- Water Source
- Division Break
- Wildfire Perimeter

- ### Roads
- High Clearance Route Identified For Use
 - Gravel Road, Suitable for Passenger Car
 - Gravel Road, Moderate Comfort Level
 - Highway



EVakili
9/30/18
2226

NAD 83
UTM Zone 13



L2 Repeater
28 miles south