



RYAN FIRE

Pilot Map

WY-MRF-000598
Oct 2, 2018
Day Shift

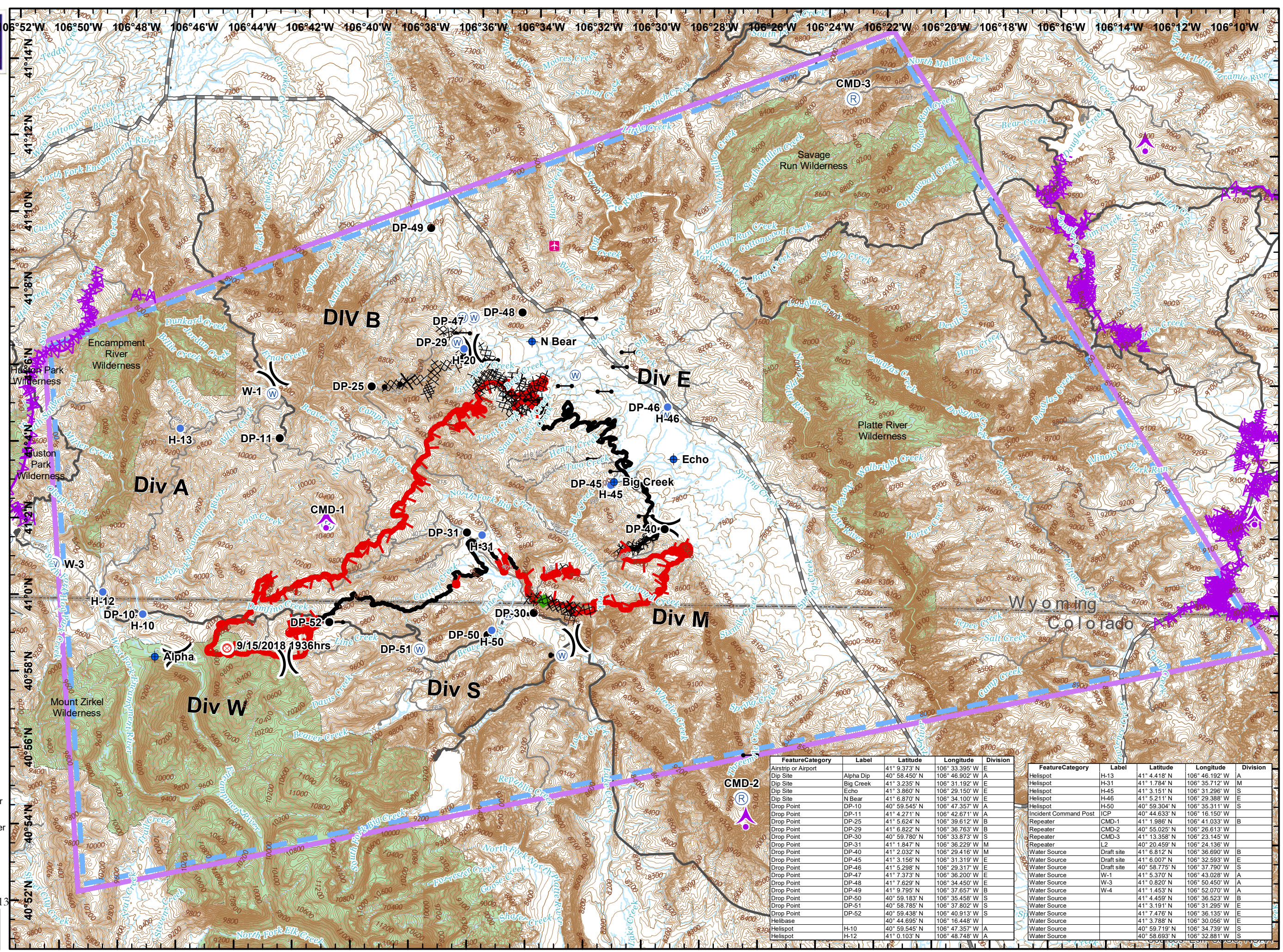
28,234 acres
as of 10/1/18 1725hrs

- Legend**
- Aerial Hazard
 - Aerial Hazard
 - Uncontrolled Fire Edge
 - Completed Line
 - Completed Dozer Line
 - Completed Hand Line
 - Road as Completed Line
 - Proposed Dozer Line
 - Aerial Retardant Drop
 - Escape Route
 - Other
 - Airstrip or Airport
 - Dip Site
 - Drop Point
 - Fire Origin
 - Gate
 - Helispot
 - Repeater
 - Water Source
 - Division Break

- TFR 8/7064 9-23-18
- Wilderness

- Roads**
- High Clearance Route Identified For Use
 - Gravel Road, Suitable for Passenger Car
 - Gravel Road, Moderate Comfort Level
 - Highway

NAD 83
UTM Zone 13
Miles
SMcCormick
10/1/2018
2212



FeatureCategory	Label	Latitude	Longitude	Division
Airstrip or Airport	Alpha Dip	41° 9.373' N	106° 33.395' W	E
Dip Site	Alpha Dip	41° 58.450' N	106° 46.902' W	A
Dip Site	Big Creek	41° 3.235' N	106° 31.192' W	E
Dip Site	Echo	41° 3.860' N	106° 29.150' W	E
Dip Site	N Bear	41° 6.870' N	106° 34.100' W	E
Drop Point	DP-10	40° 59.545' N	106° 47.357' W	A
Drop Point	DP-11	41° 4.271' N	106° 42.671' W	A
Drop Point	DP-25	41° 5.624' N	106° 39.612' W	B
Drop Point	DP-29	41° 6.822' N	106° 36.763' W	B
Drop Point	DP-30	40° 59.780' N	106° 33.873' W	S
Drop Point	DP-31	41° 1.847' N	106° 36.229' W	M
Drop Point	DP-40	41° 2.032' N	106° 29.416' W	M
Drop Point	DP-45	41° 3.156' N	106° 31.319' W	E
Drop Point	DP-46	41° 5.298' N	106° 29.317' W	E
Drop Point	DP-47	41° 7.373' N	106° 36.200' W	E
Drop Point	DP-48	41° 7.629' N	106° 34.450' W	E
Drop Point	DP-49	41° 9.795' N	106° 37.657' W	B
Drop Point	DP-50	40° 59.183' N	106° 35.458' W	S
Drop Point	DP-51	40° 58.785' N	106° 37.802' W	S
Drop Point	DP-52	40° 59.438' N	106° 40.913' W	S
Helibase	H-10	40° 44.695' N	106° 16.448' W	S
Helispot	H-10	40° 59.545' N	106° 47.357' W	A
Helispot	H-12	41° 0.103' N	106° 48.748' W	A

FeatureCategory	Label	Latitude	Longitude	Division
Helispot	H-13	41° 4.418' N	106° 46.192' W	A
Helispot	H-31	41° 1.784' N	106° 35.712' W	M
Helispot	H-45	41° 3.151' N	106° 31.296' W	S
Helispot	H-46	41° 5.211' N	106° 29.388' W	E
Helispot	H-50	40° 59.304' N	106° 35.311' W	S
Incident Command Post	ICP	40° 44.633' N	106° 16.150' W	
Repeater	CMD-1	41° 1.986' N	106° 41.003' W	B
Repeater	CMD-2	40° 55.025' N	106° 26.613' W	
Repeater	CMD-3	41° 13.358' N	106° 23.145' W	
Repeater	L2	40° 20.459' N	106° 24.136' W	
Water Source	Draft site	41° 6.812' N	106° 36.690' W	B
Water Source	Draft site	41° 6.007' N	106° 32.593' W	E
Water Source	Draft site	40° 58.775' N	106° 37.790' W	S
Water Source	W-1	41° 5.370' N	106° 43.028' W	A
Water Source	W-3	41° 0.820' N	106° 50.450' W	A
Water Source	W-4	41° 1.453' N	106° 52.070' W	A
Water Source		41° 4.459' N	106° 36.523' W	B
Water Source		41° 3.191' N	106° 31.295' W	E
Water Source		41° 7.476' N	106° 36.135' W	E
Water Source		41° 3.788' N	106° 30.056' W	E
Water Source		40° 59.719' N	106° 34.739' W	S
Water Source		40° 58.993' N	106° 32.831' W	S