

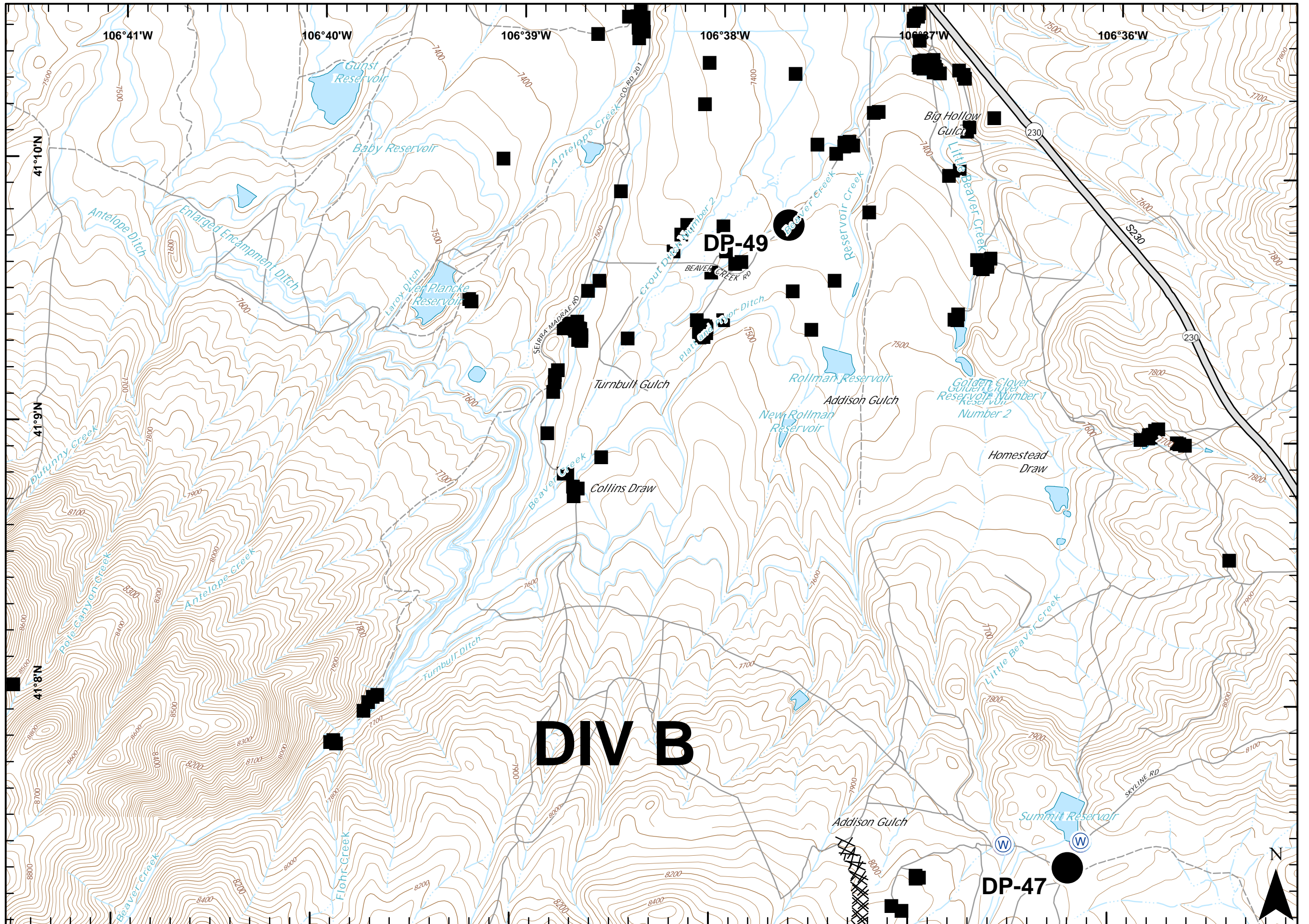


# RYAN FIRE IAP Map WY-MRF-598 Oct 2, 2018 - Day

28,234 ac. as of 10/1, 1725 hrs

Page 1 of 17

		DIV E		
DIV B		1	2	3
DIV A	4	5	6	7
8	9	10	11	12
13	14	15	16	17
DIV W		DIV S		



- Structure
- XXX Completed Dozer Line
- Road
- Drop Point
- W Water Source

0 0.25 0.5 Miles

NAD 83  
UTM Zone 13

Ruszkowski  
10/1/2018  
2219





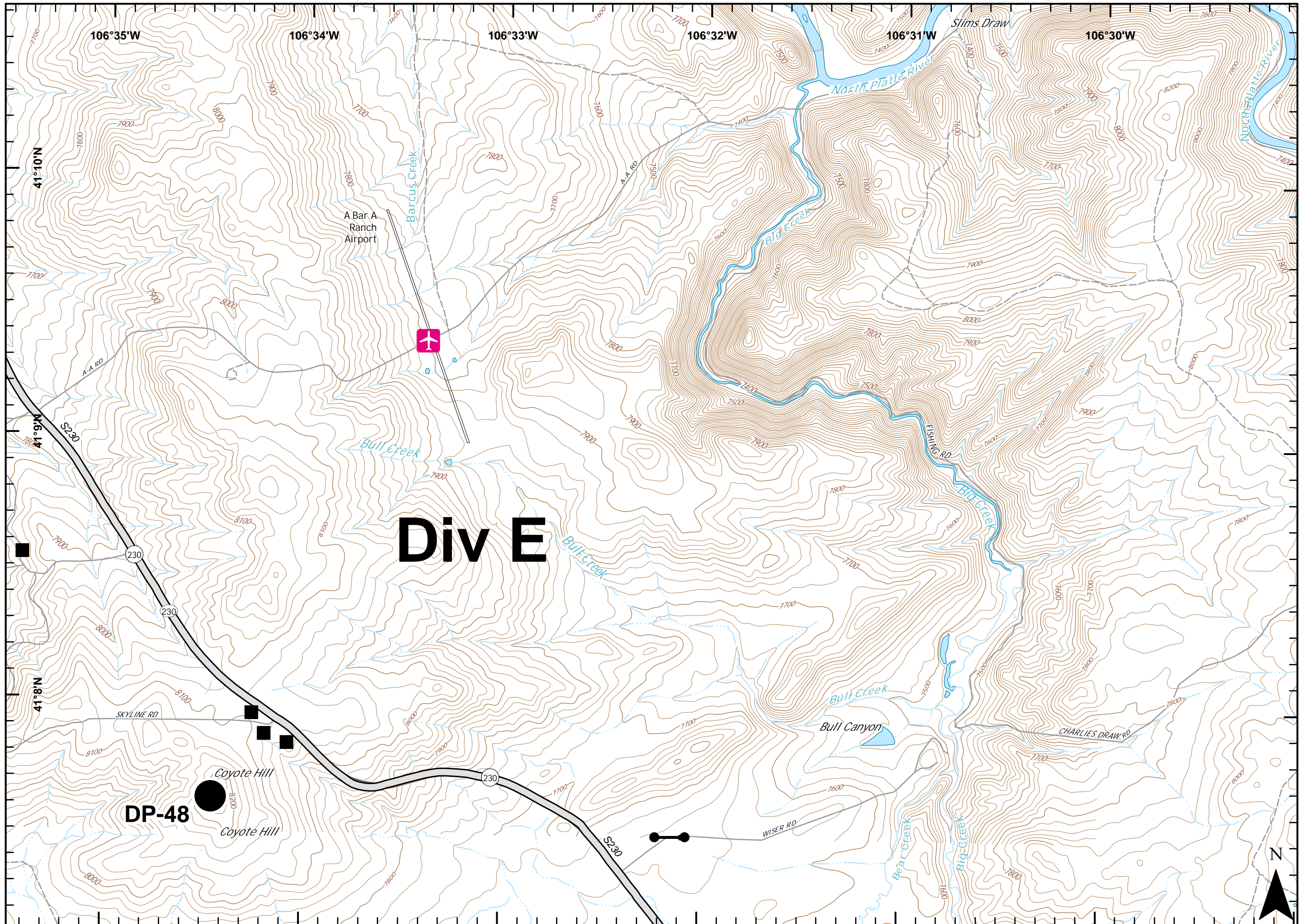
# RYAN FIRE IAP Map

WY-MRF-598  
Oct 2, 2018 - Day

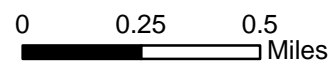
28,234 ac. as of 10/1, 1725 hrs

Page 2 of 17

		DIV E			
DIV B <sub>1</sub>		2	3		
DIV A <sub>1</sub>		5	6	7	
8	9	10	11	12	
13	14	15	16	17	DIV M
DIV W		DIV S			



- Structure
- Road
- ✈ Airstrip or Airport
- Drop Point
- ⊙ Gate
- ⚠ Value at Risk



NAD 83  
UTM Zone 13

Ruszkowski  
10/1/2018  
2219











# RYAN FIRE IAP Map WY-MRF-598 Oct 2, 2018 - Day

28,234 ac. as of 10/1, 1725 hrs

Page 4 of 17

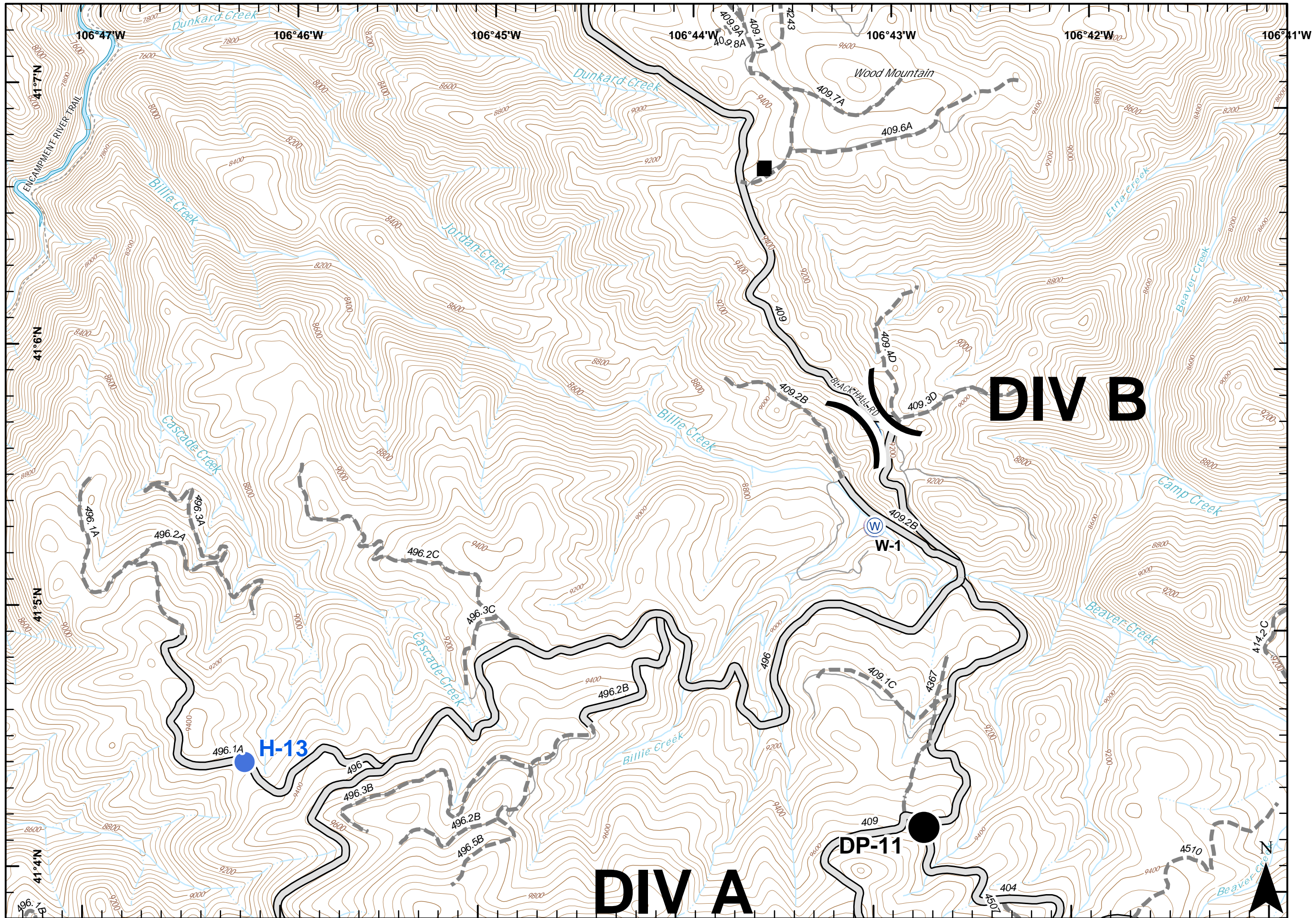
DIV B		DIV E	
1	2	3	4
5	6	7	8
9	10	11	12
13	14	15	16
DIV W		DIV S	

- Structure
- Road
- Road - High Clearance
- Drop Point
- Helispot
- Water Source
- Division Break

0 0.25 0.5 Miles

NAD 83  
UTM Zone 13

Ruszkowski  
10/1/2018  
2220







# RYAN FIRE IAP Map

WY-MRF-598

Oct 2, 2018 - Day

28,234 ac. as of 10/1, 1725 hrs

Page 5 of 17

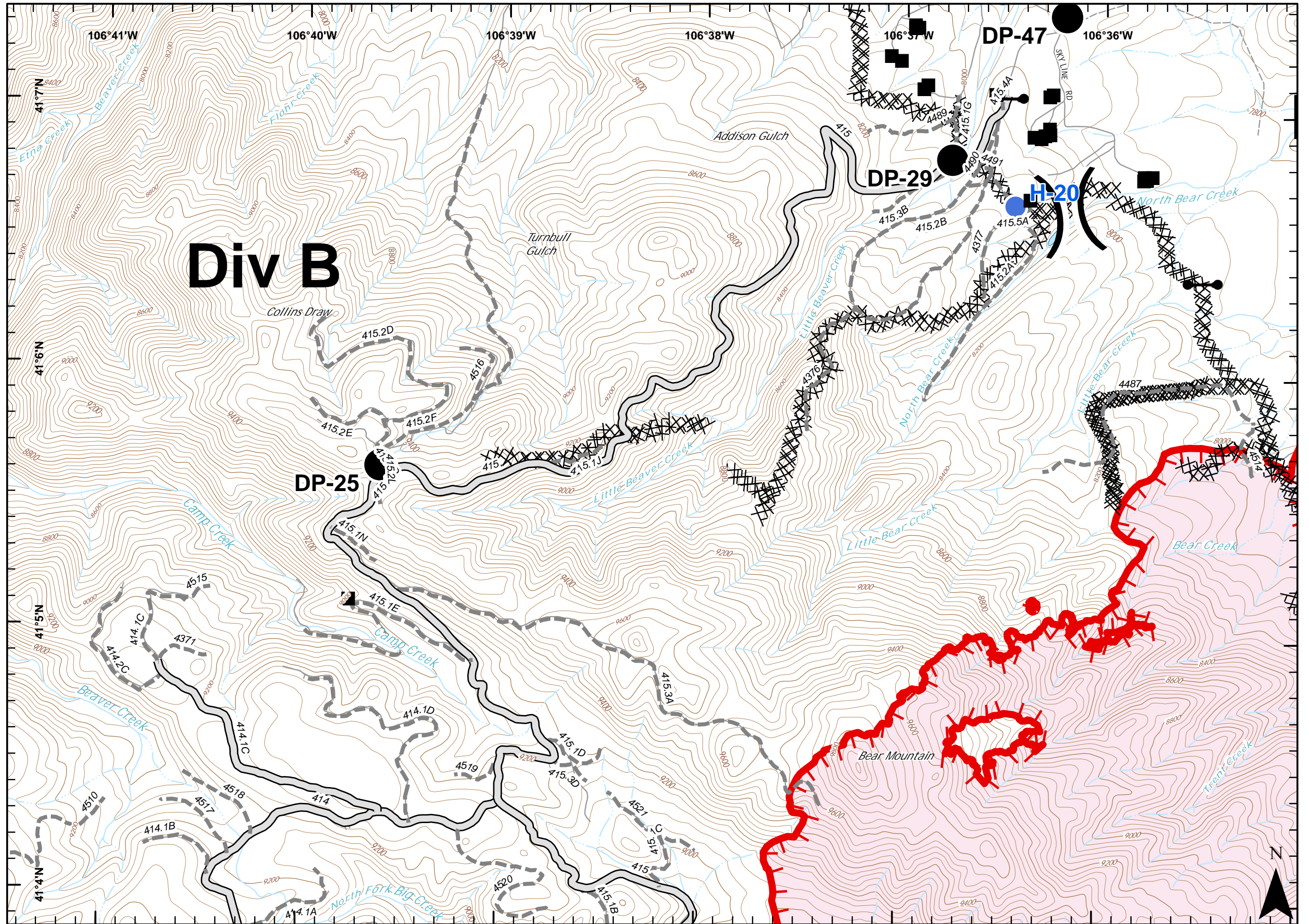
DIV B			DIV E		
	1	2	3	4	5
DIV A	6	7	8	9	10
11	12	13	14	15	16
DIV W	DIV S	DIV M			

- Structure
- Uncontrolled Fire Edge
- Completed Dozer Line
- Road
- Road - High Clearance
- Drop Point
- Gate
- Helispot
- Water Source
- Division Break

0 0.25 0.5 Miles

NAD 83  
UTM Zone 13

Ruszkowski  
10/1/2018  
2220







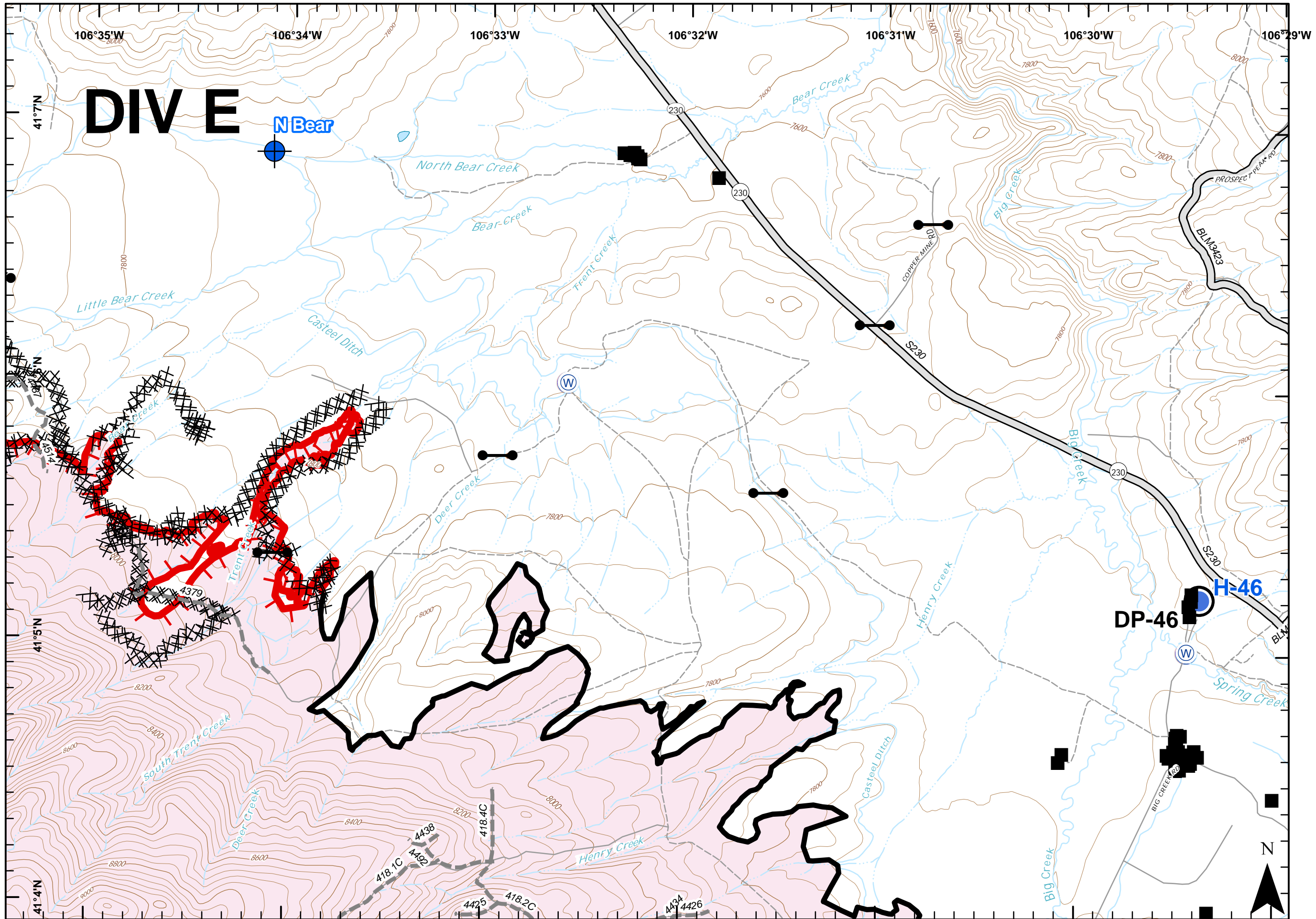
# RYAN FIRE IAP Map

WY-MRF-598  
Oct 2, 2018 - Day

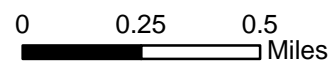
28,234 ac. as of 10/1, 1725 hrs

Page 6 of 17

		DIV E			
	DIV B1	2	3		
DIV A4	5	6	7		
8	9	10	11	12	
13	14	15	16	17	DIV M
DIV W	DIV S				



- Structure
- ▬ Uncontrolled Fire Edge
- ▬ Completed Line
- XXXX Completed Dozer Line
- ▬ Road
- ▬▬ Road - High Clearance
- Dip Site
- Drop Point
- Gate
- Helispot
- Ⓜ Water Source



NAD 83  
UTM Zone 13

Ruszkowski  
10/1/2018  
2220



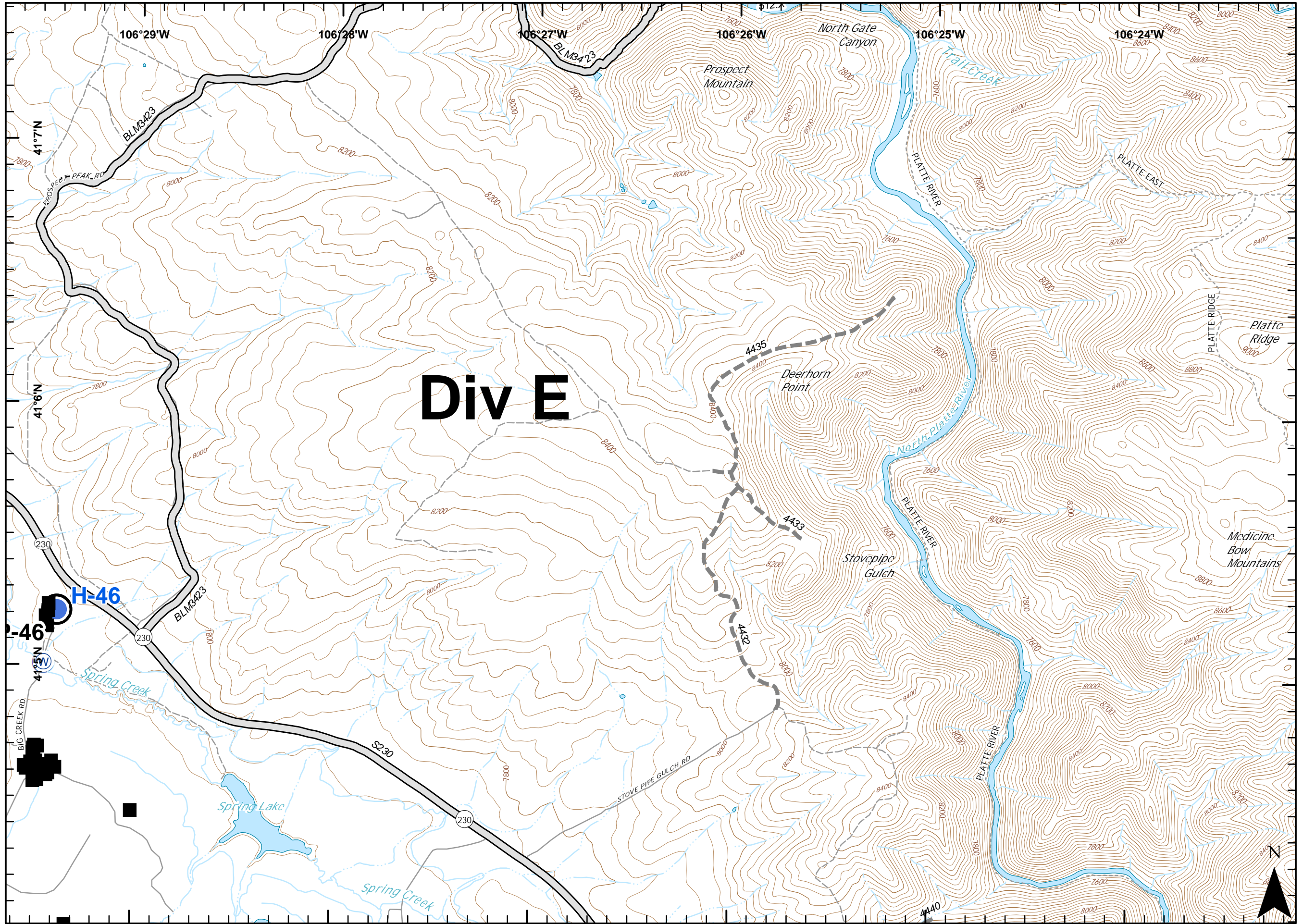


**RYAN FIRE**  
**IAP Map**  
 WY-MRF-598  
 Oct 2, 2018 - Day

28,234 ac. as of 10/1, 1725 hrs

Page 7 of 17

		DIV E		
		DIV B1	2	3
DIV A4	5	6	<b>7</b>	
8	9	10	11	12
13	14	15	16	17
DIV W	DIV S			DIV M

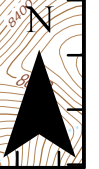


- Structure
- Road
- - - Road - High Clearance
- Drop Point
- Helispot
- Ⓜ Water Source

0 0.25 0.5 Miles

NAD 83  
 UTM Zone 13

Ruszkowski  
 10/1/2018  
 2220







**RYAN FIRE**  
**IAP Map**  
 WY-MRF-598  
 Oct 2, 2018 - Day

28,234 ac. as of 10/1, 1725 hrs

Page 8 of 17

		DIV E				
DIV B		1	2	3		
DIV A		4	5	6	7	
8	9	10	11	12		
DIV W		13	14	15	16	DIV M
		DIV S				



- Structure
- Road
- Road - High Clearance
- Water Source

0 0.25 0.5 Miles

NAD 83  
 UTM Zone 13

Ruszkowski  
 10/1/2018  
 2220



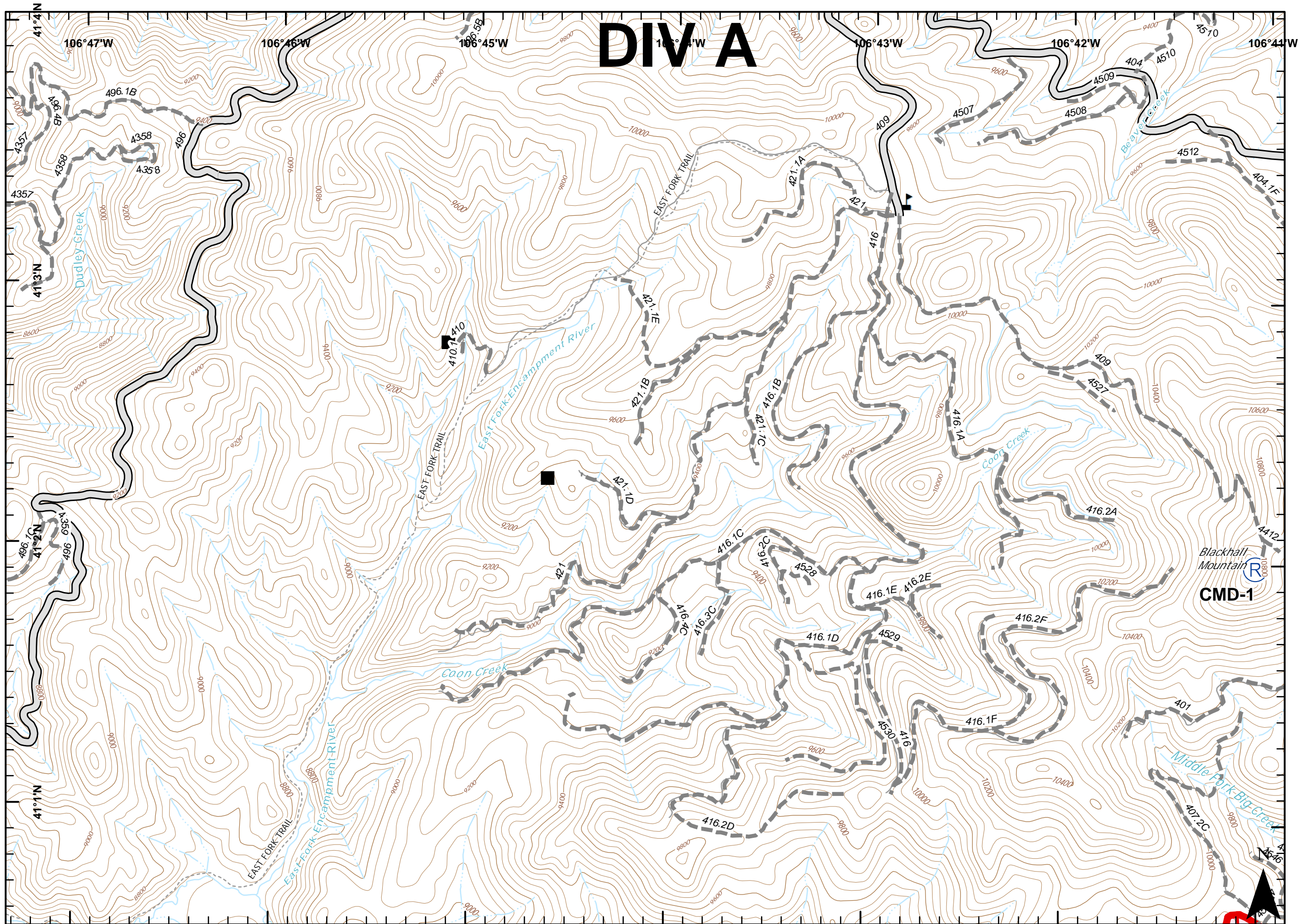


**RYAN FIRE**  
**IAP Map**  
 WY-MRF-598  
 Oct 2, 2018 - Day

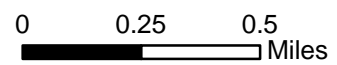
28,234 ac. as of 10/1, 1725 hrs

Page 9 of 17

		DIV E		
DIV B		1	2	3
DIV A		4	5	6
7	8	9	10	11
12	13	14	15	16
DIV W		DIV S		
		DIV M		



- Structure
- ▭ Uncontrolled Fire Edge
- Road
- Road - High Clearance
- Ⓡ Repeater
- ▲ Value at Risk



NAD 83  
 UTM Zone 13

Ruszkowski  
 10/1/2018  
 2220

Blackhall Mountain  
 CMD-1





# RYAN FIRE IAP Map WY-MRF-598 Oct 2, 2018 - Day

28,234 ac. as of 10/1, 1725 hrs

Page 10 of 17

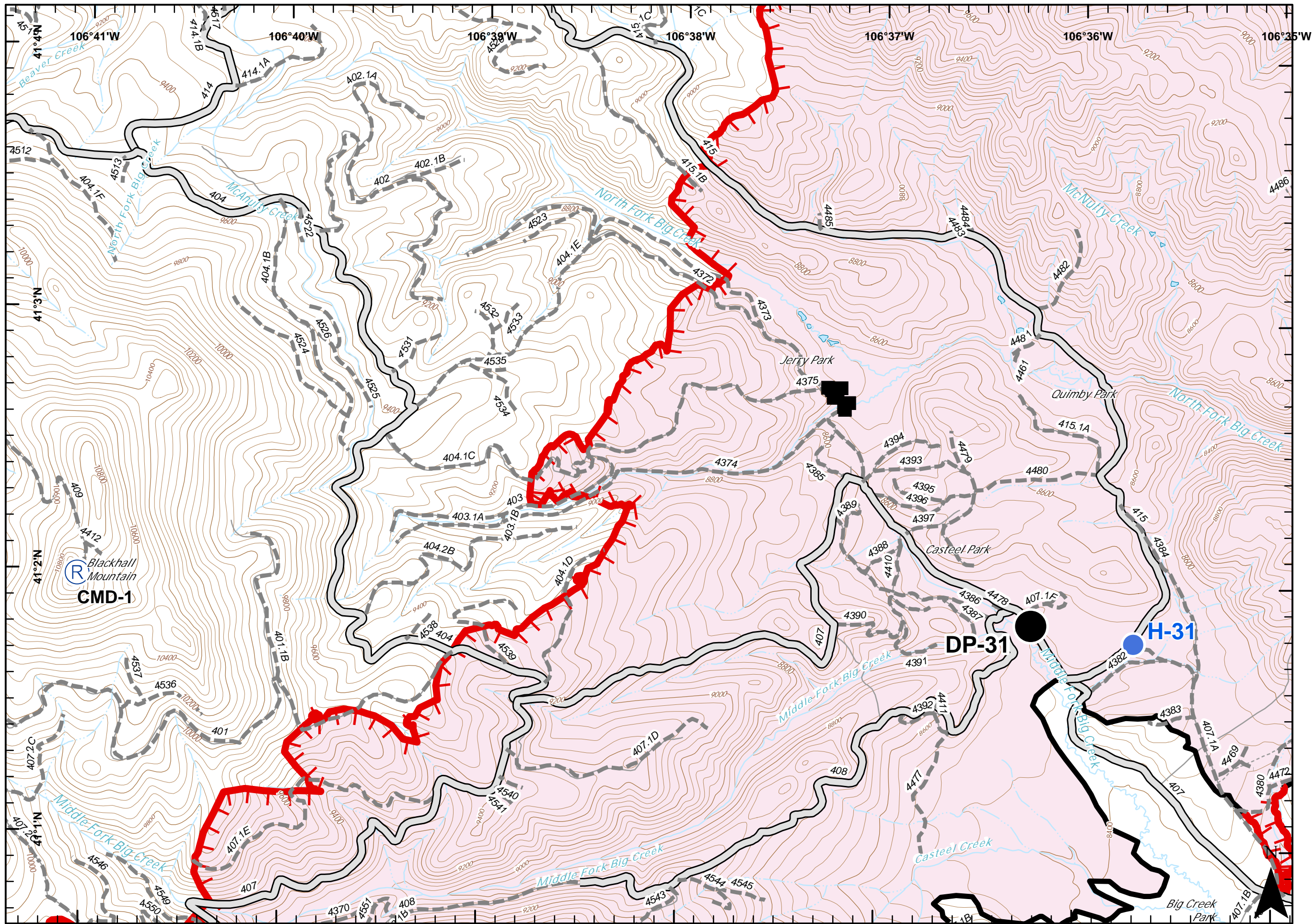
		DIV E				
		DIV B <sub>1</sub>	2	3		
DIV A <sub>4</sub>	4	5	6	7		
8	9	10	11	12		
13	14	15	16	17	DIV M	
DIV W		DIV S				

- Structure
- Uncontrolled Fire Edge
- Completed Line
- Road
- Road - High Clearance
- Drop Point
- Helispot
- Repeater
- Value at Risk

0 0.25 0.5 Miles

NAD 83  
UTM Zone 13

Ruszkowski  
10/1/2018  
2220







# RYAN FIRE IAP Map

WY-MRF-598  
Oct 2, 2018 - Day

28,234 ac. as of 10/1, 1725 hrs

Page 11 of 17

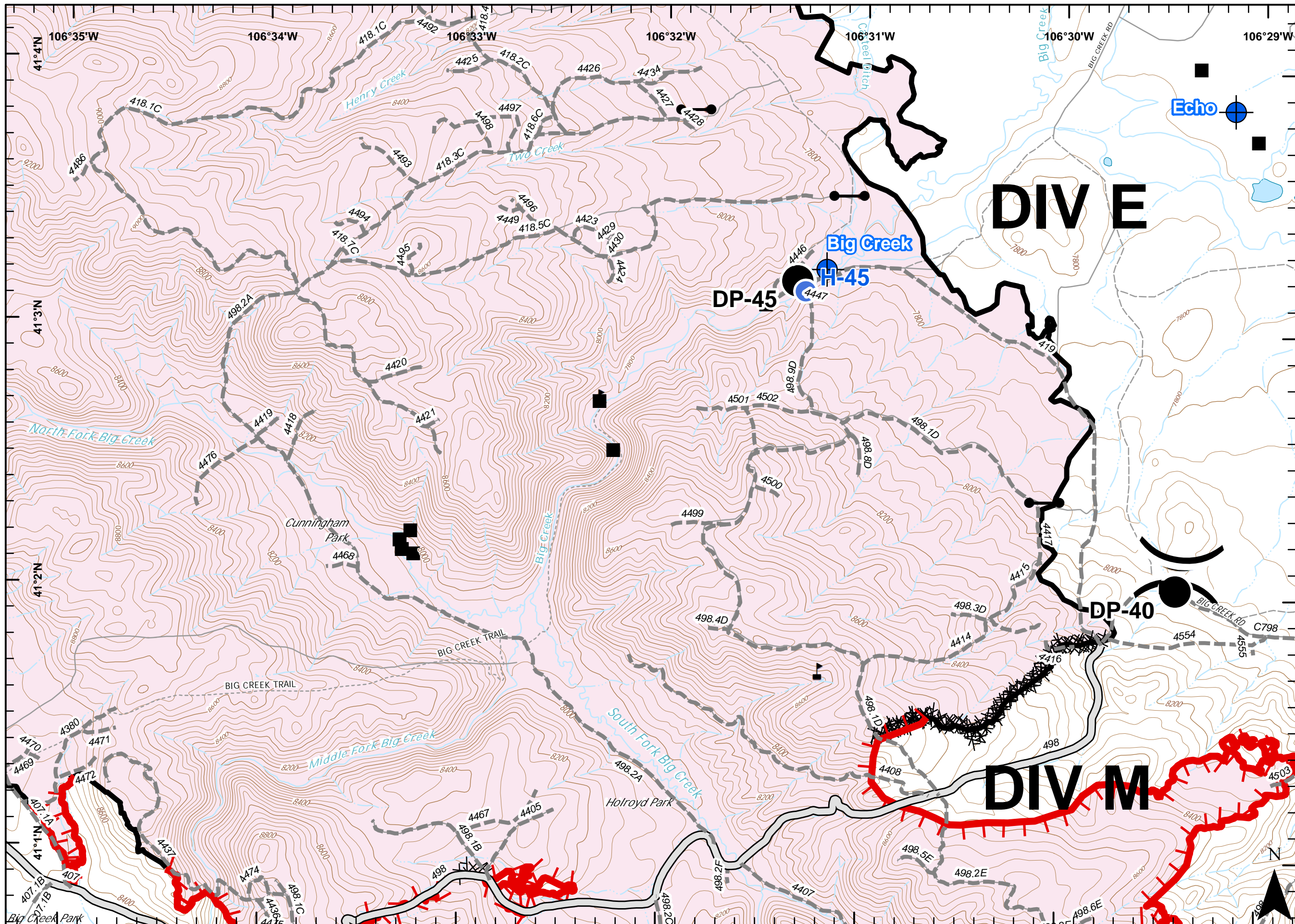
		DIV E		
	DIV B1	2	3	
DIV A4	5	6	7	
8	9	10	11	12
13	14	15	16	17
DIV W	DIV S		DIV M	

- Structure
- Uncontrolled Fire Edge
- Completed Line
- Completed Dozer Line
- Road
- Road - High Clearance
- Dip Site
- Drop Point
- Gate
- Helispot
- Water Source
- Value at Risk
- Division Break

0 0.25 0.5 Miles

NAD 83  
UTM Zone 13

Ruszkowski  
10/1/2018  
2220





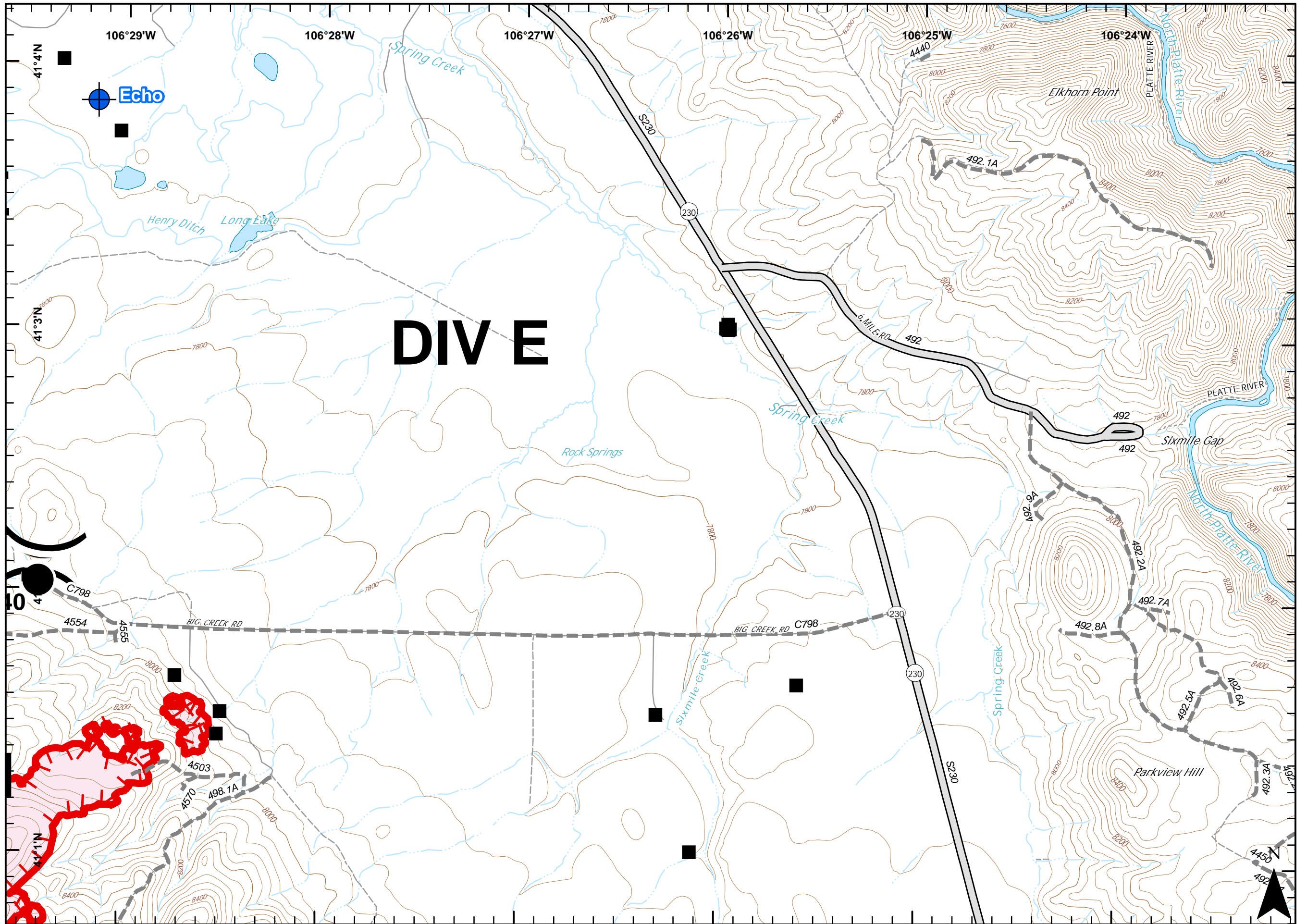


**RYAN FIRE**  
**IAP Map**  
 WY-MRF-598  
 Oct 2, 2018 - Day

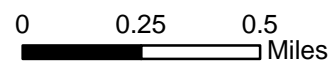
28,234 ac. as of 10/1, 1725 hrs

Page 12 of 17

			DIV E		
DIV B		1	2	3	
DIV A	4	5	6	7	
	8	9	10	11	12
DIV W	13	14	15	16	17
	DIV S		DIV M		



- Structure
- ▬ Uncontrolled Fire Edge
- ▬ Road
- ▬ Road - High Clearance
- ⊕ Dip Site
- Drop Point
- ) ( Division Break



NAD 83  
 UTM Zone 13

Ruszkowski 10/1/2018 2221
---------------------------------



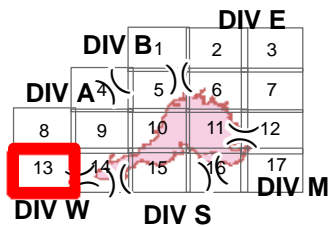


# RYAN FIRE IAP Map

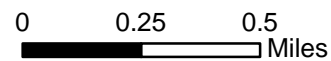
WY-MRF-598  
Oct 2, 2018 - Day

28,234 ac. as of 10/1, 1725 hrs

Page 13 of 17

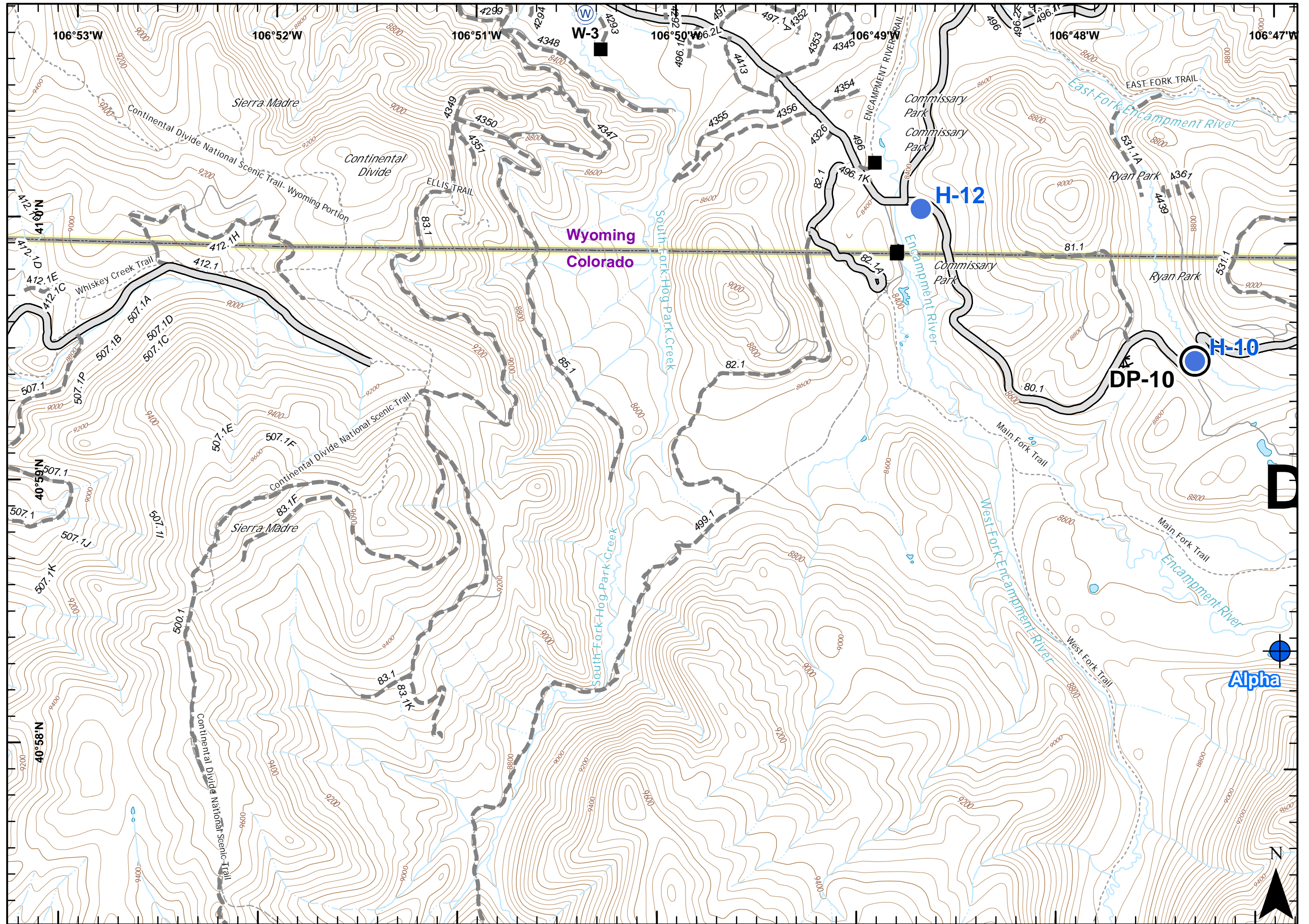


- Structure
- Completed Hand Line
- Road
- Road - High Clearance
- Dip Site
- Drop Point
- Helispot
- Water Source
- Value at Risk



NAD 83  
UTM Zone 13

Ruszkowski  
10/1/2018  
2221







# RYAN FIRE

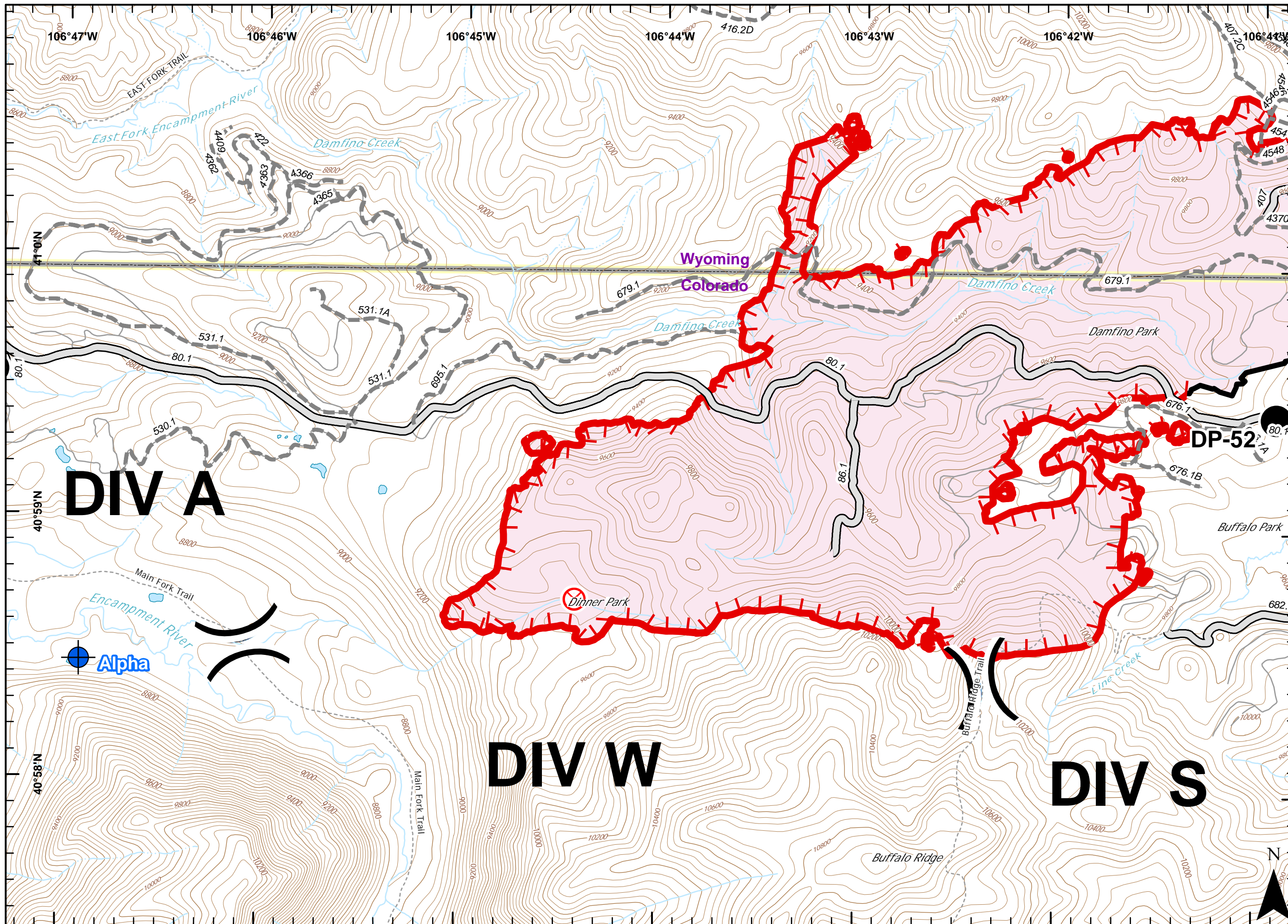
## IAP Map

WY-MRF-598  
Oct 2, 2018 - Day

28,234 ac. as of 10/1, 1725 hrs

Page 14 of 17

		DIV E		
		DIV B <sub>1</sub>	2	3
DIV A <sub>4</sub>	5	6	7	
8	9	10	11	12
13	14	15	16	17
DIV W	DIV S			DIV M



- Uncontrolled Fire Edge
- Completed Line
- Road
- Road - High Clearance
- Dip Site
- Drop Point
- Fire Origin
- Helispot
- Division Break

0 0.25 0.5 Miles

NAD 83  
UTM Zone 13

Ruszkowski  
10/1/2018  
2221





# RYAN FIRE IAP Map

WY-MRF-598  
Oct 2, 2018 - Day

28,234 ac. as of 10/1, 1725 hrs

Page 15 of 17

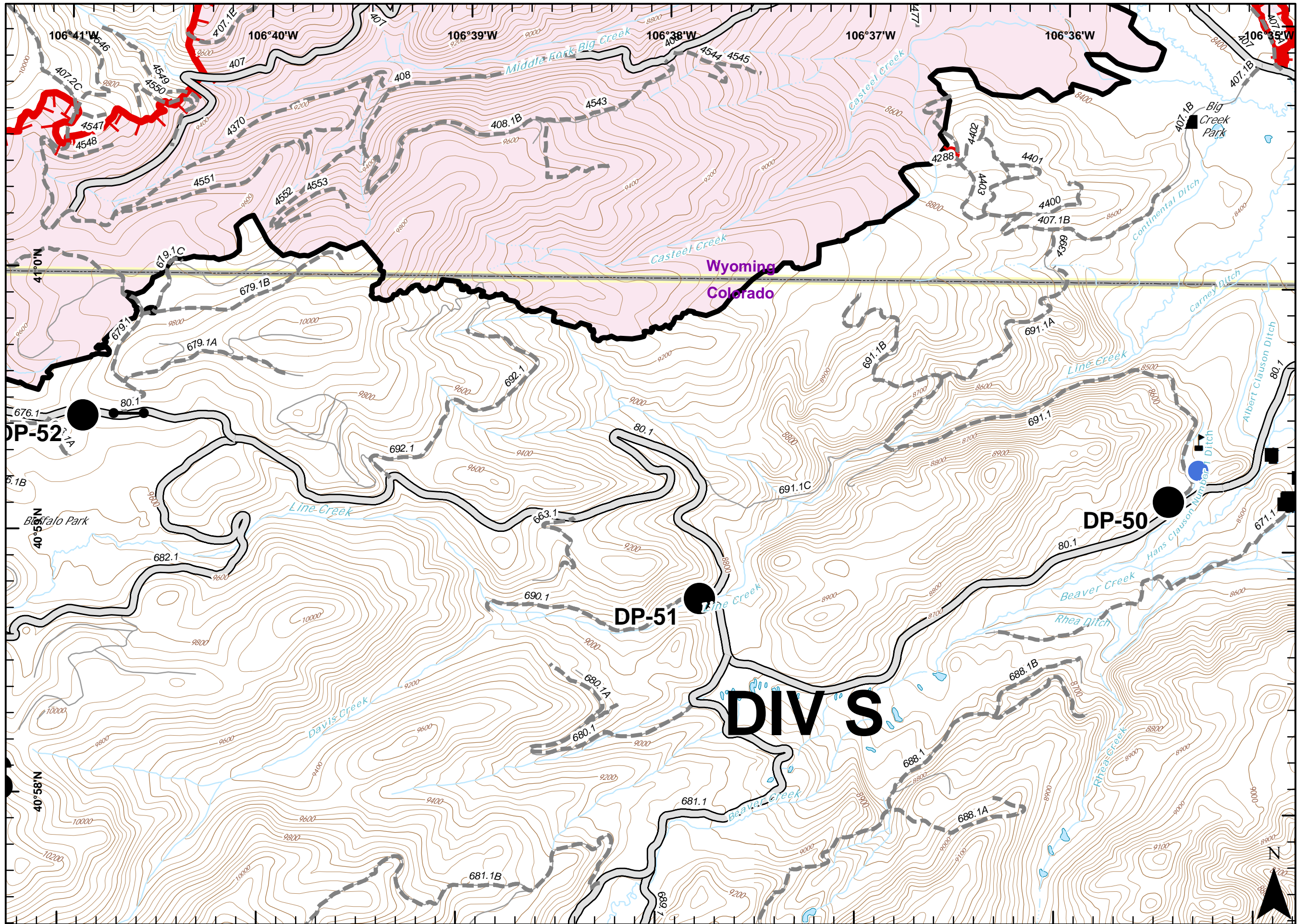
			DIV E		
DIV B		1	2	3	
DIV A	4	5	6	7	
8	9	10	11	12	
13	14	15	16	17	DIV M
DIV W		DIV S			

- Structure
- Uncontrolled Fire Edge
- Completed Line
- Road
- Road - High Clearance
- Drop Point
- Gate
- Helispot
- Water Source
- Value at Risk

0 0.25 0.5 Miles

NAD 83  
UTM Zone 13

Ruszkowski  
10/1/2018  
2221







# RYAN FIRE IAP Map

WY-MRF-598  
Oct 2, 2018 - Day

28,234 ac. as of 10/1, 1725 hrs

Page 16 of 17

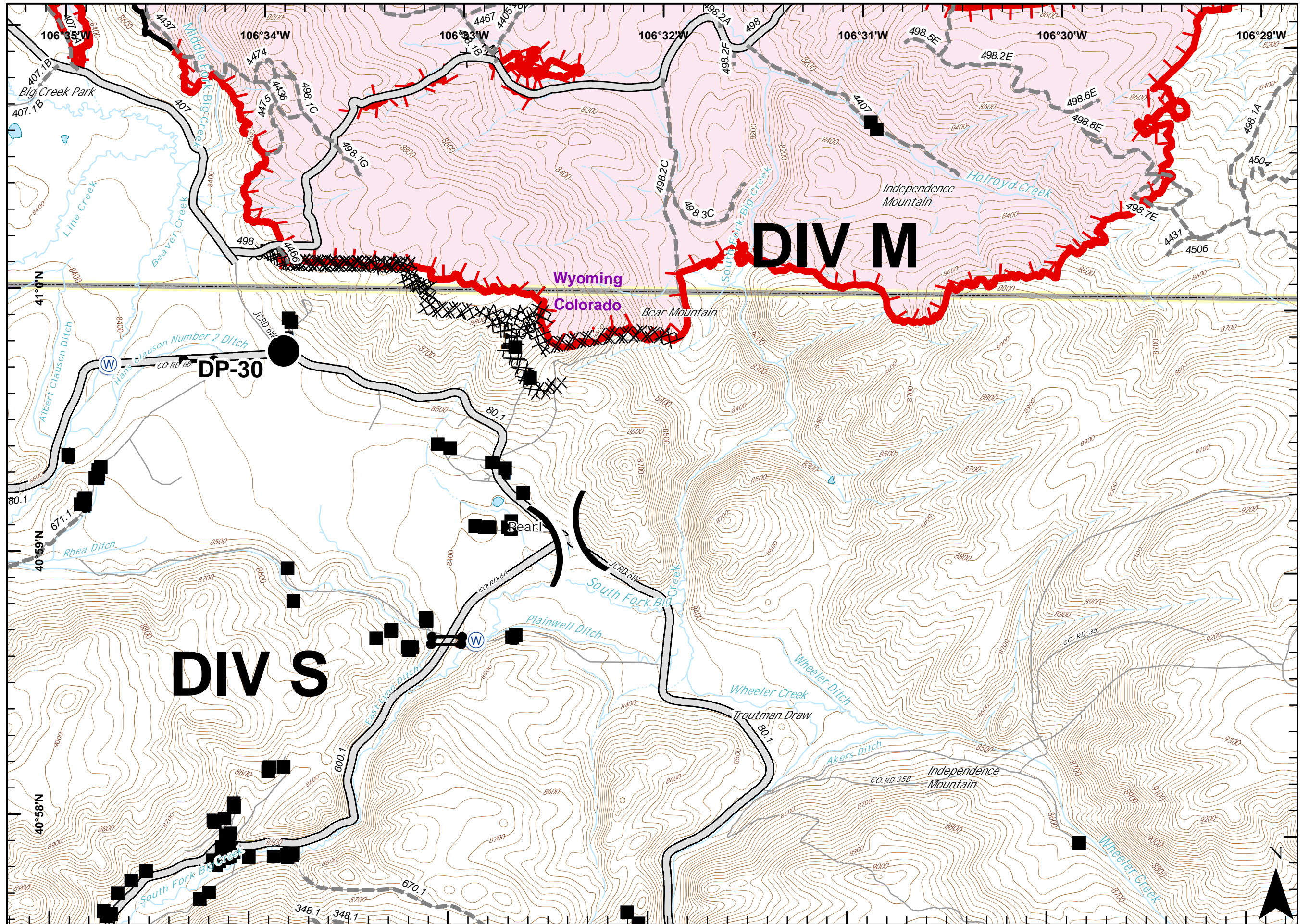
		DIV E		
DIV B		1	2	3
DIV A	4	5	6	7
8	9	10	11	12
13	14	15	16	17
DIV W		DIV S		DIV M

- Structure
- Uncontrolled Fire Edge
- Completed Line
- Completed Dozer Line
- Road
- Road - High Clearance
- Drop Point
- Gate
- Water Source
- Value at Risk
- Division Break

0 0.25 0.5 Miles

NAD 83  
UTM Zone 13

Ruszkowski  
10/1/2018  
2221







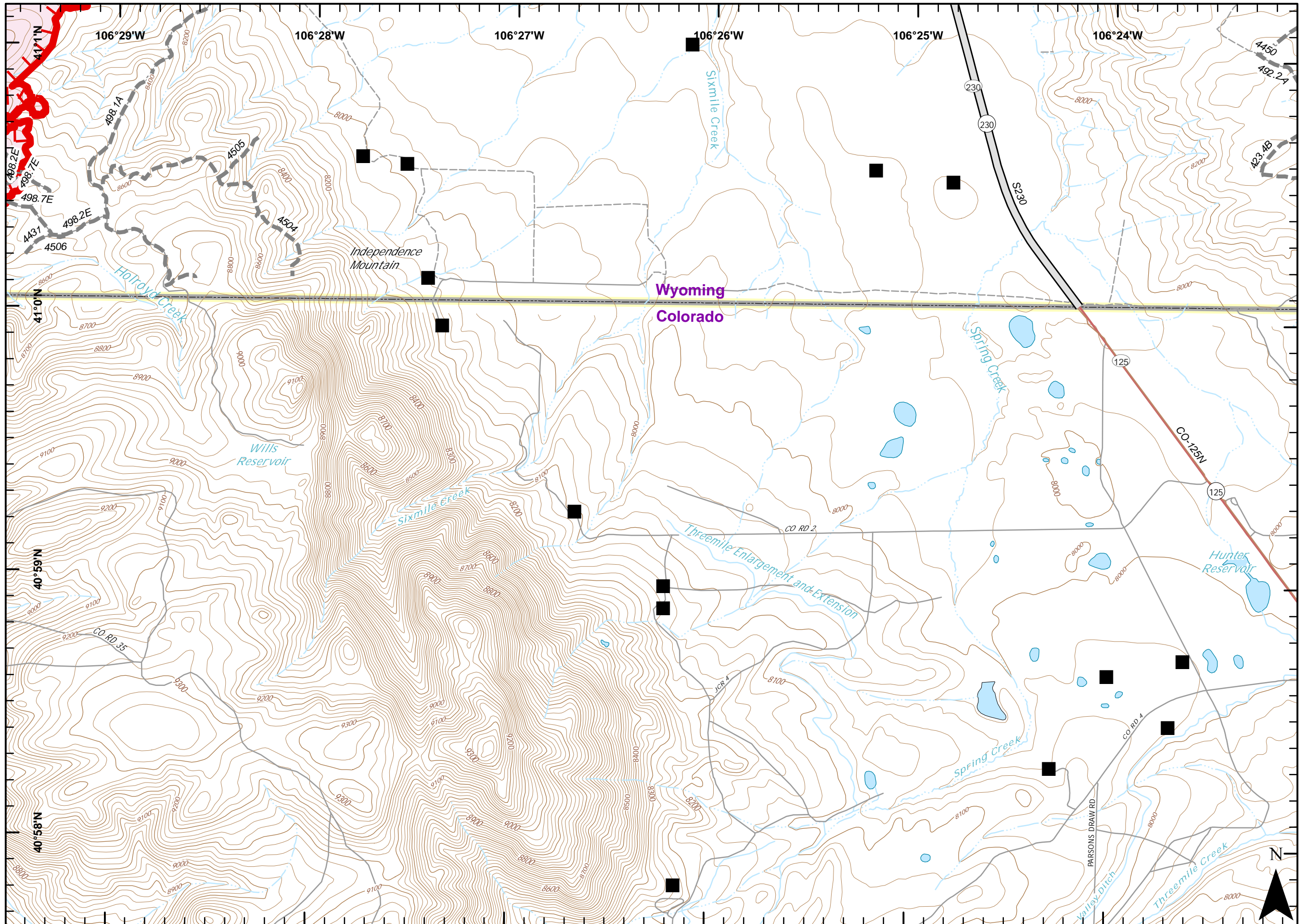
# RYAN FIRE IAP Map

WY-MRF-598  
Oct 2, 2018 - Day

28,234 ac. as of 10/1, 1725 hrs

Page 17 of 17

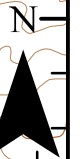
		DIV E			
DIV B		1	2	3	
DIV A		4	5	6	7
8	9	10	11	12	
13	14	15	16	17	
DIV W		DIV S			



- Structure
  - ▬ Uncontrolled Fire Edge
  - ▬ Road
  - ▬ Road - High Clearance
- 0 0.25 0.5 Miles

NAD 83  
UTM Zone 13

Ruszkowski  
10/1/2018  
2221







# RYAN FIRE Transportation

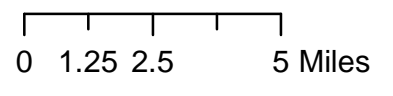
WY-MRF-598  
Oct. 2, 2018  
Day

28,234 acres  
as of 10/1 1725 hrs

## Legend

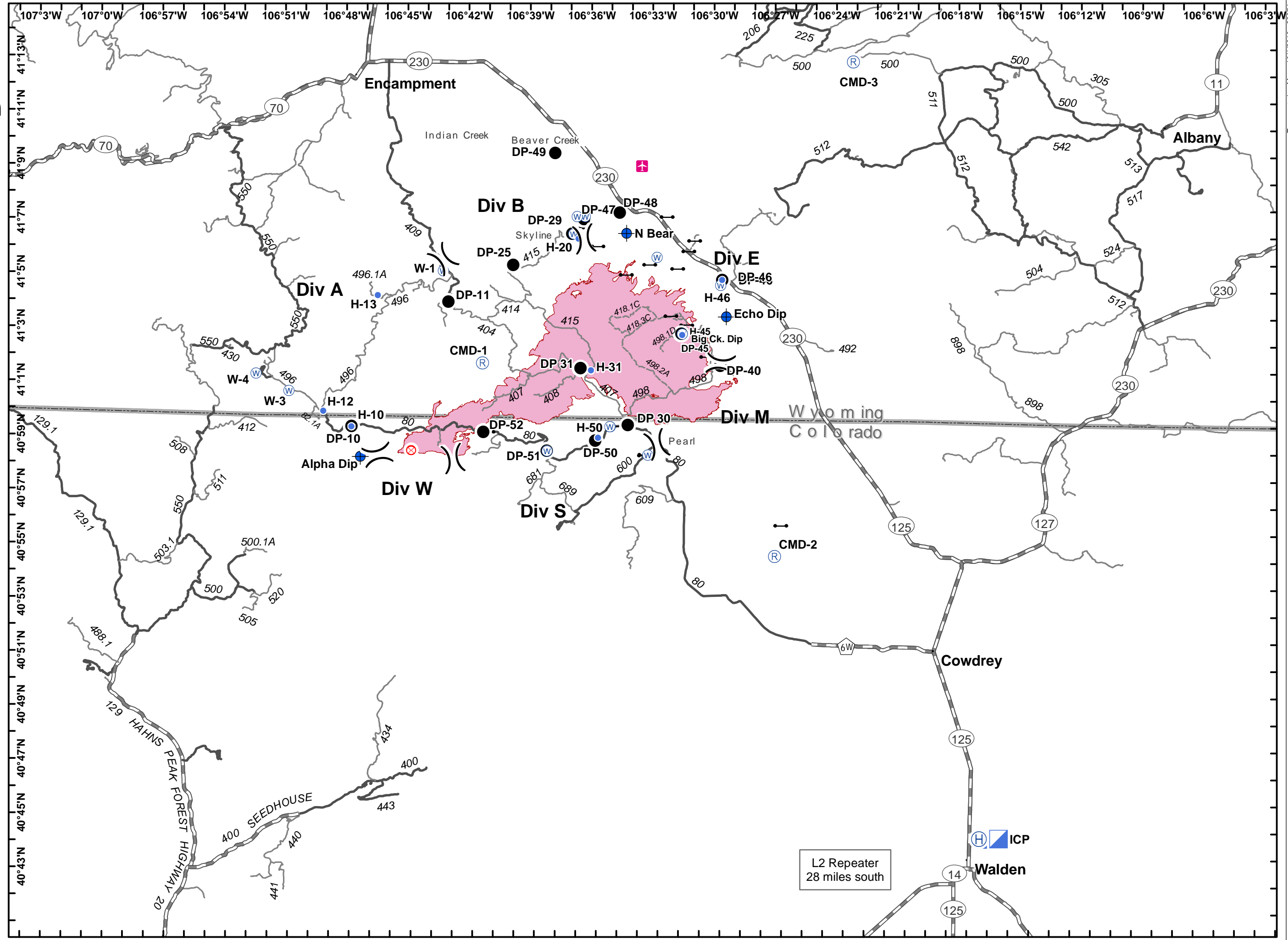
- Town Locations
- Airstrip or Airport
- Dip Site
- Drop Point
- Fire Origin
- Gate
- Helibase
- Helispot
- Incident Command Post
- Repeater
- Water Source
- Division Break
- Wildfire Perimeter

- ### Roads
- High Clearance Route Identified For Use
  - Gravel Road, Suitable for Passenger Car
  - Gravel Road, Moderate Comfort Level
  - Highway



EVakili  
10/1/18  
2207

NAD 83  
UTM Zone 13



Transportation Map - 10/1/2018 - 2207 hrs.

Transportation Map - 10/1/2018 - 2207 hrs.