



RYAN FIRE Transportation

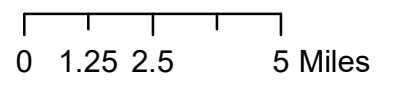
WY-MRF-598
Oct. 2, 2018
Day

28,234 acres
as of 10/1 1725 hrs

Legend

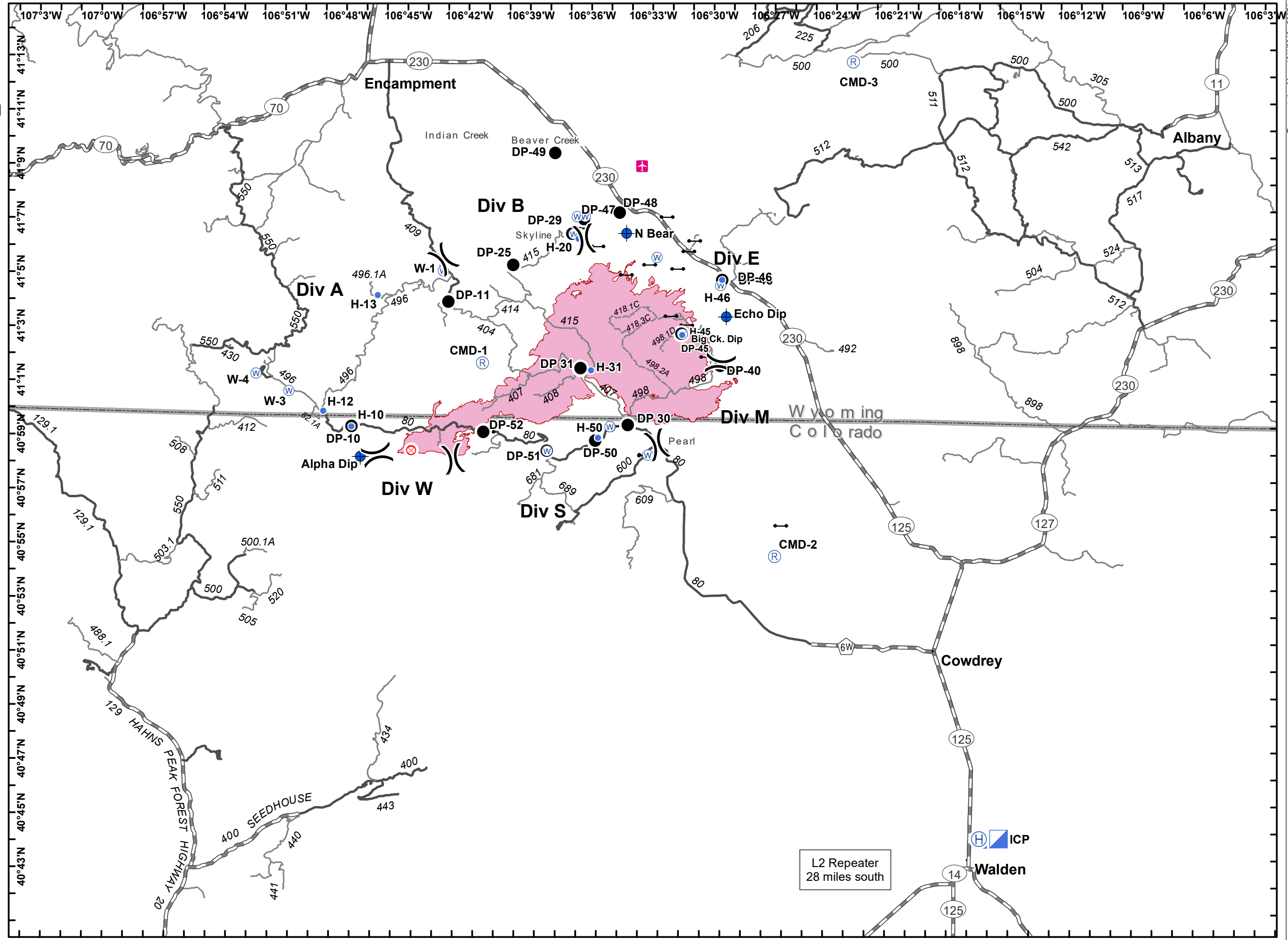
- Town Locations
- Airstrip or Airport
- Dip Site
- Drop Point
- Fire Origin
- Gate
- Helibase
- Helispot
- Incident Command Post
- Repeater
- Water Source
- Division Break
- Wildfire Perimeter

- ### Roads
- High Clearance Route Identified For Use
 - Gravel Road, Suitable for Passenger Car
 - Gravel Road, Moderate Comfort Level
 - Highway



EVakili
10/1/18
2207

NAD 83
UTM Zone 13



Transportation Map - 10/1/2018 - 2207 hrs

Transportation Map - 10/1/2018 - 2207 hrs