



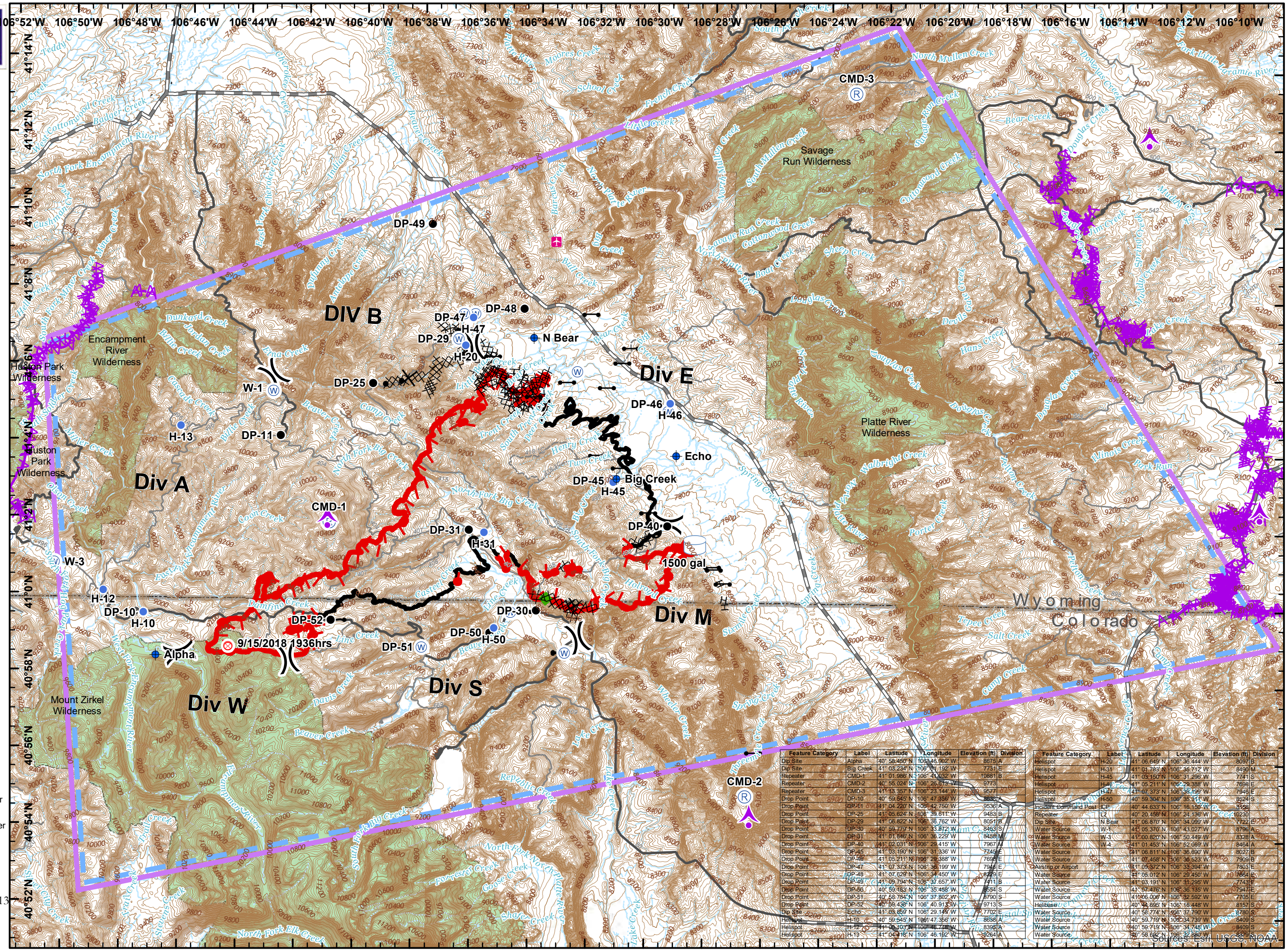
# RYAN FIRE Pilot Map

WY-MRF-000598  
Oct 4, 2018

28,409 acres  
as of 10/1/18 2200 hrs

- Legend**
- Aerial Hazard
  - Aerial Hazard
  - Uncontrolled Fire Edge
  - Completed Line
  - Completed Dozer Line
  - Completed Hand Line
  - Road as Completed Line
  - Proposed Dozer Line
  - Air Tanker Retardant
  - Escape Route
  - Other
  - Airstrip or Airport
  - Dip Site
  - Drop Point
  - Fire Origin
  - Gate
  - Helispot
  - Repeater
  - Water Source
  - Water Tank
  - Division Break
  - TFR 8/7064 9-23-18
  - Wilderness

- Roads**
- High Clearance Route Identified For Use
  - Gravel Road, Suitable for Passenger Car
  - Gravel Road, Moderate Comfort Level
  - Highway
- NAD 83  
UTM Zone 13  
EVakili  
10/3/2018  
2139
- Miles  
0 1 2



Feature Category	Label	Latitude	Longitude	Elevation (ft)	Division
Drop Point	Alpha	40° 58.450' N	106° 46.902' W	8675 A	
Dip Site	Big Creek	41° 03.234' N	106° 34.192' W	7731 E	
Repeater	CMD-1	41° 01.986' N	106° 41.032' W	10681 B	
Repeater	CMD-2	40° 55.024' N	106° 26.619' W	9773	
Repeater	CMD-3	41° 13.357' N	106° 23.144' W	8636 A	
Drop Point	DP-10	40° 59.545' N	106° 47.356' W	8636 A	
Drop Point	DP-11	41° 04.220' N	106° 42.750' W	9536 A	
Drop Point	DP-25	41° 05.624' N	106° 39.611' W	9483 B	
Drop Point	DP-29	41° 06.822' N	106° 36.762' W	8051 B	
Drop Point	DP-30	40° 59.779' N	106° 33.872' W	8453 S	
Drop Point	DP-31	41° 01.846' N	106° 36.229' W	9488 M	
Drop Point	DP-40	41° 02.031' N	106° 29.415' W	7967 M	
Drop Point	DP-45	41° 03.190' N	106° 31.336' W	7745 E	
Drop Point	DP-46	41° 05.211' N	106° 28.388' W	7699 E	
Drop Point	DP-47	41° 07.373' N	106° 36.199' W	7945 E	
Drop Point	DP-48	41° 07.629' N	106° 34.450' W	8229 E	
Drop Point	DP-49	41° 09.794' N	106° 37.657' W	7711 B	
Drop Point	DP-50	40° 59.483' N	106° 35.488' W	8554 S	
Drop Point	DP-51	40° 58.784' N	106° 37.802' W	8790 S	
Drop Point	DP-52	40° 59.438' N	106° 40.913' W	8713 S	
Dip Site	Echo	41° 03.858' N	106° 29.148' W	7770 E	
Helispot	H-10	40° 59.545' N	106° 47.356' W	8636 A	
Helispot	H-12	41° 01.453' N	106° 32.748' W	8408 S	
Helispot	H-13	41° 04.118' N	106° 34.748' W	8408 S	
Helispot	H-20	41° 05.624' N	106° 39.611' W	9483 B	
Helispot	H-31	41° 01.846' N	106° 36.229' W	9488 M	
Helispot	H-31	41° 01.846' N	106° 36.229' W	9488 M	
Helispot	H-45	41° 03.190' N	106° 31.336' W	7745 E	
Helispot	H-46	41° 05.211' N	106° 28.388' W	7699 E	
Helispot	H-47	41° 07.373' N	106° 36.199' W	7945 E	
Helispot	H-50	40° 59.304' N	106° 35.311' W	8524 S	
Incident Command Post	ICP	40° 44.633' N	106° 16.130' W	8198	
Repeater	L2	40° 44.633' N	106° 24.136' W	10230	
Dip Site	N Bear	41° 06.870' N	106° 34.099' W	7722 E	
Water Source	W-1	41° 05.370' N	106° 43.027' W	8796 A	
Water Source	W-3	41° 00.620' N	106° 50.449' W	8338 A	
Water Source	W-4	41° 01.453' N	106° 52.089' W	8464 A	
Water Source	W-5	41° 06.811' N	106° 36.690' W	8027 B	
Water Source	W-6	41° 07.458' N	106° 36.523' W	7908 B	
Airstrip or Airport	ACE	41° 05.372' N	106° 33.394' W	7803 E	
Water Source	W-7	41° 05.012' N	106° 29.450' W	10764 E	
Water Source	W-8	41° 03.191' N	106° 31.295' W	7743 E	
Water Source	W-9	41° 07.476' N	106° 36.135' W	7943 E	
Water Source	W-10	41° 06.649' N	106° 32.592' W	7705 E	
Helispot	S	40° 58.895' N	106° 18.448' W	8150 S	
Water Source	W-11	40° 58.774' N	106° 37.790' W	8790 S	
Water Source	W-12	40° 59.749' N	106° 34.748' W	8408 S	
Water Source	W-13	40° 58.748' N	106° 34.748' W	8408 S	
Water Source	W-14	40° 58.682' N	106° 32.880' W	8239 S	