



RYAN FIRE Air Operations Map

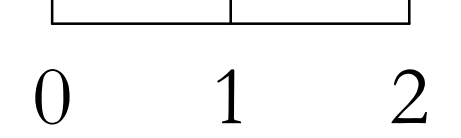
WY-MRF-000598
Oct. 4, 2018

28,409 acres 10/1/18 2200hrs

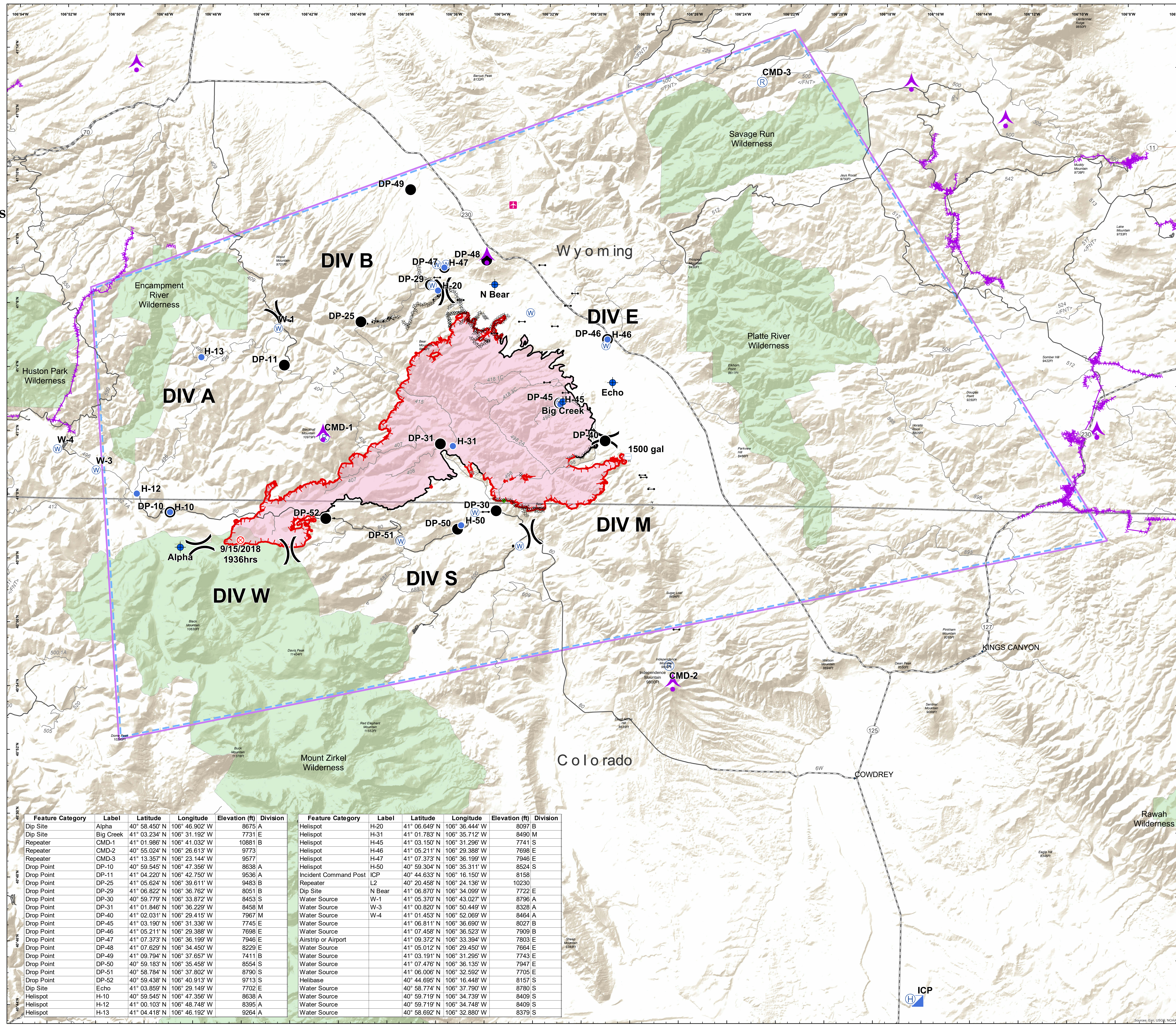
- Legend**
- Aerial Hazard Point
 - Aerial Hazard Line
 - Airstrip or Airport
 - Dip Site
 - Drop Point
 - Fire Origin
 - Gate
 - Helibase
 - Helispot
 - Incident Command Post
 - Repeater
 - Water Source
 - Water Tank
 - Division Break
 - Uncontrolled Fire Edge
 - Completed Line
 - Completed Dozer Line
 - Completed Hand Line
 - Road as Completed Line
 - Proposed Dozer Line
 - Air Tanker Retardant
 - Escape Route
 - Other
 - TFR 8/7064 9-23-18
 - Wildfire Perimeter
 - Wilderness

- Roads**
- High Clearance Route Identified For Use
 - Gravel Road, Suitable for Passenger Car
 - Gravel Road, Moderate Comfort Level
 - Highway

Miles



EVakili
10/3/2018
2124



Feature Category	Label	Latitude	Longitude	Elevation (ft)	Division
Dip Site	Alpha	40° 58.450' N	106° 46.902' W	8675 A	
Dip Site	Big Creek	41° 03.234' N	106° 31.192' W	7731 E	
Repeater	CMD-1	41° 01.986' N	106° 41.032' W	10881 B	
Repeater	CMD-2	40° 55.024' N	106° 26.613' W	9773	
Repeater	CMD-3	41° 13.357' N	106° 23.144' W	9577	
Drop Point	DP-10	40° 59.545' N	106° 47.356' W	8638 A	
Drop Point	DP-11	41° 04.220' N	106° 42.750' W	9536 A	
Drop Point	DP-25	41° 05.624' N	106° 39.611' W	9483 B	
Drop Point	DP-29	41° 06.822' N	106° 36.762' W	8051 B	
Drop Point	DP-30	40° 59.779' N	106° 33.872' W	8453 S	
Drop Point	DP-31	41° 01.846' N	106° 36.229' W	8458 M	
Drop Point	DP-40	41° 02.031' N	106° 29.415' W	7967 M	
Drop Point	DP-45	41° 03.190' N	106° 31.336' W	7745 E	
Drop Point	DP-46	41° 05.211' N	106° 29.388' W	7698 E	
Drop Point	DP-47	41° 07.373' N	106° 36.199' W	7946 E	
Drop Point	DP-48	41° 07.629' N	106° 34.450' W	8229 E	
Drop Point	DP-49	41° 09.794' N	106° 37.657' W	7411 B	
Drop Point	DP-50	40° 59.183' N	106° 35.458' W	8554 S	
Drop Point	DP-51	40° 58.784' N	106° 37.802' W	8790 S	
Drop Point	DP-52	40° 59.438' N	106° 40.913' W	9713 S	
Dip Site	Echo	41° 03.859' N	106° 29.149' W	7702 E	
Helispot	H-10	40° 59.545' N	106° 47.356' W	8638 A	
Helispot	H-12	41° 00.103' N	106° 48.748' W	8395 A	
Helispot	H-13	41° 04.418' N	106° 46.192' W	9264 A	

Feature Category	Label	Latitude	Longitude	Elevation (ft)	Division
Helispot	H-20	41° 06.649' N	106° 36.444' W	8097 B	
Helispot	H-31	41° 01.783' N	106° 35.712' W	8490 M	
Helispot	H-45	41° 03.150' N	106° 31.296' W	7741 S	
Helispot	H-46	41° 05.211' N	106° 29.388' W	7698 E	
Helispot	H-47	41° 07.373' N	106° 36.199' W	7946 E	
Helispot	H-50	40° 59.304' N	106° 35.311' W	8524 S	
Incident Command Post	ICP	40° 44.633' N	106° 16.150' W	8158	
Repeater	L2	40° 20.458' N	106° 24.136' W	10230	
Dip Site	N Bear	41° 06.870' N	106° 34.099' W	7722 E	
Water Source	W-1	41° 05.370' N	106° 43.027' W	8796 A	
Water Source	W-3	41° 00.820' N	106° 50.449' W	8328 A	
Water Source	W-4	41° 01.453' N	106° 52.069' W	8464 A	
Water Source		41° 06.811' N	106° 36.690' W	8027 B	
Water Source		41° 07.458' N	106° 36.523' W	7909 B	
Water Source		41° 09.372' N	106° 33.394' W	7803 E	
Water Source		41° 05.012' N	106° 29.450' W	7664 E	
Water Source		41° 03.191' N	106° 31.295' W	7743 E	
Water Source		41° 07.476' N	106° 36.135' W	7947 E	
Water Source		41° 06.006' N	106° 32.592' W	7705 E	
Helibase		40° 44.695' N	106° 16.448' W	8157 S	
Water Source		40° 58.774' N	106° 37.790' W	8780 S	
Water Source		40° 59.719' N	106° 34.739' W	8409 S	
Water Source		40° 59.719' N	106° 34.748' W	8409 S	
Water Source		40° 58.692' N	106° 32.680' W	8379 S	