



RYAN FIRE Transportation

WY-MRF-598
Oct. 6, 2018

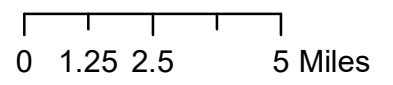
28,584 acres
as of 10/3 2030 hrs

Legend

- Airstrip or Airport
- Dip Site
- Drop Point
- Fire Origin
- Gate
- Helibase
- Helispot
- Incident Command Post
- Repeater
- Water Source
- Division Break
- Wildfire Perimeter

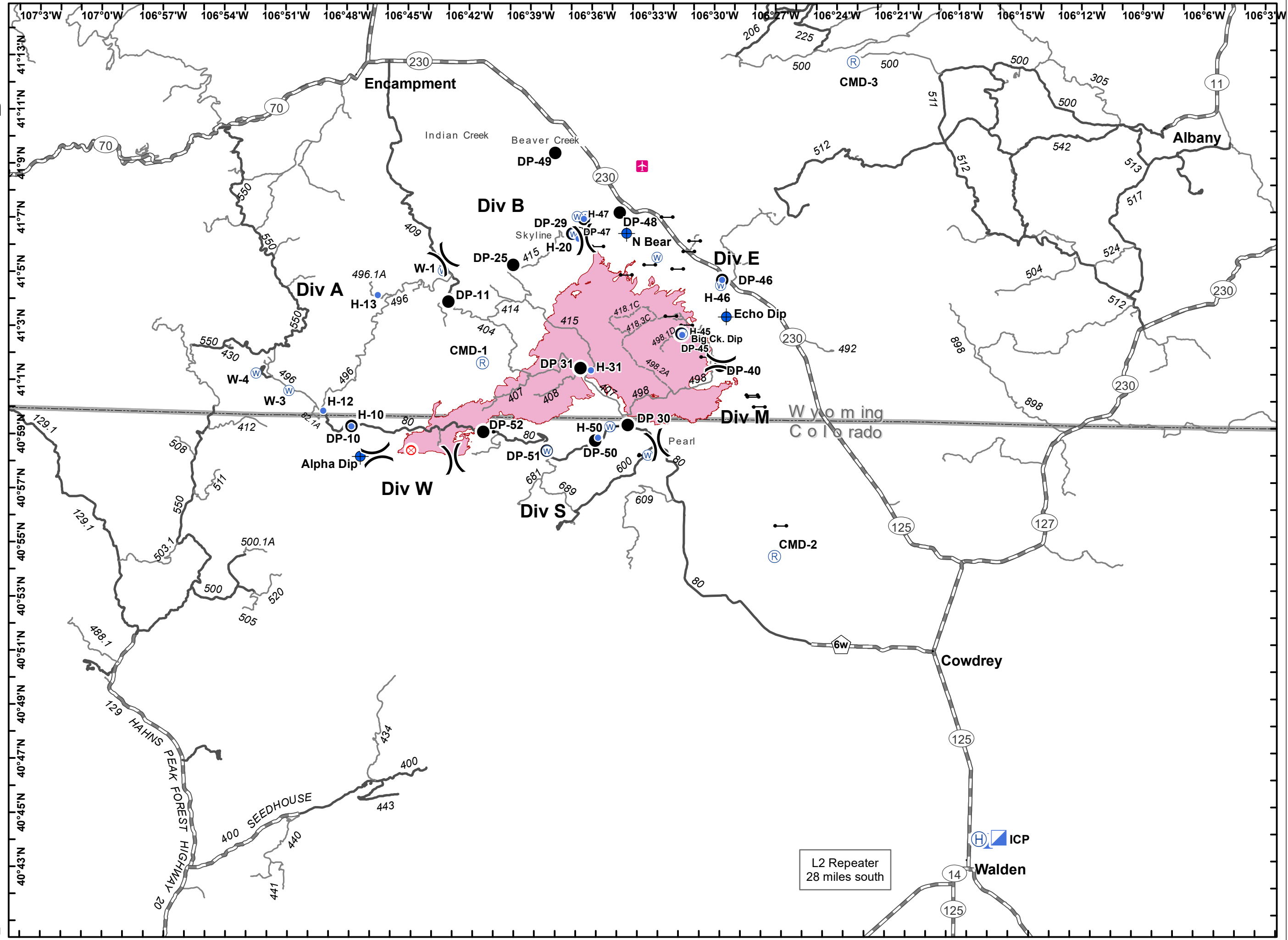
Roads

- High Clearance Route Identified For Use
- Gravel Road, Suitable for Passenger Car
- Gravel Road, Moderate Comfort Level
- Highway



EVakili
10/5/18
2034

NAD 83
UTM Zone 13N



L2 Repeater
28 miles south

ICP
Walden