



# RYAN FIRE Pilot Map

WY-MRF-000598  
Oct 7-9, 2018

28,585 acres  
as of 10/5/18 2345 hrs

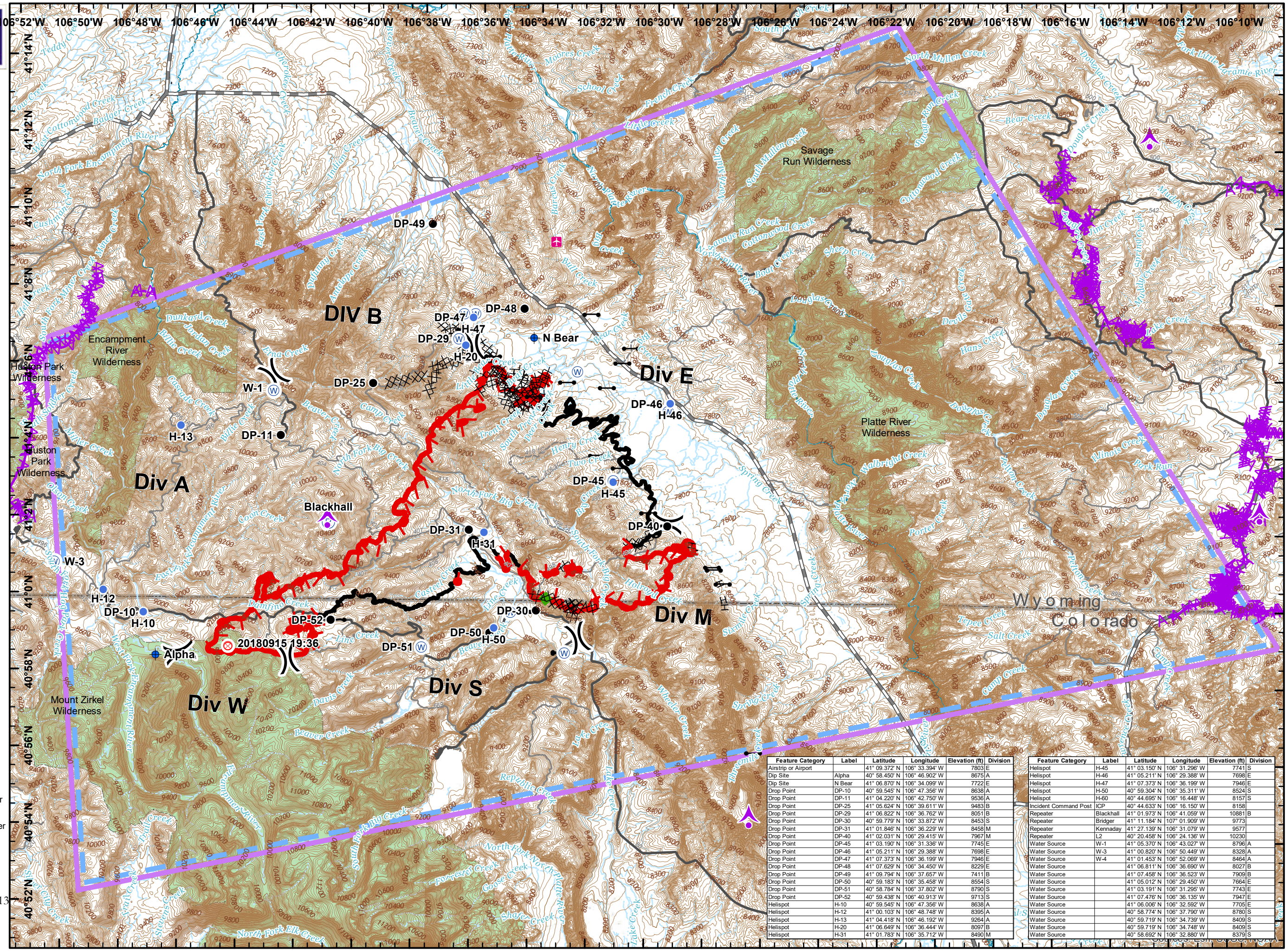
- Legend**
- Aerial Hazard
  - Aerial Hazard
  - Uncontrolled Fire Edge
  - Completed Line
  - Completed Dozer Line
  - Completed Hand Line
  - Road as Completed Line
  - Air Tanker Retardant
  - Escape Route
  - Other
  - Airstrip or Airport
  - Dip Site
  - Drop Point
  - Fire Origin
  - Gate
  - Helispot
  - Repeater
  - Water Source
  - Division Break
  - TFR 8/7064 9-23-18
  - Wilderness

**Roads**

- High Clearance Route Identified For Use
- Gravel Road, Suitable for Passenger Car
- Gravel Road, Moderate Comfort Level
- Highway

Miles 0 1 2

NAD 83  
UTM Zone 13  
EVakili  
10/6/2018  
2053



Feature Category	Label	Latitude	Longitude	Elevation (ft)	Division
Airstrip or Airport	Alpha	41° 09.372' N	106° 33.394' W	7803	E
Dip Site	N Bear	41° 06.870' N	106° 34.099' W	7722	E
Drop Point	DP-10	40° 59.545' N	106° 47.356' W	8638	A
Drop Point	DP-11	41° 04.220' N	106° 42.750' W	9536	A
Drop Point	DP-25	41° 05.624' N	106° 39.611' W	9483	B
Drop Point	DP-29	41° 06.822' N	106° 36.762' W	8051	B
Drop Point	DP-30	40° 59.779' N	106° 33.872' W	8453	S
Drop Point	DP-31	41° 01.846' N	106° 36.229' W	8458	M
Drop Point	DP-40	41° 02.031' N	106° 29.415' W	7967	M
Drop Point	DP-45	41° 03.190' N	106° 31.336' W	7745	E
Drop Point	DP-46	41° 05.211' N	106° 29.388' W	7698	E
Drop Point	DP-47	41° 07.373' N	106° 36.199' W	7946	E
Drop Point	DP-48	41° 07.629' N	106° 34.450' W	8229	E
Drop Point	DP-49	41° 09.794' N	106° 37.657' W	7411	B
Drop Point	DP-50	40° 59.183' N	106° 35.458' W	8554	S
Drop Point	DP-51	40° 58.784' N	106° 37.802' W	8790	S
Drop Point	DP-52	40° 59.438' N	106° 40.913' W	9713	S
Helispot	H-10	40° 59.545' N	106° 47.356' W	8638	A
Helispot	H-12	41° 04.103' N	106° 48.748' W	8365	A
Helispot	H-13	41° 04.418' N	106° 46.102' W	8365	A
Helispot	H-20	41° 06.649' N	106° 36.444' W	8097	B
Helispot	H-31	41° 01.783' N	106° 35.712' W	8490	M

Feature Category	Label	Latitude	Longitude	Elevation (ft)	Division
Helispot	H-45	41° 03.150' N	106° 31.296' W	7741	S
Helispot	H-46	41° 05.211' N	106° 29.388' W	7698	E
Helispot	H-47	41° 07.373' N	106° 36.199' W	7946	E
Helispot	H-50	40° 59.304' N	106° 35.311' W	8524	S
Helispot	H-60	40° 44.695' N	106° 16.448' W	8157	S
Incident Command Post	ICP	40° 44.633' N	106° 16.150' W	8158	S
Repeater	Blackhall	41° 01.973' N	106° 41.059' W	10881	B
Repeater	Bridger	41° 11.184' N	107° 01.909' W	9773	S
Repeater	Kennaday	41° 27.139' N	106° 31.079' W	9577	S
Repeater	L2	40° 20.458' N	106° 24.136' W	10230	S
Water Source	W-1	41° 05.370' N	106° 43.027' W	8796	A
Water Source	W-3	41° 00.820' N	106° 50.449' W	8328	A
Water Source	W-4	41° 01.453' N	106° 52.069' W	8464	A
Water Source		41° 06.811' N	106° 36.690' W	8027	B
Water Source		41° 07.458' N	106° 36.523' W	7909	B
Water Source		41° 05.012' N	106° 29.450' W	7664	E
Water Source		41° 03.191' N	106° 31.295' W	7743	E
Water Source		41° 07.478' N	106° 36.135' W	7947	E
Water Source		41° 06.006' N	106° 32.592' W	7705	E
Water Source		40° 58.774' N	106° 37.790' W	8780	S
Water Source		40° 59.719' N	106° 34.739' W	8490	S
Water Source		40° 59.719' N	106° 34.748' W	8490	S
Water Source		40° 58.692' N	106° 32.880' W	8379	S