



RYAN FIRE Air Operations Map

WY-MRF-000598

Oct. 7-9, 2018

28,585 acres 10/5/18 2345hrs

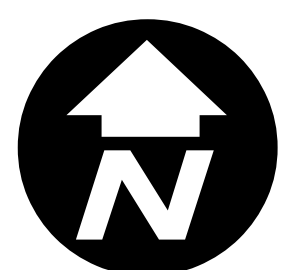
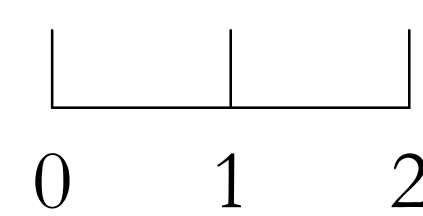
Legend

- Aerial Hazard Point
- Aerial Hazard Line
- Airstrip or Airport
- Dip Site
- Drop Point
- Fire Origin
- Gate
- Helispot
- Incident Command Post
- Repeater
- Water Source
- Division Break
- Uncontrolled Fire Edge
- Completed Line
- Completed Dozer Line
- Completed Hand Line
- Road as Completed Line
- Air Tanker Retardant
- Escape Route
- Other
- TFR 8/7064 9-23-18
- Wildfire Perimeter
- Wilderness

Roads

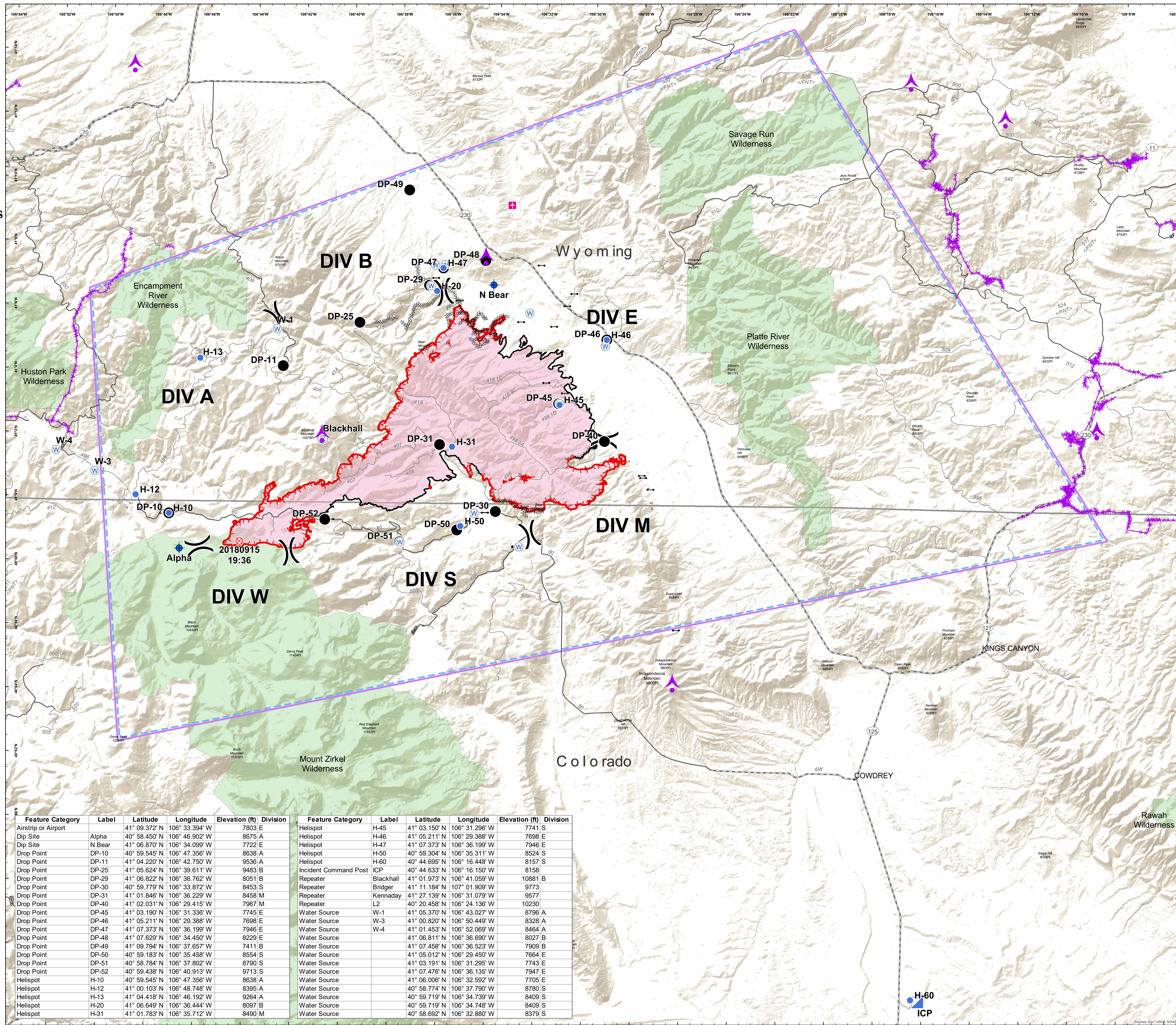
- High Clearance Route Identified For Use
- Gravel Road, Suitable for Passenger Car
- Gravel Road, Moderate Comfort Level
- Highway

Miles



NAD 83
UTM Zone 13

EVakili
10/6/2018
2047



Feature Category	Label	Latitude	Longitude	Elevation (ft)	Division
Airstrip or Airport		41° 09.372' N	106° 33.394' W	7803 E	
Dip Site	Alpha	40° 58.450' N	106° 46.902' W	8675 A	
Dip Site	N Bear	41° 06.870' N	106° 34.099' W	7722 E	
Drop Point	DP-10	40° 59.545' N	106° 47.358' W	8638 A	
Drop Point	DP-11	41° 04.220' N	106° 42.750' W	9536 A	
Drop Point	DP-25	41° 05.624' N	106° 39.611' W	9483 B	
Drop Point	DP-29	41° 06.822' N	106° 36.762' W	8051 B	
Drop Point	DP-30	40° 59.779' N	106° 33.872' W	8453 S	
Drop Point	DP-31	41° 01.846' N	106° 36.229' W	8458 M	
Drop Point	DP-40	41° 02.031' N	106° 29.415' W	7967 M	
Drop Point	DP-45	41° 03.190' N	106° 31.336' W	7745 E	
Drop Point	DP-46	41° 05.211' N	106° 29.388' W	7698 E	
Drop Point	DP-47	41° 07.373' N	106° 36.199' W	7946 E	
Drop Point	DP-48	41° 07.629' N	106° 34.450' W	8229 E	
Drop Point	DP-49	41° 09.794' N	106° 37.657' W	7411 B	
Drop Point	DP-50	40° 59.183' N	106° 35.458' W	8554 S	
Drop Point	DP-51	40° 58.784' N	106° 37.802' W	8790 S	
Drop Point	DP-52	40° 59.438' N	106° 40.913' W	9713 S	
Helispot	H-10	40° 59.545' N	106° 47.358' W	8638 A	
Helispot	H-12	41° 00.103' N	106° 48.748' W	8395 A	
Helispot	H-13	41° 04.418' N	106° 46.192' W	9264 A	
Helispot	H-20	41° 06.649' N	106° 36.444' W	8097 B	
Helispot	H-31	41° 01.783' N	106° 35.712' W	8490 M	

Feature Category	Label	Latitude	Longitude	Elevation (ft)	Division
Helispot	H-45	41° 03.150' N	106° 31.296' W	7741 S	
Helispot	H-46	41° 05.211' N	106° 29.388' W	7698 E	
Helispot	H-47	41° 07.373' N	106° 36.199' W	7946 E	
Helispot	H-50	40° 59.304' N	106° 35.311' W	8524 S	
Helispot	H-60	40° 44.695' N	106° 16.448' W	8157 S	
Incident Command Post	ICP	40° 44.633' N	106° 16.150' W	8158	
Repeater	Blackhall	41° 01.973' N	106° 41.059' W	10881 B	
Repeater	Bridger	41° 11.184' N	107° 01.909' W	9773	
Repeater	Kennaday	41° 27.139' N	106° 31.079' W	9577	
Repeater	L2	40° 20.458' N	106° 24.136' W	10230	
Water Source	W-1	41° 05.370' N	106° 43.027' W	8796 A	
Water Source	W-3	41° 00.820' N	106° 50.449' W	8328 A	
Water Source	W-4	41° 01.453' N	106° 52.069' W	8464 A	
Water Source		41° 06.811' N	106° 36.690' W	8027 B	
Water Source		41° 07.458' N	106° 36.523' W	7909 B	
Water Source		41° 05.012' N	106° 29.450' W	7664 E	
Water Source		41° 03.191' N	106° 31.295' W	7743 E	
Water Source		41° 07.476' N	106° 36.135' W	7947 E	
Water Source		41° 06.006' N	106° 32.592' W	7705 E	
Water Source		40° 58.774' N	106° 37.790' W	8780 S	
Water Source		40° 59.719' N	106° 34.739' W	8409 S	
Water Source		40° 59.719' N	106° 34.748' W	8409 S	
Water Source		40° 58.692' N	106° 32.880' W	8379 S	

