

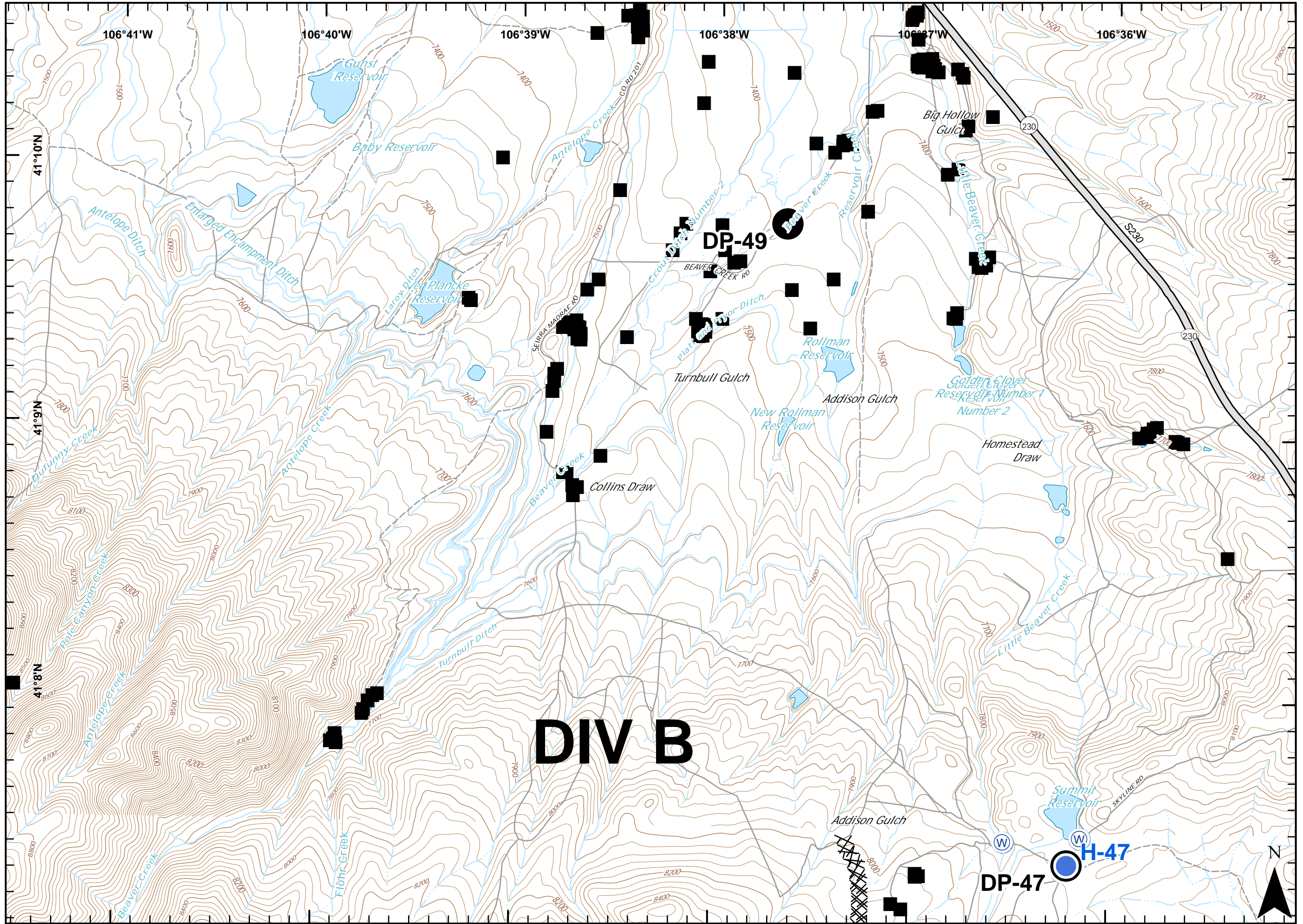


RYAN FIRE IAP Map WY-MRF-598 7-9 Oct 2018, Day

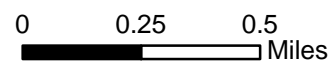
Appx 28,585 ac 5 Oct @ 23:45

Page 1 of 17

		DIV E		
DIV B		1	2	3
DIV A	4	5	6	7
8	9	10	11	12
13	14	15	16	17
DIV W		DIV S		



- Structure
- XXX Completed Dozer Line
- Road
- Drop Point
- Helispot
- Ⓜ Water Source



WGS84 GCS
Ruszkowski
10/6/2018
2054



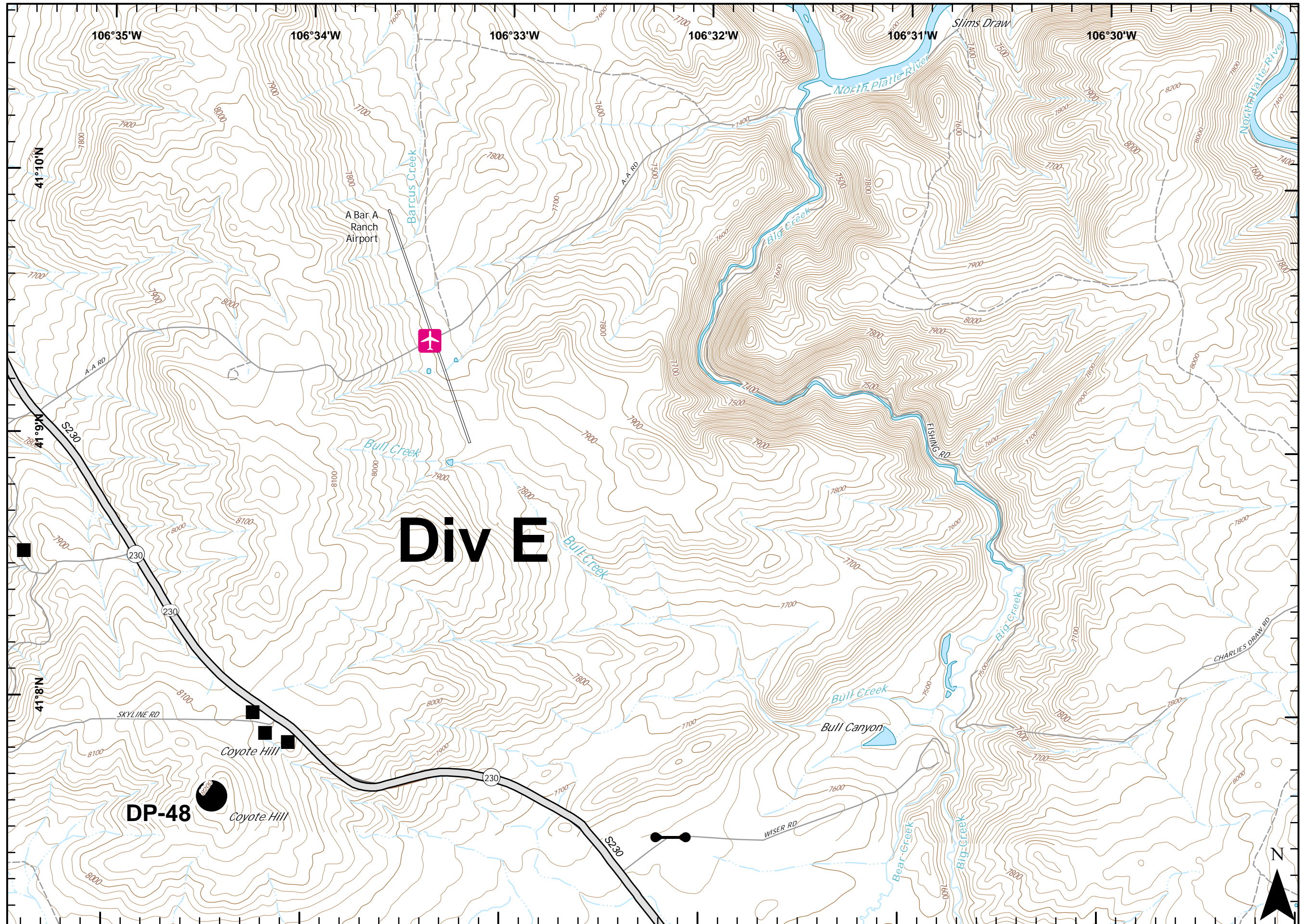


RYAN FIRE IAP Map WY-MRF-598 7-9 Oct 2018, Day

Appx 28,585 ac 5 Oct @ 23:45

Page 2 of 17

		DIV E			
DIV B ₁		2	3		
DIV A ₂		5	6	7	
8	9	10	11	12	
DIV W		13	14	15	16
		DIV S		DIV M	



- Structure
- Road
- ✈ Airstrip or Airport
- Drop Point
- Gate
- ▲ Value at Risk

0 0.25 0.5 Miles

WGS84
GCS

Ruszkowski
10/6/2018
2054



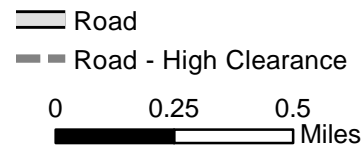
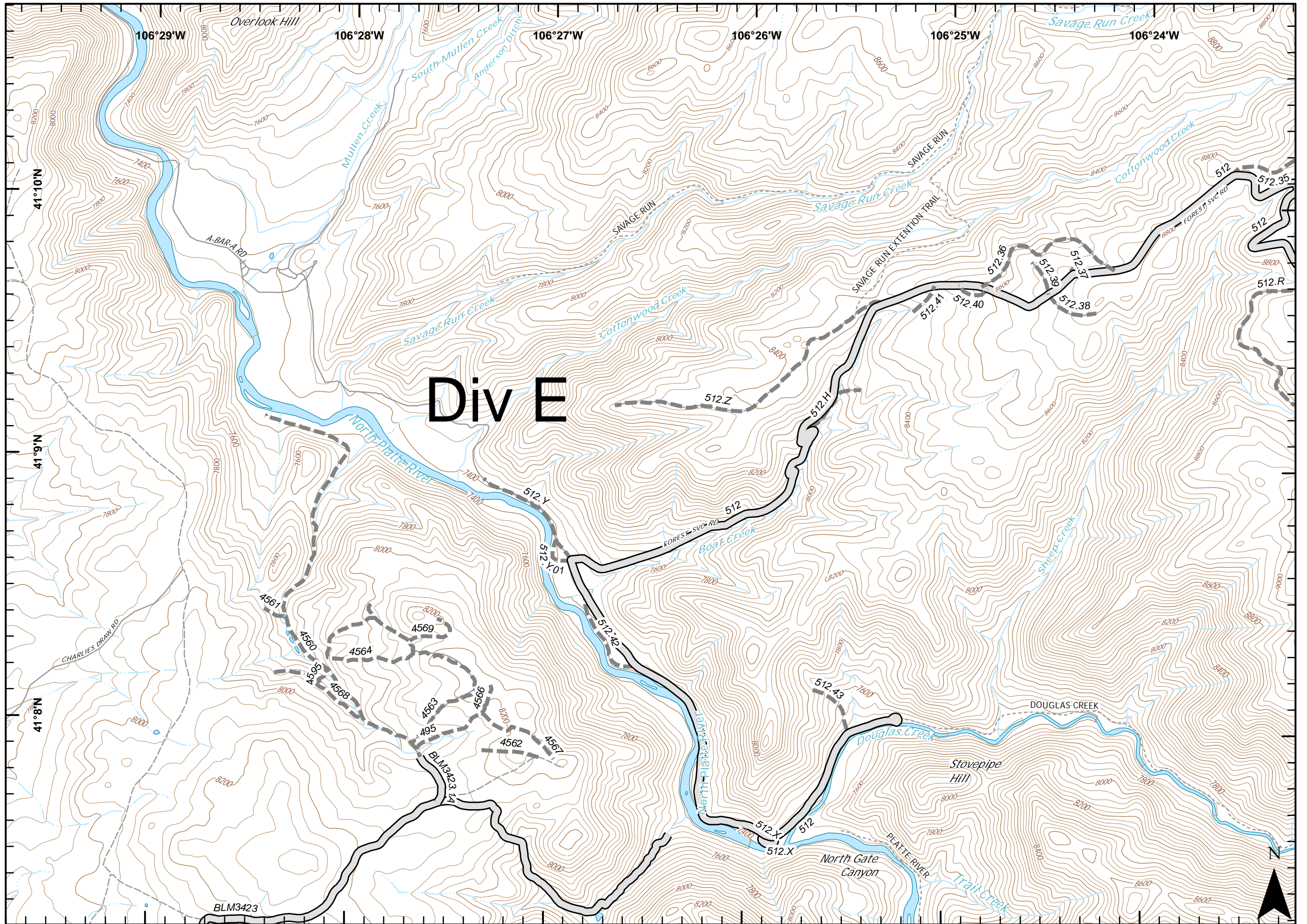


RYAN FIRE IAP Map WY-MRF-598 7-9 Oct 2018, Day

Appx 28,585 ac 5 Oct @ 23:45

Page 3 of 17

		DIV E			
DIV B		1	2	3	4
DIV A	4	5	6	7	8
8	9	10	11	12	13
13	14	15	16	17	DIV M
DIV W		DIV S			



WGS84
GCS

Ruszkowski
10/6/2018
2054



RYAN FIRE IAP Map WY-MRF-598 7-9 Oct 2018, Day

Appx 28,585 ac 5 Oct @ 23:45

Page 4 of 17

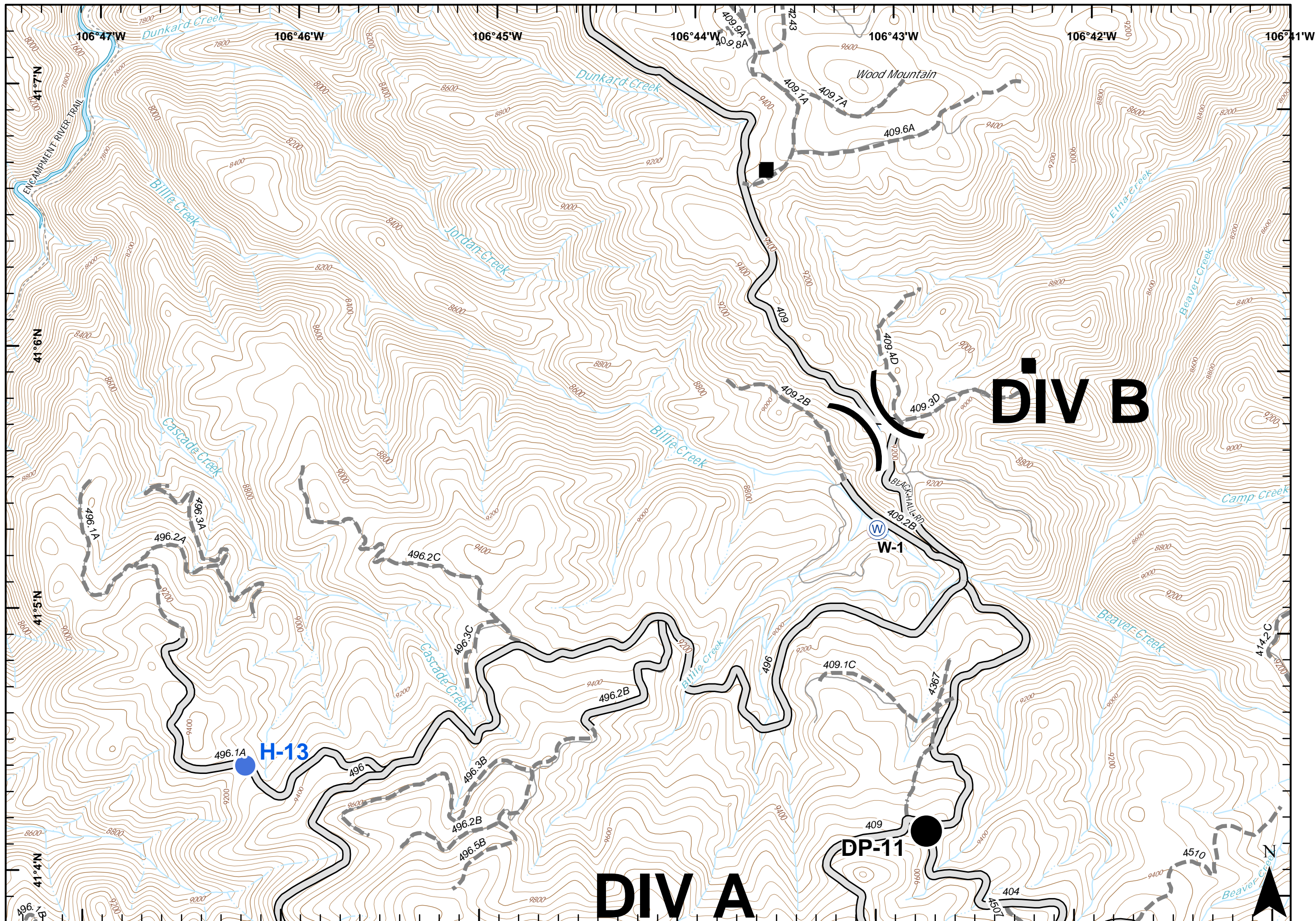
	DIV B			
	1	2	3	
DIV A	4	5	6	7
8	9	10	11	12
13	14	15	16	17
DIV W	DIV S			DIV M

- Structure
- Road
- Road - High Clearance
- Drop Point
- Helispot
- Water Source
- Division Break

0 0.25 0.5 Miles

WGS84
GCS

Ruszkowski
10/6/2018
2054





RYAN FIRE IAP Map

WY-MRF-598
7-9 Oct 2018, Day

Appx 28,585 ac 5 Oct @ 23:45

Page 5 of 17

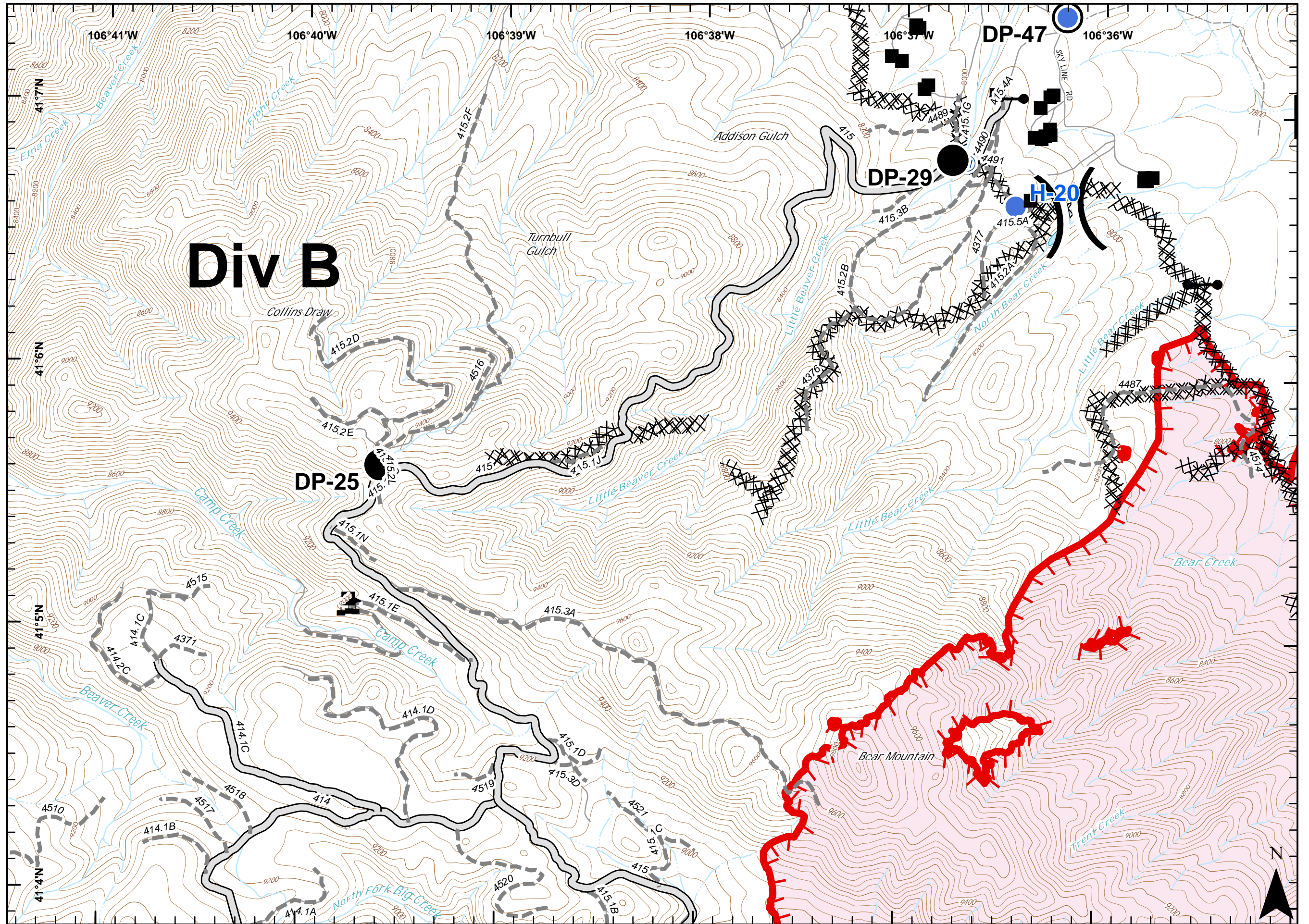
DIV B			DIV E		
	1	2	3	4	5
DIV A	6	7	8	9	10
11	12	13	14	15	16
DIV W	DIV S	DIV M			

- Structure
- Uncontrolled Fire Edge
- Completed Dozer Line
- Road
- Road - High Clearance
- Drop Point
- Gate
- Helispot
- Water Source
- Value at Risk
- Division Break

0 0.25 0.5 Miles

WGS84
GCS

Ruszkowski
10/6/2018
2055





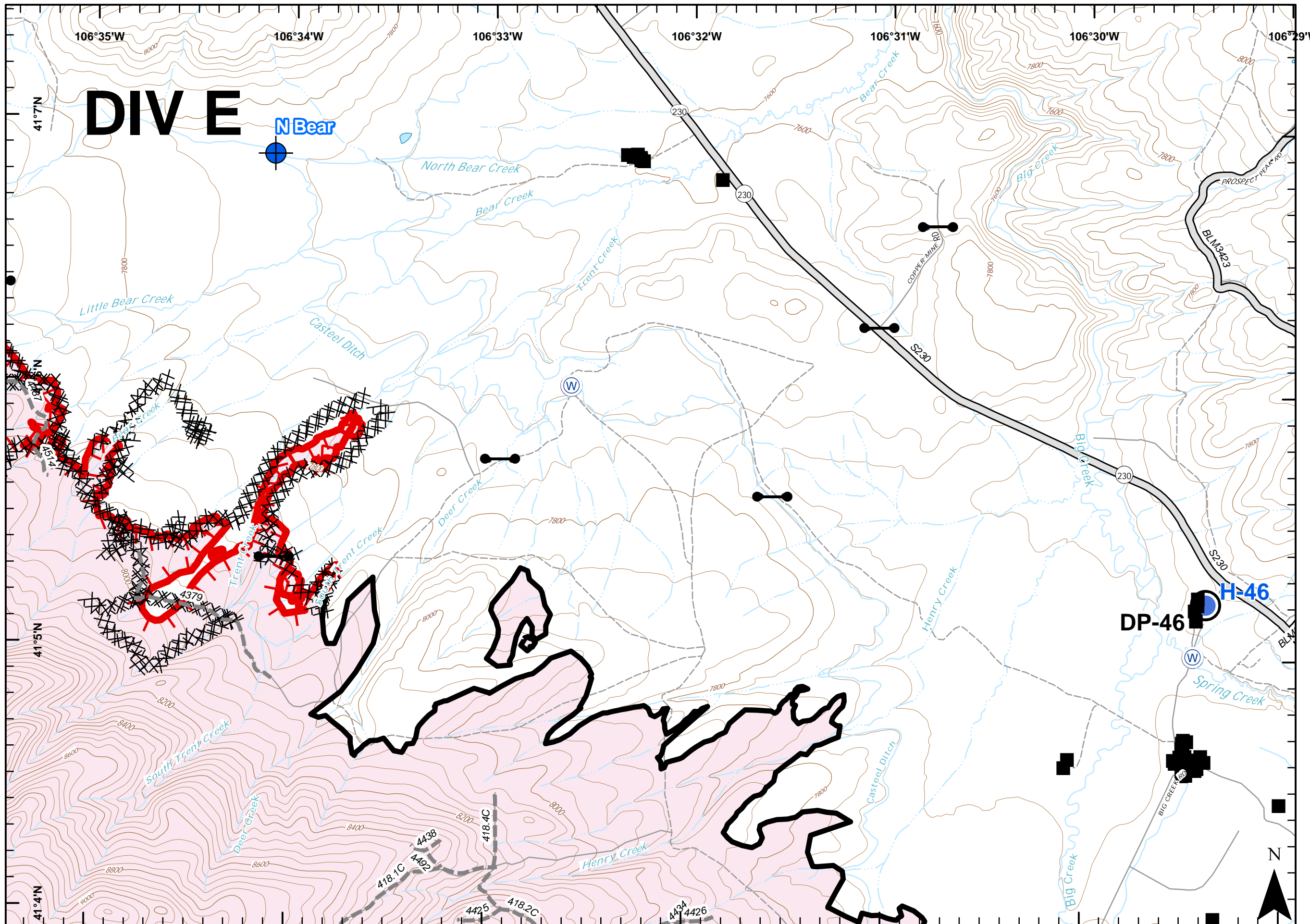
RYAN FIRE IAP Map

WY-MRF-598
7-9 Oct 2018, Day

Appx 28,585 ac 5 Oct @ 23:45

Page 6 of 17

		DIV E				
		DIV B1	2	3		
DIV A2	5	6	7			
8	9	10	11	12		
13	14	15	16	17	DIV M	
DIV W		DIV S				



- Structure
- ▬ Uncontrolled Fire Edge
- ▬ Completed Line
- XXXX Completed Dozer Line
- ▬ Road
- ▬▬ Road - High Clearance
- ⊕ Dip Site
- Drop Point
- ⊙ Gate
- Helispot
- Ⓜ Water Source

0 0.25 0.5 Miles

WGS84
GCS

Ruszkowski
10/6/2018
2055

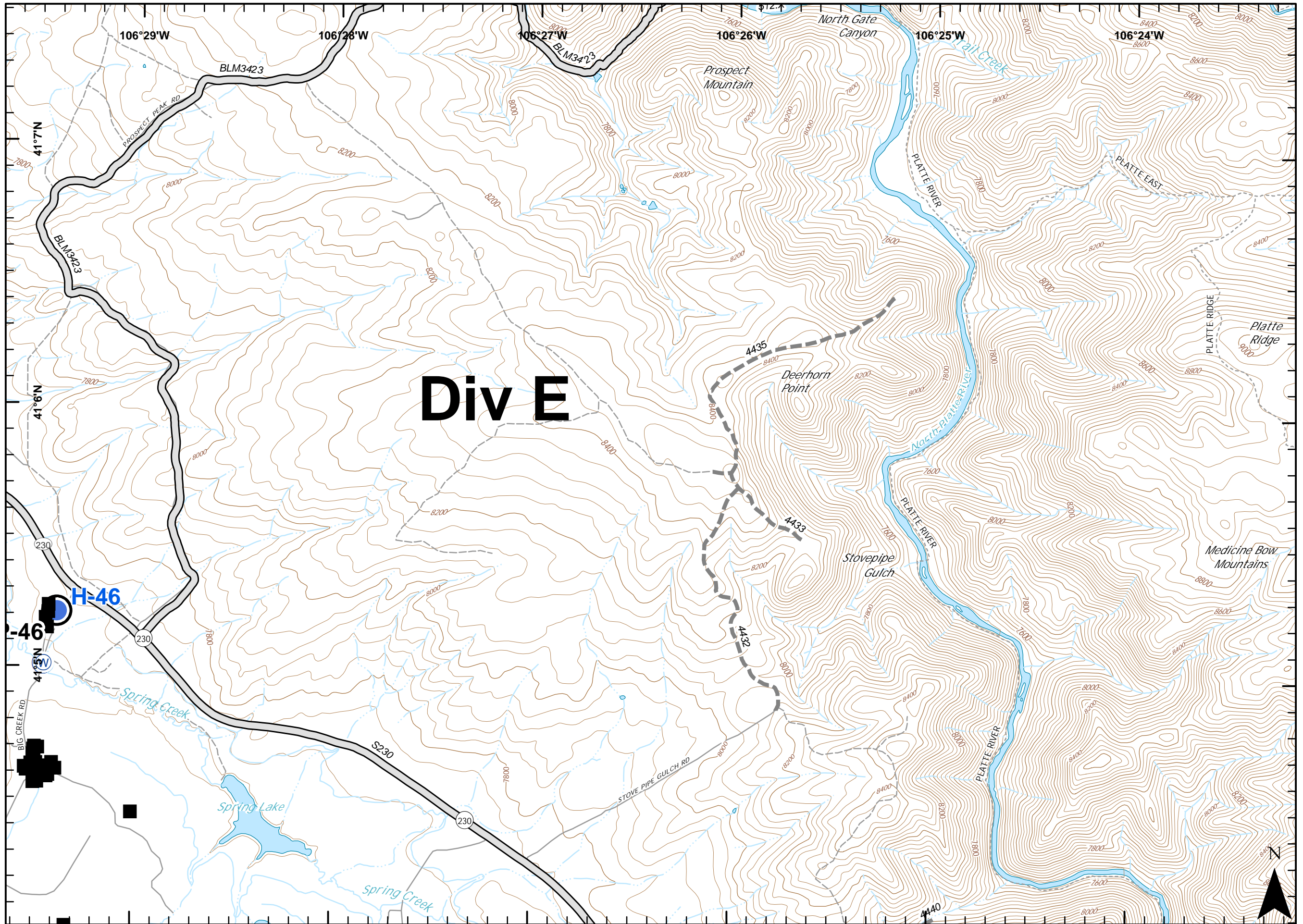


RYAN FIRE IAP Map WY-MRF-598 7-9 Oct 2018, Day

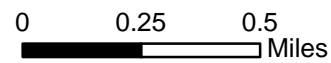
Appx 28,585 ac 5 Oct @ 23:45

Page 7 of 17

			DIV E		
DIV B		1	2	3	
DIV A	4	5	6	7	
8	9	10	11	12	
13	14	15	16	17	DIV M
DIV W		DIV S			

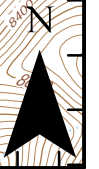


- Structure
- Road
- Road - High Clearance
- Drop Point
- Helispot
- Water Source



WGS84
GCS

Ruszkowski
10/6/2018
2055





RYAN FIRE

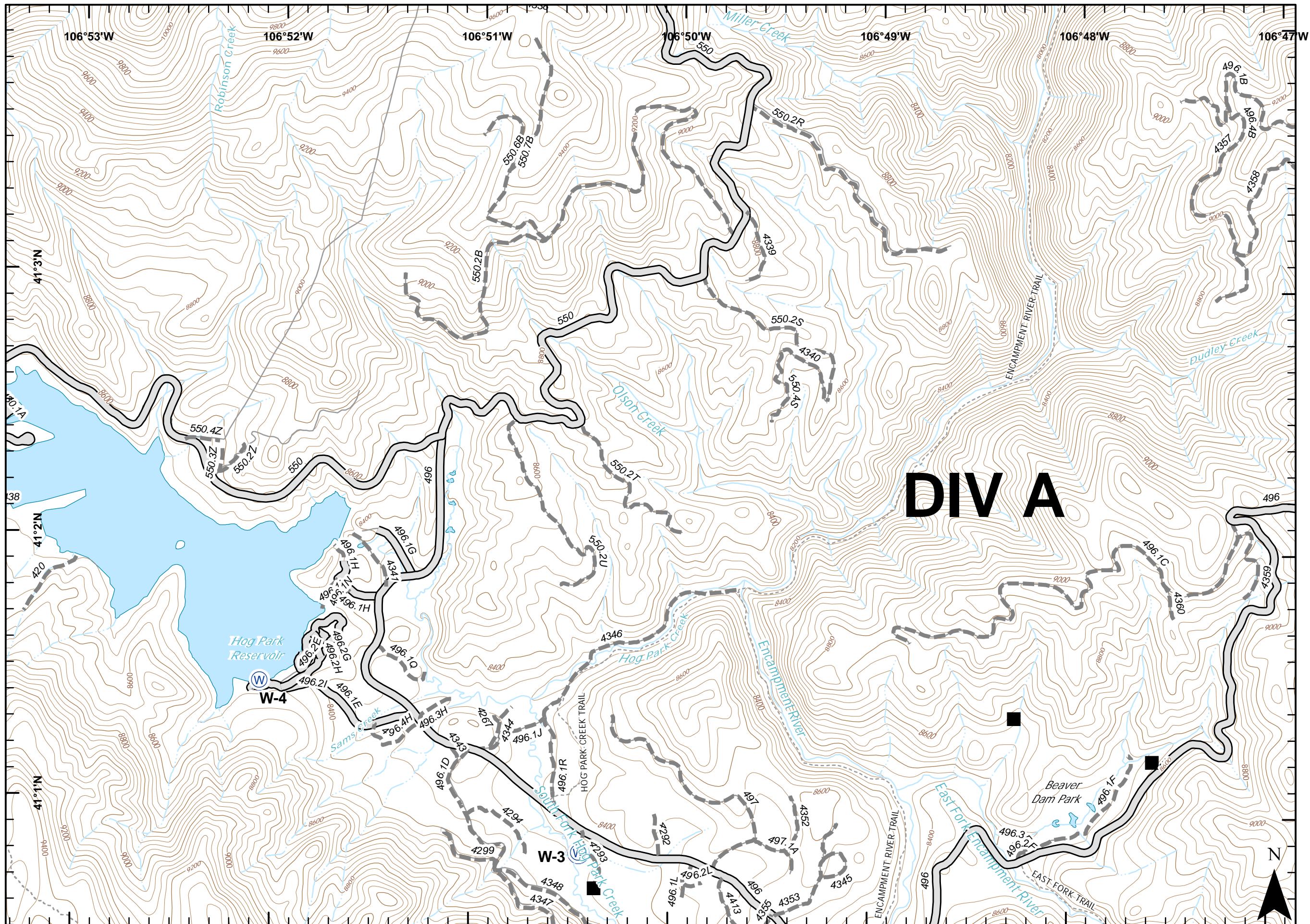
IAP Map

WY-MRF-598
7-9 Oct 2018, Day

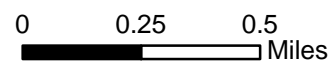
Appx 28,585 ac 5 Oct @ 23:45

Page 8 of 17

		DIV E		
DIV B		1	2	3
DIV A	4	5	6	7
	8	9	10	11
DIV W	12	13	14	15
	16	17	DIV M	
		DIV S		



- Structure
- Road
- Road - High Clearance
- Water Source



WGS84
GCS

Ruszkowski
10/6/2018
2055



RYAN FIRE IAP Map WY-MRF-598 7-9 Oct 2018, Day

Appx 28,585 ac 5 Oct @ 23:45

Page 10 of 17

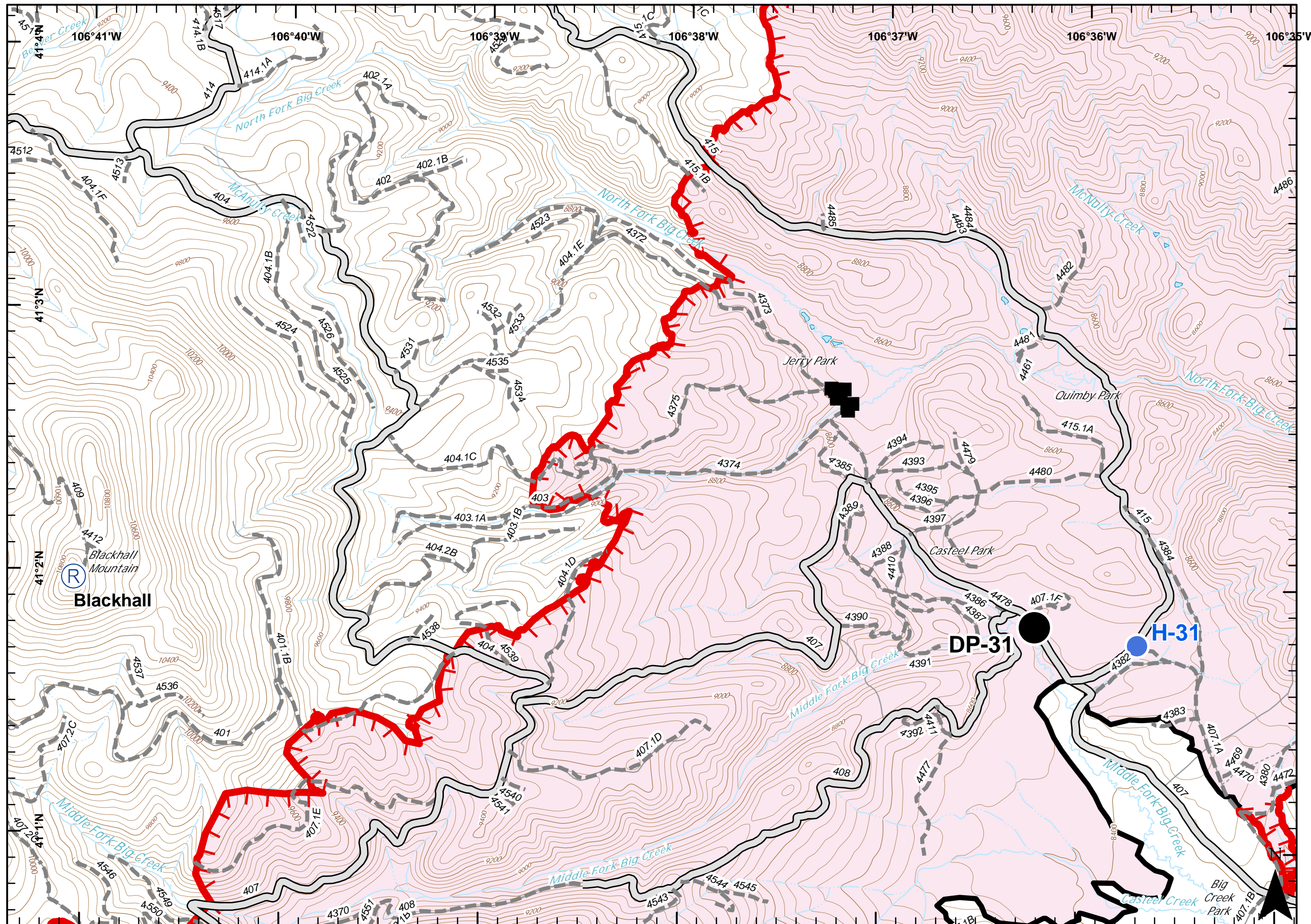
		DIV E		
DIV B		1	2	3
DIV A		4	5	6
8	9	10	11	12
13	14	15	16	17
DIV W		DIV S		
		DIV M		

- Structure
- Uncontrolled Fire Edge
- Completed Line
- Road
- Road - High Clearance
- Drop Point
- Helispot
- Repeater
- Value at Risk

0 0.25 0.5 Miles

WGS84
GCS

Ruszkowski
10/6/2018
2055





RYAN FIRE
IAP Map
 WY-MRF-598
 7-9 Oct 2018, Day

Appx 28,585 ac 5 Oct @ 23:45

Page 11 of 17

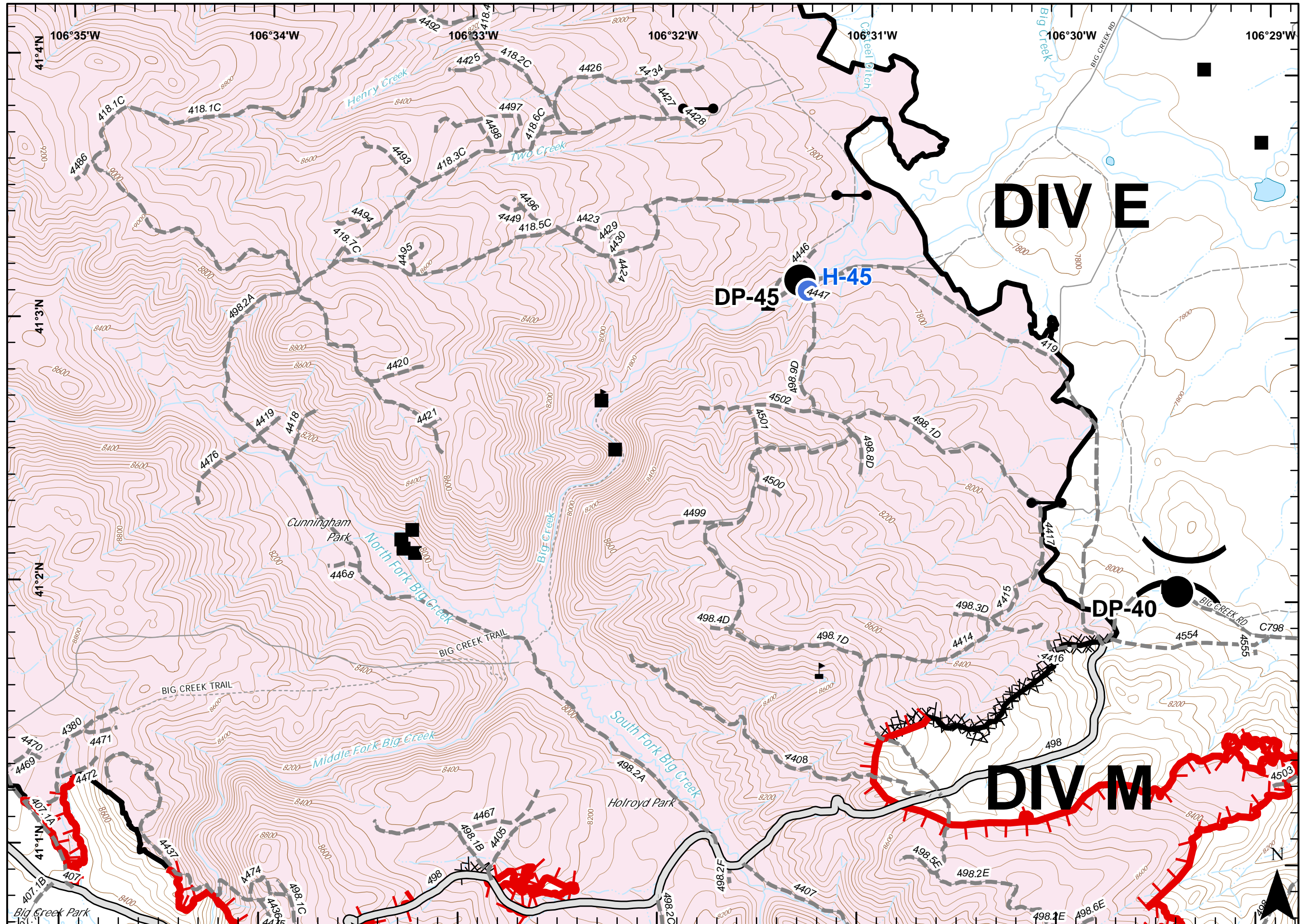
		DIV E		
	DIV B ₁	2	3	
DIV A ₁	5	6	7	
8	9	10	11	12
13	14	15	16	17
DIV W	DIV S		DIV M	

- Structure
- Uncontrolled Fire Edge
- Completed Line
- Completed Dozer Line
- Road
- Road - High Clearance
- Drop Point
- Gate
- Helispot
- Water Source
- Value at Risk
- Division Break

0 0.25 0.5 Miles

WGS84
GCS

Ruszkowski
10/6/2018
2055





RYAN FIRE IAP Map

WY-MRF-598
7-9 Oct 2018, Day

Appx 28,585 ac 5 Oct @ 23:45

Page 12 of 17

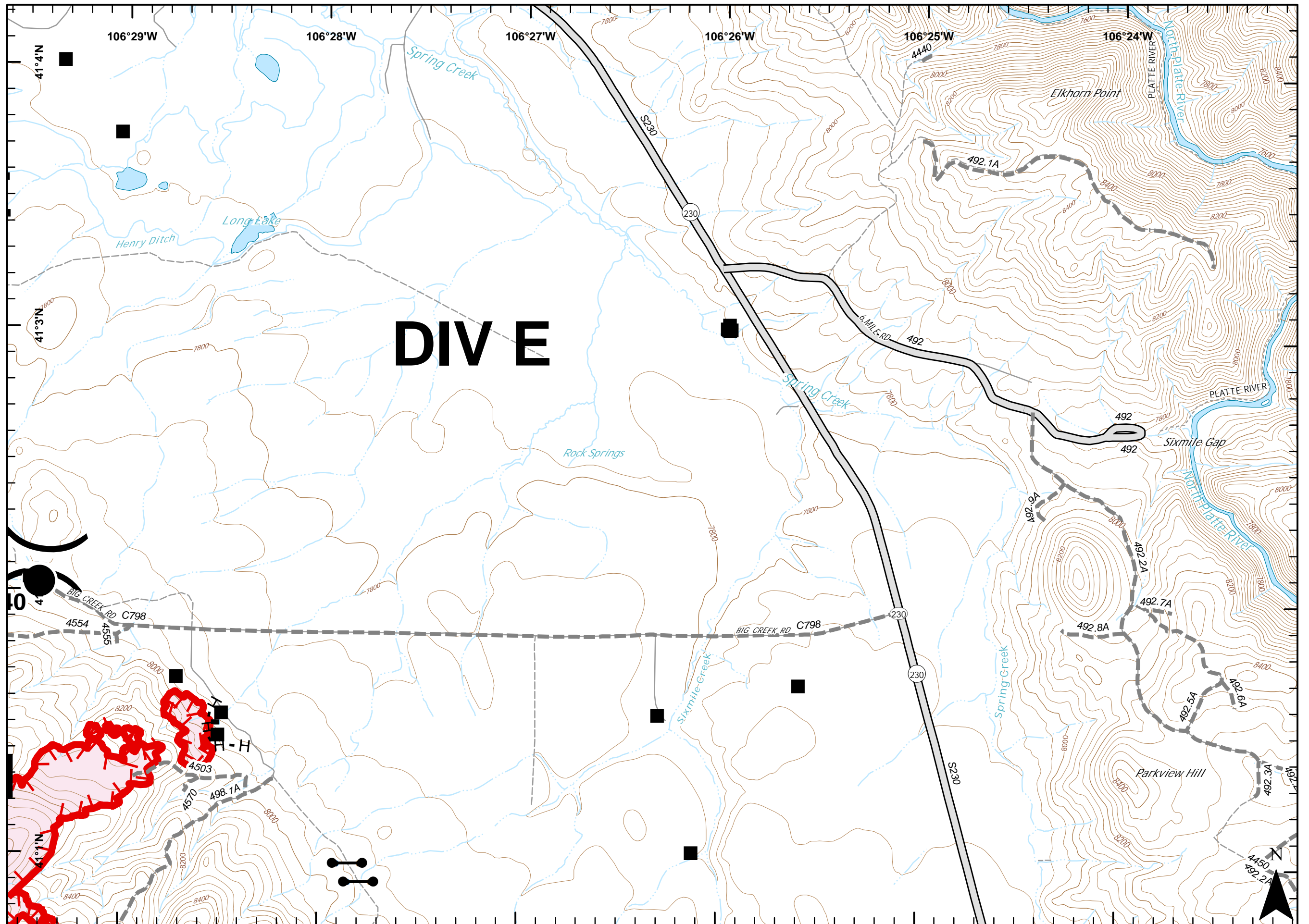
			DIV E		
DIV B		1	2	3	
DIV A	4	5	6	7	
8	9	10	11	12	
13	14	15	16	17	DIV M
DIV W		DIV S			

- Structure
- Uncontrolled Fire Edge
- Completed Hand Line
- Road
- Road - High Clearance
- Drop Point
- Gate
- Value at Risk
- Division Break

0 0.25 0.5 Miles

WGS84
GCS

Ruszkowski
10/6/2018
2055





RYAN FIRE

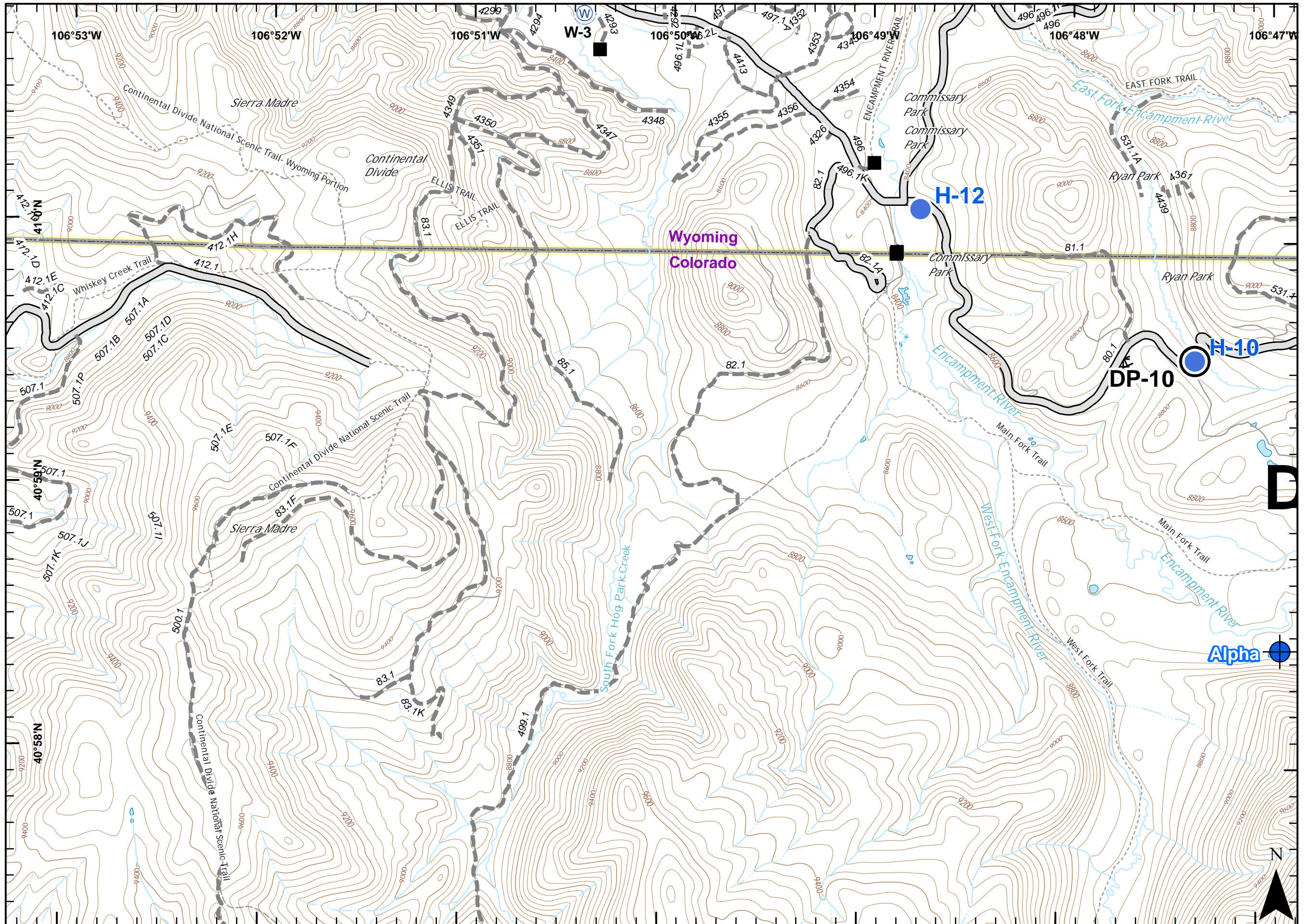
IAP Map

WY-MRF-598
7-9 Oct 2018, Day

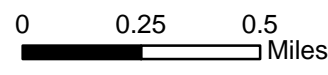
Appx 28,585 ac 5 Oct @ 23:45

Page 13 of 17

		DIV E		
		DIV B ₁	2	3
DIV A ₇	4	5	6	7
8	9	10	11	12
13	14	15	16	17
DIV W	DIV S			DIV M



- Structure
- H - Completed Hand Line
- Road
- - - Road - High Clearance
- ⊕ Dip Site
- Drop Point
- Helispot
- Ⓜ Water Source
- ▲ Value at Risk



WGS84
GCS

Ruszkowski
10/6/2018
2055



RYAN FIRE

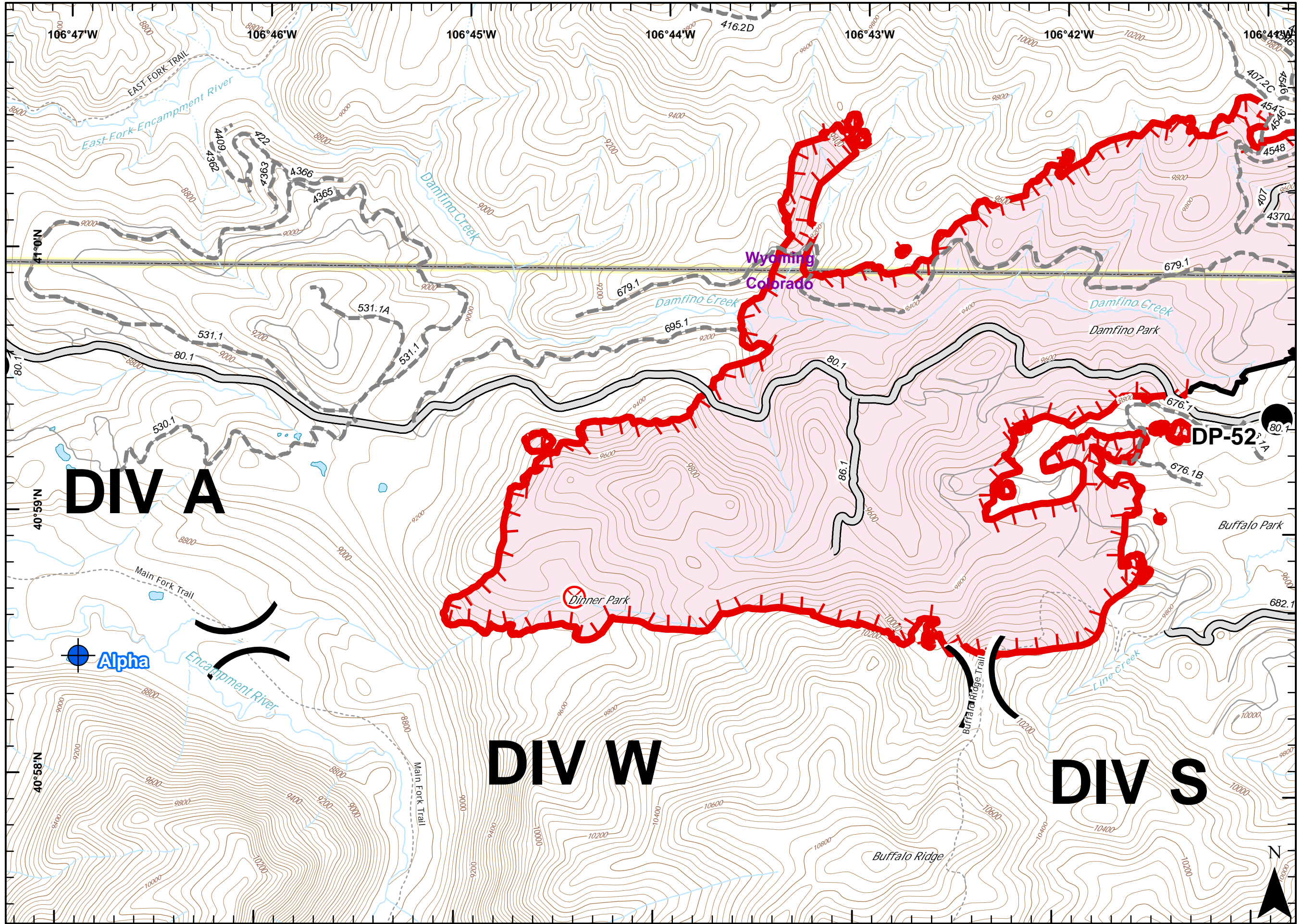
IAP Map

WY-MRF-598
7-9 Oct 2018, Day

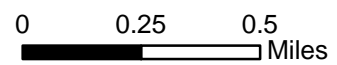
Appx 28,585 ac 5 Oct @ 23:45

Page 14 of 17

		DIV E				
		DIV B ₁	2	3		
DIV A ₇	4	5	6	7		
8	9	10	11	12		
13	14	15	16	17	DIV M	
DIV W		DIV S				



- Uncontrolled Fire Edge
- Completed Line
- Road
- Road - High Clearance
- Dip Site
- Drop Point
- Fire Origin
- Helispot
- Division Break



WGS84 GCS
Ruszkowski 10/6/2018 2056



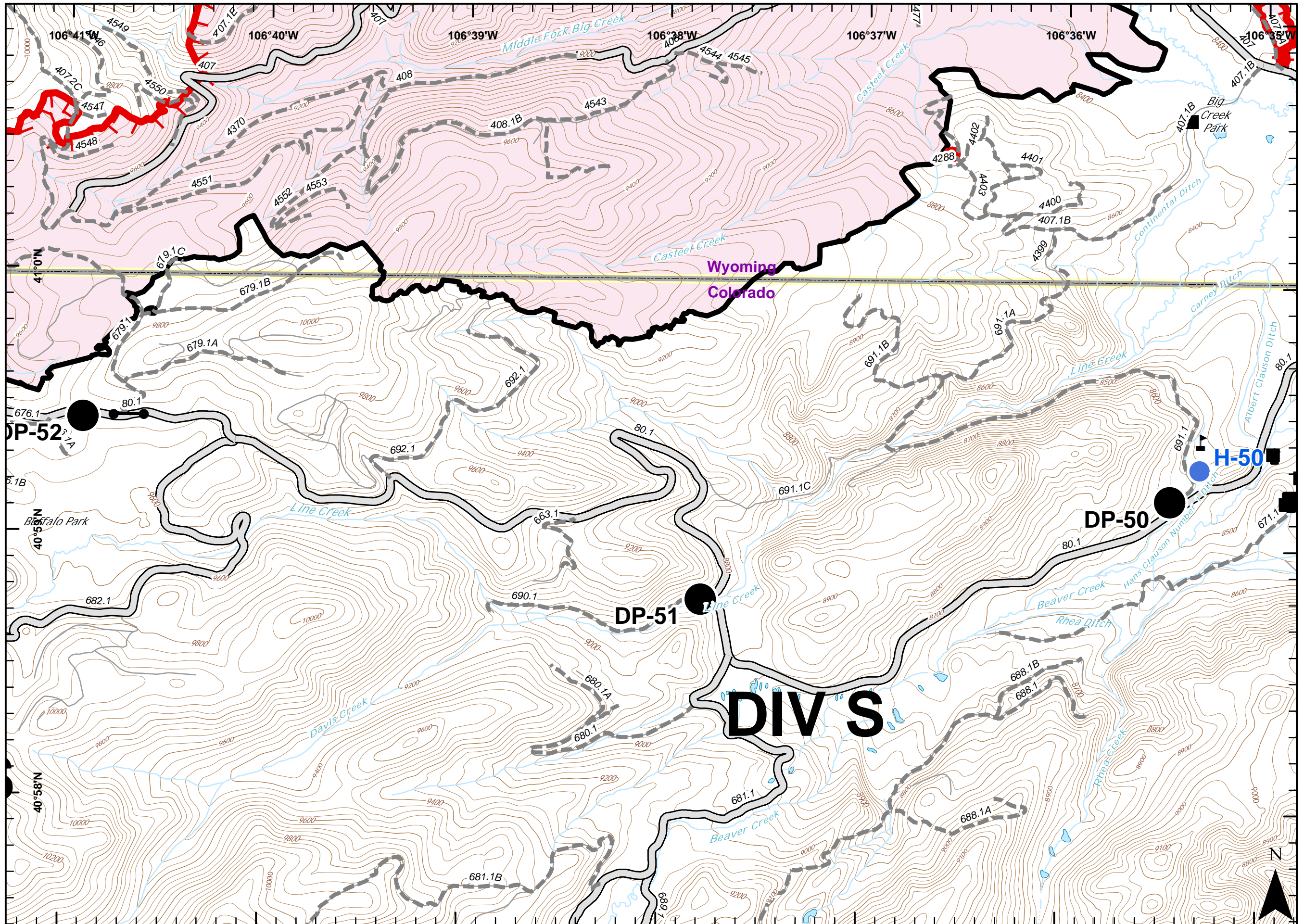


RYAN FIRE IAP Map WY-MRF-598 7-9 Oct 2018, Day

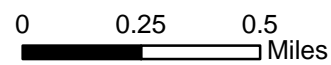
Appx 28,585 ac 5 Oct @ 23:45

Page 15 of 17

			DIV E		
DIV B		1	2	3	
	4	5	6	7	
DIV A	8	9	10	11	12
	13	14	15	16	17
DIV W	DIV S			DIV M	



- Structure
- Uncontrolled Fire Edge
- Completed Line
- Road
- Road - High Clearance
- Drop Point
- Gate
- Helispot
- Water Source
- Value at Risk



WGS84
GCS

Ruszkowski
10/6/2018
2056





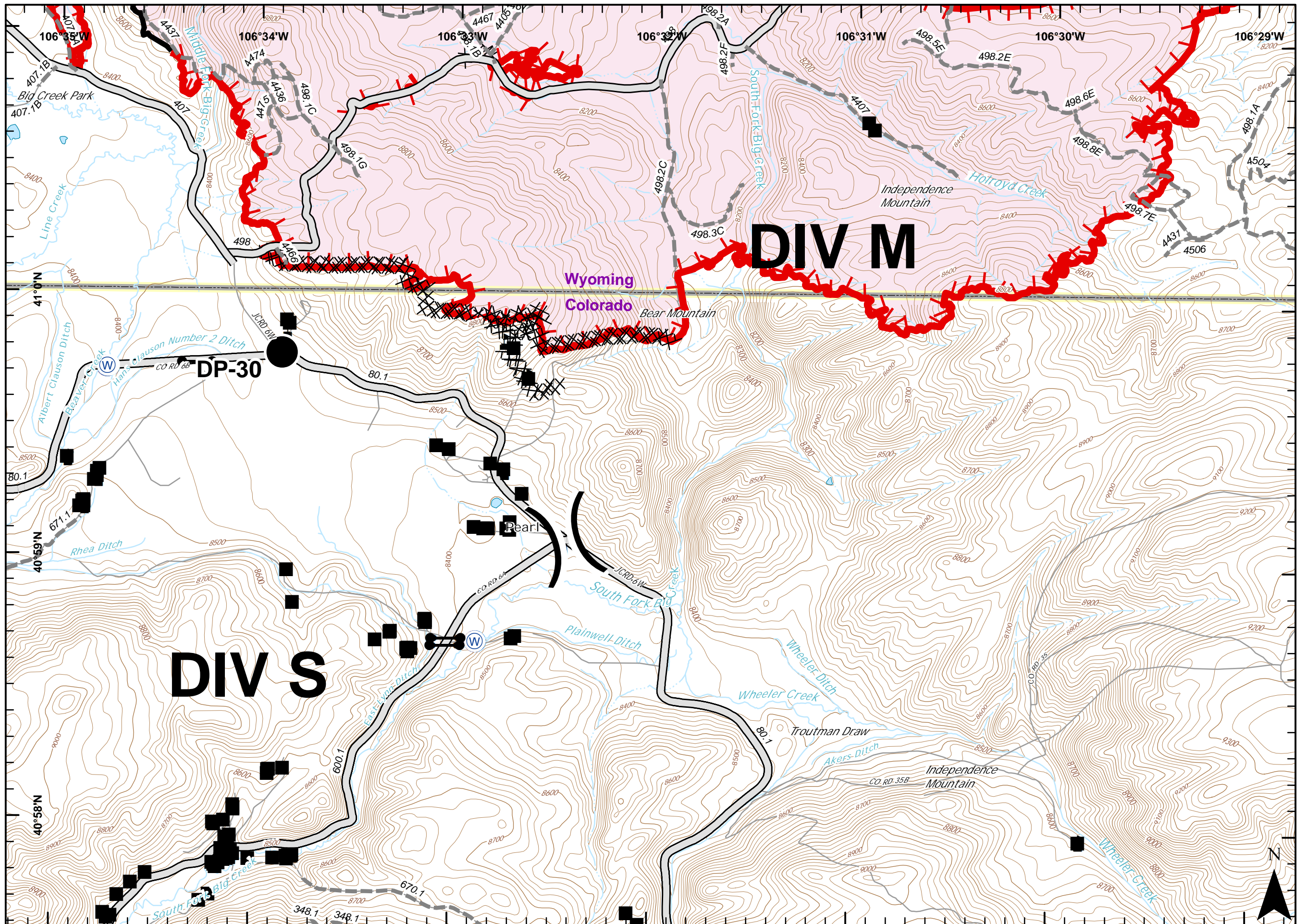
RYAN FIRE IAP Map

WY-MRF-598
7-9 Oct 2018, Day

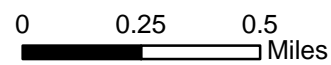
Appx 28,585 ac 5 Oct @ 23:45

Page 16 of 17

		DIV E		
DIV B		1	2	3
DIV A	4	5	6	7
8	9	10	11	12
13	14	15	16	17
DIV W		DIV S		DIV M



- Structure
- ▬ Uncontrolled Fire Edge
- ▬ Completed Line
- ▬ Completed Dozer Line
- ▬ Road
- ▬ Road - High Clearance
- Drop Point
- ⊙ Gate
- ⊙ Water Source
- ⊙ Value at Risk
- ⊙ Division Break



WGS84
GCS

Ruszkowski
10/6/2018
2056



RYAN FIRE

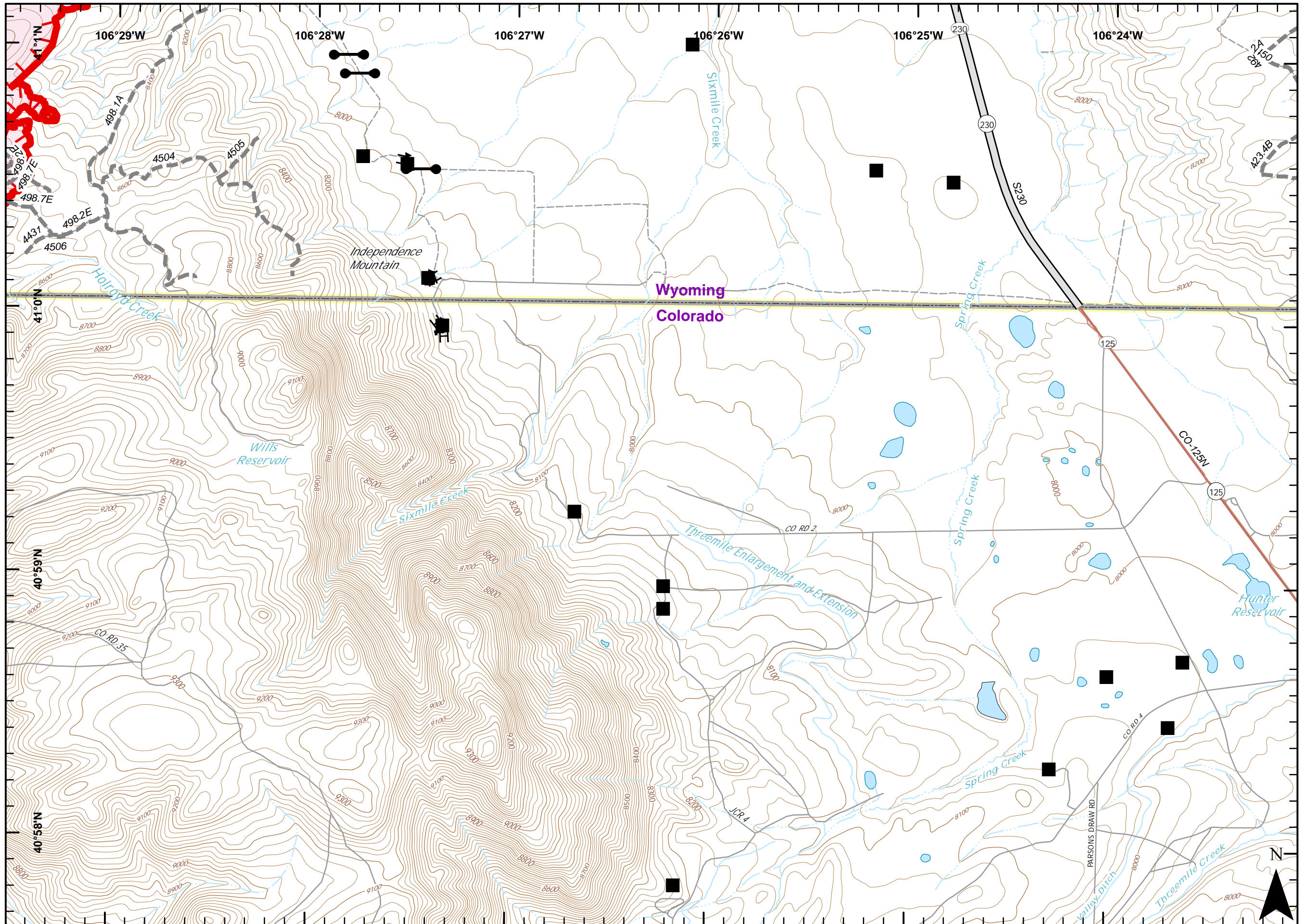
IAP Map

WY-MRF-598
7-9 Oct 2018, Day

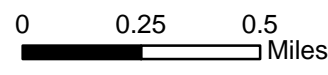
Appx 28,585 ac 5 Oct @ 23:45

Page 17 of 17

		DIV E		
	DIV B ₁	2	3	
DIV A ₁	5	6	7	
8	9	10	11	12
13	14	15	16	17
DIV W		DIV S		



- Structure
- ▬ Uncontrolled Fire Edge
- H - Completed Hand Line
- ▬ Road
- ▬ Road - High Clearance
- Gate
- ▲ Value at Risk



WGS84
GCS

Ruszkowski
10/6/2018
2056





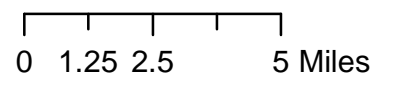
RYAN FIRE Transportation

WY-MRF-598
Oct. 7-9, 2018

28,585 acres
as of 10/5 2345 hrs

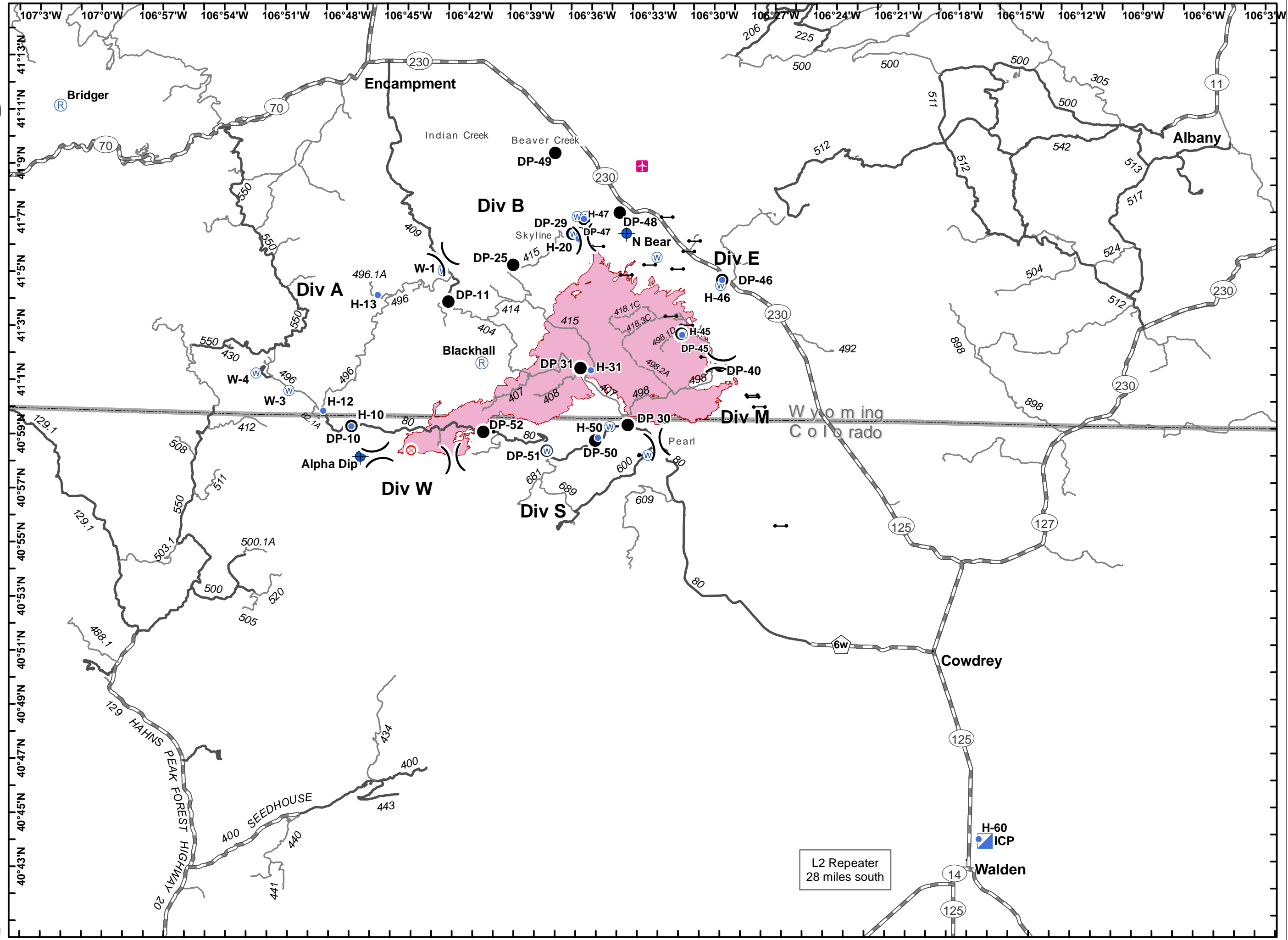
- Legend**
- Airstrip or Airport
 - Dip Site
 - Drop Point
 - Fire Origin
 - Gate
 - Helispot
 - Incident Command Post
 - Repeater
 - Water Source
 - Division Break
 - Wildfire Perimeter

- Roads**
- High Clearance Route Identified For Use
 - Gravel Road, Suitable for Passenger Car
 - Gravel Road, Moderate Comfort Level
 - Highway



EVakili
10/6/18
2120

NAD 83
UTM Zone 13N



Transportation Map - 10/6/2018 - 2120 hrs