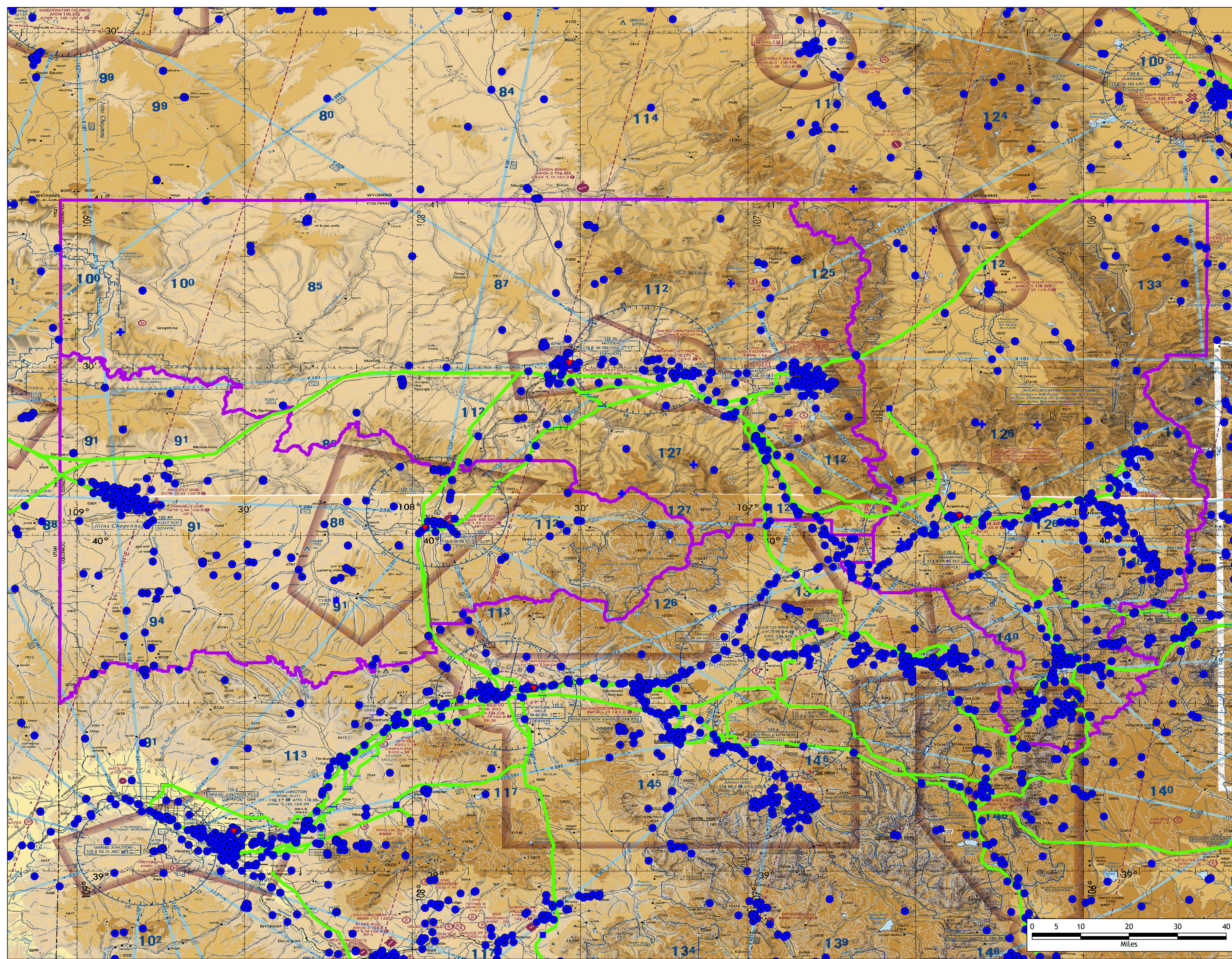


Northwest Colorado Fire Management Unit Aerial Hazard Map

Please return to Craig Dispatch



Legend

Not all hazards may be present on this map

- ▼ BLM Office Locations
- Aerial Cable
- ⊠ Bridge
- Structure
- Pylon/Tower/Smokestack
- + Communication Sites (repeaters)
- Linear Hazards
- BLM Field Office Boundary

LEGEND

Airports having **Control Towers** are shown in **Blue**, all others in **Black**. Consult Airport/Facility Directory (AFD) for details involving airport lighting, navigation aids, and services. For additional symbol information refer to the Chart User's Guide.

AIRPORTS	AIRPORT DATA
Control Tower (CT) - Primary frequency	Frequency (MHz) - Location identifier
Uncontrolled airport (UA) - See AFD for details	Elevation (ft) - Location identifier
Abandoned airport (AA) - See AFD for details	Communication site (CS) - See AFD for details
Communication site (CS) - See AFD for details	Communication site (CS) - See AFD for details

ADDITIONAL AIRPORT INFORMATION

Class A Airspace - 2400 MSL
Class B Airspace - 2400 MSL
Class C Airspace - 2400 MSL
Class D Airspace - 2400 MSL
Class E Airspace - 2400 MSL

COMMUNICATION BOXES

122.1R, 122.8, 133.8
122.1R, 122.8, 133.8
122.1R, 122.8, 133.8

RADIO AIDS TO NAVIGATION

VOR/DME
VORTAC
Non-Directional Radiobeacon (NDB)
NDB - DME

OBSTRUCTIONS

1000 ft and higher AGL
Obstruction with high-intensity lights
Obstruction with low-intensity lights
Obstruction with medium-intensity lights
Obstruction with flashing lights
Obstruction with rotating lights
Obstruction with steady lights
Obstruction with flashing lights and rotating lights
Obstruction with flashing lights and steady lights
Obstruction with flashing lights, rotating lights, and steady lights

TOPOGRAPHIC INFORMATION

Contour Interval 500 feet
Intermediate contour 250 feet
Highest Terrain elevation is 14433 feet
located at 39° 07' N - 106° 27' W
Spot elevation - 2500
Approximate elevation - 2000
Doubtful locations are indicated by omission of the point locator (dot or "x")

