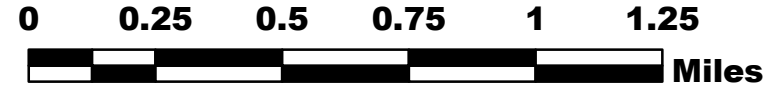


SILVER CREEK WY-MRF-000312



Operations Map 8/3/18

MMA Perimeter as of 8/2/18 1156 - 1,319 acres

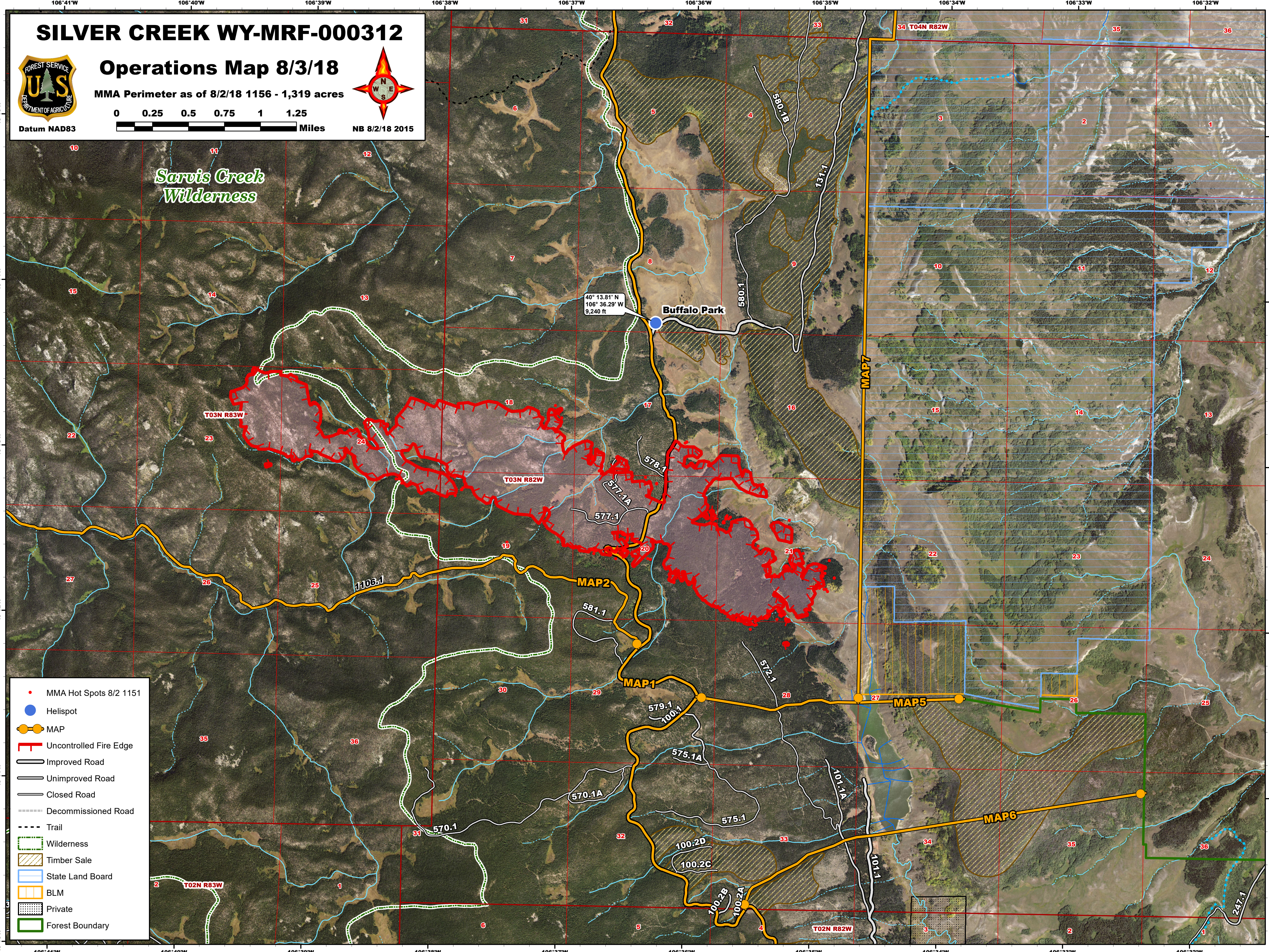


NB 8/2/18 2015

Datum NAD83

*Sarvis Creek
Wilderness*

40° 13.81' N
106° 36.29' W
9,240 ft
Buffalo Park



- MMA Hot Spots 8/2 1151
- Helispot
- MAP
- ┌ Uncontrolled Fire Edge
- Improved Road
- Unimproved Road
- Closed Road
- Decommissioned Road
- - - - Trail
- ▭ Wilderness
- ▨ Timber Sale
- ▭ State Land Board
- ▭ BLM
- ▭ Private
- ▭ Forest Boundary