

106°38'W 106°37'W 106°36'W 106°35'W 106°34'W

SILVER CREEK WY-MRF-000312

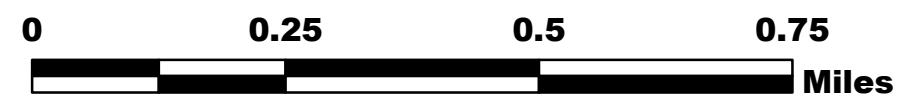


Division Z Map 8/14/18

Perimeter as of 8/13/18 2053 - 3,198 acres

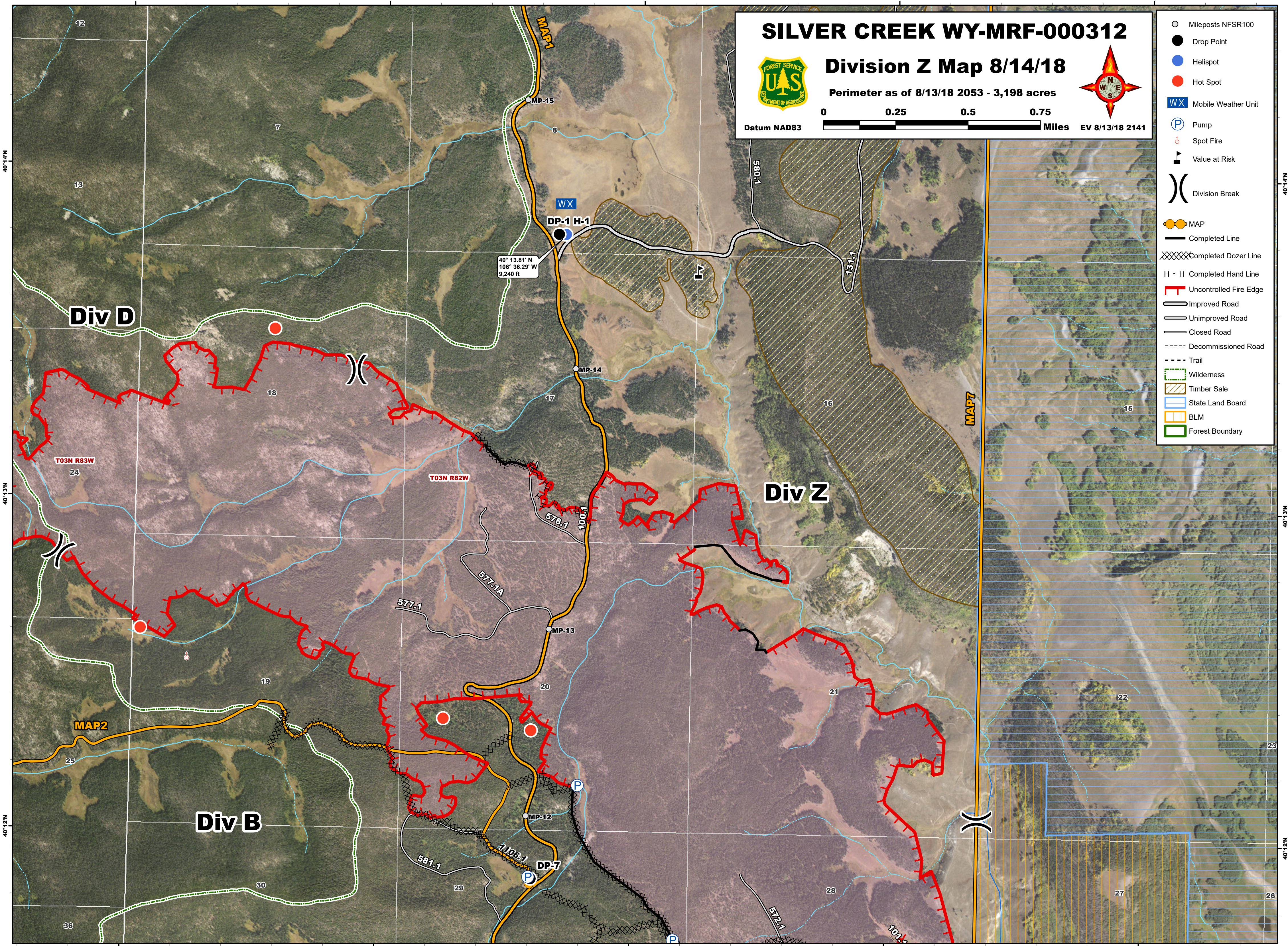


Datum NAD83



EV 8/13/18 2141

- Mileposts NFSR100
- Drop Point
- Helispot
- Hot Spot
- Mobile Weather Unit
- Pump
- Spot Fire
- Value at Risk
- Division Break
- MAP
- Completed Line
- Completed Dozer Line
- H - H Completed Hand Line
- Uncontrolled Fire Edge
- Improved Road
- Unimproved Road
- Closed Road
- Decommissioned Road
- Trail
- Wilderness
- Timber Sale
- State Land Board
- BLM
- Forest Boundary



40°14'N
40°13'N
40°12'N

40°14'N
40°13'N
40°12'N

106°38'W 106°37'W 106°36'W 106°35'W 106°34'W